

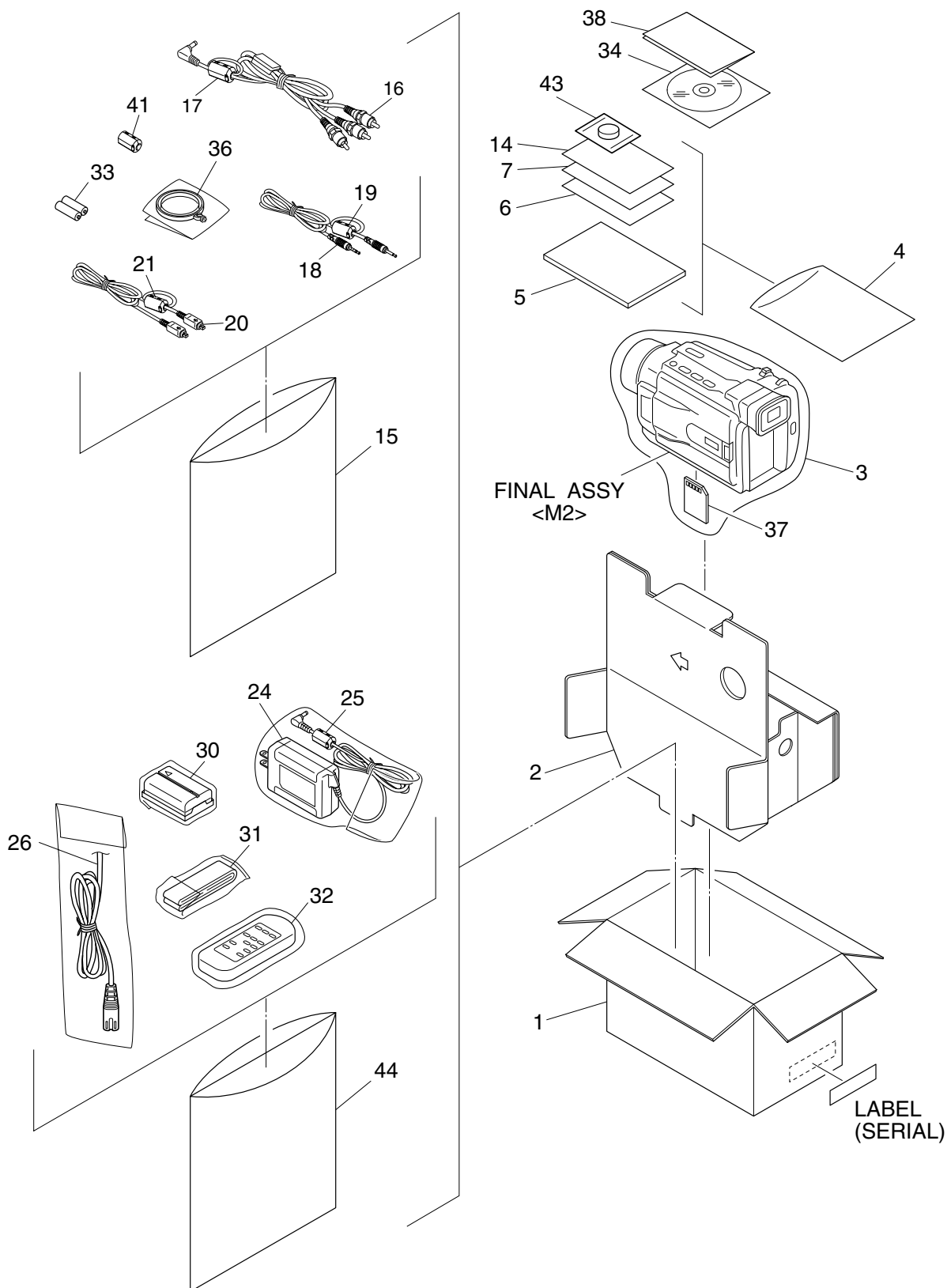
SECTION 5 PARTS LIST

SAFETY PRECAUTION

Parts identified by the ⚠ symbol are critical for safety. Replace only with specified part numbers.

5.1 PACKING AND ACCESSORY ASSEMBLY <M1>

The instruction manual to be provided with this product will differ according to the destination.



#	△ REF No.	PART No.	PART NAME, DESCRIPTION
---	-----------	----------	------------------------

PACKING AND ACCESSORY ASSEMBLY <M1>

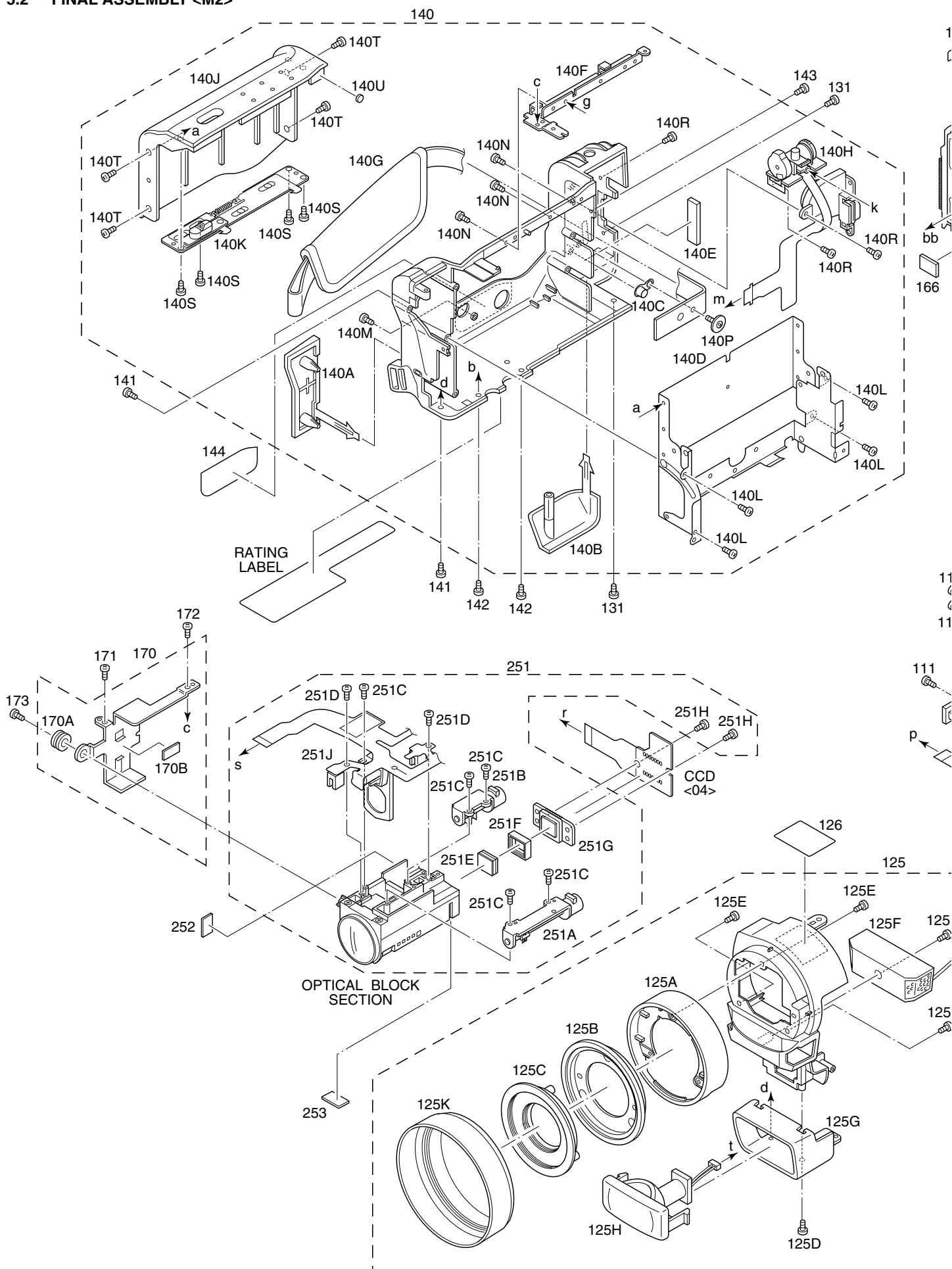
1	LY32567-017B	PACKING CASE,DVL970ED
	LY32567-019A	PACKING CASE,DVL1170ED
2	LY32923-001C	CUSHION
3	LY30023-022A	POLY BAG
4	QPA02003506	POLY BAG
△ 5	LYT0962-001A	INST.BOOK(EN)
△ 6	LYT0962-002A	INST.BOOK(CH)
	LYT0912-001A	INST.BOOK(SOFT.EN),DVL970ED
	LYT0912-011A	INST.BOOK(SOFT.CH),DVL970ED
	LYT0931-001A	INST.BOOK(SOFT.EN),DVL1170ED
	LYT0931-011A	INST.BOOK(SOFT.CH),DVL1170ED
7	LYT0934-001A	SHEET(AGREMENT)
14	BT-59012-1	SER.NET CARD
15	QPA01703005	POLY BAG
16	QAM0212-001	CABLE ASSY,AUDIO/VIDEO CABLE
17	QQR0918-002	CORE FILTER
18	PEAC0428-150	CABLE ASSY,EDITING CABLE
19	QQR0491-002	CORE FILTER
20	QAM0324-001	USB CABLE
21	QQR0491-002	CORE FILTER
△ 24	LY20847-002B	AC ADAPTER,AP-V12ED
25	QQR0917-002	CORE FILTER
△ 26	QMPL120-190-JR	POWER CORD
△ 30	LY32566-001A	BATTERY PACK ASSY,BN-V408U
31	LY20186-001A	SHOULDER STRAP
32	YQ20922R	REMOTE CONTROL ASSY,RM-V711U
33	-	BATTERY,AAA(R03),X2
34	LY32210-023A	CD ROM ASSY,DVL970ED
	LY32210-038A	CD ROM ASSY,DVL1170ED
36	LY43322-002A	CAP(M)ASSY
37	QAM0342-002	MEMORY CARD,8MB(SD)
38	BT-59011-2	WARRANTY CARD
41	QQR0491-002	CORE FILTER
43	-	LI BATTERY,CR2025
44	QPA02503505P	POLY BAG

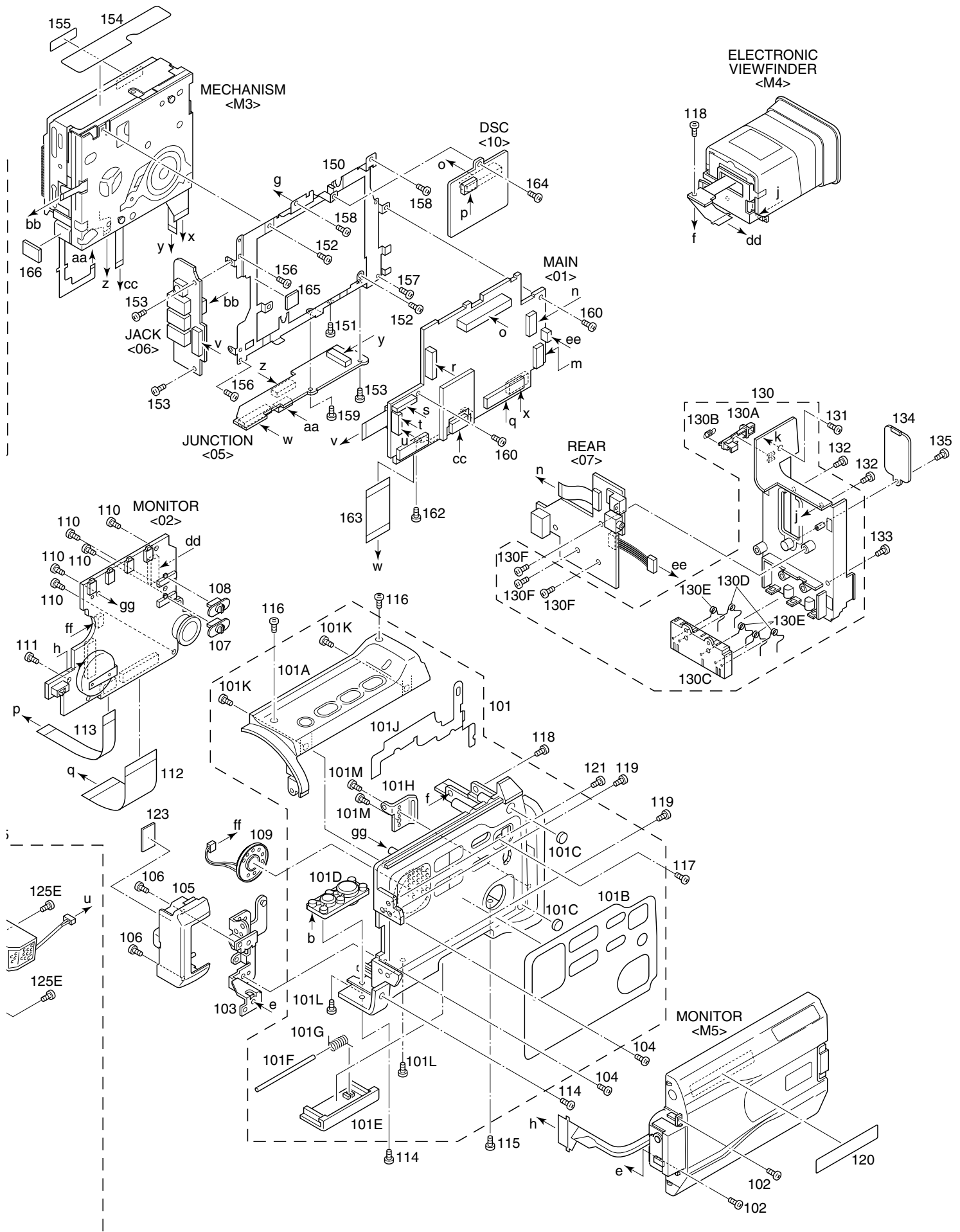
• INSTRUCTIONS

EN ENGLISH

CH CHINESE

5.2 FINAL ASSEMBLY <M2>



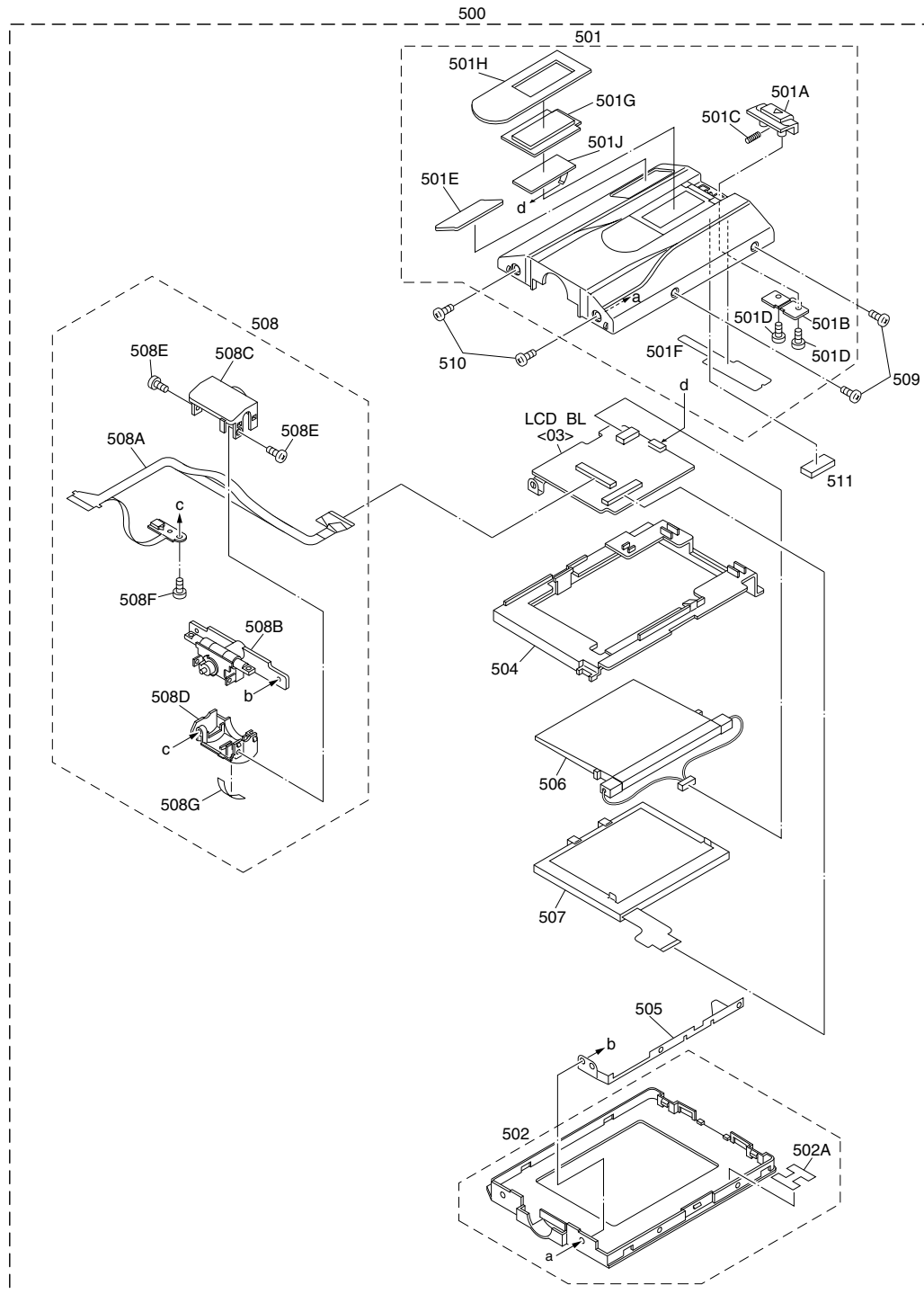


# △ REF No.	PART No.	PART NAME, DESCRIPTION

FINAL ASSEMBLY <M2>		
101	LY20774-005C	UPPER CASE(2.5)ASSY,DVL970ED
	LY20797-004C	UPPER CASE(3.5)ASSY,DVL1170ED
101A	LY20775-001A	TOP COVER(2.5),DVL970ED
	LY20776-001A	TOP COVER(3.5),DVL1170ED
101B	LY32371-003A	PLATE(UPPER)
101C	LY40664-001A	SPACER,X2
101D	LY31019-001A	BASE
101E	LY32375-001B	COVER(SD)
101F	LY43292-001A	SHAFT
101G	LY43293-001A	SPRING
101H	LY43261-001B	HOOK(UPPER)
101J	LY32886-001A	BRACKET(EARTH),DVL970ED
	LY32887-001A	BRACKET(EARTH),DVL1170ED
101K	LY30018-023A	SPECIAL SCREW,X2
101L	LY30018-084A	SPECIAL SCREW,X2
101M	LY30018-084A	SPECIAL SCREW,X2,DVL970ED
	LY30018-038A	SPECIAL SCREW,X2,DVL1170ED
102	LY30018-0D6A	SPECIAL SCREW,X2
103	LY32373-001A	BRACKET(MONITOR)
104	LY30018-066A	SPECIAL SCREW,X2
105	LY20777-001A	COVER(HINGE)
106	LY30018-047A	SPECIAL SCREW,X2
107	LY43263-001A	KNOB(SLIDE)
108	LY43263-002A	KNOB(SLIDE)
109	QAS0048-001	SPEAKER
110	LY30018-023A	SPECIAL SCREW,X5
111	LY30018-047A	SPECIAL SCREW
112	QUQ105-4007AA	FFC WIRE,MONI CN761-MAIN CN101
113	WJT0079-001A	E-CARD WIRE,MONI CN762-DSC CN8002
114	LY30018-084A	SPECIAL SCREW,X2
115	LY30018-084A	SPECIAL SCREW
116	LY30018-047A	SPECIAL SCREW,X2
117	LY30018-047A	SPECIAL SCREW
118	LY30018-064A	SPECIAL SCREW,X2
119	LY30018-099A	SPECIAL SCREW,X2
120	LY43566-003A	STICKER(SIDE)
121	LY30018-084A	SPECIAL SCREW
123	LY30029-0Y5A	SPACER(A)
125	LY32382-006A	FRONT COVER ASSY
125A	LY32383-001A	HOOD
125B	LY32687-001B	RING(MEGA)
125C	LY32705-001A	HOOD(SCREW)
125D	LY30018-084A	SPECIAL SCREW
125E	LY30018-0A7A	SPECIAL SCREW,X4
125F	LY32343-001A	MICROPHONE
125G	LY32388-001A	BASE(LIGHT)
125H	LY32338-001A	DC LIGHT ASSY
125K	LY32387-001A	HOOD(MEGA)
126	LY43567-002A	STICKER(TOP)
130	LY10317-001B	REAR UNIT
130A	LY32408-001A	KNOB(BATT.RELE)
130B	LY30001-018A	TENSION SPRING
130C	LY32409-001A	TERMINAL BASE
130D	LY43291-001A	TERMINAL(R),X2
130E	LY43290-001A	TERMINAL(L),X3
130F	LY30018-084A	SPECIAL SCREW,X3
131	LY30018-084A	SPECIAL SCREW,X3
132	LY30018-0C9A	SPECIAL SCREW,X2
133	LY30018-0C9A	SPECIAL SCREW

# △ REF No.	PART No.	PART NAME, DESCRIPTION
134	LY41691-001A	COVER(JIG)
135	LY30018-037A	SPECIAL SCREW
140	LY20769-002E	LOWER CASE ASSY,DVL970ED
	LY20769-003E	LOWER CASE ASSY,DVL1170ED
140A	LY32363-001A	COVER(JACK)
140B	LY32364-001B	COVER(DC)
140C	LY40592-001A	CAP(GRIP BELT)
140D	LY20770-001A	ARM ASSY
140E	LY30029-0T9A	SPACER(A)
140F	LY32365-001A	PLATE
140G	LY20780-001A	GRIP BELT
140H	LY10304-001A	ZOOM UNIT
140J	LY10309-001A	CASSETTE COVER
140K	LY43254-001B	LOCK ASSY
140L	LY30018-084A	SPECIAL SCREW,X4
140M	LY30018-038A	SPECIAL SCREW
140N	LY30018-038A	SPECIAL SCREW,X3
140P	LY30018-0D1A	SPECIAL SCREW
140R	LY30018-084A	SPECIAL SCREW,X3
140S	LY30018-023A	SPECIAL SCREW,X4
140T	LY30018-038A	SPECIAL SCREW,X4
140U	LY43609-001A	SPACER(B)
141	LY30018-084A	SPECIAL SCREW,X2
142	LY30018-084A	SPECIAL SCREW,X2
143	LY30018-0C9A	SPECIAL SCREW
144	LY43256-001B	PLATE(ADJUST)
150	LY20778-001A	BRACKET(MECHA)
151	YQ43893-4	MINI SCREW
152	LY30019-026B	SPECIAL SCREW,X2
153	QYSPSPT1730R	SCREW,X3
154	LY40698-002A	LABEL(HOUSING)
155	LY40699-002A	LABEL(PUSH)
156	LY30018-084A	SPECIAL SCREW,X2
157	LY30018-066A	SPECIAL SCREW
158	LY30018-066A	SPECIAL SCREW,X2
159	LY30018-038A	SPECIAL SCREW
160	LY30019-038A	SPECIAL SCREW,X2
162	YQ43893-4	MINI SCREW
163	WJT0066-001A	E-CARD WIRE,MAIN CN113-JUNC.CN571
164	LY30019-038A	SPECIAL SCREW
165	LY30029-0V6A	SPACER(A)
166	LY30029-0X1A	SPACER(A)
170	LY43258-001A	BRACKET(OP)ASSY
170A	LY42796-001A	BUSH
170B	LY30016-0N9A	SPACER-A
171	LY30018-084A	SPECIAL SCREW
172	LY30018-066A	SPECIAL SCREW
173	LY30019-029B	SPECIAL SCREW
252	LY30029-0Z7A	SPACER(A)
253	LY30029-0P8A	SPACER(A)
- OPTICAL BLOCK SECTION -		
251	J7C-112A	OPTICAL BLOCK ASSY
251A	LY31572-001A	ZOOM MOTOR
251B	LY31571-001A	FOCUS MOTOR
251C	LY30727-002A	SCREW,X5
251D	LY30727-001A	SCREW,X2
251E	LY43384-001A	OPTICAL LPF
251F	LY43494-001A	SHEET
251G	LYH30375-003A	CCD BASE ASSY
251H	QYSPSGU1750Z	SCREW,X2
251J	LY32721-001A	IRIS MOTOR UNIT

5.3 MONITOR ASSEMBLY <M5> [GR-DVL970ED]



▲ REF No. PART No. PART NAME, DESCRIPTION

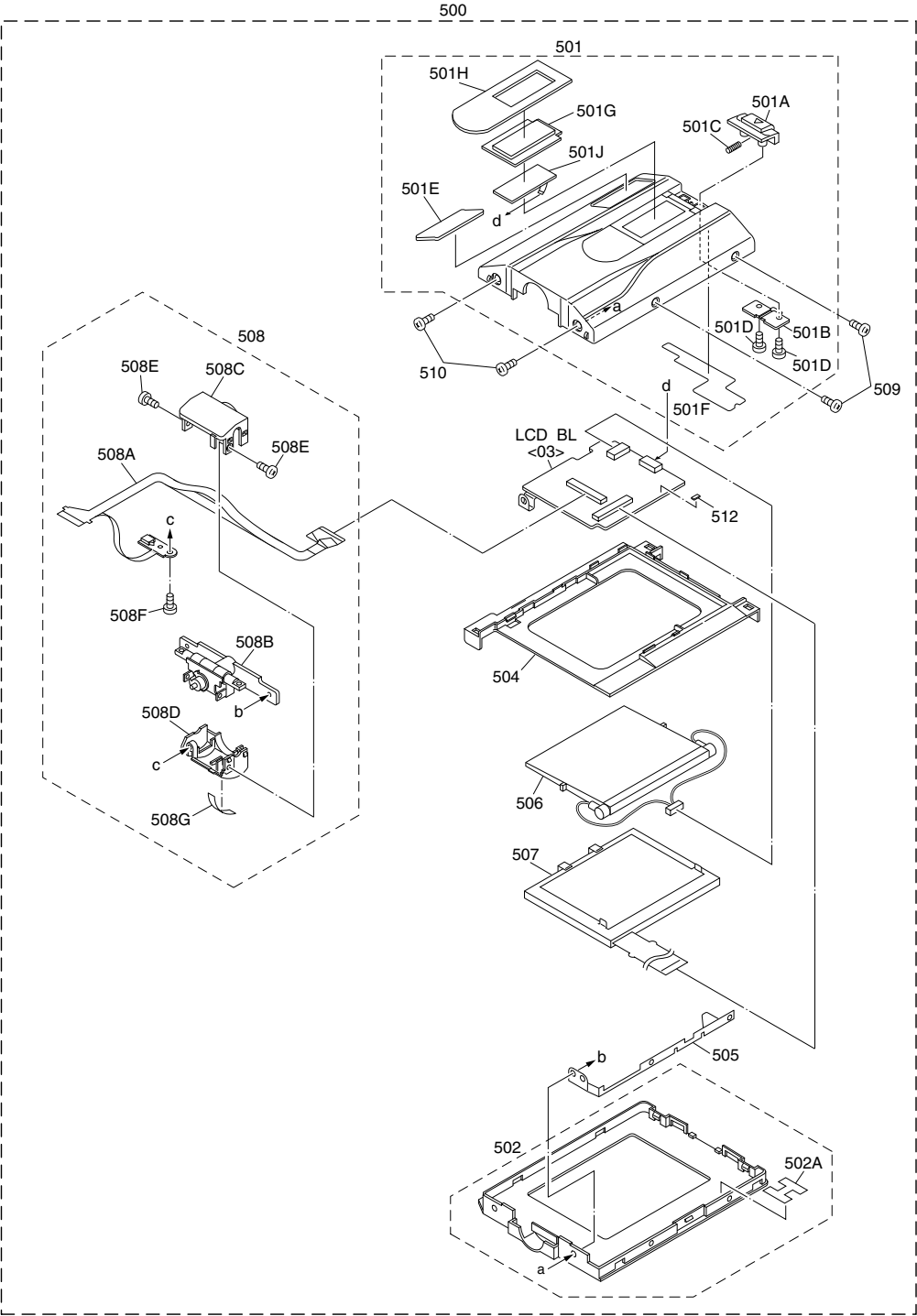
MONITOR ASSEMBLY <M5>

500	LYH20246-043C	MONITOR ASSY
501	LY20863-001B	MONITOR COVER(2.5MEGA)ASSY
501A	LY31620-001A	KNOB(LOCK 1)
501B	LY42180-001A	KNOB(LOCK 2)
501C	LY30002-044A	COMPRESSION SPRING
501D	LY30018-084A	SPECIAL SCREW,X2
501E	LY42883-001A	MARK
501F	LY43784-001A	EARTH MON(2.5)
501G	LY32704-001A	WINDOW(M.MEGA)
501H	LY32706-001B	PLATE(M2.5MEGA)
501J	QLE0017-001	EL PANEL
502	LY20874-001A	MONITOR CASE ASSY

▲ REF No. PART No. PART NAME, DESCRIPTION

502A	LY42388-001A	EARTH MON(2)
504	LY20674-001A	HOLDER(2.5)
505	LY31622-001A	BRACKET(EARTH)
506	QLL0133-001	BACK LIGHT
507	QLD0154-001	LCD MODULE
508	LY32695-001A	MONITOR FPC ASSY
508A	LY32574-001A	MONITOR FPC ASSY
508B	LY32079-001A	HINGE ASSY
508C	LY32380-001A	HINGE COVER(U)
508D	LY32381-001A	HINGE COVER(L)
508E	LY30018-058A	SPECIAL SCREW,X2
508F	LY30018-023A	SPECIAL SCREW
508G	LY30029-0Q5A	SPACER(A)
509	QYSPSPT1730R	SCREW,X2
510	LY30018-0F2A	SPECIAL SCREW,X2
511	LY30029-0Y4A	SPACER(A)

5.3 MONITOR ASSEMBLY <M5> [GR-DVL1170ED]



△ REF No. PART No. PART NAME, DESCRIPTION

MONITOR ASSEMBLY <M5>

500	LYH20246-042C	MONITOR ASSY
501	LY20864-001C	MONITOR COVER(3.5MEGA)ASSY
501A	LY31620-001A	KNOB(LOCK 1)
501B	LY42180-001A	KNOB(LOCK 2)
501C	LY30002-044A	COMPRESSION SPRING
501D	LY30018-084A	SPECIAL SCREW,X2
501E	LY42883-001A	MARK
501F	LY43785-001A	EARTH MON(3.5)
501G	LY32704-002A	WINDOW(M.MEGA)
501H	LY32707-001B	PLATE(M3.5MEGA)
501J	QLE0017-001	EL PANEL
502	LY20598-002A	MONITOR CASE ASSY

# △ REF No.	PART No.	PART NAME, DESCRIPTION
502A	LY42388-001A	EARTH MON(2)
504	LY20568-001A	HOLDER(3.5PWB)
505	LY31622-001A	BRACKET(EARTH)
506	QLL0136-001	BACK LIGHT
507	QLD0203-001	LCD MODULE
508	LY32695-001A	MONITOR FPC ASSY
508A	LY32574-001A	MONITOR FPC ASSY
508B	LY32079-001A	HINGE ASSY
508C	LY32380-001A	HINGE COVER(U)
508D	LY32381-001A	HINGE COVER(L)
508E	LY30018-058A	SPECIAL SCREW,X2
508F	LY30018-023A	SPECIAL SCREW
508G	LY30029-0Q5A	SPACER(A)
509	QYSPSPT1730R	SCREW,X2
510	LY30018-0F2A	SPECIAL SCREW,X2
512	LY30029-0Y6A	SPACER(A)

5.4 ELECTRICAL PARTS LIST

# ▲ REF No.	PART No.	PART NAME, DESCRIPTION	# ▲ REF No.	PART No.	PART NAME, DESCRIPTION

MAIN BOARD ASSEMBLY <01>					
	PW	YB10391QE-03 MAIN BOARD ASSY,DVL970ED		Q1006	DTA114EE DIGI TRANSISTOR
		YB10391EG-03 MAIN BOARD ASSY,DVL1170ED		or PDTA114EE	DIGI TRANSISTOR
				or UN9111J	DIGI TRANSISTOR
	IC1001	UPD703039F1-A38 IC(MICRO C ROM)		Q1007	DTC144EE DIGI TRANSISTOR
		or UPD70F3040F1A38 IC(MICRO C ROM)		or PDC144EE	DIGI TRANSISTOR
	IC1002	RS5C314 IC		or UN9213J	DIGI TRANSISTOR
	IC1003	X25330S8I-2.5-X IC		Q1008	DTA114EE DIGI TRANSISTOR
		or 25LC640-I/SN-X IC		or PDTA114EE	DIGI TRANSISTOR
		or AT25320N-10SI-X IC		or UN9111J	DIGI TRANSISTOR
		or CAT25C32SI IC		Q1009	DTC144EE DIGI TRANSISTOR
	IC1004	TC7S56FU IC		or PDC144EE	DIGI TRANSISTOR
	IC1005	TC7S00FU IC		or UN9213J	DIGI TRANSISTOR
		or SN74AHC1G00K IC		Q1401	DTA114EE DIGI TRANSISTOR
	IC1006	MB90099PFV121 IC(MICRO C ROM)		or PDTA114EE	DIGI TRANSISTOR
	IC1007	SN74AHC1G08K IC		or RN2102	DIGI TRANSISTOR
	IC1008	IC-PST3423U-X IC		or UN9111J	DIGI TRANSISTOR
	IC1009	TC7W08FU IC(DIGITAL)		Q1402	UMC3N DIGI TRANSISTOR
		or SN74AHC2G08T IC		Q1403	UMC3N DIGI TRANSISTOR
	IC1401	UPD703040YF-M10 IC(MICRO C ROM)		Q1601	UMC3N DIGI TRANSISTOR
		or UPD70F3040YFM10 IC(MICRO C ROM)		Q2001	UMX1N PAIR TRANSISTOR
▲	IC1601	BD6631KV IC		Q2002	2SC4617/RS/-X TRANSISTOR
	IC1602	TC7W14FU IC(DIGITAL)		or 2SD2216J/RS/-X	TRANSISTOR
		or SN74AHC2G14T IC		Q2501	UMX18N PAIR TRANSISTOR
	IC2001	AK4560AVQ IC		Q3701	UMT1N PAIR TRANSISTOR
	IC2501	AK4550VT IC		or XP4401	TRANSISTOR
	IC3001	JCY0152 IC		Q3702	UMZ1N PAIR TRANSISTOR
	IC3002	BU2501FV IC		or XP4601	TRANSISTOR
	IC3004	MC74VHC1G04DF IC		Q3703	2SA1774/RS/-X TRANSISTOR
	IC3007	JCY0174 IC		Q3704	2SA1774/RS/-X TRANSISTOR
	IC3501	JCY0132 IC		Q3705	UMT1N PAIR TRANSISTOR
	IC3502	SN74AHC1G04K IC		or XP4401	TRANSISTOR
	IC3701	BA7665FS IC		Q3731	2SC4617/RS/-X TRANSISTOR,DVL1170ED
	IC3731	MM1504XN IC,DVL1170ED		or 2SD2216J/RS/-X	TRANSISTOR,DVL1170ED
	IC3801	JCP8045 IC(DIGITAL),DVL1170ED		Q3732	DTC144EE DIGI TRANSISTOR,DVL1170ED
		JCP8055 IC(DIGITAL),DVL970ED		or UN9213J	DIGI TRANSISTOR,DVL1170ED
	IC4201	HD49334HF IC		Q3733	UMZ1N PAIR TRANSISTOR,DVL1170ED
		or HD49334AHF IC		or XP4601	TRANSISTOR,DVL1170ED
	IC4202	RH5RZ31CA IC		Q3734	2SC4617/RS/-X TRANSISTOR,DVL1170ED
	IC4301	JCY0160-2 IC		or 2SD2216J/RS/-X	TRANSISTOR,DVL1170ED
	IC4302	R1160N151B IC		Q3735	UMZ1N PAIR TRANSISTOR,DVL1170ED
	IC4303	MM1385NN IC		or XP4601	TRANSISTOR,DVL1170ED
	IC4802	NJM2143R IC		Q4801	2SC4655/BC/-X TRANSISTOR
	IC4803	NJM2143R IC		Q4802	2SC4617/RS/-X TRANSISTOR
	IC4804	LM358DR2 IC		Q4803	DTC144EE DIGI TRANSISTOR
	IC4807	TC7W66FK IC		or PDC144EE	DIGI TRANSISTOR
	IC4851	UPD16879GS IC		or RN1104	DIGI TRANSISTOR
	IC5001	CXD3602R IC		or UN9213J	DIGI TRANSISTOR
	IC5002	W194-70G-X IC		Q4804	DTA144EE DIGI TRANSISTOR
	IC5003	MM1385DN IC		or PDTA144EE	DIGI TRANSISTOR
	IC6001	S-80842ANNP-W IC		or RN2104	DIGI TRANSISTOR
		or S-80842CNNB-W IC		or UN9113J	DIGI TRANSISTOR
	IC6101	FA3698F IC		Q4805	DTA143EE DIGI TRANSISTOR
	Q1001	DTC124EE DIGI TRANSISTOR		or RN2101	DIGI TRANSISTOR
		or UN9212J DIGI TRANSISTOR		or UN911LJ	DIGI TRANSISTOR
	Q1002	2SC4617/QR/-X TRANSISTOR		Q4806	2SC4617/RS/-X TRANSISTOR
		or 2SD2216J/QR/-X TRANSISTOR		Q4851	2SC4617/RS/-X TRANSISTOR
	Q1003	DTC143EE DIGI TRANSISTOR		Q6001	DTC144EE DIGI TRANSISTOR
		or UN921LJ DIGI TRANSISTOR		or PDC144EE	DIGI TRANSISTOR
	Q1004	DTC143XE DIGI TRANSISTOR		or RN1104	DIGI TRANSISTOR
	Q1005	2SJ347 MOS FET		or UN9213J	DIGI TRANSISTOR
				Q6002	MCH6613 MOS FET
				Q6004	2SB1188/QR/-W TRANSISTOR
				Q6201	MCH3308 MOS FET

# △ REF No.	PART No.	PART NAME, DESCRIPTION	
Q6202	2SA1577/RS/-X	TRANSISTOR	
Q6203	MCH3308	MOS FET	
Q6204	CPH3314	MOS FET	
Q6205	CPH3101	TRANSISTOR	
Q6206	2SC4617/RS/-X	TRANSISTOR	
Q6207	2SD2444K	TRANSISTOR	
Q6208	MCH3308	MOS FET	
Q6210	MCH3308	MOS FET	
Q6211	MCH3308	MOS FET	
Q6212	HN1C01FU/G/-X	PAIR TRANSISTOR	
	or PUMX1	PAIR TRANSISTOR	
	or UMX1N	PAIR TRANSISTOR	
Q6213	2SA1577/RS/-X	TRANSISTOR	
Q6214	DTC144EE	DIGI TRANSISTOR	
	or PDTC144EE	DIGI TRANSISTOR	
	or RN1104	DIGI TRANSISTOR	
	or UN9213J	DIGI TRANSISTOR	
Q6215	HN1A01FU/G/-X	PAIR TRANSISTOR	
	or PUMT1	PAIR TRANSISTOR	
	or UMT1N	PAIR TRANSISTOR	
Q6216	2SC4617/RS/-X	TRANSISTOR	
Q6217	UMZ1N	PAIR TRANSISTOR	
Q6701	CPH3314	MOS FET	
D1001	DA221	DIODE	
D1002	1SS376	DIODE	
D1602	DAP222	DIODE	
D1603	DAP222	DIODE	
D1604	DAP222	DIODE	
D3001	EC2C01C	VARI CAP DIODE	
D3002	EC2C01C	VARI CAP DIODE	
D3003	EC2C01C	VARI CAP DIODE	
D3004	MA2Z720	SB DIODE	
D5001	1SS355	DIODE	
△ D6002	RB715F	SB DIODE	
D6201	CRS01	SB DIODE	
D6202	CRS01	SB DIODE	
D6203	CRS01	SB DIODE	
D6204	CRS01	SB DIODE	
D6205	CRS01	SB DIODE	
D6206	RB480Y	SB DIODE	
D6207	UDZS9.1B	ZENER DIODE	
D6208	RB480Y	SB DIODE	
D6701	EP10HY03	SB DIODE	
D6702	EP10HY03	SB DIODE	
R101	NRSA63J-0R0X	MG RESISTOR	0Ω,1/16W
R102	NRSA63J-0R0X	MG RESISTOR	0Ω,1/16W
R1001	NRSA6AJ-104W	MG RESISTOR	100kΩ,1/16W
R1002	NRSA6AJ-224W	MG RESISTOR	220kΩ,1/16W
R1003	NRSA6AJ-472W	MG RESISTOR	4.7kΩ,1/16W
R1004	NRSA6AJ-103W	MG RESISTOR	10kΩ,1/16W
R1005	NRSA6AJ-153W	MG RESISTOR	15kΩ,1/16W
R1006	NRSA6AJ-103W	MG RESISTOR	10kΩ,1/16W
R1007	NRSA6AJ-334W	MG RESISTOR	330kΩ,1/16W
R1008	NRSA6AJ-102W	MG RESISTOR	1kΩ,1/16W
R1009	NRSA6AJ-561W	MG RESISTOR	560Ω,1/16W
R1010	NRSA6AJ-561W	MG RESISTOR	560Ω,1/16W
R1015	NRSA6AJ-474W	MG RESISTOR	470kΩ,1/16W
R1017	NRSA6AJ-561W	MG RESISTOR	560Ω,1/16W
R1018	NRSA6AJ-103W	MG RESISTOR	10kΩ,1/16W
R1019	NRSA6AJ-623W	MG RESISTOR	62kΩ,1/16W
R1020	NRSA6AJ-331W	MG RESISTOR	330Ω,1/16W
R1021	NRSA6AJ-331W	MG RESISTOR	330Ω,1/16W
R1022	NRSA6AJ-331W	MG RESISTOR	330Ω,1/16W

# △ REF No.	PART No.	PART NAME, DESCRIPTION	
R1023	NRSA6AJ-103W	MG RESISTOR	10kΩ,1/16W
R1024	NRSA6AJ-823W	MG RESISTOR	82kΩ,1/16W
R1026	NRSA6AJ-472W	MG RESISTOR	4.7kΩ,1/16W
R1027	NRSA6AJ-104W	MG RESISTOR	100kΩ,1/16W
R1028	NRSA6AJ-185W	MG RESISTOR	1.8MΩ,1/16W
R1029	NRSA6AJ-473W	MG RESISTOR	47kΩ,1/16W
R1030	NRSA6AJ-104W	MG RESISTOR	100kΩ,1/16W
R1031	NRSA6AJ-102W	MG RESISTOR	1kΩ,1/16W
R1032	NRSA6AJ-104W	MG RESISTOR	100kΩ,1/16W
R1036	NRSA6AJ-102W	MG RESISTOR	1kΩ,1/16W
R1037	NRSA6AJ-103W	MG RESISTOR	10kΩ,1/16W
R1038	NRSA6AJ-104W	MG RESISTOR	100kΩ,1/16W
R1039	NRSA6AJ-103W	MG RESISTOR	10kΩ,1/16W
R1044	NRSA6AJ-123W	MG RESISTOR	12kΩ,1/16W
R1045	NRSA6AJ-822W	MG RESISTOR	8.2kΩ,1/16W
R1046	NRSA6AJ-103W	MG RESISTOR	10kΩ,1/16W
R1047	NRSA6AJ-473W	MG RESISTOR	47kΩ,1/16W
R1048	NRSA6AJ-104W	MG RESISTOR	100kΩ,1/16W
R1049	NRSA6AJ-393W	MG RESISTOR	39kΩ,1/16W
R1050	NRSA6AJ-223W	MG RESISTOR	22kΩ,1/16W
R1051	NRSA6AJ-272W	MG RESISTOR	2.7kΩ,1/16W
R1052	NRSA6AJ-183W	MG RESISTOR	18kΩ,1/16W
R1053	NRSA6AJ-154W	MG RESISTOR	150kΩ,1/16W
R1054	NRSA6AJ-473W	MG RESISTOR	47kΩ,1/16W
R1055	NRSA6AJ-103W	MG RESISTOR	10kΩ,1/16W
R1056	NRSA6AJ-472W	MG RESISTOR	4.7kΩ,1/16W
R1057	NRSA6AJ-473W	MG RESISTOR	47kΩ,1/16W
R1058	NRSA6AJ-222W	MG RESISTOR	2.2kΩ,1/16W
R1060	NRSA6AJ-473W	MG RESISTOR	47kΩ,1/16W
R1061	NRSA6AJ-473W	MG RESISTOR	47kΩ,1/16W
R1066	NRSA6AJ-473W	MG RESISTOR	47kΩ,1/16W
R1071	NRSA6AJ-474W	MG RESISTOR	470kΩ,1/16W
R1072	NRSA6AJ-104W	MG RESISTOR	100kΩ,1/16W
R1076	NRSA6AJ-0R0W	MG RESISTOR	0Ω,1/16W
R1077	NRSA6AJ-0R0W	MG RESISTOR	0Ω,1/16W
R1078	NRSA6AJ-102W	MG RESISTOR	1kΩ,1/16W
R1079	NRSA6AJ-102W	MG RESISTOR	1kΩ,1/16W
R1080	NRSA6AJ-102W	MG RESISTOR	1kΩ,1/16W
R1081	NRSA6AJ-103W	MG RESISTOR	10kΩ,1/16W
R1082	NRSA6AJ-103W	MG RESISTOR	10kΩ,1/16W
R1083	NRSA6AJ-103W	MG RESISTOR	10kΩ,1/16W
R1401	NRSA6AJ-105W	MG RESISTOR	1MΩ,1/16W
R1402	NRSA6AJ-102W	MG RESISTOR	1kΩ,1/16W
R1403	NRSA6AJ-103W	MG RESISTOR	10kΩ,1/16W
R1404	NRSA6AJ-472W	MG RESISTOR	4.7kΩ,1/16W
R1405	NRSA6AJ-332W	MG RESISTOR	3.3kΩ,1/16W
R1406	NRSA6AJ-332W	MG RESISTOR	3.3kΩ,1/16W
R1407	NRSA6AJ-332W	MG RESISTOR	3.3kΩ,1/16W
R1408	NRSA6AD-753W	MG RESISTOR	75kΩ,1/16W
R1409	NRSA6AJ-334W	MG RESISTOR	330kΩ,1/16W
R1411	NRSA6AJ-332W	MG RESISTOR	3.3kΩ,1/16W
R1412	NRSA6AJ-332W	MG RESISTOR	3.3kΩ,1/16W
R1413	NRSA6AJ-332W	MG RESISTOR	3.3kΩ,1/16W
R1414	NRSA6AJ-332W	MG RESISTOR	3.3kΩ,1/16W
R1415	NRSA6AJ-472W	MG RESISTOR	4.7kΩ,1/16W
R1416	NRSA6AJ-472W	MG RESISTOR	4.7kΩ,1/16W
R1417	NRSA6AJ-101W	MG RESISTOR	100Ω,1/16W
R1421	NRSA6AJ-103W	MG RESISTOR	10kΩ,1/16W
R1422	NRSA6AJ-153W	MG RESISTOR	15kΩ,1/16W
R1423	NRSA6AJ-820W	MG RESISTOR	82Ω,1/16W
R1425	NRSA6AJ-473W	MG RESISTOR	47kΩ,1/16W
R1601	NRSA6AJ-681W	MG RESISTOR	680Ω,1/16W
R1602	NRSA6AJ-124W	MG RESISTOR	120kΩ,1/16W

# ▲ REF No.	PART No.	PART NAME, DESCRIPTION		# ▲ REF No.	PART No.	PART NAME, DESCRIPTION	
R1603	NRSA6AJ-472W	MG RESISTOR	4.7kΩ, 1/16W	R2115	NRSA6AJ-472W	MG RESISTOR	4.7kΩ, 1/16W
R1604	NRSA6AJ-104W	MG RESISTOR	100kΩ, 1/16W	R2116	NRSA6AJ-472W	MG RESISTOR	4.7kΩ, 1/16W
R1605	NRV142F-R22X	CMF RESISTOR	0.22Ω, 1/4W	R2117	NRSA6AJ-472W	MG RESISTOR	4.7kΩ, 1/16W
R1609	NRV142F-R33X	CMF RESISTOR	0.33Ω, 1/4W	R2118	NRSA6AJ-472W	MG RESISTOR	4.7kΩ, 1/16W
R1610	NRSA6AJ-471W	MG RESISTOR	470Ω, 1/16W	R2119	NRSA6AJ-332W	MG RESISTOR	3.3kΩ, 1/16W
R1611	NRSA6AJ-471W	MG RESISTOR	470Ω, 1/16W	R2120	NRSA6AJ-332W	MG RESISTOR	3.3kΩ, 1/16W
R1612	NRSA6AJ-104W	MG RESISTOR	100kΩ, 1/16W	R2121	NRSA6AJ-473W	MG RESISTOR	47kΩ, 1/16W
R1613	NRSA6AJ-102W	MG RESISTOR	1kΩ, 1/16W	R2122	NRSA6AJ-473W	MG RESISTOR	47kΩ, 1/16W
R1614	NRSA6AJ-102W	MG RESISTOR	1kΩ, 1/16W	R2123	NRSA6AJ-104W	MG RESISTOR	100kΩ, 1/16W
R1615	NRSA6AJ-102W	MG RESISTOR	1kΩ, 1/16W	R2124	NRSA6AJ-104W	MG RESISTOR	100kΩ, 1/16W
R1616	NRSA6AJ-391W	MG RESISTOR	390Ω, 1/16W	R2127	NRSA6AJ-0R0W	MG RESISTOR	0Ω, 1/16W
R1617	NRSA6AJ-683W	MG RESISTOR	68kΩ, 1/16W	R2128	NRSA6AJ-0R0W	MG RESISTOR	0Ω, 1/16W
R1618	NRSA6AJ-683W	MG RESISTOR	68kΩ, 1/16W	R2201	NRSA6AJ-122W	MG RESISTOR	1.2kΩ, 1/16W
R1619	NRSA6AJ-393W	MG RESISTOR	39kΩ, 1/16W	R2202	NRSA6AJ-122W	MG RESISTOR	1.2kΩ, 1/16W
R1620	NRSA6AJ-103W	MG RESISTOR	10kΩ, 1/16W	R2203	NRSA6AJ-0R0W	MG RESISTOR, DVL1170ED	0Ω, 1/16W
R1621	NRSA6AJ-103W	MG RESISTOR	10kΩ, 1/16W	R2501	NRSA6AJ-0R0W	MG RESISTOR	0Ω, 1/16W
R1622	NRSA6AJ-103W	MG RESISTOR	10kΩ, 1/16W	R2502	NRSA6AJ-0R0W	MG RESISTOR	0Ω, 1/16W
R1624	NRVA6AD-123W	CMF RESISTOR	12kΩ, 1/16W	R2504	NRSA6AJ-0R0W	MG RESISTOR	0Ω, 1/16W
R1625	NRSA6AJ-181W	MG RESISTOR	180Ω, 1/16W	R2505	NRSA6AJ-273W	MG RESISTOR	27kΩ, 1/16W
R1626	NRSA6AJ-181W	MG RESISTOR	180Ω, 1/16W	R2506	NRSA6AJ-273W	MG RESISTOR	27kΩ, 1/16W
R1628	NRVA6AD-271W	CMF RESISTOR	270Ω, 1/16W	R2507	NRSA6AJ-223W	MG RESISTOR	22kΩ, 1/16W
R1629	NRSA6AJ-564W	MG RESISTOR	560kΩ, 1/16W	R2508	NRSA6AJ-223W	MG RESISTOR	22kΩ, 1/16W
R1630	NRSA6AJ-0R0W	MG RESISTOR	0Ω, 1/16W	R2509	NRSA6AJ-564W	MG RESISTOR	560kΩ, 1/16W
R1631	NRSA6AJ-0R0W	MG RESISTOR	0Ω, 1/16W	R2510	NRSA6AJ-564W	MG RESISTOR	560kΩ, 1/16W
R1635	NRSA6AJ-472W	MG RESISTOR	4.7kΩ, 1/16W	R2511	NRSA6AJ-103W	MG RESISTOR	10kΩ, 1/16W
R1636	NRSA6AJ-103W	MG RESISTOR	10kΩ, 1/16W	R2512	NRSA6AJ-103W	MG RESISTOR	10kΩ, 1/16W
R1637	NRSA6AJ-154W	MG RESISTOR	150kΩ, 1/16W	R2513	NRSA6AJ-332W	MG RESISTOR	3.3kΩ, 1/16W
R2001	NRSA6AJ-0R0W	MG RESISTOR	0Ω, 1/16W	R3002	NRSA6AJ-103W	MG RESISTOR	10kΩ, 1/16W
R2004	NRSA6AJ-0R0W	MG RESISTOR	0Ω, 1/16W	R3003	NRSA6AJ-105W	MG RESISTOR	1MΩ, 1/16W
R2006	NRSA6AJ-100W	MG RESISTOR	10Ω, 1/16W	R3004	NRSA6AJ-103W	MG RESISTOR	10kΩ, 1/16W
R2007	NRSA6AJ-102W	MG RESISTOR	1kΩ, 1/16W	R3005	NRSA6AJ-100W	MG RESISTOR	10Ω, 1/16W
R2008	NRSA6AJ-102W	MG RESISTOR	1kΩ, 1/16W	R3006	NRSA6AJ-100W	MG RESISTOR	10Ω, 1/16W
R2009	NRSA6AJ-332W	MG RESISTOR	3.3kΩ, 1/16W	R3007	NRSA6AJ-562W	MG RESISTOR	5.6kΩ, 1/16W
R2010	NRSA6AJ-273W	MG RESISTOR, DVL1170ED	27kΩ, 1/16W	R3008	NRSA6AJ-222W	MG RESISTOR	2.2kΩ, 1/16W
R2011	NRSA6AJ-0R0W	MG RESISTOR, DVL970ED	0Ω, 1/16W	R3009	NRSA6AJ-103W	MG RESISTOR	10kΩ, 1/16W
	NRSA6AJ-223W	MG RESISTOR, DVL1170ED	22kΩ, 1/16W	R3010	NRSA6AJ-103W	MG RESISTOR	10kΩ, 1/16W
R2012	NRSA6AJ-273W	MG RESISTOR, DVL1170ED	27kΩ, 1/16W	R3011	NRSA6AJ-224W	MG RESISTOR	220kΩ, 1/16W
R2013	NRSA6AJ-0R0W	MG RESISTOR, DVL970ED	0Ω, 1/16W	R3013	NRSA6AJ-242W	MG RESISTOR	2.4kΩ, 1/16W
	NRSA6AJ-223W	MG RESISTOR, DVL1170ED	22kΩ, 1/16W	R3014	NRSA6AJ-392W	MG RESISTOR	3.9kΩ, 1/16W
R2014	NRSA6AJ-820W	MG RESISTOR	82Ω, 1/16W	R3015	NRSA6AJ-392W	MG RESISTOR	3.9kΩ, 1/16W
R2015	NRSA6AJ-820W	MG RESISTOR	82Ω, 1/16W	R3016	NRVA6AD-560W	CMF RESISTOR	56Ω, 1/16W
R2016	NRSA6AJ-820W	MG RESISTOR	82Ω, 1/16W	R3017	NRVA6AD-560W	CMF RESISTOR	56Ω, 1/16W
R2017	NRSA6AJ-102W	MG RESISTOR	1kΩ, 1/16W	R3018	NRVA6AD-560W	CMF RESISTOR	56Ω, 1/16W
R2018	NRSA6AJ-103W	MG RESISTOR	10kΩ, 1/16W	R3019	NRVA6AD-560W	CMF RESISTOR	56Ω, 1/16W
R2019	NRSA6AJ-2R7W	MG RESISTOR	2.7Ω, 1/16W	R3020	NRVA6AD-512W	CMF RESISTOR	5.1kΩ, 1/16W
R2020	NRSA6AJ-2R7W	MG RESISTOR	2.7Ω, 1/16W	R3027	NRSA6AJ-103W	MG RESISTOR	10kΩ, 1/16W
R2023	NRSA6AJ-102W	MG RESISTOR	1kΩ, 1/16W	R3029	NRSA6AJ-153W	MG RESISTOR	15kΩ, 1/16W
R2024	NRSA6AJ-183W	MG RESISTOR	18kΩ, 1/16W	R3030	NRSA6AJ-224W	MG RESISTOR	220kΩ, 1/16W
R2025	NRSA6AJ-102W	MG RESISTOR	1kΩ, 1/16W	R3031	NRSA6AJ-224W	MG RESISTOR	220kΩ, 1/16W
R2028	NRSA6AJ-224W	MG RESISTOR	220kΩ, 1/16W	R3032	NRSA6AJ-105W	MG RESISTOR	1MΩ, 1/16W
R2029	NRSA6AJ-0R0W	MG RESISTOR	0Ω, 1/16W	R3033	NRSA6AJ-103W	MG RESISTOR	10kΩ, 1/16W
R2103	NRSA6AJ-153W	MG RESISTOR	15kΩ, 1/16W	R3034	NRSA6AJ-222W	MG RESISTOR	2.2kΩ, 1/16W
R2104	NRSA6AJ-153W	MG RESISTOR	15kΩ, 1/16W	R3036	NRSA6AJ-103W	MG RESISTOR	10kΩ, 1/16W
R2105	NRSA6AJ-472W	MG RESISTOR	4.7kΩ, 1/16W	R3037	NRSA6AJ-681W	MG RESISTOR	680Ω, 1/16W
R2106	NRSA6AJ-472W	MG RESISTOR	4.7kΩ, 1/16W	R3040	NRSA6AJ-222W	MG RESISTOR	2.2kΩ, 1/16W
R2107	NRSA6AJ-153W	MG RESISTOR	15kΩ, 1/16W	R3041	NRSA6AJ-561W	MG RESISTOR	560Ω, 1/16W
R2108	NRSA6AJ-153W	MG RESISTOR	15kΩ, 1/16W	R3042	NRSA6AJ-561W	MG RESISTOR	560Ω, 1/16W
R2109	NRSA6AJ-182W	MG RESISTOR	1.8kΩ, 1/16W	R3043	NRSA6AJ-122W	MG RESISTOR	1.2kΩ, 1/16W
R2110	NRSA6AJ-182W	MG RESISTOR	1.8kΩ, 1/16W	R3044	NRSA6AJ-152W	MG RESISTOR	1.5kΩ, 1/16W
R2111	NRSA6AJ-153W	MG RESISTOR	15kΩ, 1/16W	R3045	NRSA6AJ-123W	MG RESISTOR	12kΩ, 1/16W
R2112	NRSA6AJ-153W	MG RESISTOR	15kΩ, 1/16W	R3046	NRSA6AJ-823W	MG RESISTOR	82kΩ, 1/16W
R2113	NRSA6AJ-222W	MG RESISTOR	2.2kΩ, 1/16W	R3049	NRSA6AJ-100W	MG RESISTOR	10Ω, 1/16W
R2114	NRSA6AJ-222W	MG RESISTOR	2.2kΩ, 1/16W	R3051	NRSA6AJ-0R0W	MG RESISTOR	0Ω, 1/16W

# △ REF No.	PART No.	PART NAME, DESCRIPTION		# △ REF No.	PART No.	PART NAME, DESCRIPTION	
R3057	NRSA6AJ-100W	MG RESISTOR	10Ω,1/16W	R4201	NRSA6AJ-0R0W	MG RESISTOR	0Ω,1/16W
R3059	NRSA6AJ-101W	MG RESISTOR	100Ω,1/16W	R4203	NRSA6AJ-153W	MG RESISTOR	15kΩ,1/16W
R3071	NRSA6AJ-0R0W	MG RESISTOR	0Ω,1/16W	R4204	NRSA6AJ-100W	MG RESISTOR	10Ω,1/16W
R3074	NRSA6AJ-0R0W	MG RESISTOR	0Ω,1/16W	R4205	NRSA6AJ-100W	MG RESISTOR	10Ω,1/16W
R3501	NRSA6AJ-471W	MG RESISTOR	470Ω,1/16W	R4301	NRSA6AJ-220W	MG RESISTOR	22Ω,1/16W
R3502	NRSA6AJ-104W	MG RESISTOR	100kΩ,1/16W	R4303	NRSA6AJ-220W	MG RESISTOR	22Ω,1/16W
R3503	NRSA6AJ-102W	MG RESISTOR	1kΩ,1/16W	R4304	NRSA6AJ-220W	MG RESISTOR	22Ω,1/16W
R3504	NRSA6AD-241W	MG RESISTOR	240Ω,1/16W	R4305	NRSA6AJ-101W	MG RESISTOR	100Ω,1/16W
R3505	NRSA6AD-241W	MG RESISTOR	240Ω,1/16W	R4306	NRSA6AJ-0R0W	MG RESISTOR	0Ω,1/16W
R3506	NRSA6AD-241W	MG RESISTOR	240Ω,1/16W	R4307	NRSA6AJ-0R0W	MG RESISTOR	0Ω,1/16W
R3507	NRSA6AD-241W	MG RESISTOR	240Ω,1/16W	R4308	NRSA6AJ-222W	MG RESISTOR	2.2kΩ,1/16W
R3508	NRSA6AJ-223W	MG RESISTOR	22kΩ,1/16W	R4309	NRSA6AJ-101W	MG RESISTOR	100Ω,1/16W
R3511	NRSA6AJ-101W	MG RESISTOR	100Ω,1/16W	R4310	NRSA6AJ-101W	MG RESISTOR	100Ω,1/16W
R3521	NRSA6AJ-0R0W	MG RESISTOR	0Ω,1/16W	R4311	NRSA6AJ-101W	MG RESISTOR	100Ω,1/16W
R3522	NRSA6AJ-0R0W	MG RESISTOR	0Ω,1/16W	R4312	NRSA6AJ-101W	MG RESISTOR	100Ω,1/16W
R3701	NRSA6AD-271W	MG RESISTOR	270Ω,1/16W	R4313	NRSA6AJ-101W	MG RESISTOR	100Ω,1/16W
R3702	NRSA6AD-271W	MG RESISTOR	270Ω,1/16W	R4315	NRSA6AJ-0R0W	MG RESISTOR	0Ω,1/16W
R3703	NRSA6AJ-332W	MG RESISTOR	3.3kΩ,1/16W	R4316	NRSA6AJ-0R0W	MG RESISTOR	0Ω,1/16W
R3704	NRSA6AD-301W	MG RESISTOR	300Ω,1/16W	R4320	NRSA6AJ-0R0W	MG RESISTOR	0Ω,1/16W
R3705	NRSA6AD-301W	MG RESISTOR	300Ω,1/16W	R4321	NRSA6AJ-0R0W	MG RESISTOR	0Ω,1/16W
R3706	NRSA6AJ-332W	MG RESISTOR	3.3kΩ,1/16W	R4322	NRSA6AJ-0R0W	MG RESISTOR	0Ω,1/16W
R3707	NRSA6AD-680W	MG RESISTOR	68Ω,1/16W	R4323	NRSA6AJ-0R0W	MG RESISTOR	0Ω,1/16W
R3708	NRSA6AD-680W	MG RESISTOR	68Ω,1/16W	R4804	NRSA6AJ-681W	MG RESISTOR	680Ω,1/16W
R3709	NRSA6AD-680W	MG RESISTOR	68Ω,1/16W	R4805	NRSA6AJ-103W	MG RESISTOR	10kΩ,1/16W
R3710	NRSA6AJ-103W	MG RESISTOR	10kΩ,1/16W	R4806	NRSA6AJ-683W	MG RESISTOR	68kΩ,1/16W
R3711	NRSA6AJ-103W	MG RESISTOR	10kΩ,1/16W	R4807	NRSA6AJ-563W	MG RESISTOR	56kΩ,1/16W
R3712	NRSA6AJ-105W	MG RESISTOR	1MΩ,1/16W	R4808	NRSA6AJ-243W	MG RESISTOR	24kΩ,1/16W
R3713	NRSA6AJ-104W	MG RESISTOR	100kΩ,1/16W	R4809	NRSA6AJ-561W	MG RESISTOR	560Ω,1/16W
R3714	NRSA6AJ-823W	MG RESISTOR	82kΩ,1/16W	R4810	NRSA6AJ-103W	MG RESISTOR	10kΩ,1/16W
R3715	NRSA6AJ-103W	MG RESISTOR	10kΩ,1/16W	R4811	NRSA6AJ-684W	MG RESISTOR	680kΩ,1/16W
R3721	NRSA6AD-151W	MG RESISTOR	150Ω,1/16W	R4812	NRSA6AJ-153W	MG RESISTOR	15kΩ,1/16W
R3722	NRSA6AD-131W	MG RESISTOR	130Ω,1/16W	R4814	NRSA6AJ-105W	MG RESISTOR	1MΩ,1/16W
R3723	NRSA6AJ-332W	MG RESISTOR	3.3kΩ,1/16W	R4815	NRSA6AJ-472W	MG RESISTOR	4.7kΩ,1/16W
R3724	NRSA6AJ-472W	MG RESISTOR	4.7kΩ,1/16W	R4816	NRSA6AJ-105W	MG RESISTOR	1MΩ,1/16W
R3725	NRSA6AD-131W	MG RESISTOR	130Ω,1/16W	R4817	NRSA6AJ-334W	MG RESISTOR	330kΩ,1/16W
R3726	NRSA6AJ-472W	MG RESISTOR	4.7kΩ,1/16W	R4818	NRSA6AJ-154W	MG RESISTOR	150kΩ,1/16W
R3727	NRSA6AJ-472W	MG RESISTOR	4.7kΩ,1/16W	R4819	NRSA6AJ-103W	MG RESISTOR	10kΩ,1/16W
R3728	NRSA6AD-131W	MG RESISTOR	130Ω,1/16W	R4820	NRSA6AJ-104W	MG RESISTOR	100kΩ,1/16W
R3730	NRSA6AJ-472W	MG RESISTOR	4.7kΩ,1/16W	R4821	NRSA6AJ-104W	MG RESISTOR	100kΩ,1/16W
R3731	NRSA6AJ-472W	MG RESISTOR,DVL1170ED	4.7kΩ,1/16W	R4822	NRSA6AJ-333W	MG RESISTOR	33kΩ,1/16W
R3732	NRSA6AJ-101W	MG RESISTOR,DVL1170ED	100Ω,1/16W	R4823	NRSA6AJ-102W	MG RESISTOR	1kΩ,1/16W
R3733	NRSA6AD-561W	MG RESISTOR,DVL1170ED	560Ω,1/16W	R4824	NRSA6AJ-472W	MG RESISTOR	4.7kΩ,1/16W
R3734	NRSA6AJ-822W	MG RESISTOR,DVL1170ED	8.2kΩ,1/16W	R4825	NRSA6AJ-222W	MG RESISTOR	2.2kΩ,1/16W
R3735	NRSA6AD-182W	MG RESISTOR,DVL1170ED	1.8kΩ,1/16W	R4826	NRSA6AJ-473W	MG RESISTOR	47kΩ,1/16W
R3736	NRSA6AJ-183W	MG RESISTOR,DVL1170ED	18kΩ,1/16W	R4827	NRSA6AJ-0R0W	MG RESISTOR	0Ω,1/16W
R3737	NRSA6AJ-183W	MG RESISTOR,DVL1170ED	18kΩ,1/16W	R4828	NRSA6AJ-0R0W	MG RESISTOR	0Ω,1/16W
R3738	NRSA6AJ-681W	MG RESISTOR,DVL1170ED	680Ω,1/16W	R4833	NRSA6AJ-104W	MG RESISTOR	100kΩ,1/16W
R3739	NRSA6AJ-821W	MG RESISTOR,DVL1170ED	820Ω,1/16W	R4836	NRSA6AJ-0R0W	MG RESISTOR	0Ω,1/16W
R3740	NRSA6AJ-821W	MG RESISTOR,DVL1170ED	820Ω,1/16W	R4837	NRSA6AJ-0R0W	MG RESISTOR	0Ω,1/16W
R3741	NRSA6AJ-102W	MG RESISTOR,DVL1170ED	1kΩ,1/16W	R4839	NRSA6AJ-0R0W	MG RESISTOR	0Ω,1/16W
R3742	NRSA6AJ-104W	MG RESISTOR,DVL1170ED	100kΩ,1/16W	R4840	NRSA6AJ-0R0W	MG RESISTOR	0Ω,1/16W
R3743	NRSA6AJ-104W	MG RESISTOR,DVL1170ED	100kΩ,1/16W	R4843	NRSA6AJ-0R0W	MG RESISTOR	0Ω,1/16W
R3744	NRSA6AD-561W	MG RESISTOR,DVL1170ED	560Ω,1/16W	R4844	NRSA6AJ-151W	MG RESISTOR	150Ω,1/16W
R3745	NRSA6AD-152W	MG RESISTOR,DVL1170ED	1.5kΩ,1/16W	R4846	NRSA6AJ-0R0W	MG RESISTOR	0Ω,1/16W
R3746	NRSA6AJ-222W	MG RESISTOR,DVL1170ED	2.2kΩ,1/16W	R4849	NRSA6AJ-0R0W	MG RESISTOR	0Ω,1/16W
R3747	NRSA6AJ-102W	MG RESISTOR,DVL1170ED	1kΩ,1/16W	R4854	NRSA6AJ-0R0W	MG RESISTOR	0Ω,1/16W
R3748	NRSA6AJ-474W	MG RESISTOR,DVL1170ED	470kΩ,1/16W	R4856	NRSA63J-6R8X	MG RESISTOR	6.8Ω,1/16W
R3801	NRSA6AJ-101W	MG RESISTOR	100Ω,1/16W	R4857	NRSA63J-6R8X	MG RESISTOR	6.8Ω,1/16W
R3802	NRSA6AD-821W	MG RESISTOR	820Ω,1/16W	R4858	NRSA6AJ-333W	MG RESISTOR	33kΩ,1/16W
R3803	NRSA6AD-273W	MG RESISTOR	27kΩ,1/16W	R4859	NRSA6AJ-0R0W	MG RESISTOR	0Ω,1/16W
R3804	NRSA6AD-153W	MG RESISTOR	15kΩ,1/16W	R4860	NRSA6AJ-0R0W	MG RESISTOR	0Ω,1/16W
R3805	NRSA6AD-821W	MG RESISTOR	820Ω,1/16W	R4862	NRSA63J-6R8X	MG RESISTOR	6.8Ω,1/16W
R3808	NRSA6AJ-0R0W	MG RESISTOR	0Ω,1/16W	R4863	NRSA63J-6R8X	MG RESISTOR	6.8Ω,1/16W

# ▲ REF No.	PART No.	PART NAME, DESCRIPTION		# ▲ REF No.	PART No.	PART NAME, DESCRIPTION	
	R4864	NRSA6AJ-102W	MG RESISTOR		R6225	NRVA6AD-562W	CMF RESISTOR
	R4865	NRSA6AJ-102W	MG RESISTOR		R6226	NRVA6AD-223W	CMF RESISTOR
	R4866	NRSA6AJ-102W	MG RESISTOR		R6227	NRVA6AD-473W	CMF RESISTOR
	R4867	NRSA6AJ-102W	MG RESISTOR		R6228	NRVA6AD-473W	CMF RESISTOR
	R4868	NRSA6AJ-0R0W	MG RESISTOR		R6229	NRVA6AD-332W	CMF RESISTOR
	R4870	NRSA6AJ-271W	MG RESISTOR		R6230	NRSA6AJ-272W	MG RESISTOR
	R4871	NRSA6AJ-0R0W	MG RESISTOR		R6231	NRVA6AD-104W	CMF RESISTOR
	R4874	NRSA6AJ-0R0W	MG RESISTOR		R6232	NRVA6AD-473W	CMF RESISTOR
	R5001	NRSA6AJ-104W	MG RESISTOR		R6233	NRSA6AJ-822W	MG RESISTOR
	R5002	NRSA6AJ-100W	MG RESISTOR		R6234	NRSA6AJ-273W	MG RESISTOR
	R5003	NRSA6AJ-100W	MG RESISTOR		R6235	NRVA6AD-683W	CMF RESISTOR
	R5004	NRSA6AJ-100W	MG RESISTOR		R6236	NRVA6AD-473W	CMF RESISTOR
	R5005	NRSA6AJ-100W	MG RESISTOR		R6237	NRVA6AD-823W	CMF RESISTOR
	R5006	NRSA6AJ-100W	MG RESISTOR		R6238	NRVA6AD-104W	CMF RESISTOR
	R5009	NRSA6AJ-0R0W	MG RESISTOR		R6239	NRSA6AJ-103W	MG RESISTOR
	R5010	NRSA6AJ-100W	MG RESISTOR		R6240	NRSA6AJ-333W	MG RESISTOR
	R5017	NRSA6AJ-220W	MG RESISTOR		R6241	NRSA6AJ-102W	MG RESISTOR
	R5020	NRSA6AJ-100W	MG RESISTOR		R6242	NRSA6AJ-104W	MG RESISTOR
	R6001	NRSA6AJ-104W	MG RESISTOR		R6243	NRSA6AJ-823W	MG RESISTOR
	R6002	NRSA6AJ-104W	MG RESISTOR		R6244	NRSA6AJ-152W	MG RESISTOR
	R6003	NRSA6AJ-224W	MG RESISTOR		R6245	NRSA6AJ-562W	MG RESISTOR
	R6004	NRSA6AJ-183W	MG RESISTOR		R6246	NRSA6AJ-222W	MG RESISTOR
	R6005	NRSA6AJ-104W	MG RESISTOR		R6701	NRZ0058-R20X	MG RESISTOR
▲	R6009	NRSA63J-102X	MG RESISTOR		R6702	NRVA6AD-104W	CMF RESISTOR
	R6010	NRSA6AJ-473W	MG RESISTOR		R6703	NRVA6AD-123W	CMF RESISTOR
	R6011	NRSA6AJ-102W	MG RESISTOR		R6704	NRVA6AD-823W	CMF RESISTOR
	R6012	NRVA6AD-104W	CMF RESISTOR		R6705	NRVA6AD-333W	CMF RESISTOR
	R6013	NRVA6AD-683W	CMF RESISTOR		RA1008	NRZ0034-104W	NETWORK RESISTOR
	R6101	NRVA6AD-103W	CMF RESISTOR		RA1009	NRZ0034-104W	NETWORK RESISTOR
	R6102	NRVA6AD-751W	CMF RESISTOR		RA1010	NRZ0034-104W	NETWORK RESISTOR
	R6103	NRVA6AD-103W	CMF RESISTOR		RA1401	NRZ0034-473W	NETWORK RESISTOR
	R6106	NRSA6AJ-333W	MG RESISTOR		RA3001	NRZ0034-100W	NETWORK RESISTOR
	R6107	NRVA6AD-562W	CMF RESISTOR		RA3002	NRZ0034-100W	NETWORK RESISTOR
	R6108	NRSA6AJ-223W	MG RESISTOR		RA3003	NRZ0034-100W	NETWORK RESISTOR
	R6113	NRSA6AJ-472W	MG RESISTOR		RA3004	NRZ0034-103W	NETWORK RESISTOR
	R6114	NRSA6AJ-823W	MG RESISTOR		RA3005	NRZ0040-0R0X	NETWORK RESISTOR
	R6115	NRSA6AJ-823W	MG RESISTOR		RA4201	NRZ0034-100W	NETWORK RESISTOR
	R6116	NRVA6AD-153W	CMF RESISTOR		RA4202	NRZ0034-100W	NETWORK RESISTOR
	R6117	NRSA6AJ-0R0W	MG RESISTOR		RA4301	NRZ0034-181W	NETWORK RESISTOR
	R6118	NRSA6AJ-102W	MG RESISTOR		RA4302	NRZ0034-181W	NETWORK RESISTOR
	R6124	NRSA6AJ-102W	MG RESISTOR		RA4303	NRZ0034-181W	NETWORK RESISTOR
	R6201	NRVA6AD-223W	CMF RESISTOR		RA4304	NRZ0034-181W	NETWORK RESISTOR
	R6202	NRSA6AJ-474W	MG RESISTOR		RA4305	NRZ0034-100W	NETWORK RESISTOR
	R6203	NRVA6AD-103W	CMF RESISTOR		RA4306	NRZ0034-100W	NETWORK RESISTOR
	R6204	NRSA6AJ-473W	MG RESISTOR		RA4307	NRZ0034-100W	NETWORK RESISTOR
	R6205	NRSA6AJ-102W	MG RESISTOR		RA4308	NRZ0034-100W	NETWORK RESISTOR
	R6206	NRVA6AD-183W	CMF RESISTOR		C1003	NBE20JM-106X	T CAPACITOR
	R6207	NRVA6AD-123W	CMF RESISTOR		C1004	NCFA1AZ-104W	CAPACITOR
	R6208	NRVA6AD-123W	CMF RESISTOR		C1006	NDCA1HJ-130W	CAPACITOR
	R6209	NRVA6AD-153W	CMF RESISTOR		C1007	NCFA1HZ-103W	CAPACITOR
	R6210	NRVA6AD-183W	CMF RESISTOR		C1009	NCFA1HZ-103W	CAPACITOR
	R6212	NRVA6AD-472W	CMF RESISTOR		C1010	NCFA1HZ-103W	CAPACITOR
	R6213	NRSA6AJ-103W	MG RESISTOR		C1011	NCFA1HZ-103W	CAPACITOR
	R6214	NRSA6AJ-152W	MG RESISTOR		C1013	NCFA1HZ-103W	CAPACITOR
	R6215	NRSA6AJ-473W	MG RESISTOR		C1014	NCFA1HZ-103W	CAPACITOR
	R6217	NRSA6AJ-151W	MG RESISTOR		C1015	NCFA1HZ-103W	CAPACITOR
	R6218	NRSA6AJ-104W	MG RESISTOR		C1016	NCFA1HZ-103W	CAPACITOR
	R6219	NRVA6AD-243W	CMF RESISTOR		C1017	NCFA1HZ-103W	CAPACITOR
	R6220	NRVA6AD-302W	CMF RESISTOR		C1019	NCFA1HZ-103W	CAPACITOR
	R6221	NRVA6AD-104W	CMF RESISTOR		C1023	NCFA1AZ-104W	CAPACITOR
	R6222	NRVA6AD-103W	CMF RESISTOR		C1026	NCFA1AZ-104W	CAPACITOR
	R6223	NRVA6AD-123W	CMF RESISTOR		C1027	NCFA1HZ-103W	CAPACITOR
	R6224	NRVA6AD-473W	CMF RESISTOR		C1028	NCFA1HZ-103W	CAPACITOR

# △ REF No.	PART No.	PART NAME, DESCRIPTION		# △ REF No.	PART No.	PART NAME, DESCRIPTION	
C1029	NCFA1HZ-103W	CAPACITOR	0.01μF,50V	C2019	NCB31CK-104X	CAPACITOR	0.1μF,16V
C1030	NCFA1HZ-103W	CAPACITOR	0.01μF,50V	C2020	NCBA1AK-104W	CAPACITOR	0.1μF,10V
C1031	NCF31AZ-105X	CAPACITOR	1μF,10V	C2021	NCBA1AK-104W	CAPACITOR	0.1μF,10V
C1034	NCFA1HZ-103W	CAPACITOR	0.01μF,50V	C2024	NCB21CK-105X	CAPACITOR	1μF,16V
C1036	NCFA1HZ-103W	CAPACITOR	0.01μF,50V	C2025	NBE20JM-106X	T CAPACITOR	10μF,6.3V
C1037	NCFA1HZ-103W	CAPACITOR	0.01μF,50V	C2103	NCB21CK-105X	CAPACITOR	1μF,16V
C1038	NCFA1HZ-103W	CAPACITOR	0.01μF,50V	C2104	NCB21CK-105X	CAPACITOR	1μF,16V
C1039	NCFA1HZ-103W	CAPACITOR	0.01μF,50V	C2109	NCBA1HK-102W	CAPACITOR	0.001μF,50V
C1401	NDCA1HJ-150W	CAPACITOR	15pF,50V	C2110	NCBA1HK-102W	CAPACITOR	0.001μF,50V
C1402	NDCA1HJ-150W	CAPACITOR	15pF,50V	C2111	NCB31CK-104X	CAPACITOR	0.1μF,16V
C1403	NCBA1AK-104W	CAPACITOR	0.1μF,10V	C2112	NCB31CK-104X	CAPACITOR	0.1μF,16V
C1404	NCBA1AK-104W	CAPACITOR	0.1μF,10V	C2115	NCBA1CK-223W	CAPACITOR	0.022μF,16V
C1405	NCBA1AK-104W	CAPACITOR	0.1μF,10V	C2116	NCBA1CK-223W	CAPACITOR	0.022μF,16V
C1406	NCBA1AK-104W	CAPACITOR	0.1μF,10V	C2117	NCBA1CK-223W	CAPACITOR	0.022μF,16V
C1407	NCBA1AK-104W	CAPACITOR	0.1μF,10V	C2118	NCBA1CK-223W	CAPACITOR	0.022μF,16V
C1409	NCBA1CK-103W	CAPACITOR	0.01μF,16V	C2119	NCBA1CK-223W	CAPACITOR	0.022μF,16V
C1410	NCBA1CK-103W	CAPACITOR	0.01μF,16V	C2120	NCBA1CK-223W	CAPACITOR	0.022μF,16V
C1411	NCBA1CK-103W	CAPACITOR	0.01μF,16V	C2121	NCBA1EK-472W	CAPACITOR	0.0047μF,25V
C1412	NCBA1CK-223W	CAPACITOR	0.022μF,16V	C2122	NCBA1EK-472W	CAPACITOR	0.0047μF,25V
C1413	NCBA1CK-223W	CAPACITOR	0.022μF,16V	C2123	NCBA1EK-472W	CAPACITOR	0.0047μF,25V
C1414	NCBA1CK-223W	CAPACITOR	0.022μF,16V	C2124	NCBA1EK-472W	CAPACITOR	0.0047μF,25V
C1415	NCBA1CK-223W	CAPACITOR	0.022μF,16V	C2125	NCBA1CK-223W	CAPACITOR	0.022μF,16V
C1416	NCBA1AK-104W	CAPACITOR	0.1μF,10V	C2126	NCBA1CK-223W	CAPACITOR	0.022μF,16V
C1601	NCBA1CK-103W	CAPACITOR	0.01μF,16V	C2127	NCB31CK-104X	CAPACITOR	0.1μF,16V
C1602	NBE20JM-106X	T CAPACITOR	10μF,6.3V	C2128	NCB31CK-104X	CAPACITOR	0.1μF,16V
C1603	NBE20JM-106X	T CAPACITOR	10μF,6.3V	C2201	NCBA1CK-103W	CAPACITOR	0.01μF,16V
C1605	NCBA1AK-104W	CAPACITOR	0.1μF,10V	C2202	NCBA1CK-103W	CAPACITOR	0.01μF,16V
C1606	NCBA1HK-152W	CAPACITOR	0.0015μF,50V	C2504	NCB31CK-104X	CAPACITOR	0.1μF,16V
C1607	NCBA1AK-473W	CAPACITOR	0.047μF,10V	C2505	NCB31CK-104X	CAPACITOR	0.1μF,16V
C1614	NBE20JM-106X	T CAPACITOR	10μF,6.3V	C2506	NCBA1HK-222W	CAPACITOR	0.0022μF,50V
C1618	NCBA1HK-222W	CAPACITOR	0.0022μF,50V	C2507	NCBA1HK-222W	CAPACITOR	0.0022μF,50V
C1619	NCBA1HK-222W	CAPACITOR	0.0022μF,50V	C2508	NBE20JM-106X	T CAPACITOR	10μF,6.3V
C1620	NCBA1HK-222W	CAPACITOR	0.0022μF,50V	C2509	NBE20JM-475X	T CAPACITOR	4.7μF,6.3V
C1621	NCB30JK-105X	CAPACITOR	1μF,6.3V	C2510	NCB30JK-105X	CAPACITOR	1μF,6.3V
C1622	NCBA1CK-223W	CAPACITOR	0.022μF,16V	C2511	NCB30JK-105X	CAPACITOR	1μF,6.3V
C1623	NCBA1AK-473W	CAPACITOR	0.047μF,10V	C2512	NCB30JK-105X	CAPACITOR	1μF,6.3V
C1624	NCBA1CK-103W	CAPACITOR	0.01μF,16V	C2513	NCB30JK-105X	CAPACITOR	1μF,6.3V
C1625	NCBA1AK-473W	CAPACITOR	0.047μF,10V	C2514	NCB30JK-105X	CAPACITOR	1μF,6.3V
C1626	NCBA1HK-331W	CAPACITOR	330pF,50V	C2515	NCB30JK-105X	CAPACITOR	1μF,6.3V
C1627	NCBA1CK-822W	CAPACITOR	0.0082μF,16V	C2516	NCB31CK-104X	CAPACITOR	0.1μF,16V
C1628	NCB21CK-224X	CAPACITOR	0.22μF,16V	C2517	NCB31CK-104X	CAPACITOR	0.1μF,16V
C1632	NBE20JM-106X	T CAPACITOR	10μF,6.3V	C3001	NBE20JM-106X	T CAPACITOR	10μF,6.3V
C1633	NCB21CK-474X	CAPACITOR	0.47μF,16V	C3003	NCB30JK-105X	CAPACITOR	1μF,6.3V
C1641	NCB21CK-474X	CAPACITOR	0.47μF,16V	C3005	NBE20JM-106X	T CAPACITOR	10μF,6.3V
C2001	NBE20JM-106X	T CAPACITOR	10μF,6.3V	C3007	NCB10JK-106X	CAPACITOR	10μF,6.3V
C2002	NBE20JM-106X	T CAPACITOR	10μF,6.3V	C3008	NBE20JM-106X	T CAPACITOR	10μF,6.3V
C2004	NCB21CK-105X	CAPACITOR	1μF,16V	C3011	NCBA1AK-104W	CAPACITOR	0.1μF,10V
C2005	NCB21CK-105X	CAPACITOR	1μF,16V	C3012	NCBA1AK-104W	CAPACITOR	0.1μF,10V
C2006	NCBA1AK-104W	CAPACITOR,DVL1170ED	0.1μF,10V	C3013	NCBA1CK-103W	CAPACITOR	0.01μF,16V
	NCBA1HK-102W	CAPACITOR,DVL970ED	0.001μF,50V	C3014	NCBA1CK-103W	CAPACITOR	0.01μF,16V
C2007	NCBA1AK-104W	CAPACITOR,DVL1170ED	0.1μF,10V	C3015	NCBA1CK-103W	CAPACITOR	0.01μF,16V
	NCBA1HK-102W	CAPACITOR,DVL970ED	0.001μF,50V	C3016	NCBA1AK-104W	CAPACITOR	0.1μF,10V
C2008	NCB21CK-105X	CAPACITOR	1μF,16V	C3017	NCBA1AK-104W	CAPACITOR	0.1μF,10V
C2009	NCB21CK-105X	CAPACITOR	1μF,16V	C3020	NCBA1AK-104W	CAPACITOR	0.1μF,10V
C2010	NCB21CK-105X	CAPACITOR	1μF,16V	C3021	NCBA1AK-104W	CAPACITOR	0.1μF,10V
C2011	NBE20JM-106X	T CAPACITOR	10μF,6.3V	C3022	NCBA1AK-104W	CAPACITOR	0.1μF,10V
C2012	NBE20JM-106X	T CAPACITOR	10μF,6.3V	C3023	NDCA1HJ-330W	CAPACITOR	33pF,50V
C2013	NCBA1AK-104W	CAPACITOR	0.1μF,10V	C3024	NCBA1HK-102W	CAPACITOR	0.001μF,50V
C2014	NCBA1AK-104W	CAPACITOR	0.1μF,10V	C3025	NCBA1AK-104W	CAPACITOR	0.1μF,10V
C2015	NBE20JM-106X	T CAPACITOR	10μF,6.3V	C3026	NCB30JK-105X	CAPACITOR	1μF,6.3V
C2016	NCBA1CK-223W	CAPACITOR	0.022μF,16V	C3027	NCBA1EK-472W	CAPACITOR	0.0047μF,25V
C2017	NCBA1AK-333W	CAPACITOR	0.033μF,10V	C3028	NDCA1EJ-271W	CAPACITOR	270pF,25V
C2018	NCB31CK-104X	CAPACITOR	0.1μF,16V	C3029	NCBA1CK-103W	CAPACITOR	0.01μF,16V

# ▲ REF No.	PART No.	PART NAME, DESCRIPTION		# ▲ REF No.	PART No.	PART NAME, DESCRIPTION	
C3030	NCBA1AK-104W	CAPACITOR	0.1μF,10V	C3715	NCBA1CK-103W	CAPACITOR	0.01μF,16V
C3031	NCBA1AK-104W	CAPACITOR	0.1μF,10V	C3731	NCBA1CK-103W	CAPACITOR,DVL1170ED	0.01μF,16V
C3032	NCBA1HK-102W	CAPACITOR	0.001μF,50V	C3732	NCBA1HK-102W	CAPACITOR,DVL1170ED	0.001μF,50V
C3033	NDCA1HJ-120W	CAPACITOR	12pF,50V	C3733	NDCA1HJ-3R0W	CAPACITOR,DVL1170ED	3pF,50V
C3036	NDCA1HJ-8R0W	CAPACITOR	8pF,50V	C3734	NDCA1HJ-5R0W	CAPACITOR,DVL1170ED	5pF,50V
C3037	NDCA1HJ-8R0W	CAPACITOR	8pF,50V	C3735	NDCA1HJ-330W	CAPACITOR,DVL1170ED	33pF,50V
C3038	NCBA1AK-104W	CAPACITOR	0.1μF,10V	C3736	NCBA1HK-102W	CAPACITOR,DVL1170ED	0.001μF,50V
C3039	NCBA1AK-104W	CAPACITOR	0.1μF,10V	C3738	NCBA1CK-103W	CAPACITOR,DVL1170ED	0.01μF,16V
C3042	NCBA1CK-103W	CAPACITOR	0.01μF,16V	C3739	NCBA1CK-103W	CAPACITOR,DVL1170ED	0.01μF,16V
C3043	NCBA1CK-103W	CAPACITOR	0.01μF,16V	C3740	NCB30JK-105X	CAPACITOR,DVL1170ED	1μF,6.3V
C3044	NCBA1AK-104W	CAPACITOR	0.1μF,10V	C3741	NCB30JK-105X	CAPACITOR,DVL1170ED	1μF,6.3V
C3045	NCBA1AK-104W	CAPACITOR	0.1μF,10V	C3742	NCBA1AK-104W	CAPACITOR,DVL1170ED	0.1μF,10V
C3046	NCBA1CK-103W	CAPACITOR	0.01μF,16V	C3743	NDCA1HJ-3R0W	CAPACITOR,DVL1170ED	3pF,50V
C3048	NCB31CK-473X	CAPACITOR	0.047μF,16V	C3744	NDCA1HJ-5R0W	CAPACITOR,DVL1170ED	5pF,50V
C3049	NCBA1HK-222W	CAPACITOR	0.0022μF,50V	C3745	NDCA1HJ-330W	CAPACITOR,DVL1170ED	33pF,50V
C3050	NCBA1CK-103W	CAPACITOR	0.01μF,16V	C3746	NCB20JM-475X	CAPACITOR,DVL1170ED	4.7μF,6.3V
C3051	NCBA1HK-102W	CAPACITOR	0.001μF,50V	C3747	NCBA1CK-103W	CAPACITOR,DVL1170ED	0.01μF,16V
C3052	NCBA1AK-473W	CAPACITOR	0.047μF,10V	C3801	NCB21AK-105X	CAPACITOR	1μF,10V
C3054	NCB30JK-105X	CAPACITOR	1μF,6.3V	C3802	NCB21AK-105X	CAPACITOR	1μF,10V
C3055	NCBA1CK-103W	CAPACITOR	0.01μF,16V	C3803	NBE20JM-106X	T CAPACITOR	10μF,6.3V
C3059	NBE20GM-226X	T CAPACITOR	22μF,4.0V	C3804	NBE20GM-476X	T CAPACITOR	47μF,4.0V
C3060	NCBA1CK-103W	CAPACITOR	0.01μF,16V	C3805	NCBA1CK-103W	CAPACITOR	0.01μF,16V
C3061	NCBA1CK-103W	CAPACITOR	0.01μF,16V	C3806	NCBA1CK-103W	CAPACITOR	0.01μF,16V
C3064	NCBA1HK-102W	CAPACITOR	0.001μF,50V	C3807	NCBA1CK-103W	CAPACITOR	0.01μF,16V
C3501	NBE20JM-106X	T CAPACITOR	10μF,6.3V	C3808	NCBA1CK-103W	CAPACITOR	0.01μF,16V
C3502	NBE20JM-106X	T CAPACITOR	10μF,6.3V	C3809	NCB31CK-104X	CAPACITOR	0.1μF,16V
C3503	NBE20JM-106X	T CAPACITOR	10μF,6.3V	C3810	NCBA1CK-103W	CAPACITOR	0.01μF,16V
C3504	NCBA1AK-473W	CAPACITOR	0.047μF,10V	C3811	NCB31CK-104X	CAPACITOR	0.1μF,16V
C3505	NCBA1CK-223W	CAPACITOR	0.022μF,16V	C3812	NCBA1AK-104W	CAPACITOR	0.1μF,10V
C3506	NCB21AK-105X	CAPACITOR	1μF,10V	C3813	NCBA1AK-104W	CAPACITOR	0.1μF,10V
C3507	NCBA1CK-103W	CAPACITOR	0.01μF,16V	C3814	NCBA1CK-103W	CAPACITOR,DVL1170ED	0.01μF,16V
C3508	NCBA1CK-103W	CAPACITOR	0.01μF,16V	C3815	NCBA1AK-104W	CAPACITOR,DVL1170ED	0.1μF,10V
C3509	NCBA1CK-103W	CAPACITOR	0.01μF,16V	C3816	NCBA1AK-104W	CAPACITOR,DVL1170ED	0.1μF,10V
C3510	NCBA1AK-104W	CAPACITOR	0.1μF,10V	C3817	NCBA1AK-104W	CAPACITOR,DVL1170ED	0.1μF,10V
C3511	NCBA1CK-103W	CAPACITOR	0.01μF,16V	C3818	NCBA1AK-104W	CAPACITOR,DVL1170ED	0.1μF,10V
C3512	NCB31CK-104X	CAPACITOR	0.1μF,16V	C3819	NCBA1CK-103W	CAPACITOR	0.01μF,16V
C3513	NCBA1AK-104W	CAPACITOR	0.1μF,10V	C4201	NBE40JM-476X	T CAPACITOR	47μF,6.3V
C3514	NCBA1AK-473W	CAPACITOR	0.047μF,10V	C4202	NBE40JM-476X	T CAPACITOR	47μF,6.3V
C3515	NCBA1AK-473W	CAPACITOR	0.047μF,10V	C4203	NCBA1CK-103W	CAPACITOR	0.01μF,16V
C3516	NCBA1AK-473W	CAPACITOR	0.047μF,10V	C4204	NBE40GM-107X	T CAPACITOR	100μF,4.0V
C3517	NCBA1CK-103W	CAPACITOR	0.01μF,16V	C4205	NCBA1AK-104W	CAPACITOR	0.1μF,10V
C3518	NCBA1CK-103W	CAPACITOR	0.01μF,16V	C4206	NCBA1AK-104W	CAPACITOR	0.1μF,10V
C3519	NCBA1HK-102W	CAPACITOR	0.001μF,50V	C4207	NCBA1AK-104W	CAPACITOR	0.1μF,10V
C3520	NCBA1CK-103W	CAPACITOR	0.01μF,16V	C4208	NCBA1AK-104W	CAPACITOR	0.1μF,10V
C3521	NCBA1AK-104W	CAPACITOR	0.1μF,10V	C4209	NCBA1AK-104W	CAPACITOR	0.1μF,10V
C3522	NCB20JM-475X	CAPACITOR	4.7μF,6.3V	C4210	NCB30JK-105X	CAPACITOR	1μF,6.3V
C3523	NCBA1CK-103W	CAPACITOR	0.01μF,16V	C4211	NCB21CK-105X	CAPACITOR	1μF,16V
C3524	NCBA1CK-103W	CAPACITOR	0.01μF,16V	C4212	NCBA1CK-123W	CAPACITOR	0.012μF,16V
C3525	NCB20JM-475X	CAPACITOR	4.7μF,6.3V	C4213	NCBA1AK-104W	CAPACITOR	0.1μF,10V
C3526	NCBA1CK-103W	CAPACITOR	0.01μF,16V	C4214	NCBA1AK-104W	CAPACITOR	0.1μF,10V
C3527	NDCA1EJ-221W	CAPACITOR	220pF,25V	C4215	NCBA1AK-104W	CAPACITOR	0.1μF,10V
C3528	NCBA1CK-103W	CAPACITOR	0.01μF,16V	C4216	NCB30JK-105X	CAPACITOR	1μF,6.3V
C3701	NBE20JM-106X	T CAPACITOR	10μF,6.3V	C4217	NCB30JK-105X	CAPACITOR	1μF,6.3V
C3702	NDCA1HJ-560W	CAPACITOR	56pF,50V	C4218	NCBA1AK-104W	CAPACITOR	0.1μF,10V
C3703	NDCA1HJ-270W	CAPACITOR	27pF,50V	C4219	NCBA1AK-104W	CAPACITOR	0.1μF,10V
C3704	NDCA1HJ-680W	CAPACITOR	68pF,50V	C4220	NCB30JK-105X	CAPACITOR	1μF,6.3V
C3705	NDCA1HJ-270W	CAPACITOR	27pF,50V	C4301	NCB30JK-105X	CAPACITOR	1μF,6.3V
C3706	NCB30JK-105X	CAPACITOR	1μF,6.3V	C4302	NBE20JM-106X	T CAPACITOR	10μF,6.3V
C3707	NCBA1CK-103W	CAPACITOR	0.01μF,16V	C4303	NBE20JM-106X	T CAPACITOR	10μF,6.3V
C3708	NCBA1AK-104W	CAPACITOR	0.1μF,10V	C4304	NCBA1AK-104W	CAPACITOR	0.1μF,10V
C3709	NCBA1CK-103W	CAPACITOR	0.01μF,16V	C4305	NCB30JK-105X	CAPACITOR	1μF,6.3V
C3712	NEA70GM-337X	E CAPACITOR	330μF,4.0V	C4306	NBE20JM-106X	T CAPACITOR	10μF,6.3V
C3713	NEA70GM-337X	E CAPACITOR	330μF,4.0V	C4307	NBE20JM-106X	T CAPACITOR	10μF,6.3V

# △ REF No.	PART No.	PART NAME, DESCRIPTION		# △ REF No.	PART No.	PART NAME, DESCRIPTION	
C4308	NBE20JM-106X	T CAPACITOR	10μF,6.3V	C6108	NCB30JK-105X	CAPACITOR	1μF,6.3V
C4309	NCBA1AK-104W	CAPACITOR	0.1μF,10V	C6109	NCB30JK-105X	CAPACITOR	1μF,6.3V
C4310	NCBA1AK-104W	CAPACITOR	0.1μF,10V	C6110	NCBA1AK-104W	CAPACITOR	0.1μF,10V
C4311	NCBA1AK-104W	CAPACITOR	0.1μF,10V	C6111	NCBA1AK-104W	CAPACITOR	0.1μF,10V
C4312	NCBA1AK-104W	CAPACITOR	0.1μF,10V	C6112	NCBA1AK-333W	CAPACITOR	0.033μF,10V
C4313	NCBA1CK-103W	CAPACITOR	0.01μF,16V	C6113	NCBA1HK-561W	CAPACITOR	560pF,50V
C4315	NBE20JM-106X	T CAPACITOR	10μF,6.3V	C6114	NCBA1HK-272W	CAPACITOR	0.0027μF,50V
C4316	NCB30JK-105X	CAPACITOR	1μF,6.3V	C6115	NCBA1HK-561W	CAPACITOR	560pF,50V
C4317	NCBA1AK-104W	CAPACITOR	0.1μF,10V	C6116	NCBA1CK-103W	CAPACITOR	0.01μF,16V
C4318	NCBA1AK-104W	CAPACITOR	0.1μF,10V	C6117	NCBA1AK-104W	CAPACITOR	0.1μF,10V
C4803	NBE80JM-106X	T CAPACITOR	10μF,6.3V	C6118	NCBA1AK-104W	CAPACITOR	0.1μF,10V
C4804	NCFA1AZ-104W	CAPACITOR	0.1μF,10V	C6119	NDCA1HJ-101W	CAPACITOR	100pF,50V
C4806	NCFA1AZ-104W	CAPACITOR	0.1μF,10V	C6120	NCB30JK-105X	CAPACITOR	1μF,6.3V
C4808	NCB30JK-105X	CAPACITOR	1μF,6.3V	C6121	NCBA1AK-104W	CAPACITOR	0.1μF,10V
C4809	NCFA1AZ-104W	CAPACITOR	0.1μF,10V	C6122	NCBA1CK-223W	CAPACITOR	0.022μF,16V
C4810	NCBA1CK-103W	CAPACITOR	0.01μF,16V	C6123	NCBA1CK-103W	CAPACITOR	0.01μF,16V
C4811	NCBA1CK-103W	CAPACITOR	0.01μF,16V	C6124	NCBA1CK-103W	CAPACITOR	0.01μF,16V
C4812	NCFA1AZ-104W	CAPACITOR	0.1μF,10V	C6125	NCBA1CK-103W	CAPACITOR	0.01μF,16V
C4813	NCFA1AZ-104W	CAPACITOR	0.1μF,10V	C6126	NCBA1CK-103W	CAPACITOR	0.01μF,16V
C4814	NCFA1AZ-104W	CAPACITOR	0.1μF,10V	C6127	NCBA1HK-102W	CAPACITOR	0.001μF,50V
C4815	NCB31HK-152X	CAPACITOR	0.0015μF,50V	C6128	NCB21CK-105X	CAPACITOR	1μF,16V
C4819	NCF31CZ-104X	CAPACITOR	0.1μF,16V	C6129	NCBA1HK-561W	CAPACITOR	560pF,50V
C4851	NBE80JM-106X	T CAPACITOR	10μF,6.3V	C6130	NCBA1AK-104W	CAPACITOR	0.1μF,10V
C4852	NCFA1AZ-104W	CAPACITOR	0.1μF,10V	C6131	NCBA1AK-104W	CAPACITOR	0.1μF,10V
C4853	NBE21AM-335X	T CAPACITOR	3.3μF,10V	C6132	NCBA1AK-104W	CAPACITOR	0.1μF,10V
C4854	NBE21AM-106X	T CAPACITOR	10μF,10V	C6134	NCBA1AK-104W	CAPACITOR	0.1μF,10V
C4855	NCB31CK-104X	CAPACITOR	0.1μF,16V	C6201	NCB21CK-105X	CAPACITOR	1μF,16V
C4858	NDCA1HJ-680W	CAPACITOR	68pF,50V	C6202	NCB10JK-106X	CAPACITOR	10μF,6.3V
C4859	NCBA1CK-223W	CAPACITOR	0.022μF,16V	C6203	NCBA1HK-102W	CAPACITOR	0.001μF,50V
C4860	NCBA1CK-223W	CAPACITOR	0.022μF,16V	C6204	NCBA1HK-561W	CAPACITOR	560pF,50V
C4861	NCBA1HK-102W	CAPACITOR	0.001μF,50V	C6205	NCB30JK-105X	CAPACITOR	1μF,6.3V
C4862	NCBA1HK-102W	CAPACITOR	0.001μF,50V	C6206	NCB21CK-105X	CAPACITOR	1μF,16V
C4864	NBE80JM-106X	T CAPACITOR	10μF,6.3V	C6207	NCB10JK-106X	CAPACITOR	10μF,6.3V
C4865	NCFA1AZ-104W	CAPACITOR	0.1μF,10V	C6208	NCBA1EK-472W	CAPACITOR	0.0047μF,25V
C5001	NCB30JK-105X	CAPACITOR	1μF,6.3V	C6209	NCB21CK-105X	CAPACITOR	1μF,16V
C5002	NCBA1AK-104W	CAPACITOR	0.1μF,10V	C6210	NCB10JK-106X	CAPACITOR	10μF,6.3V
C5003	NBE20JM-106X	T CAPACITOR	10μF,6.3V	C6211	NCBA1HK-102W	CAPACITOR	0.001μF,50V
C5004	NCB30JK-105X	CAPACITOR	1μF,6.3V	C6212	NCB21CK-105X	CAPACITOR	1μF,16V
C5005	NCBA1AK-104W	CAPACITOR	0.1μF,10V	C6213	NCB30JK-105X	CAPACITOR	1μF,6.3V
C5006	NCBA1AK-104W	CAPACITOR	0.1μF,10V	C6214	NCB21CK-105X	CAPACITOR	1μF,16V
C5008	NBE40JM-476X	T CAPACITOR	47μF,6.3V	C6215	NCB21CK-105X	CAPACITOR	1μF,16V
C5009	NBE40JM-476X	T CAPACITOR	47μF,6.3V	C6216	NCBA1AK-683W	CAPACITOR	0.068μF,10V
C5011	NCBA1AK-104W	CAPACITOR	0.1μF,10V	C6217	NCB21CK-105X	CAPACITOR	1μF,16V
C5012	NCBA1AK-104W	CAPACITOR	0.1μF,10V	C6218	NCB21CK-105X	CAPACITOR	1μF,16V
C5013	NCBA1AK-104W	CAPACITOR	0.1μF,10V	C6219	NCB21CK-224X	CAPACITOR	0.22μF,16V
C5014	NCBA1AK-104W	CAPACITOR	0.1μF,10V	C6220	NCB21CK-105X	CAPACITOR	1μF,16V
C5017	NBE41AM-476X	T CAPACITOR	47μF,10V	C6221	NCB11EK-105X	CAPACITOR	1μF,25V
C5021	NBP41EM-475X	T CAPACITOR	4.7μF,25V	C6222	NCB11EK-105X	CAPACITOR	1μF,25V
C5023	NCBA1AK-104W	CAPACITOR	0.1μF,10V	C6224	NCBA1EK-472W	CAPACITOR	0.0047μF,25V
C5024	NCF31EZ-104X	CAPACITOR	0.1μF,25V	C6225	NCBA1CK-103W	CAPACITOR	0.01μF,16V
C5025	NBP21VM-105X	T CAPACITOR	1μF,35V	C6226	NCB21CK-105X	CAPACITOR	1μF,16V
C5026	NCBA1AK-104W	CAPACITOR	0.1μF,10V	C6227	NCB11EK-105X	CAPACITOR	1μF,25V
C5027	NCBA1AK-104W	CAPACITOR	0.1μF,10V	C6228	NCB11EK-105X	CAPACITOR	1μF,25V
C5028	NBE20JM-106X	T CAPACITOR	10μF,6.3V	C6230	NCB21CK-105X	CAPACITOR	1μF,16V
C6001	NCBA1CK-103W	CAPACITOR	0.01μF,16V	C6231	NCBA1CK-103W	CAPACITOR	0.01μF,16V
C6004	NCB30JK-105X	CAPACITOR	1μF,6.3V	C6701	NCB21CK-105X	CAPACITOR	1μF,16V
C6005	NDCA1HJ-101W	CAPACITOR	100pF,50V	C6703	NCB21CK-105X	CAPACITOR	1μF,16V
C6101	NCB21CK-105X	CAPACITOR	1μF,16V	L1002	NQL315K-100X	COIL	10μH
C6102	NEA71CM-106X	E CAPACITOR	10μF,16V	L1401	NQR0006-001X	FERRITE BEAD	
C6103	NCB21CK-105X	CAPACITOR	1μF,16V	L2001	NQL315K-100X	COIL	10μH
C6105	NCB21CK-105X	CAPACITOR	1μF,16V	L2002	NQL38DK-220X	COIL	22μH
C6106	NCB30JK-105X	CAPACITOR	1μF,6.3V	L2101	NQR0269-013X	FERRITE BEAD	
C6107	NCB30JK-105X	CAPACITOR	1μF,6.3V	L2102	NQR0269-013X	FERRITE BEAD	

# ▲ REF No.	PART No.	PART NAME, DESCRIPTION		# ▲ REF No.	PART No.	PART NAME, DESCRIPTION	
L2103	NQR0269-013X	FERRITE BEAD		CN105	QGB0801K2-30X	CONNECTOR	
L2501	NQL38DK-220X	COIL	22μH	CN106	QGA1201C2-07X	CONNECTOR	
L3001	NQR0129-002X	FERRITE BEAD		CN107	QGF0503C1-20X	FFC/FPC CONNECTOR	
L3002	NQR0129-002X	FERRITE BEAD		CN108	QGF0512C1-24X	FPC CONNECTOR	
L3004	NQR0006-001X	FERRITE BEAD		CN109	QGF0507F4-15X	FFC/FPC CONNECTOR	
L3005	NQR0006-001X	FERRITE BEAD		CN110	QGF0505F1-08X	FPC CONNECTOR	
L3006	NQR0006-001X	FERRITE BEAD		CN111	QGB0501L1-A0X	CONNECTOR	
L3007	NQL085J-2R2X	COIL	2.2μH	CN112	QGF0505F2-18X	FPC CONNECTOR	
L3008	NQL085J-120X	COIL	12μH	CN113	QGF0508F1-33X	FPC CONNECTOR	
L3014	NQL38DK-100X	COIL	10μH	▲ F6101	NMFZ007-2R0X-K	FUSE	T2.0A,50V
L3015	NQR0006-001X	FERRITE BEAD		OT1	LY43491-001A	SHEET(MAIN)	
L3501	NQR0129-002X	FERRITE BEAD		OT2	LY43549-001A	SHEET(MECHA)	
L3502	NQL402M-100X	COIL	10μH	OT3	LY30030-012A	SPACER(A)	
L3503	NQR0006-001X	FERRITE BEAD		OT4	LY43770-001A	SPACER(CAPSTAN)	
L3504	NQR0006-001X	FERRITE BEAD		OT5	LY43770-005A	SPACER(CAPSTAN)	
L3505	NQR0006-001X	FERRITE BEAD		SD1	LY32080-001A	SHIELD CASE	
L3701	NQL38DK-100X	COIL	10μH				
L3731	NQL085J-6R8X	COIL,DVL1170ED	6.8μH				
L3732	NQL085J-6R8X	COIL,DVL1170ED	6.8μH				
L3801	NQR0129-002X	FERRITE BEAD					
L3802	NQR0129-002X	FERRITE BEAD					
L3803	NQR0006-001X	FERRITE BEAD					
L3804	NQL38DK-100X	COIL	10μH				
L4201	NQL402M-100X	COIL	10μH				
L4301	NQR0129-002X	FERRITE BEAD					
L4302	NQR0129-002X	FERRITE BEAD					
L4303	NQR0129-002X	FERRITE BEAD					
L4304	NQR0129-002X	FERRITE BEAD					
L4305	NQR0129-002X	FERRITE BEAD					
L4802	NQL302N-100X	COIL	10μH				
L4851	NQR0129-002X	FERRITE BEAD					
L4852	NQL315K-100X	COIL	10μH				
L4853	NQL315K-100X	COIL	10μH				
L5001	NQR0129-002X	FERRITE BEAD					
L5002	NQL045K-100X	COIL	10μH				
L5003	NQL045K-100X	COIL	10μH				
L5004	NQL045K-100X	COIL	10μH				
L5005	NQR0129-002X	FERRITE BEAD					
L5006	NQL045K-100X	COIL	10μH				
L5007	NQR0129-002X	FERRITE BEAD					
L6101	NQLZ011-4R7X	COIL	4.7μH				
L6102	NQLZ011-4R7X	COIL	4.7μH				
L6201	NQL52EM-390X	COIL	39μH				
L6202	NQL52EM-390X	COIL	39μH				
L6203	NQL52EM-390X	COIL	39μH				
L6204	NQL144K-220X	COIL	22μH				
L6205	NQL64EM-220X	COIL	22μH				
L6206	NQLZ011-470X	COIL	47μH				
L6207	NQLZ011-470X	COIL	47μH				
L6208	NQLZ011-221X	COIL	220μH				
L6701	NQLZ010-100X	COIL	10μH				
X1001	NAX0474-001X	C OSCILLATOR					
X1002	NAX0325-001X	CRYSTAL RESONATOR					
X1401	NAX0204-001X	CRYSTAL RESONATOR					
X3002	NAX0206-001X	CRYSTAL RESONATOR,DVL970ED					
	NAX0480-001X	CRYSTAL RESONATOR,DVL1170ED					
X4301	NAX0356-001X	CXO					
WR1	WJT0065-001A	E-CARD WIRE,CN102-JACK CN502					
WR2	WJJ0268-001A	E-SI C WIRE C-C,CN104-REAR CN552					
CN101	QGF0508F1-40X	FPC CONNECTOR					
CN102	QGF0505F2-24X	FPC CONNECTOR					
CN103	QGF0503C1-12V	FFC/FPC CONNECTOR					
CN104	QGA1002C1-06X	CONNECTOR					