

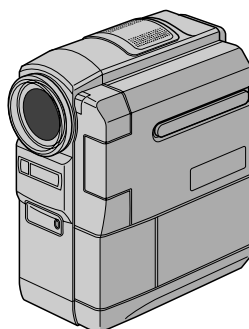
JVC

SCHEMATIC DIAGRAMS

DIGITAL VIDEO CAMERA

GR-DVX509SH

CD-ROM No.SML200207



Mini DV PAL

DSC
DIGITAL
STILL CAMERA

The camcorder illustrations appearing in this instruction manual are of the GR-DVX709.

Regarding service information other than these sections, refer to the GR-DVX509ED service manual (No. 86672). Also, be sure to note important safety precautions provided in the service manual.

SPECIFICATIONS *(The specifications shown pertain specifically to the model GR-DVX709ED, DVX509ED, DVX400ED, DVX709SH, DVX509SH)*

Camcorder

For General

Power supply	: DC 11.0 V (Using AC Adapter) DC 7.2 V (Using battery pack)
Power consumption	
LCD monitor off, viewfinder on	: Approx. 4.5 W (GR-DVX709)/Approx. 3.8 W (GR-DVX509/400)
LCD monitor on, viewfinder off	: Approx. 5.4 W (GR-DVX709)/Approx. 4.7 W (GR-DVX509/400)
Dimensions (W x H x D)	: 54 mm x 113.5 mm x 96 mm (with the LCD monitor closed and the viewfinder pushed back in)
Weight	: Approx. 490 g (GR-DVX709/509) (incl. grip belt) Approx. 480 g (GR-DVX400) (incl. grip belt)
Operating temperature	: 0°C to 40°C
Operating humidity	: 35% to 80%
Storage temperature	: -20°C to 50°C
Pickup	: 1/3.8" CCD (GR-DVX709) 1/4" CCD (GR-DVX509/400)
Lens	: F 1.8, f = 3.8 mm to 38 mm, 10:1 power zoom lens (GR-DVX709) F 1.8, f = 3.6 mm to 36 mm, 10:1 power zoom lens (GR-DVX509/400)
Filter diameter	: ø27 mm
LCD monitor	: 2.5" diagonally measured, LCD panel/TFT active matrix system
Viewfinder	: Electronic viewfinder with 0.44" colour LCD (GR-DVX709) Electronic viewfinder with 0.44" black/white LCD (GR-DVX509/400)
Speaker	: Monaural

For Digital Video Camera

Format	: DV format (SD mode)
Signal format	: PAL standard
Recording/Playback format	: Video : Digital component recording Audio : PCM digital recording, 32 kHz 4-channel (12-bit), 48 kHz 2-channel (16-bit)
Cassette	: Mini DV cassette
Tape speed	: SP: 18.8 mm/s LP: 12.5 mm/s
Maximum recording time (using 80 min. cassette)	: SP: 80 min. LP: 120 min.

For Digital Still Camera (GR-DVX709/509 only)

Storage media	: SD Memory Card/MultiMediaCard
Compression system	: Still image : JPEG (compatible) Moving image* : MPEG4 (compatible)
File size	
Still Image	: 3 modes (1280 x 960 pixels*/1024 x 768 pixels/640 x 480 pixels)
Moving Image*	: 1 mode (160 x 120 pixels)
Picture quality	: 2 modes (FINE/STANDARD)
Approximate number of storable images	: pg. 50

* GR-DVX709 only

For Connectors

AV

Video output	: 1 V (p-p), 75 Ω, analogue
Video input (GR-DVX709 only)	: 0.8 V (p-p) – 1.2 V (p-p), 75 Ω, analogue
Audio output	: 300 mV (rms), 1 kΩ, analogue, stereo
Audio input (GR-DVX709 only)	: 300 mV (rms), 50 kΩ, analogue, stereo

Headphone output (GR-DVX709 only)

: Stereo

S-VIDEO

Output

	: Y: 1 V (p-p), 75 Ω, analogue output
	C: 0.29 V (p-p), 75 Ω, analogue output

Input (GR-DVX709 only)

	: Y: 0.8 V (p-p) – 1.2 V (p-p), 75 Ω, analogue
	C: 0.2 V (p-p) – 0.4 V (p-p), 75 Ω, analogue

DV

Input/output

	: 4-pin, IEEE 1394 compliant
--	------------------------------

USB (GR-DVX709/509 only)

EDIT (GR-DVX709/509 only)

JLIP (GR-DVX400 only)

PC (GR-DVX400 only)

	: ø3.5 mm, 2-pole
	: ø3.5 mm, 4-pole
	: ø2.5 mm, 3-pole

AC Adapter

For General

Power requirement	: AC 110 V to 240 V ~, 50 Hz/60 Hz
Output	: DC 11.0 V , 1.0 A

Specifications shown are for SP mode unless otherwise indicated. E & O.E.
Design and specifications subject to change without notice.

4.1 MONITOR SCHEMATIC DIAGRAM

NOTE : The parts with marked (*) is not used.

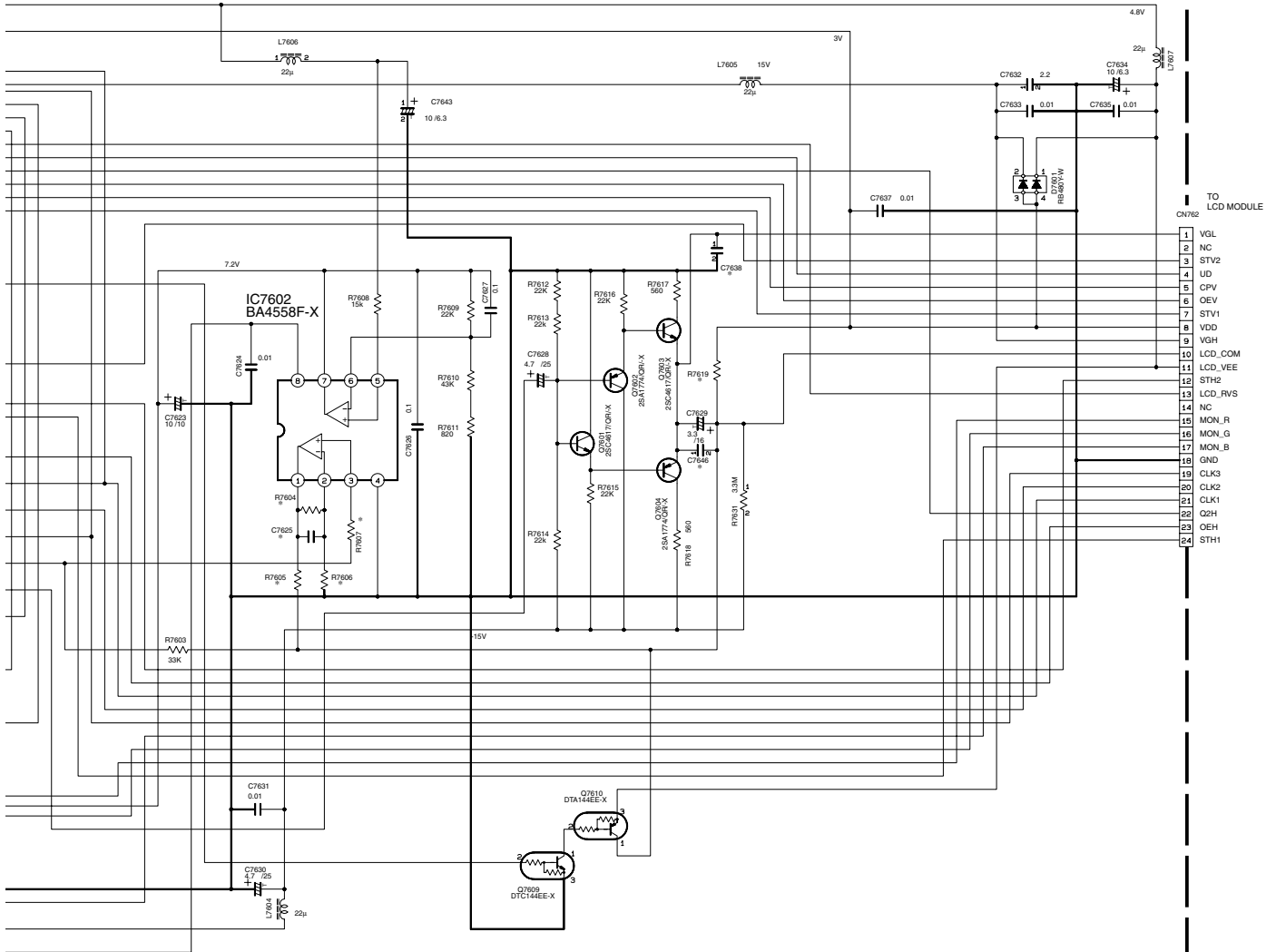
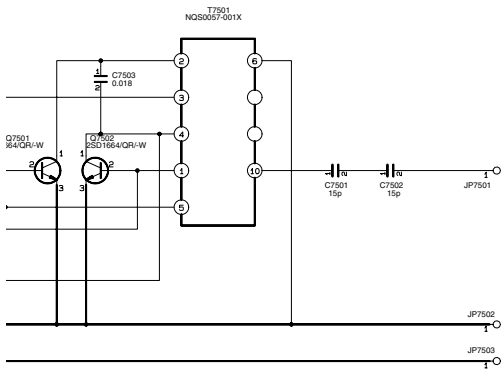
NOTES 1. How to find the page showing the continuative schematic diagram.

Example) TO SYSCON: Refer to the GR-DVX509ED service manual (NO. 86672).

TO SYSCON: Refer to this service manual.

2. The mark ★ means modified points.

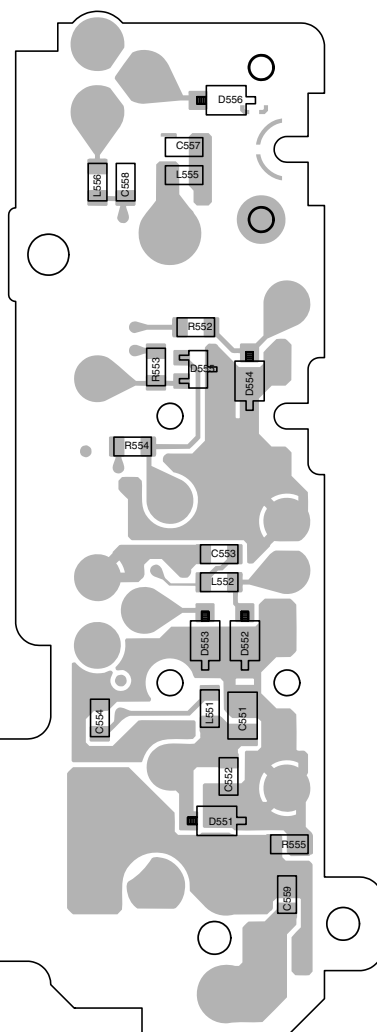
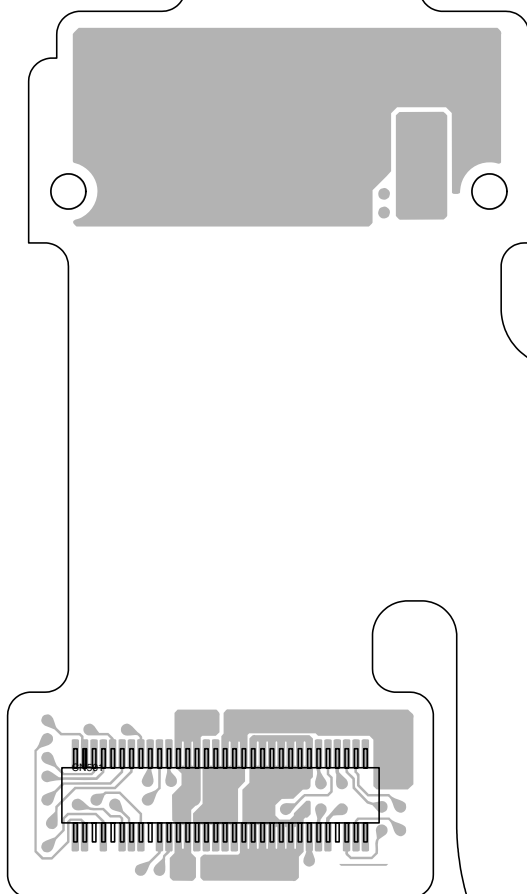
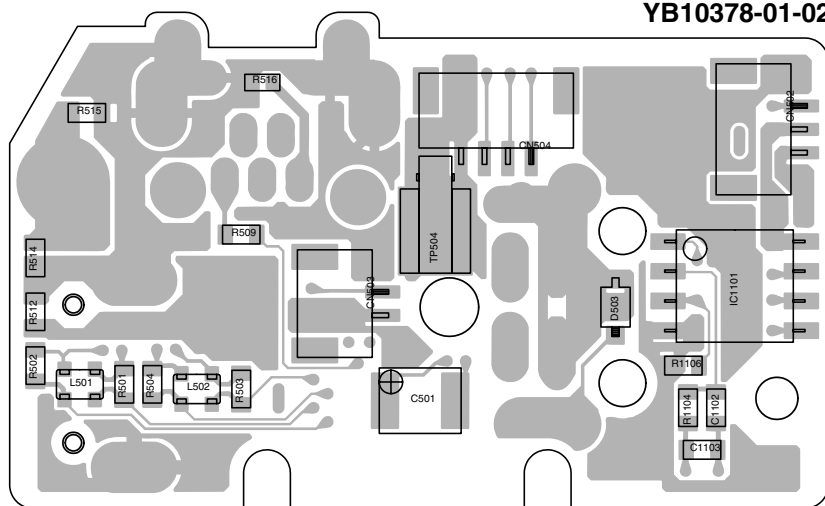
3. When ordering parts, be sure to order according to the Part Number indicated in the Parts List.



4.2 JACK CIRCUIT BOARD

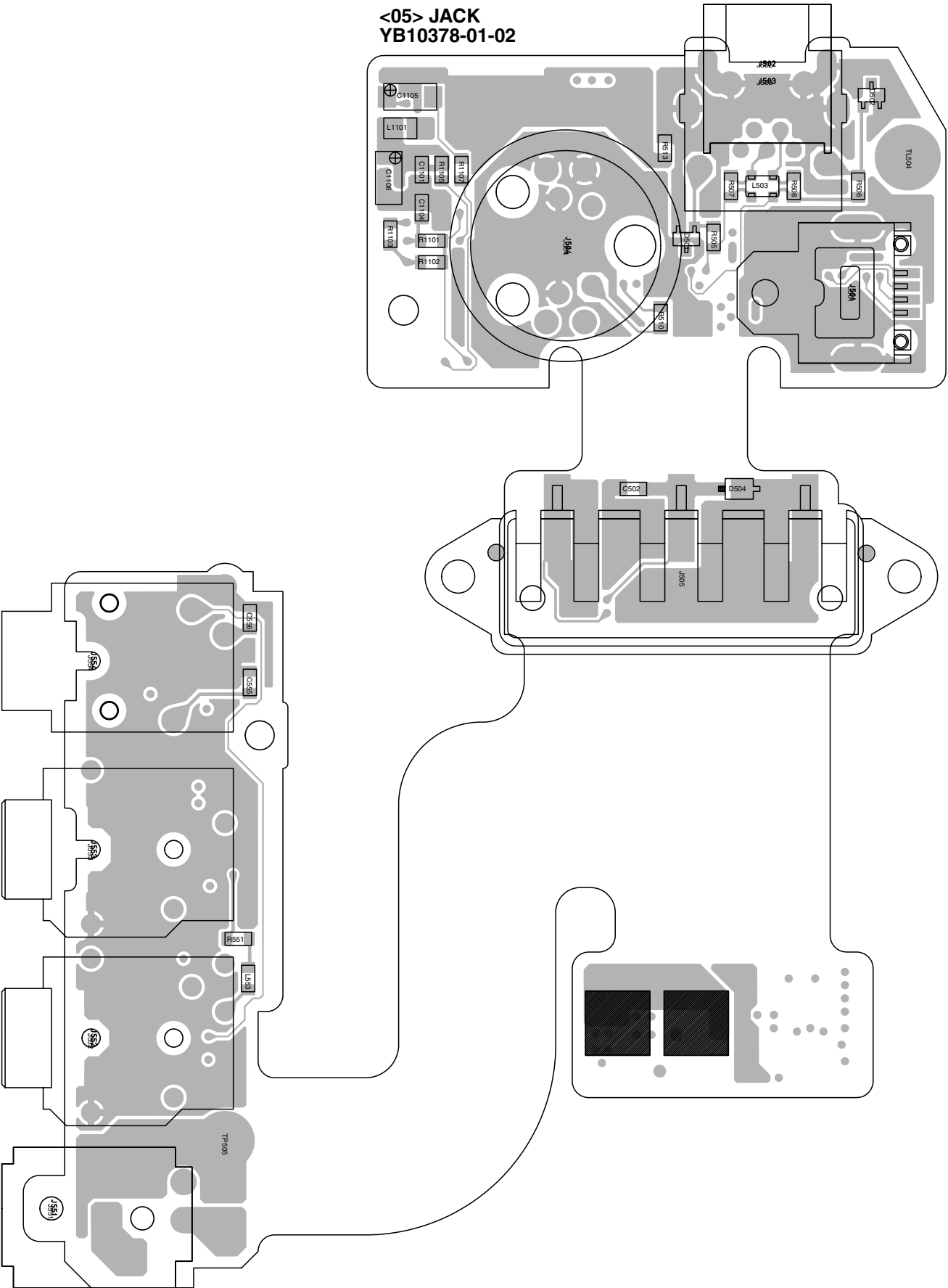
-FOIL SIDE (B)-

<05> JACK
YB10378-01-02



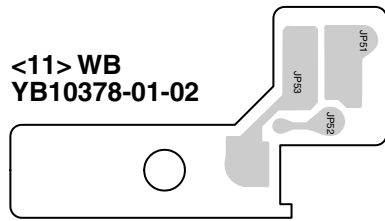
- COMPONENT SIDE (A) -

<05> JACK
YB10378-01-02

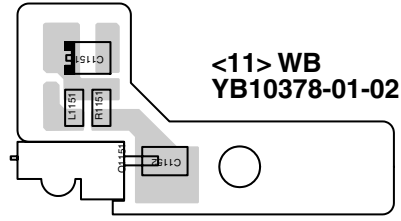


4.3 WB, MONI SW AND MENU CIRCUIT BOARDS

- FOIL SIDE (B) -

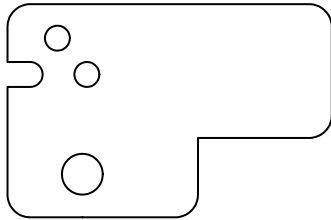


– COMPONENT SIDE (A) –



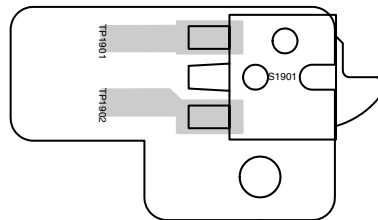
- FOIL SIDE (B) -

**<12> MONI SW
YB10378-01-02**



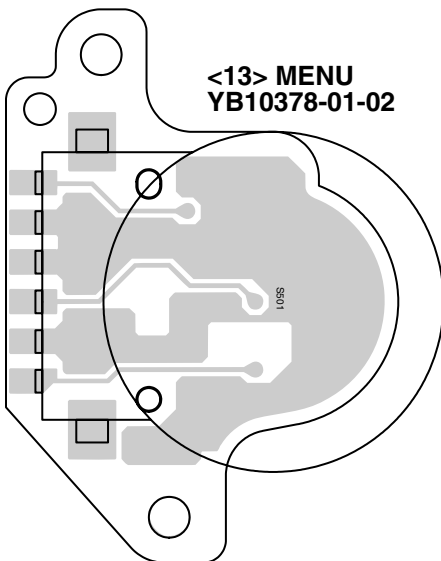
– COMPONENT SIDE (A) –

**<12> MONI SW
YB10378-01-02**



- FOIL SIDE (B) -

<13> MENU
YB10378-01-02



– COMPONENT SIDE (A) –

<13> MENU
YB10378-01-02

