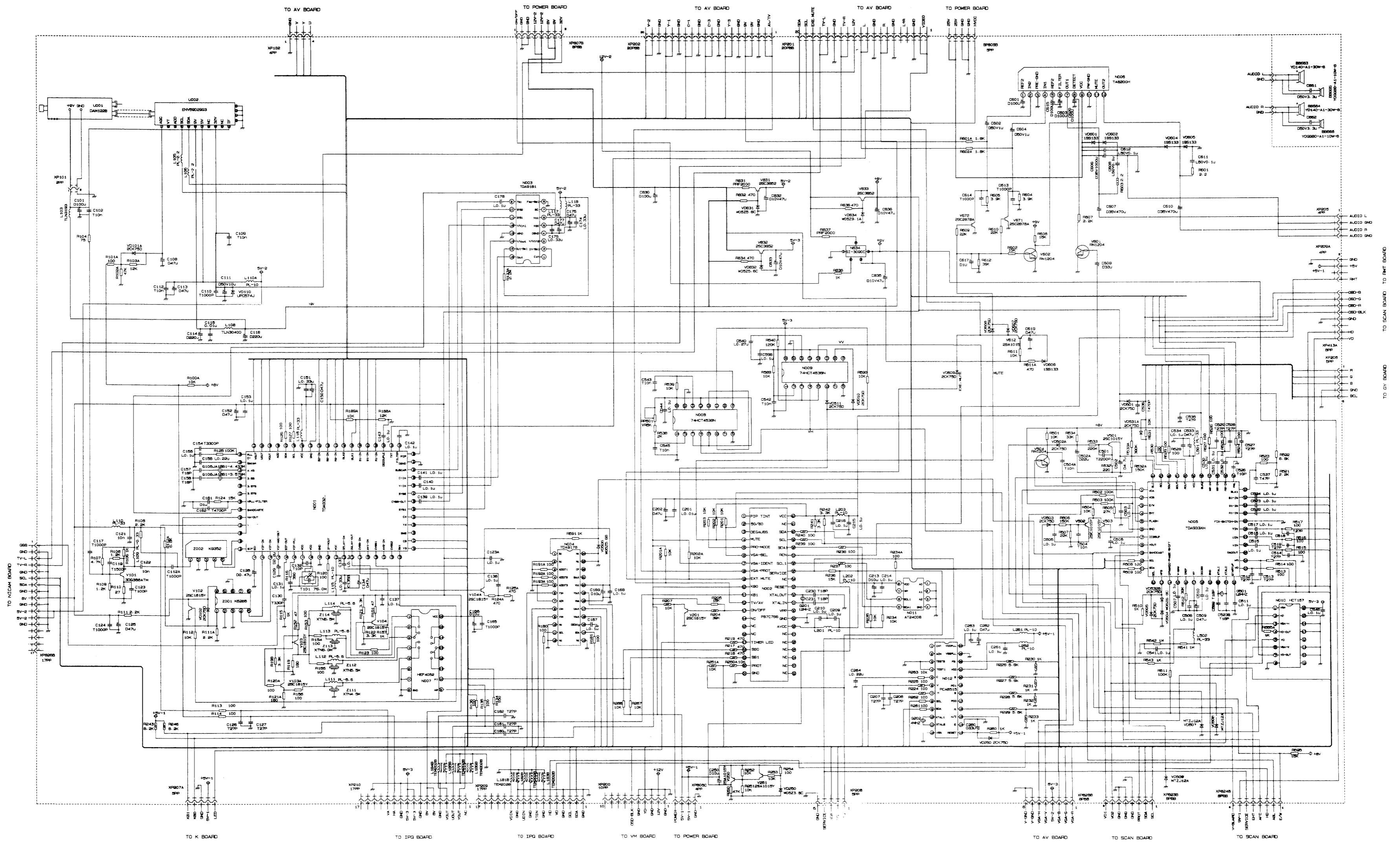


PRT51P2

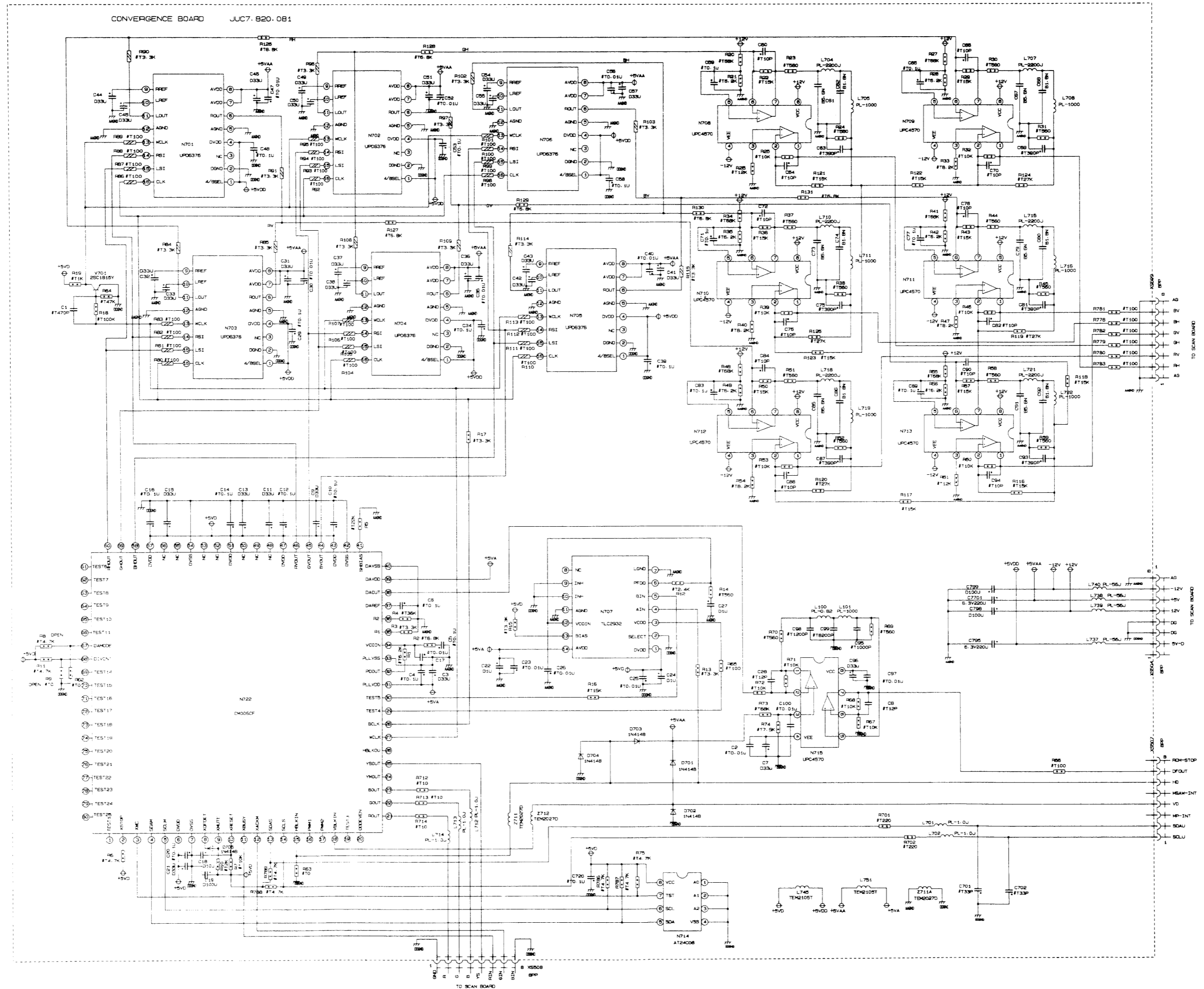
8.2 Schematic Diagram



The circuit diagram is only for reference. Specifications are subject to change without notice.

PRT51P2

Schematic Diagram

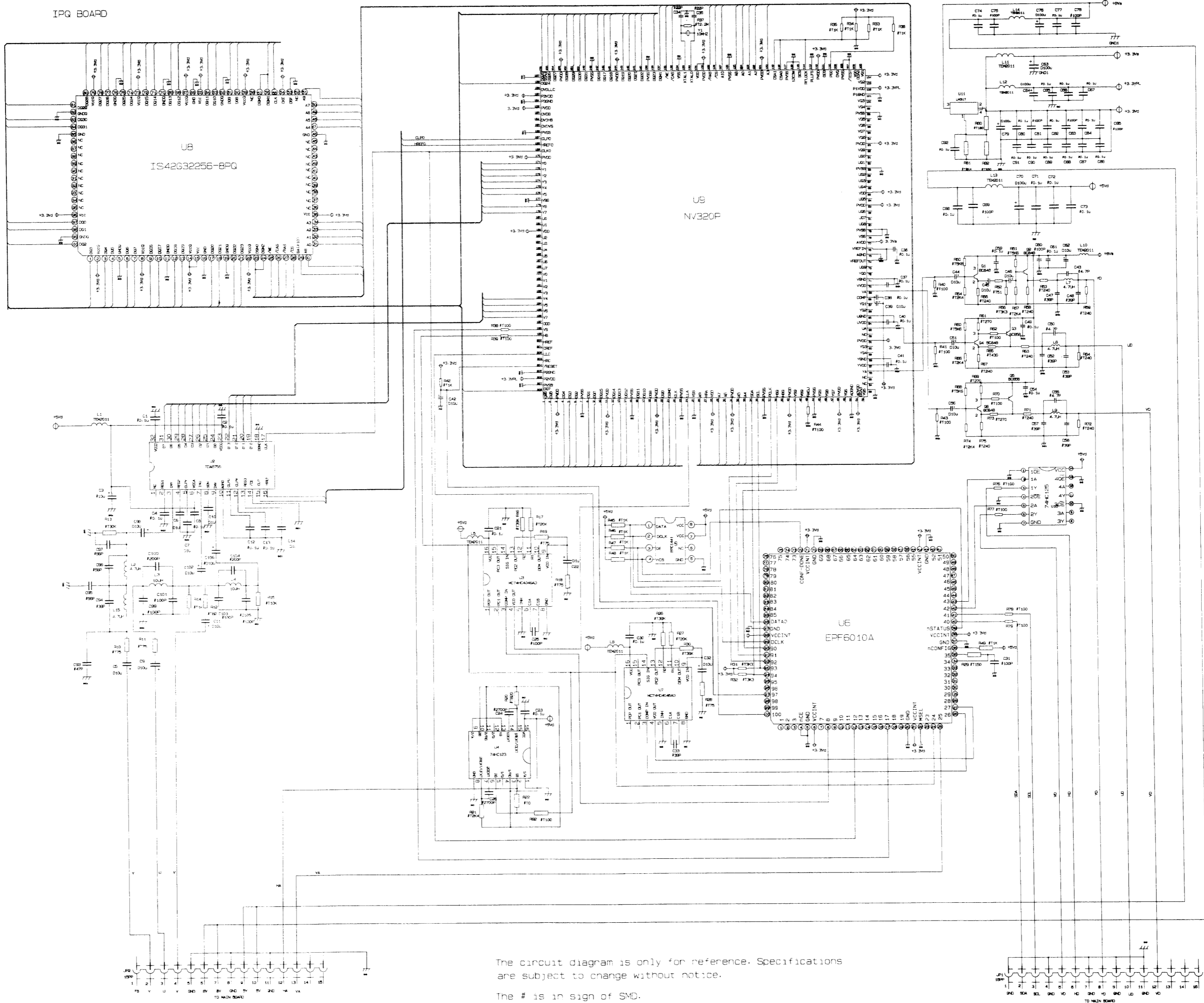


The circuit diagram is only for reference. Specifications are subject to change without notice.

The # is in sign of SMD.

PRT51P2

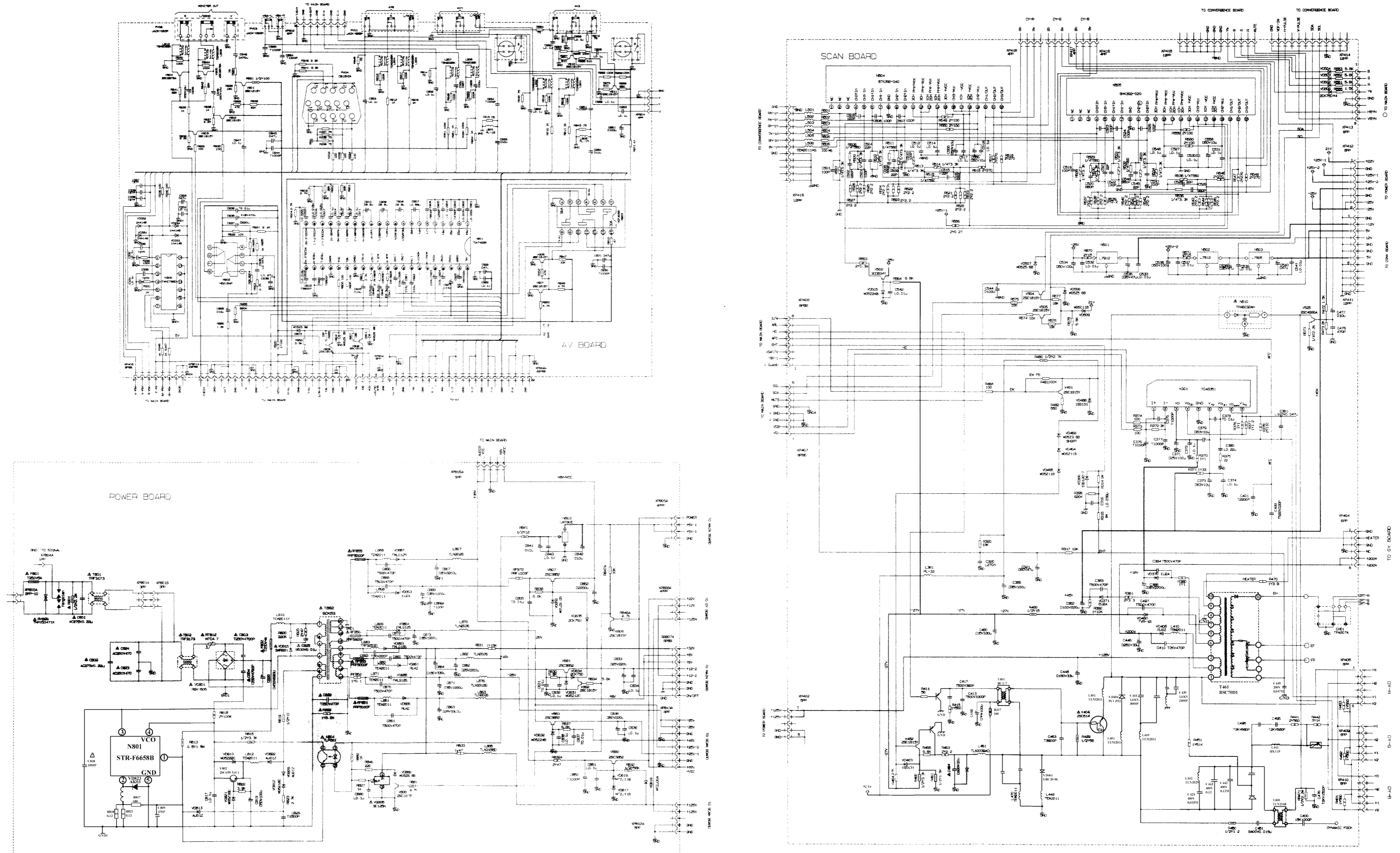
Schematic Diagram



The circuit diagram is only for reference. Specifications are subject to change without notice.
 The # is in sign of SMD.

PRT51P2

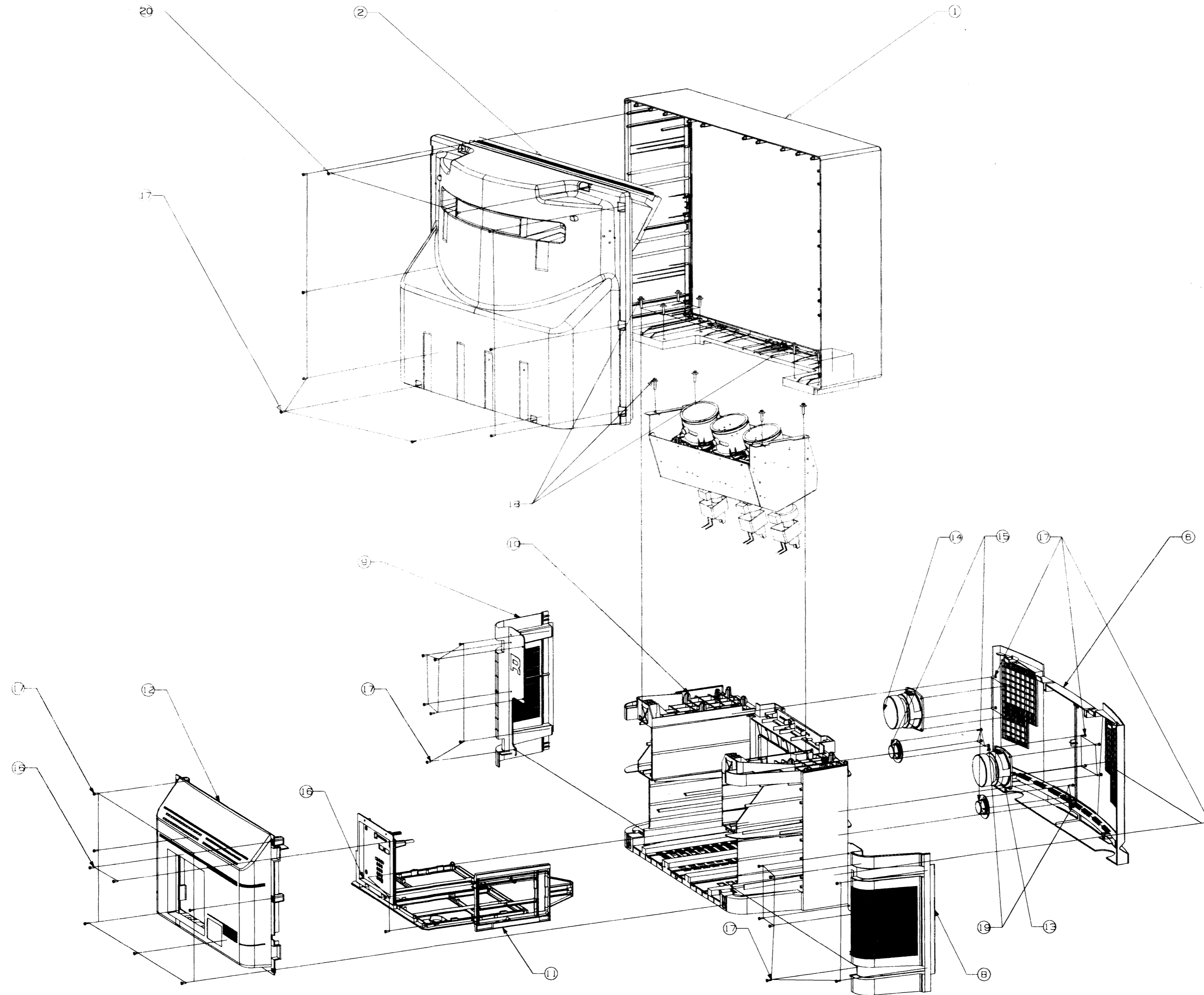
Schematic Diagram



The circuit diagram is only for reference. Specifications are subject to change without notice.

1 The component in shadow has special safety performance. 2 Cold ground is
 Replace it with the same specifications as the original's. Not ground.

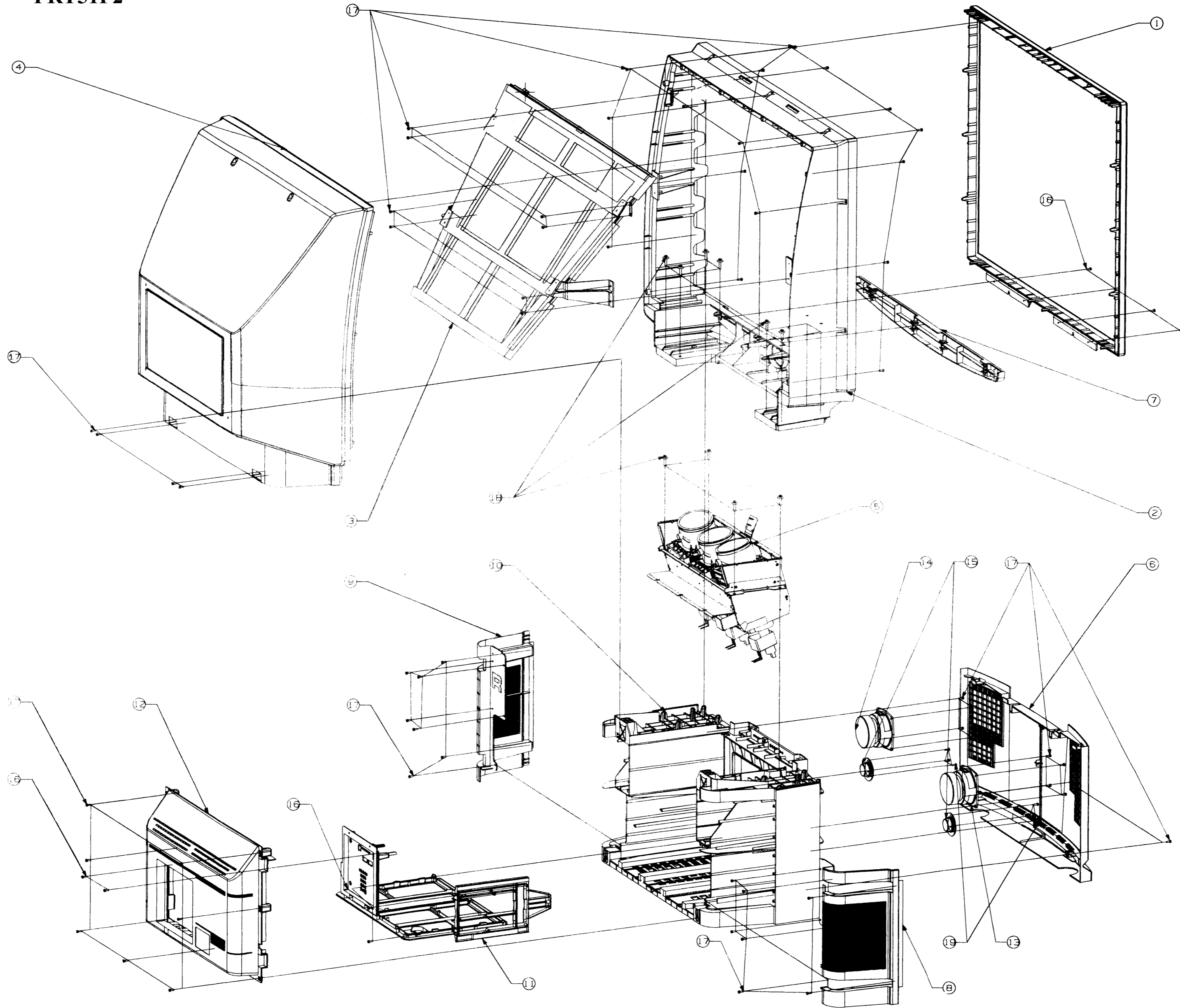
8.3 Exploded View



Final Assembly Drawing for 43"

No.	Code	Description	Quantities
1		Cover Assembly I	1
2		Rear Cabinet Assembly II	1
3			
4			
5		Projection Tube Assembly	1
6		Panel Assembly	1
7			
8		Cover Assembly for Audio (left)	1
9		Cover Assembly for Audio (right)	1
10		Bottom	1
11		Chassis Assembly	1
12		Rear Cover for Chassis	1
13		Speaker Assembly a	1
14		Speaker Assembly b	1
15		Speaker Assembly c	2
16		Tapping Screw4x16BBH0	10
17		Tapping Screw4x20BAH0	58
18		Combined ScrewM6x35W-F	12
19		Tapping Screw3x12VwAHCH	6
20			
21			
22			
23			
24			

PRT51P2



Final Assembly Drawing for 51"

No.	Code	Description	Quantities
1		Front Cabinet Assembly	1
2		Middle Cabinet	1
3		Surface Mirror Assembly	1
4		Screen Rear Cover	1
5		Projection Tube Assembly	1
6		Panel Assembly	1
7		Upper Cover Assembly	1
8		Cover Assembly for Audio (left)	1
9		Cover Assembly for Audio (right)	1
10		Bottom	1
11		Chassis Assembly	1
12		Rear Cover for Chassis	1
13		Speaker Assembly a	1
14		Speaker Assembly b	1
15		Speaker Assembly c	2
16	Japanese Standard	Tapping Screw 4x16BBH0	10
17	Japanese Standard	Tapping Screw 4x20BAH0	58
18		Combined Screw M6x35W-F	12
19		Tapping Screw 3 x 12VwAHCH	6
20			
21			
22			
23			
24			