

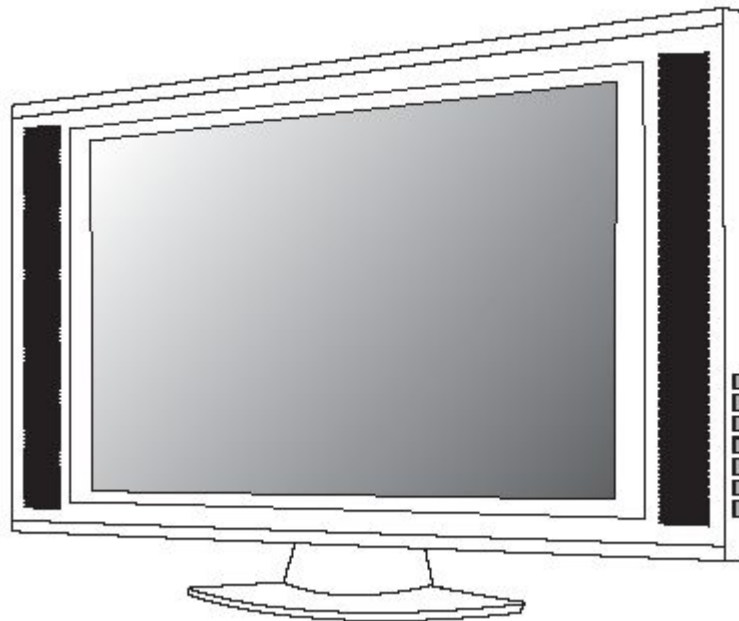
Rolsen

COLOR TFT-LCD TV SERVICE MANUAL

MODEL : RL-17S10

CAUTION !!

BEFORE SERVICING THE TFT-LCD TV,
READ THE SAFETY PRECAUTIONS IN THIS MANUAL.



CONTENTS

Contents	2
Safety Precautions	3
Servicing Precautions	4
Specifications	5
Control Descriptions	10
External In/Out Ports	13
Adjustment	14
Block Diagram	18
Schematic Diagram	19
Wave Form	20
Troubleshooting	25
Replacement Parts List	27
PCB Layout	34
Exploded View	39

SAFETY PRECAUTIONS

!! Important Safety Notice !!

Many electrical and mechanical parts in this chassis have special safety-related characteristics.

These parts are identified by in the Schematic Diagram and Replacement Parts List.

It is essential that these special safety parts should be replaced with the same components as recommended in this manual to prevent Shock, Fire, or other Hazards.

Do not modify the original design without permission of manufacturer.

Leakage Current Hot Check (See below Figure)

Plug the AC cord directly into the AC outlet.

Do not use a line Isolation Transformer during this check.

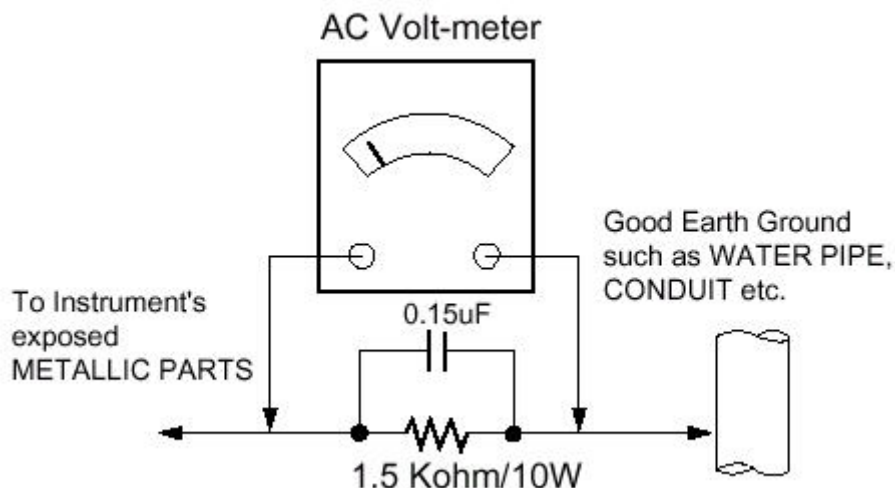
Connect 1.5K/10watt resistor in parallel with a 0.15uF capacitor between a known good earth ground (Water Pipe, Conduit, etc.) and the exposed metallic parts.

Measure the AC voltage across the resistor using AC voltmeter with 1000 ohms/volt or more sensitivity.

Reverse plug of the AC cord into the AC outlet and repeat AC voltage measurements for each exposed metallic part. Any voltage measured must not exceed 0.75 volt RMS, which is, corresponds to 0.5mA.

In case any measurement is out of the limits specified, there is possibility of shock hazard and the set must be checked and repaired before it is returned to the customer.

Leakage Current Hot Check circuit



SERVICING PRECAUTIONS

CAUTION!!

Before servicing receivers covered by this service manual, read and follow the SAFETY PRECAUTIONS on page 3 of this publication.

General Servicing Precautions

1. Always unplug the receiver AC power cord from AC power source before;
Removing or reinstalling any component, circuit board module or any other receiver assembly.

Disconnecting or reconnecting any receiver electrical plug or other electrical connection.

Connecting a test substitute in parallel with an electrolytic capacitor in the receiver.

CAUTION!! A wrong part substitution or incorrect polarity installation of electrolytic capacitors may result in an explosion hazard.

2. Do not spray chemicals on or near this receiver or any of its assemblies.

3. Do not defect any plug/socket voltage interlocks with which receivers covered by this service manual might be equipped.

4. Always connect the test receiver ground lead to the receiver chassis ground before connecting the test receiver positive lead. Always remove the test receiver ground lead last.

5. Do not connect the test fixture ground strap to power supply heatsink in this receiver

Electrostatically Sensitive(ES) Devices

Some semiconductor(solid state) devices can be damaged easily by static electricity. Such components commonly are called Electrostatically Sensitive(ES) Device. Examples

Circuit Board Foil Repair

Excessive heat applied to the copper foil of any printed circuit board will weaken the adhesive that bonds the foil to the circuit board causing the foil to separate from or "lift-off" the board.

The following guidelines and procedures should be followed whenever this condition is encountered.

At IC Connections

To repair a defective copper pattern at IC connections use the following procedure to install a jumper wire on the copper pattern side of the circuit board. (Use this technique only on IC connections.)

1. Carefully remove the damaged copper pattern with a sharp knife. (Remove only as much copper as absolutely necessary.)

2. Carefully scratch away the solder resist and acrylic coating (if used) from the end of the remaining copper pattern.

3. Bend a small "U" in one end of a small gauge jumper wire and carefully crimp it around the IC pin.

4. Route the jumper wire along the path of the out-away copper pattern and let it overlap the previously scraped end of the good copper pattern. Solder the overlapped area and clip off any excess jumper wire.

SPECIFICATIONS

Note: Specifications and others are subject to change without notice for improvement.

1. Scope.

This document is the specification of 17.1" TFT-LCD Color TV.

2. Power

1) Power requirement

DC 12V / 5.0A

2) AC / DC Adapter.

Input Frequency : 50/60Hz \pm 3Hz

Input Voltage : AC 110V AC 240V (\pm 10%)

Output Voltage : DC 12V

3) Power cord

Use UL listed and CSA certified detachable power cord type:SVT, 3-conductors, 18AWG for AC 120V area.

Use VDE listed detachable power cord type:H05VV-F, 3-conductors, 18AWG for AC220~240V area.

3. Tuning system

FS, 181 Channel

4. Sound output

1.5W+1.5Wrms Stereo (Max)

5. Antenna input impedance

VHF / UHF at 75ohm

6. OSD Type (On Screen Display)

Windows type (Center)

7. External in/output

Component, AV, Head Phone, PC, PC sound in

Audio In : 0.4Vrms, over 10K

Video In : 1Vp-p, over 75

8. Function

CATV/Hyper band

Auto Program

Manual Program

Auto Sleep

Quick view

ACMS(Auto channel Memory System)

PSM(Picture Status memory)

SSM(Sound Status memory)

ARC(Aspect Ratio Control)

SPECIFICATIONS

9. Receiving RF TV system

NO	Model System	RL-17S10	/	/
1	PAL-B		/	/
2	PAL-G		/	/
3	PAL-I, I /I		/	/
4	PAL-D		/	/
5	PAL-K		/	/
6	SECAM-B		/	/
7	SECAM-G		/	/
8	SECAM-D		/	/
9	SECAM-K		/	/
10	SECAM-K1		/	/
11	SECAM-I (6.0)		/	/
12	NTSC-3.58 / 4.5		/	/
13	NTSC-3.58 / 5.5		/	/
14	NTSC-3.58 / 6.0		/	/
15	NTSC-3.58 / 6.5		/	/
16	NTSC-3.58 / 4.5(5.0)		/	/
17	NTSC-4.43 / 5.5		/	/
18	NTSC-4.43 / 6.0		/	/
19	NTSC-4.43 / 6.5		/	/
20	PAL 5.5 / 60Hz		/	/
21	PAL 6.0 / 60Hz		/	/
22	PAL 6.5 / 60Hz		/	/
23	SECAM 5.5 / 60Hz		/	/
24	SECAM 6.0 / 60Hz		/	/
25	SECAM 6.5 / 60Hz		/	/
26	SECAM L / L'	X	/	/
	TOTAL SYSTEM	25	/	/

SPECIFICATIONS

10. Receiving function & channel

NO	Receiving System	Function	Receiving Channel
1	PAL-B	Reception of broadcast and play-back for Video Tape Recorder	VHF Band NTSC-M (US) : 2-13 NTSC-M (JAPAN) : 1-12 UHF Band NTSC-M (US) : 14-78 NTSC-M (JAPAN) : 13-62
2	PAL-G		
3	PAL- I, I / I		
4	PAL-D		
5	PAL-K		
6	SECAM-B		
7	SECAM-G		
8	SECAM-D		
9	SECAM-K		
10	SECAM-K1		
11	NTSC-M		
12	SECAM-L / L'	Play-back for special Video Tape Recorder	NTSC 3.58/4.5MHz/60Hz only
13	NTSC-4.43 / 5.5		
14	NTSC-4.43 / 6.0		
15	NTSC-4.43 / 6.5		
16	SECAM-I (6.0MHz)		
17	SECAM-L (VIDEO IN)		
18	NTSC 3.58 / 4.5MHz / 50Hz	Play-back for special Video Tape/Video disk player	NTSC 3.58/4.5MHz/60Hz only
19	PAL 5.5MHz / 60Hz		
20	PAL 6.0MHz / 60Hz		
21	PAL 6.5MHz / 60Hz		
22	SECAM 5.5MHz/60Hz		
23	SECAM 6.0MHz/60Hz		
24	SECAM 6.5MHz/60Hz		
25	NTSC-3.58 / 5.5MHz	Play-back for special Video Tape Recorder	
26	NTSC-3.58 / 6.0MHz		
27	NTSC-3.58 / 6.5MHz		

SPECIFICATIONS

11. PC/DTV Mode Scan Frequency & Timing

1) Scan Freq : H: 31 68.7 KHz / V : 56 85Hz

2) Preset Timing Chart

Mode	Resolution	H-Freq(Khz)	V-Freq(Khz)
VGA	640x480	31.5KHz	60Hz
	640x480	37.9KHz	72Hz
	640x480	37.5KHz	75Hz
	640x480	43.3KHz	85Hz
	720x400	31.5KHz	70Hz
SVGA	800x600	35.1KHz	56Hz
	800x600	37.9KHz	60Hz
	800x600	48.1KHz	72Hz
	800x600	46.9KHz	75Hz
	800x600	53.7KHz	85Hz
XGA	1024x768	48.4KHz	60Hz
	1024x768	56.5KHz	70Hz
	1024x768	60.2KHz	75Hz
	1024x768	68.7KHz	85Hz
DTV	1920x1080i	33.8KHz	60Hz
	1280x720i	45KHz	60Hz
	720x480p	31.5KHz	60Hz

Note!! :

If the set is cold, there may be a small "flicker" when the set is switched on. This is Normal, there is nothing wrong with the set.

If possible, use the VESA 1024x768 PC video mode to obtain the best image quality for your LCD TV.

Some dot defects may appear on the screen, like Red, Green or Blue spot. however, this will have no impact or effect on the monitor performance.

SPECIFICATIONS

12. TFT – LCD Panel Character

1) Feature

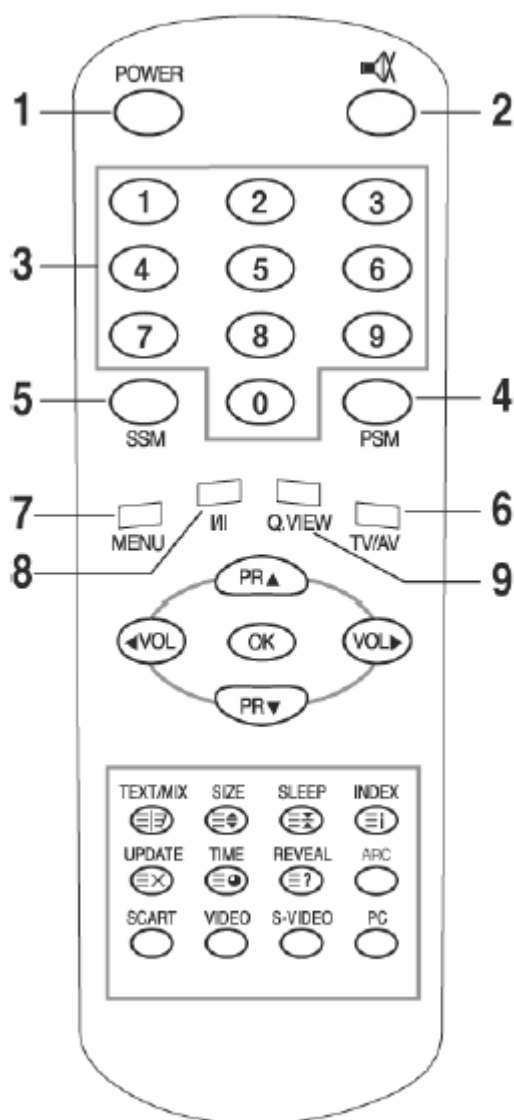
Size	: 17.1" Diagonal (43Cm)
LCD Type	: Color Active Matrix TFT
Pixel Pitch	: 0.291mm x 0.291mm
Pixel Format	: 1280x768 Pixels, RGB Stripe
Active Video Area	: 372.48mm(H) x 223.488mm(V)
Surface treatment	: Anti-Glare, Hard coating(3H)
Response Time(Typ)	:25ms(Typ)
Viewing Angle<CR≥10>	: Hor [Left/Right] → 88Deg (Typ) / 88Deg (Typ), Ver [High(Top)/Low(Bottom)] → 88Deg (Typ) / 88Deg (Typ)
Luminance(Typ)	: 450 cd/m ² (Typ)
Contrast Ratio(Typ)	: 400(Typ)
Display Color	: 16,777,216 Color
Back Light	: 6 CCFL

CONTROL DESCRIPTIONS

All the function can be controlled with the remote controller.
Some functions can also adjusted with the buttons on the controls on the TV front panel.

Remote controller

Note !! : Before you use the remote controller, please install the batteries.



1. POWER

Turns the TV on from standby or off to standby mode.

2. MUTE

Turns the sound on and off

3. NUMBER buttons

Selects programme numbers.

4. PSM (Picture Status Memory)

Recalls your preferred picture setting.

5. SSM (Sound Status Memory)

Recalls your preferred sound setting.

6. TV / AV

Selects TV, COMPONENT, VIDEO, S-VIDEO or PC mode.

Clears the menu from the screen.

7. MENU

Displays a main menu.

8. I / II

Selects the language during dual language broadcast.

Selects the sound output.

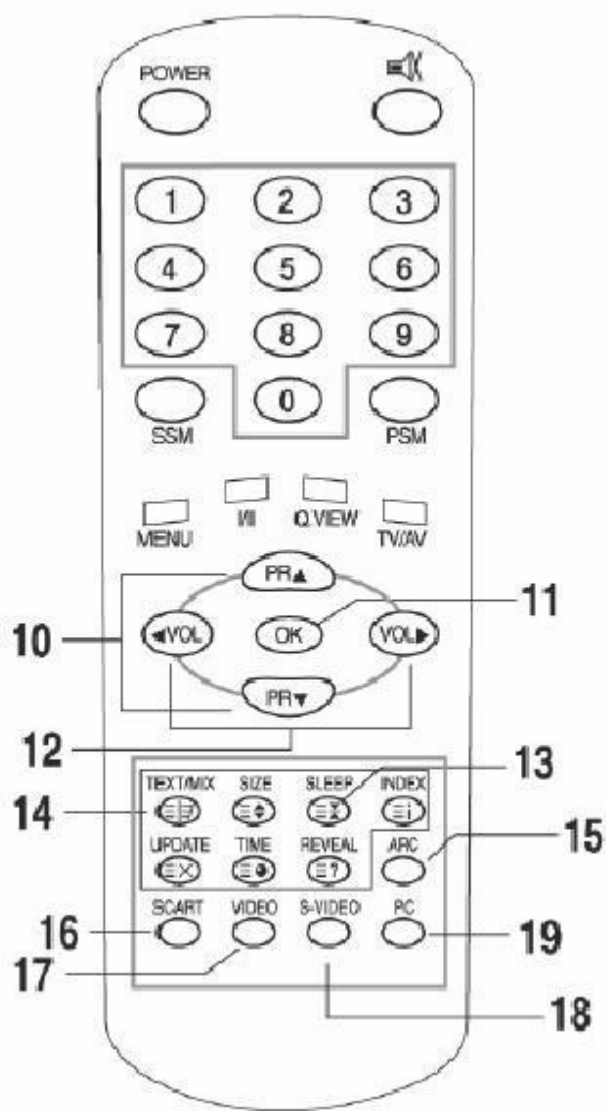
9. Q.VIEW

Returns to the previously viewed channel.

CONTROL DESCRIPTIONS

Remote controller

Note !! : Before you use the remote controller, please install the batteries.



10. PR (Programme Up/Down)

Selects next programme or a menu item.

11. OK

Accepts your selection or displays the current mode.

12. VOL (Volumn Up/Down)

Adjusts the sound level or a menu Setting.

13. SLEEP

Sets the sleep timer.

Note: In Teletext mode, the Sleep button is used for Teletext function.

14. Teletext buttons

These buttons are used for Teletext. For further details, see the 'Teletext' section.

15. ARC (Aspect Ratio Control)

Selects a screen mode 16:9 or 4:3.

16. SCART

Selects the SCART mode.

17. VIDEO

Selects the VIDEO mode.

18. S-VIDEO

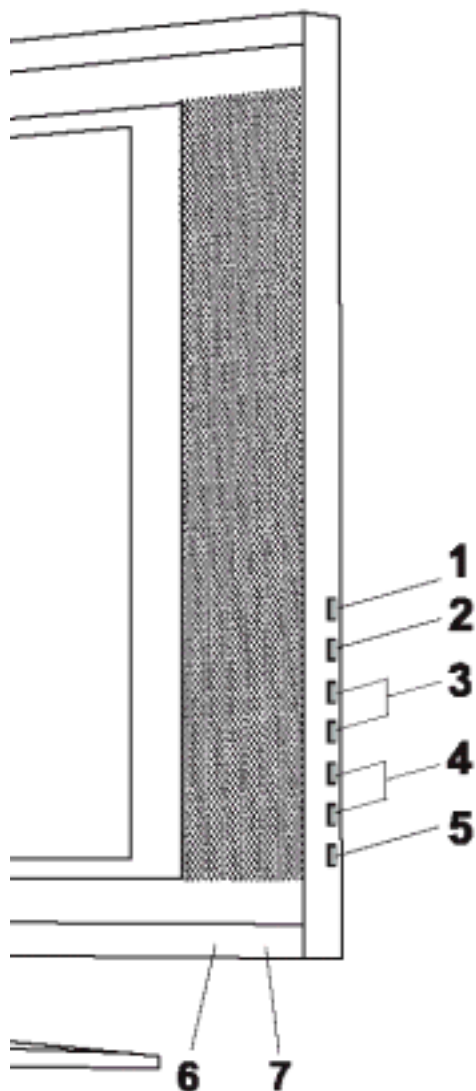
Selects the S-VIDEO mode.

19. PC

Selects the PC mode.

CONTROL DESCRIPTIONS

Controller of Panel



<SIDE VIEW>

1. ON/OFF

Switches TV set on or off.

2. MENU

Display a menu.

3. + PR - (Programme Up/Down)

Selects a programme or a menu item.

4. + VOL - (Volume Up/Down)

Adjusts the sound level or a menu Setting

5. TV/AV

Selects input signal source.

Clears the menu from the screen.

6. POWER STAND-BY INDICATOR

Illuminates red when the TV is in power stand-by mode.

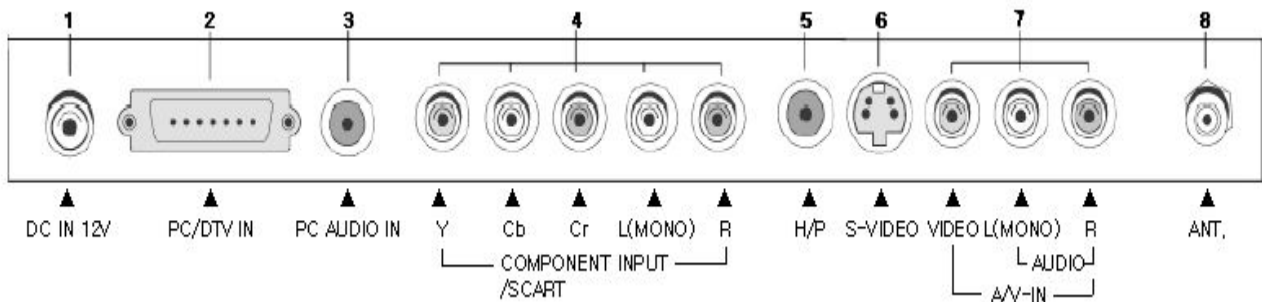
Illuminates green when the TV is switched power on mode.

7. REMOTE CONTROL SENSOR:

Accepts the IR signal of remote controller.

EXTERNAL IN/OUT PORTS

External IN / OUT



1. DC 12V Adapter INPUT

2. PC/DTV INPUT

3. PC Audio IN

Connect the audio cable from the PC to the **PC Audio IN** of the set.

4. COMPONENT IN (Y, Cb, Cr, L, R)

Connector the RCA cable from the DVD or VCR to the **COMPONENT IN** of the set.

5. H/P

Connect a headphone to this socket.

6. S-VIDEO

Connect the output of an S-VIDEO VCR to the S-VIDEO input.

Connect the audio outputs of an S-VIDEO VCR to the AV-IN audio inputs.

7. A/V IN inputs

Connect the Audio/Video outputs of external equipment to these inputs.

8. ANT(Antenna input)

Connect the RF cable from the ANT Port of home or office to the **ANT.** of the set.

ADJUSTMENT

1. Safety Precautions

1. Never disconnect leads while the TV receiver is on.
2. Don't short any portion of circuits while power is on.
3. The adjustment must be done by the correct appliances. But this is changeable in view of productivity.
4. Unless otherwise noted, set the line voltage to 230Vac 10%, 50Hz ./ 110Vac, 60Hz

2. Test Equipment required

1. RF signal generator (with pattern generator)
2. Multi meter (volt meter)
3. Oscilloscope
4. LCD Color analyzer

3. RF AGC (Automatic Gain Control) Adjustment

**Note!! Adjust a RF AGC of world standard tuner only.
2 in 1 tuner need not AGC adjust.**

The RF AGC was aligned at the time of manufacture for optimum performance over a wide range conditions. Readjustment of RF AGC should not be necessary unless unusual local conditions exist, such as ;

- 1) Channel interference in a CATV system.
- 2) Picture bending and/or color beats, which are unusually due to excessive RF signal input when the receiver is too close to a transmitting tower or when the receiver is connected to an antenna distribution system where the RF signal has been amplified. In this case, the input signal should be attenuated (with pad or filter) to a satisfactory level.
- 3) Picture noise caused by "broadcast noise" or weak signal. If the broadcast is "clean" and the RF signal is at least 1mV (60dBu), the picture will be noise free in any area.

Adjusting RF AGC to one end of rotation will usually cause a relatively poor signal to noise ratio; Adjusting to the other end of rotation will usually cause a degradation of over load capabilities resulting in color beats or adjacent channel interference.

Adjustment Note!!

1. Connect RF signal (65dB± 0.5dB) and turn on the TV.
2. Press MENU buttons on TV set and Remote Controller at the same time to get into SVC mode.
3. Press YELLOW button on the Remote Controller several times to find AGC.
4. Press Volume UP/DOWN button until the AGC Voltage is the same as the Table below.
5. Press OK button to memorize the data.
6. Press TV/AV button to exit SVC mode.

ADJUSTMENT

4. SVC Data Adjustment

NOTE!! When the EEPROM has been replaced, the SVC data should be restored as the function of individual system and specification.

- 1) Press 5 Seconds MENU buttons on both TV set and Remote Controller at the same time to get into SVC mode.
- 2) Press the Yellow button several times to find SVC Data.
- 3) Input the corresponding SVC data referring to Table below with the Volume Up/down key.
- 4) Press the OK button to memorize the data.
- 5) Press TV/AV button to exit SVC mode

5-1. SVC Data Table

PAGE	ITEM	VALUE1	VALUE2	REMARK
DATA 1	AGC	20		Variable Data(0-31)
	RD	80		PC Contrast Coefficient-RED(0-255)
	GD	80		PC Contrast Coefficient-GREEN(0-255)
	BD	80		PC Contrast Coefficient-BLUE(0-255)
	RO	32		PC Brightness Coefficient-RED(0-63)
	GO	32		PC Brightness Coefficient-GREEN(0-63)
	BO	32		PC Brightness Coefficient-BLUE(0-63)
	S-B	20		PC Sub-Brightness(0-31)
	PC CP	0		PC Charge Pump(0-7)
	50 PR *			* means current program NO.
DATA 2	FP	21		FM Prescaler(0-127)
	NP	89		NICAM Prescaler(0-127)
	SP	50		SCART Prescaler(0-127)
	S1 VOL	105		SCART1 Volume(0-127)
	S2 VOL	105		SCART2 Volume(0-127)
	50 PR *			* means current program NO.
DATA 3	200PR	0	0	100PR
			1	200PR
	TEXT	1	0	Not apply to TEXT
			1	Apply to TEXT
	TOP	1	0	TELETEXT TOP OFF
			1	TELETEXT TOP ON
	SCART	0	0	Apply to COMPONENT
			1	Apply to SCART
	ACMS	1	0	Not apply to ACMS
			1	Apply to ACMS
	CH+AU	0	0	Used except for CHINESS or AUSTRALIA
			1	Used CHINESS or AUSTRALIA
	SYS	2	0	BG/I/DK
1			BG/I/DK/L	
2			BG/I/DK/M	
50 PR *				* means current program NO.
106	Opt 1			Translate HEX into DEC(DATA3VALUE1)

5-2. SVC Data Table

PAGE	ITEM	VALUE1	VALUE2	REMARK	
DATA 4	DUAL	0	0	Not apply to DUAL option	
			1	Apply to DUAL option	
	MONO	0	0	Not apply to MONO option	
			1	Apply to MONO option	
	A2 ST	1	0	Not apply to NICAM STEREO option	
			1	Apply to NICAM STEREO option	
	VOL	1	0	Sound curve option 1	
			1	Sound curve option 2	
	AV1	1	0	Not apply to YUV / SCART	
			1	Apply to YUV OR SCART	
	KEY	0	0	6-KEY	Key option
			1	4-KEY	
	LANG	2	0	ENG ONLY	ENGLISH ONLY
			1	EU-5EA	ENGLISH/GERMAN/FRANCE/ITALY/SPAIN
			2	EU CIS	EU-5EA + CIS
			3	E+CHINA	ENGLISH + CHINESS
			4	E+HUNGARY	ENGLISH+ HUNGRAY
			5	RESERVED	
			6	RESERVED	
	T-LAN	6	0	WEST EU	WEST EU U.K./GERMAN/FRANCE/ITALY/SPAIN/SWEDEN/CZECH Rep./NORWAY etc
			1	EAST EU1	POLAND/SLOVENIA/ROMANIA etc
			2	TURKEY EU	TURKEY
			3	EAST EU2	HUNGRY/SERVIA
			4	CYRILLIC1	ESTONIA
			5	CYRILLIC2	ESTONIA
			6	CYRILLIC3	RUSIA/UKRAINE/ESTONIA/CROATI A/KAZAKHSTAN
			7	TURK GRE1	
			8	TURK GRE2	
			9	TURK GRE3	TURKEY/GREECE
			10	ARAB ERA	
			11	ARAB ENG	ARAB CULTURE
			12	ARAB HEB1	
13			ARAB HEB2	ARAB/HEBREW	
14			FARS ENG	PARSI	
15			FARS FRA		
16	FARS ALL				
50 PR *				* means current program NO.	
57	Opt 2			Translate HEX into DEC(DATA4)	

ADJUSTMENT

6.AGC Adjustment (SVC Data 1)

Note!! Adjust a RF AGC of world standard tuner only.

2 in 1 tuner need not AGC adjust.

Test point : AGC pin of Tuner
Adjust : Remote Controller

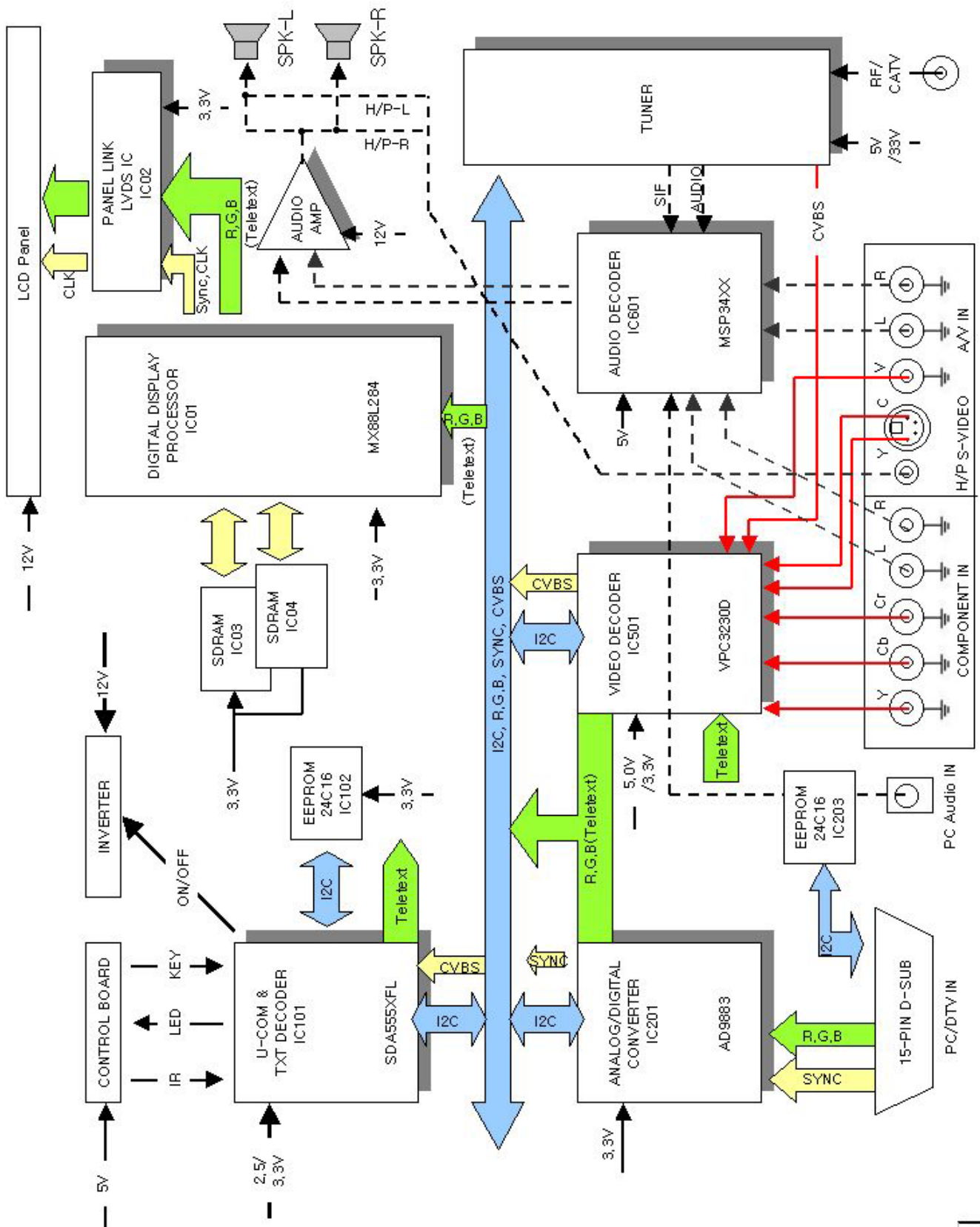
- 1) Connect RF signal ($65\pm, 0.5\text{dB}\mu\text{V}$) and tune on the TV.
 ➔ Standard adjustment channel
 - 07CH ($f_r = 175.25\text{MHZ}$)
- 2) Press 5 seconds MENU buttons on TV set and Remote controller at the same time to get into SVC Data.
- 3) Press the channel up/down button on the Remote Controller several times to find AGC??
- 6) Press the volume up/down button until the AGC voltage is the same as Table below.
- 7) Press **OK** button to memorize the data.

7.Optional Function

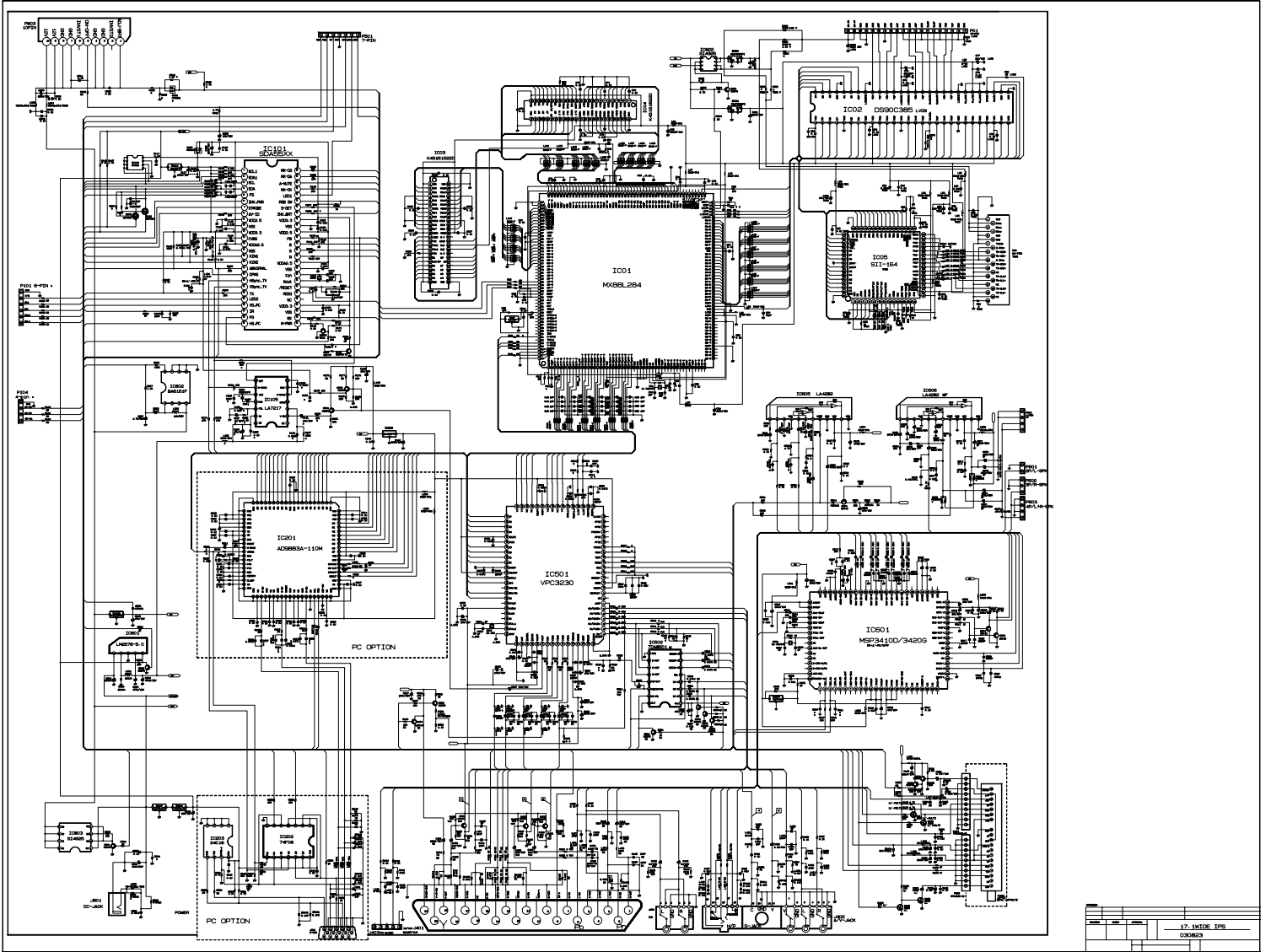
OPTION	CODE	FUNCTION	REMARK
KEY	0	6-KEY	Local key option
	1	4-KEY	
AV1	0	W/O COMPONENT	Disable
	1	COMPONENT	Enable
LANG	0	AMERICA	English, French, Espanol
	1	ENG 2EA	English, Espanol, Portugunese
	2	KOREA	Korea,
	3	RESERVED	English
TUNE	0	AMERICA	Tuning option of each country
	1	KOREA	
	2	JAPAN	
	3	RESERVED	

BLOCK DIAGRAM

Block Diagram

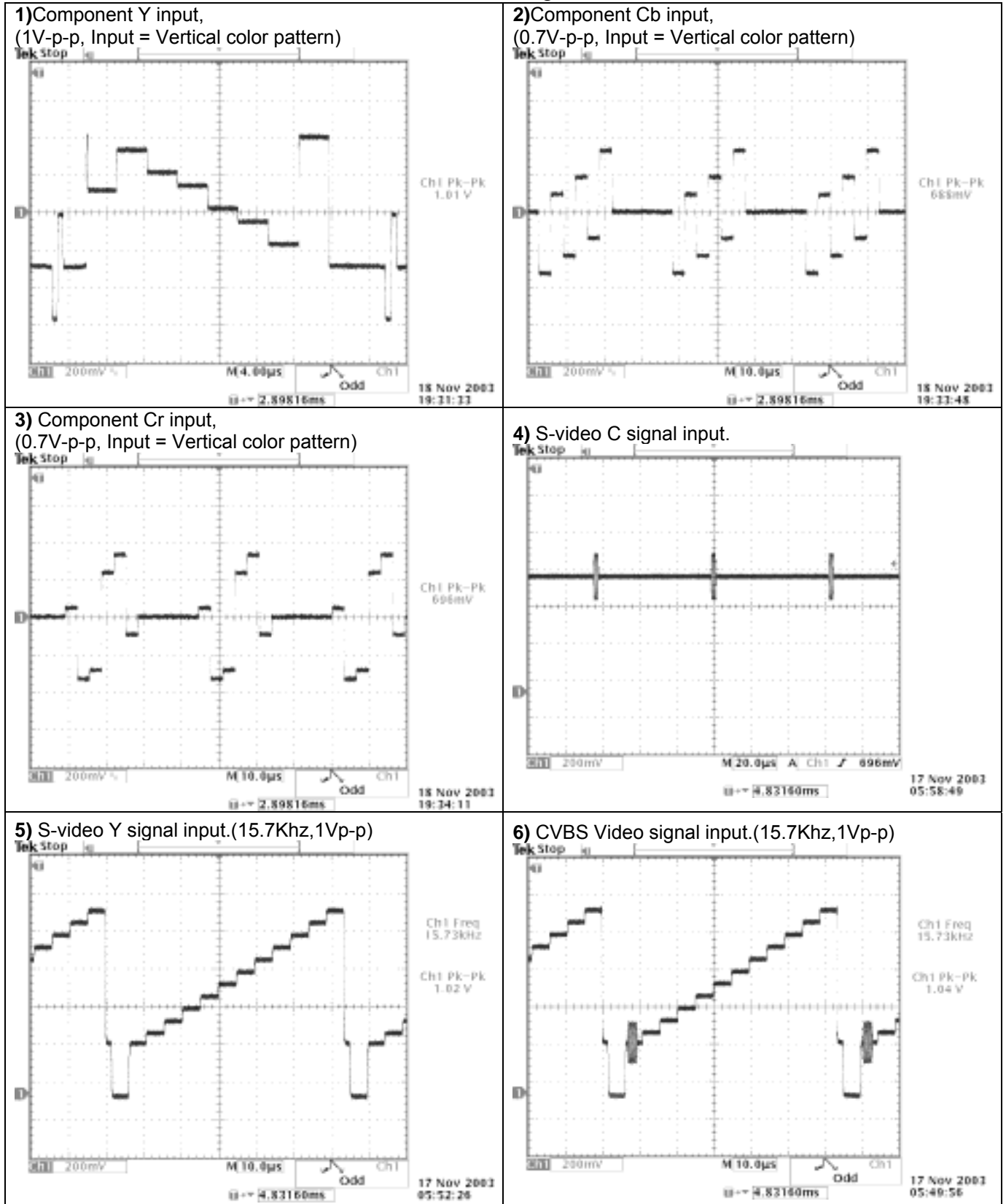


Schematic diagram



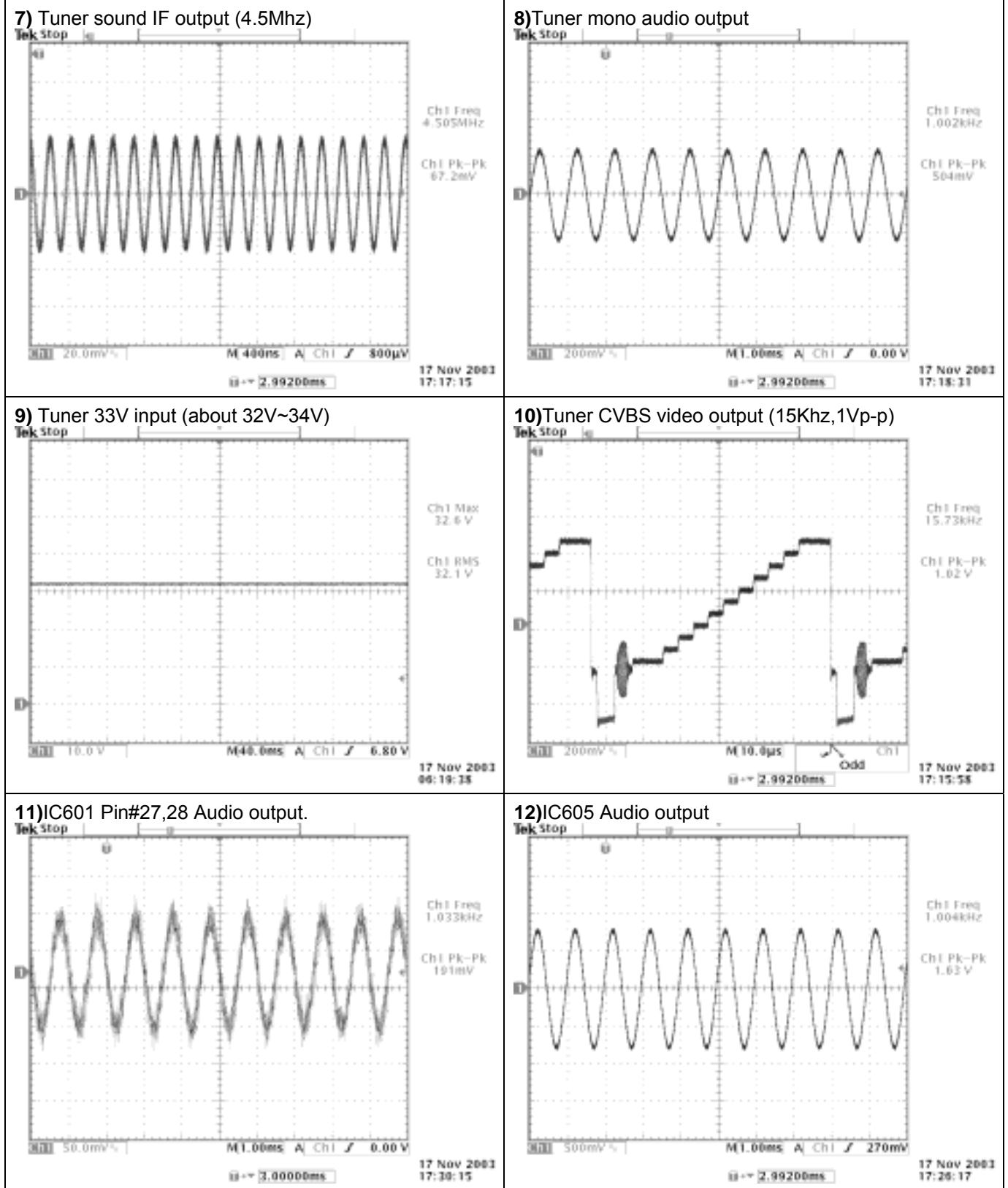
WAVE FORM

NOTE!!: Video = Gray scale pattern input / Audio = 1Khz input at volume step 40.
You can find number from Schematic Diagram



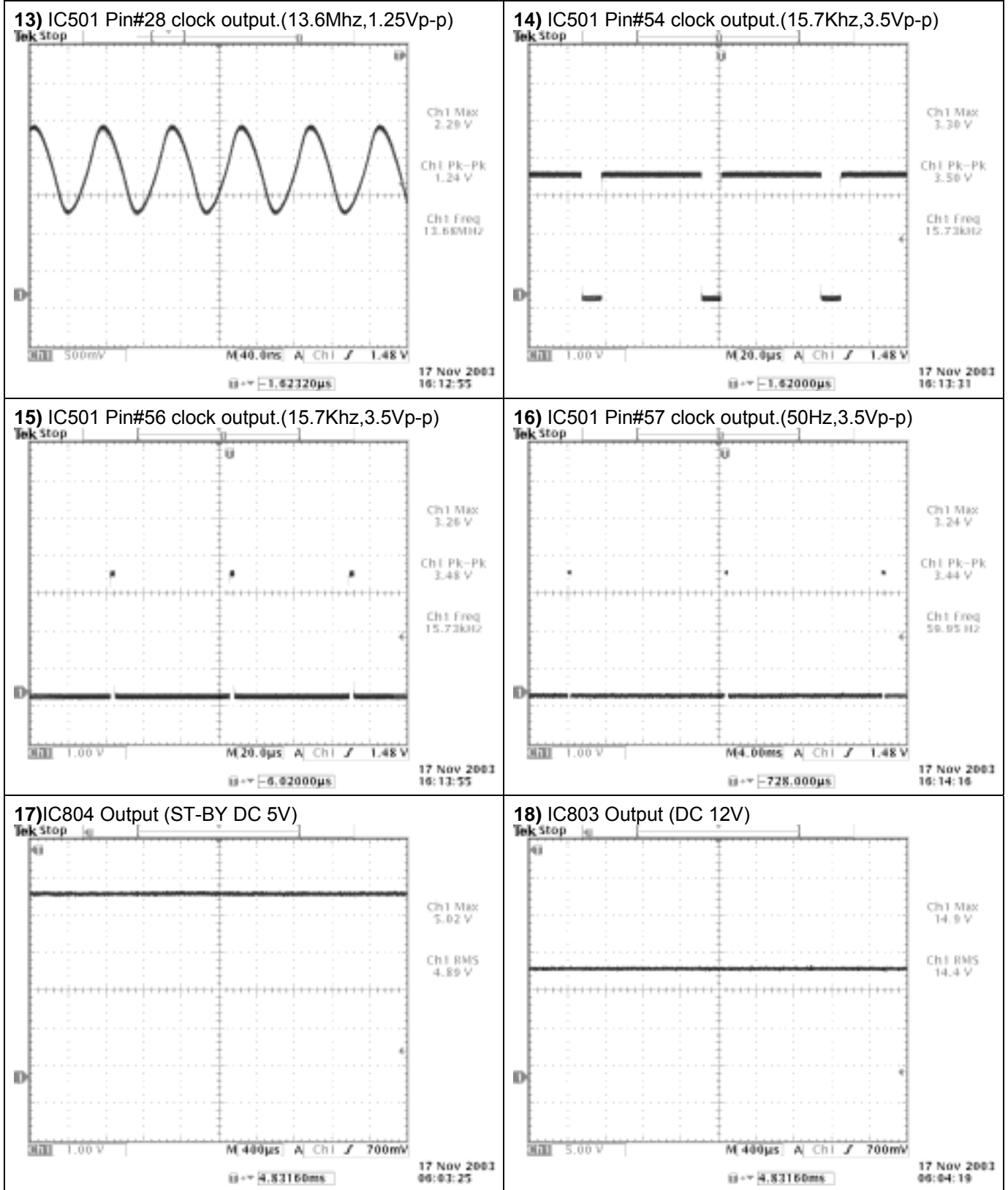
WAVE FORM

NOTE!!: Video = Gray scale pattern input / Audio = 1Khz input at volume step 40.



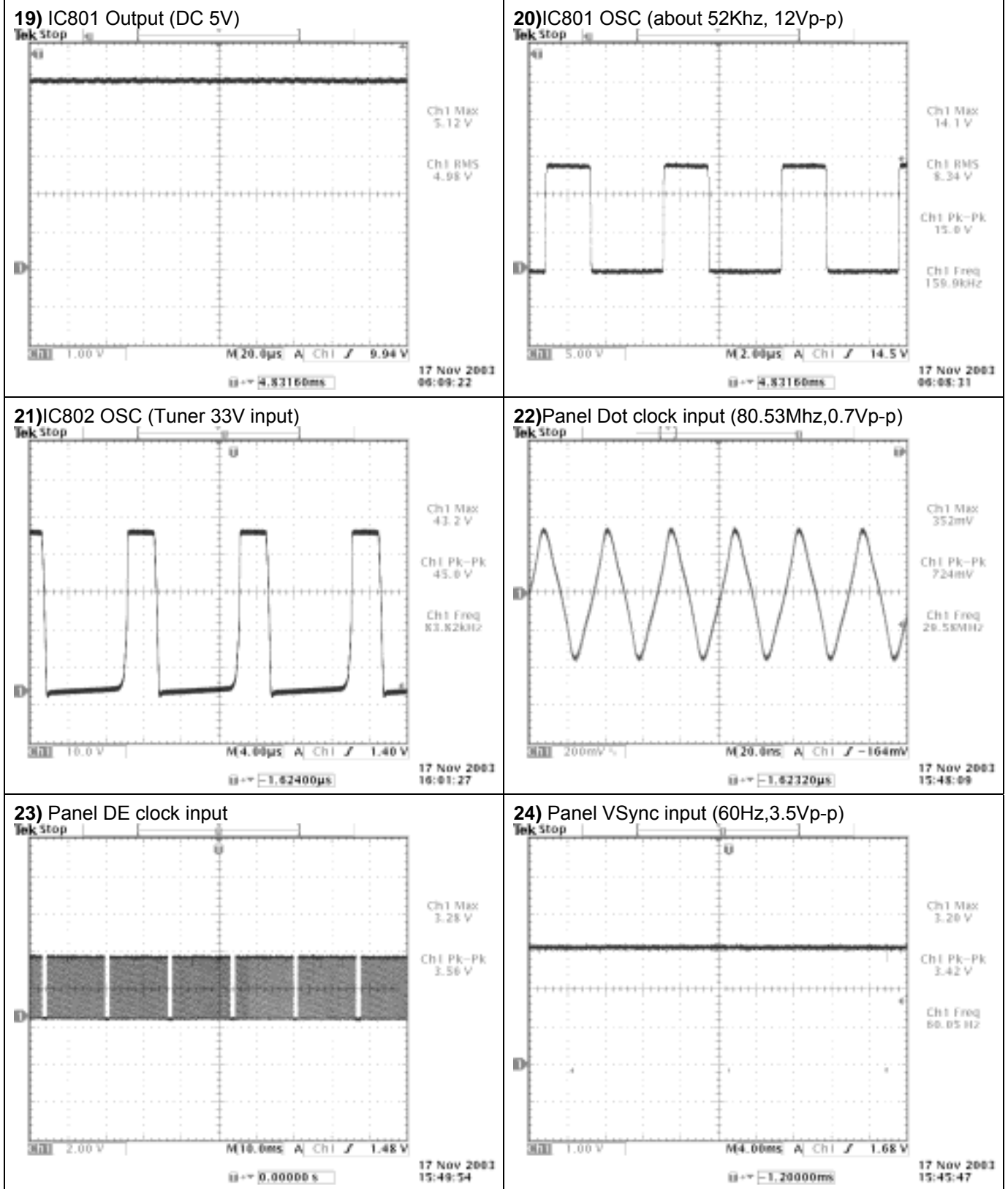
WAVE FORM

NOTE!!: Video = Gray scale pattern input / Audio = 1Khz input at volume step 40.



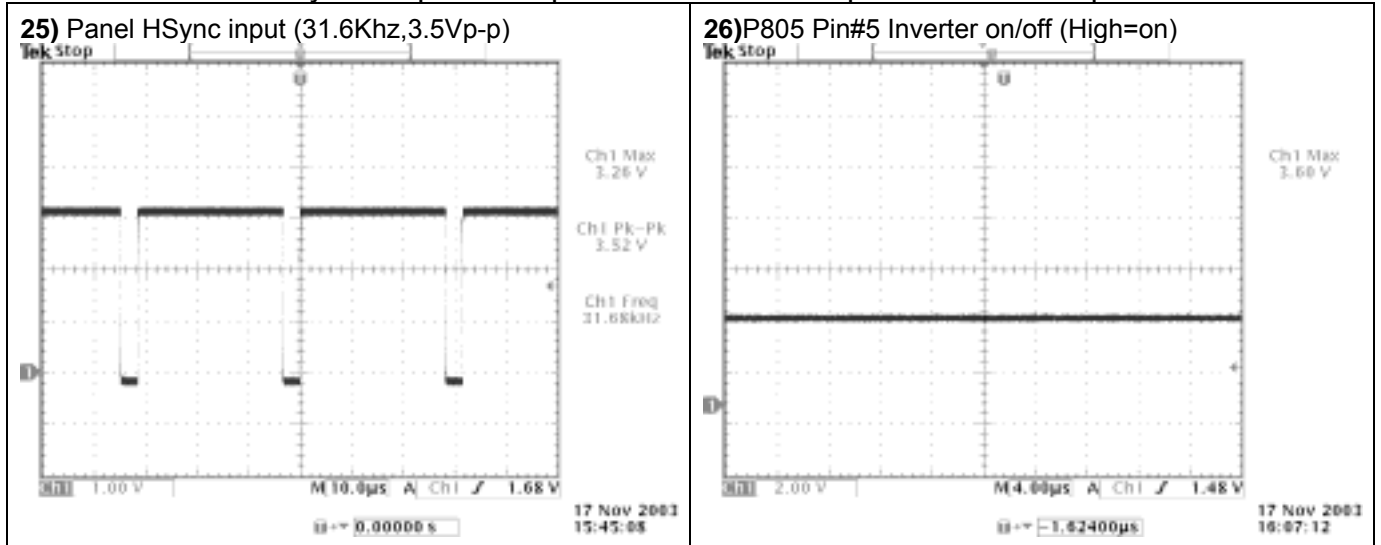
WAVE FORM

NOTE!!: Video = Gray scale pattern input / Audio = 1Khz input at volume step 40.

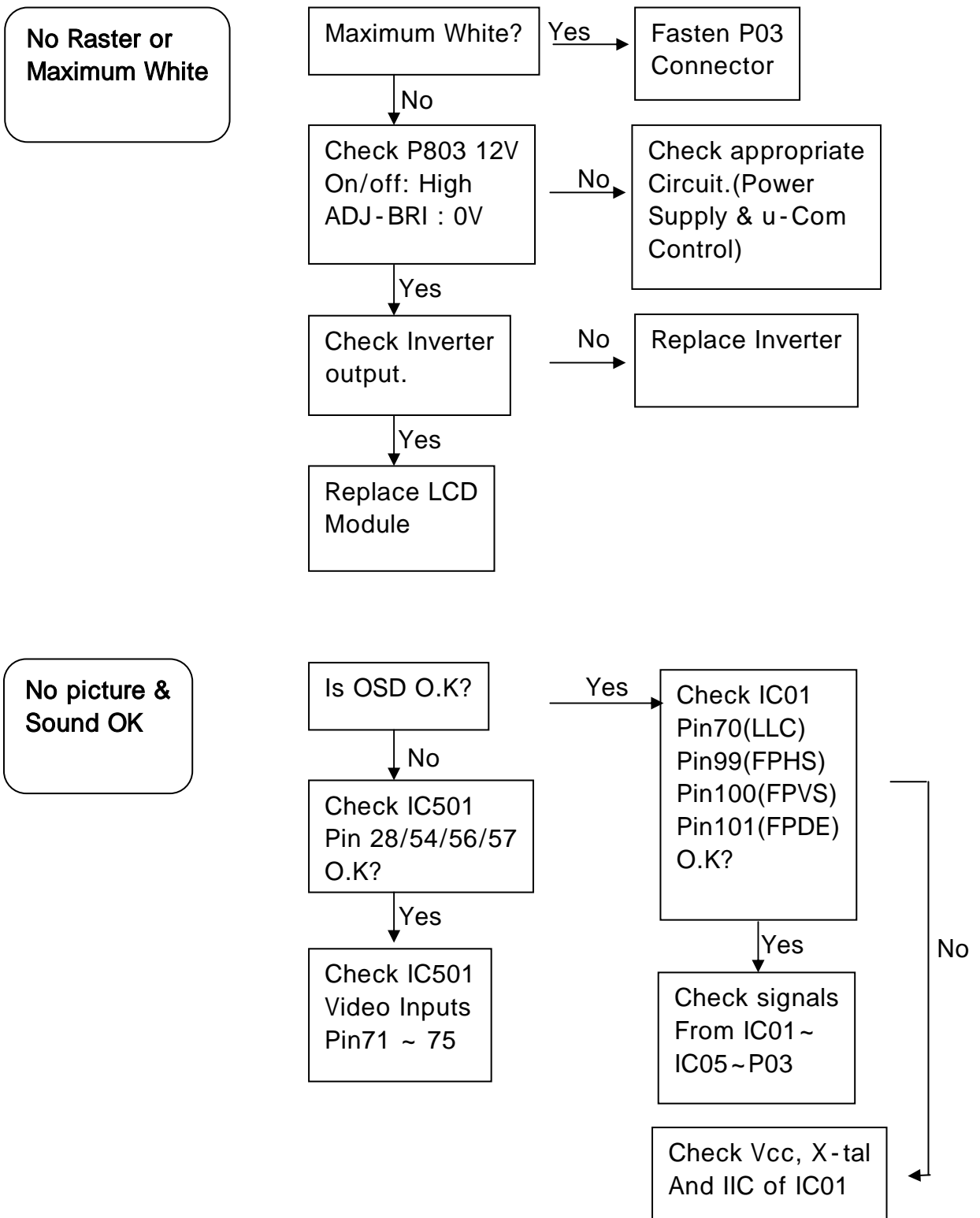


WAVE FORM

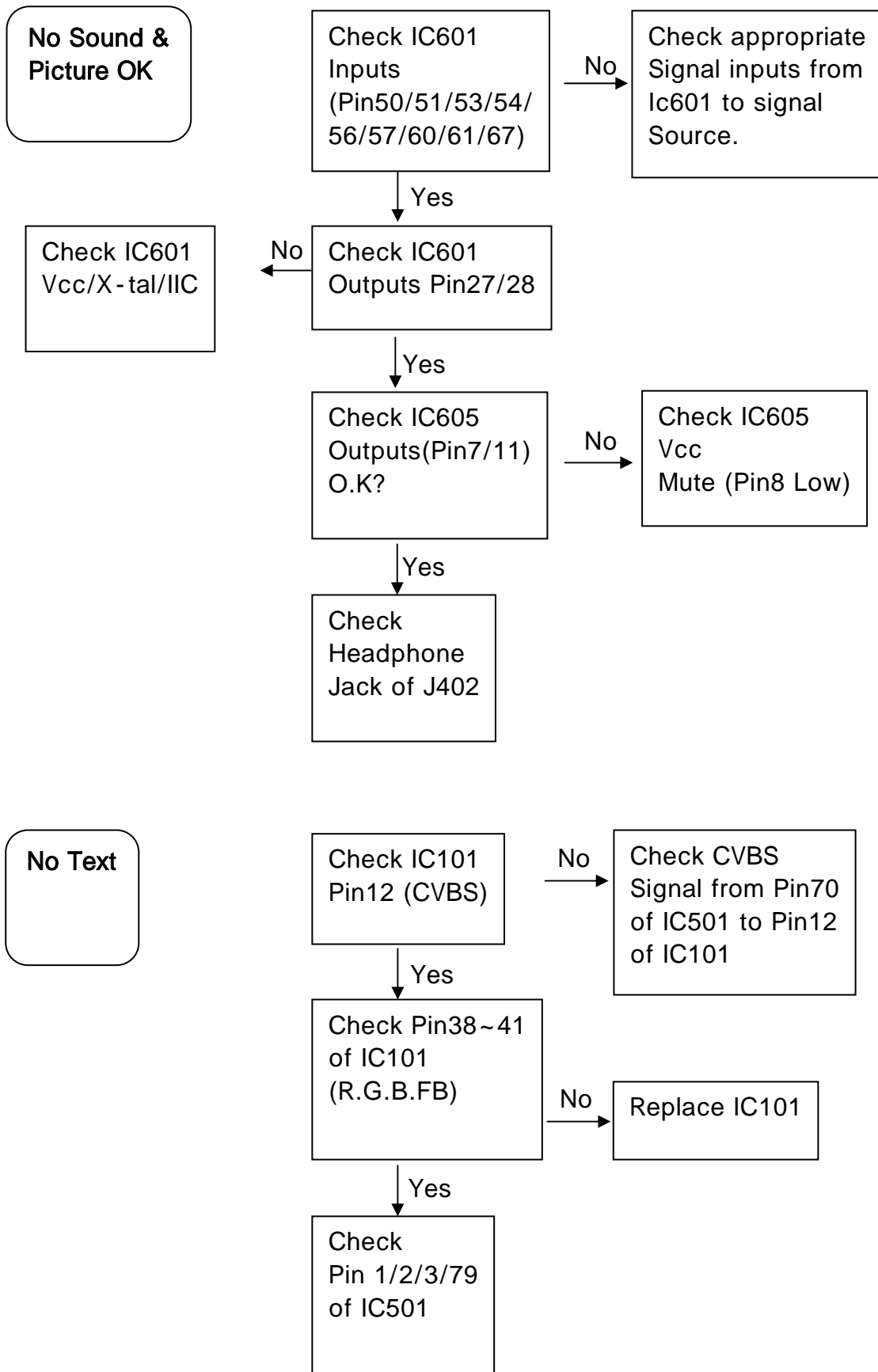
NOTE!!: Video = Gray scale pattern input / Audio = 1Khz input at volume step 40.



TROUBLE SHOOTING



TROUBLE SHOOTING



REPLACEMENT PART LIST

1.Parts List (Assemble process)

LEVEL	PART NO	PART NAME	DESCRIPTIONS	Q,TY
1	300-003L	BOX, ACCESSORY	17.1" N/F MODEL COMMON	1
1	300-009N	BOX, GIFT	RL-17S10(LT-17FTP), RUS, ROLSEN	1
1	310-013C	PACKING, LEFT	17.1" F/N MODEL COMMON	1
1	310-013D	PACKING, RIGHT	17.1" F/N MODEL COMMON	1
1	320-001A	BAG, VINYL	ACCESSORY PACKING	1
1	321-002A	BAG, PACKING	15.1" A/E SET PACKING	1
1	322-001A	HANDLE, UP	15.1" HANDLE	1
1	322-001B	HANDLE, DOWN	15.1" HANDLE	1
1	401-002X	COVER, BACK	17.1" F/N MODEL, COLOR:GRAY	1
1	402-005A	COVER, HINGE	17.1" N MODEL COMMON, LEFT	1
1	402-005B	COVER, HINGE	17.1" N MODEL COMMON, RIGHT	1
1	404-004A	BLOCK KNOB	F/N-MODEL, LOCAL KEY, Chromium	1
1	407-001M	SHIELD, FRONT	17.1", F/N MODEL COMMON	1
1	407-002J	SHIELD, REAR	17.1" F/N MODEL COMMON, PCB ASSY COVER	1
1	407-003Q	SHIELD, JACK	17.1" IPS MODEL, YUV	1
1	410-001K	SCREW	TTB 3*8	22
1	410-001N	SCREW	FTB 3*6	12
1	410-001P	SCREW	FTB 3*4	10
1	410-001Q	SCREW	BTB 4*12	10
1	410-002Q	SCREW	PS 4*10	4
1	450-001S	DECO PLATE	17.1" N/F MODEL COMMON, PAL/NTSC	1
1	490-001J	FORM, SHIELD	GASKET, 71TS 7-NO.3-260-00	1
1	490-011C	FORM, SHIELD	GASKET, 71TS-FK 20-2-34-13-S	1
1	490-011D	FORM, SHIELD	GASKET, 71TS-FK 7-0.5-100-13	1
1	490-011E	FORM, SHIELD	GASKET, 71TS-FK 7-0.5-90-13	1
1	490-011F	FORM, SHIELD	GASKET, 71TS-FK 7-0.5-45-13	1
1	490-011G	FORM, SHIELD	GASKET, 71TS-FK 12-2.5-30-13	1
1	491-001A	TAPE, CONDUCTIVE	W:40mm,L:20mm, COPPER	3
1	492-001A	FERRITE CORE	CLIP CORE, ZCAT13250530	1
1	492-001C	FERRITE CORE	CLIP CORE, ZCAT1518-0730	1
1	499-001C	TAPE,	W:20mm	130mm
1	499-002A	TAPE,	W:70mm	1300mm
1	499-004A	TAPE, ACETATE	W:20mm, L:30m	200mm
1	500-003X	OWNER'S MANUAL	RL-17S10(LT-17FTP), RUS, ROLSEN	1
1	501-001R	LABEL, WARNING	ROLSEN/ELSON, RUS	1
1	501-0030	LABEL, SERIAL	, SILVER/BLACK	1
1	501-016F	STICKER,LOGO	ROLSEN, 15/17" SIZE 40MM	1
1	501-062J	LABEL, ID	RL-17S10(LT-17FTP), RUS, ROLSEN	1
1	502-0010	LABEL, BOX ID	CARTON BOX, ALL MODEL	1
1	507-001A	LABEL, PROTECTIVE	PANEL FILM FIX	2
1	510-011A	REMOCON	NO BRAND,ARC,PR,TEXT,ENG	1
1	520-001A	BATTERY	1.5V, AAA SIZE	2
1	522-001M	WARRANTY CARD	ROLSEN, COMMON, RUS	1
1	610-004A	SPEAKER	3W, 4 OHM	2
1	620-001C	AC/DC ADAPTER	12V, 5.0A	1
1	621-001B	POWER CORD	250V, 2-PIN,1.8M, BK, VDE KKP-4819R	1
1	622-005B	INVERTER, DC-AC	17.1", FIF1766-31A	1
1	626-001A	CABLE, PC RGB	IVORY, 1.8M, 15-PIN	1
1	627-001A	CABLE, PC-SOUND	1.8M, BK	1
1	AYCALT21B02A	CABINET ASS'Y	17.1" F MODEL, PR	1
1	AYCOLT32A01A	CONTROL PCB ASS'Y	F/N MODEL, 111-A34A-30 CONTROL	1
1	AYMALT17A01C	MAIN PCB ASS'Y	LT-17TP, YUV+MSP3410D+TAFD-Z242D	1
1	AYSTLT21B02A	STAND ASS'Y	17.1" F MODEL	1
1	CON02P200A0L	LEAD ASSY	17.1" SPK, 2-PIN 270MM	1
1	CON03P200A0S	LEAD ASSY	17.1" SPK, 3-PIN 600MM	1
1	CON05P200ABH	LEAD ASSY	30.1" LED, 5-PIN 200MM H/H	1
1	CON07P200ADN	LEAD ASSY	17.1" CONTROL, 7-PIN 420MM	1
1	CON10P100ACF	LEAD ASSY	17.1" IPS INVERTER, 10-PIN 150MM	1
1	CON20P125ABL	LEAD ASSY	23", Panel, 20 PIN, 200MM	1
1	PANLC171W030	PANEL, LCD COLOR	17.1", 450CD, LC171W03(A3)	1

REPLACEMENT PART LIST

2.Parts List (Main PCB)

LEVEL	P/N	PART NAME	DISCRIPTION	LOCATION NO.	Q'TY
0	AYMALT17A01C	MAIN PCB ASS'Y	LT-17TP, MULTI		1
1	GRLT21BS001H	GR, 17.1" YUV SMD			1
2	0TRKE3875STS	TRANSISTOR, CHIP	KTC3875S	Q401,Q402,Q403	3
2	0RHSS750DJTS	RESISTOR, CHIP	75 OHM, 1608 J	C409,C410	2
2	0RHSS474DJTS	RESISTOR, CHIP	470K OHM, 1608 J	R445,R446	2
2	0RHSS473DJTS	RESISTOR, CHIP	47K OHM, 1608 J	R402,R416,R419	3
2	0RHSS333DJTS	RESISTOR, CHIP	33K OHM, 1608 J	R403,R417,R420	3
2	0RHSS102DJTS	RESISTOR, CHIP	1K OHM, 1608 J	R404,R418,R421	3
2	0RHSS101DJTS	RESISTOR, CHIP	100 OHM, 1608 J	R406,R514	2
2	0RHSS000DJTS	RESISTOR, CHIP	0 OHM, 1608 J	R424,R425,R540,R541, R542,R546	6
1	GRLT21BS001F	GR, 17.1" LVDS SMD			1
2	WAFYH20125AS	WAFER, PIN	20-PIN, P1.25mm ANGLE	P01	1
2	1ICNS90C385S	IC, LVDS	DS90C385	IC02	1
2	0RHSS220DJTS	RESISTOR, CHIP	22 OHM, 1608 J	R30	1
2	0RHSS000DJTS	RESISTOR, CHIP	0 OHM, 1608 J	R78,R82	2
2	0LBSS101DJTS	BEAD, CHIP	100 OHM, 2012	L03	1
2	0CHSS104DZTS	CAPACITOR, CHIP	0.1UF,1608	C76,C78,C79,C80, C81	5
1	GRLT21BS001D	GR, 17.1" MULTI SMD			1
2	1ICM3410DBS	IC, SOUND DECODER	MSP3410D	IC601	1
2	0RHSS821DJTS	RESISTOR, CHIP	820 OHM, 1608 J	R553	1
2	0RHSS472DJTS	RESISTOR, CHIP	4.7K OHM, 1608 J	R136,R137	2
2	0RHSS221DJTS	RESISTOR, CHIP	220 OHM, 1608 J	R117	1
2	0DHKEC102STS	DIODE, CHIP	KRC102S	Q101,Q102	2
1	GRLT21BS001A	GR, 17.1" COMMON SMD			1
2	WAFJS10100AS	WAFER, PIN	10-PIN, P1.0mm	P803	1
2	1ICSE24C16TS	IC, EEPROM	16K	IC102,IC203	2
2	0RHSS392DJTS	RESISTOR, CHIP	3.9K OHM, 1608 J	R609,R610	2
2	0RHSS332DJTS	RESISTOR, CHIP	3.3K OHM, 1608 J	R119,R125,R127,R129, R143,R145,R170,R171, R172,R213	10
2	0RHSS273DJTS	RESISTOR, CHIP	27K OHM, 1608 J	R18,R606	2
2	0RHSS272DJTS	RESISTOR, CHIP	2.7K OHM, 1608 J	R196,R197,R533	3
2	0RHSS270DJTS	RESISTOR, CHIP	27 OHM, 1608 J	R01	1
2	0RHSS223DJTS	RESISTOR, CHIP	22K OHM, 1608 J	R104,R153,R183	3
2	0RHSS221DJTS	RESISTOR, CHIP	220 OHM, 1608 J	R181,R182	2
2	0RHSS220DJTS	RESISTOR, CHIP	22 OHM, 1608 J	R04,R05,R06,R07,R11, R13,R14,R140,R141, R142,R15,R151,R152, R176,R177,R190,R191, R192,R20,R203,R206, R207,R21,R211,R214, R215,R216,R22,R246, R248,R253,R254,R405, R516,R517,R518,R519, R520,R534,R813	40
2	0RHSS182DJTS	RESISTOR, CHIP	1.8K OHM, 1608 J	R814	1
2	0RHSS151DJTS	RESISTOR, CHIP	150 OHM, 1608 J	R557,R630	2
2	0RHSS123DJTS	RESISTOR, CHIP	12K OHM, 1608 J	R178	1
2	0RHSS122DJTS	RESISTOR, CHIP	1.2K OHM, 1608 J	R807	1
2	0RHSS112DJTS	RESISTOR, CHIP	1.1K OHM, 1608 J	R552	1
2	0RHSS105DJTS	RESISTOR, CHIP	1M OHM, 1608 J	R08,R602	2
2	0RHSS104DJTS	RESISTOR, CHIP	100K OHM, 1608 J	R149,R806	2
2	0RHSS103DJTS	RESISTOR, CHIP	10K OHM, 1608 J	R210,R247,R249,R603, R631,R802,R805	7

REPLACEMENT PART LIST

3.Parts List (Main PCB)

LEVEL	P/N	PART NAME	DISCRIPTION	LOCATION NO.	Q'TY
2	0RHSS102DJTS	RESISTOR, CHIP	1K OHM, 1608 J	R109,R115,R154,R155, R160,R163,R255,R256, R611,R612,R613,R614, R615,R616,R622,R629, R632,R633,R661,R662, R801,R804,R821	23
2	0RHSS101DJTS	RESISTOR, CHIP	100 OHM, 1608 J	R03,R106,R107,R111, R112,R113,R114,R118, R122,R124,R126,R128, R130,R132,R144,R17, R174,R175,R179,R193, R194,R195,R23,R258, R259,R506,R509,R510, R511,R526,R601,R607, R608,R617	34
2	0RHSS100DJTS	RESISTOR, CHIP	10 OHM, 1608 J	R260,R532,R605	3
2	0RHSS000DJTS	RESISTOR, CHIP	0 OHM, 1608 J	R102,R12,R164,R166, R201,R205,R209,R212, R430,R501,R502,R505, R507,R508,R808,R812, R815	17
2	0LYSS600DJTS	INDUCTOR, ARRAY CHIP	60 OHM, 3216	LA01,LA02,LA03,LA04, LA05,LA06,LA07,LA08, LA09,LA10,LA11,LA12, LA13,LA14,LA15,LA16, LA17,LA18,LA19,RA01, RA02,RA03,RA04,RA05, RA06	25
2	0LBSS601KJTS	BEAD, CHIP	600 OHM, 3A 3216	L803,L804	2
2	0LBSS601FJTS	BEAD, CHIP	600 OHM, 3216	L04,L05,L06,L07,L106, L209,L210,L601,L602, L603,L604	11
2	0LBSS260DJTS	BEAD, CHIP	26 OHM, 2012	L202	1
2	0LBSS101DJTS	BEAD, CHIP	100 OHM, 2012	L02,L243,L244,L245, L406,L407,L409,L411, L412,L440,L441	11
2	0ICVI4925DTS	IC, MOSFET CHIP	SI4925	IC803,IC822	2
2	0ICSS41616BS	IC, CMOS SDRAM CHIP	512K*16BIT*2 SDRAM	IC03,IC04	2
2	0ICKE78L9FTS	IC, REGULATOR CHIP	KIA78L09F, 9.0V	IC807	1
2	0ICKE78L5FTS	IC, REGULATOR CHIP	KIA78L05F, 5.0V	IC804	1
2	0ICKE7042FTS	IC, RESET CHIP	KIA7042AF, 4.2V RESET	IC603	1
2	0ICKE7027FTS	IC, RESET CHIP	KIA7027AF, 2.7V RESET	IC07,IC103	2
2	0DSSCB340ATS	DIODE, SCHOTTKY CHIP	B340A, 3A	D803	1
2	0DHKEKDS181S	DIODE, CHIP	KDS181	D102,D603,D604,D801, D805	5
2	0CHSS683DKTS	CAPACITOR, CHIP	0.068UF,1608	C501,C502,C559	3
2	0CHSS620DJTS	CAPACITOR, CHIP	62PF,1608	C151,C152	2
2	0CHSS560DJTS	CAPACITOR, CHIP	56PF,1608	C424,C604,C605	3
2	0CHSS474DZTS	CAPACITOR, CHIP	0.47UF,1608	C800	1
2	0CHSS472DKTS	CAPACITOR, CHIP	4700PF,1608	C638	1
2	0CHSS471DJTS	CAPACITOR, CHIP	470PF,1608	C407,C408,C411,C425, C426,C441,C442	7
2	0CHSS470DJTS	CAPACITOR, CHIP	47PF,1608	C124,C125	2
2	0CHSS393DKTS	CAPACITOR, CHIP	0.039UF,1608	C219,C228,C232,C237, C519,C537,C548,C557	8
2	0CHSS392DKTS	CAPACITOR, CHIP	3900PF,1608	C222	1
2	0CHSS391DJTS	CAPACITOR, CHIP	390PF,1608	C521,C540,C550	3

REPLACEMENT PART LIST

4.Parts List (Main PCB)

LEVEL	P/N	PART NAME	DISCRIPTION	LOCATION NO.	Q'TY
2	0CHSS332DKTS	CAPACITOR, CHIP	3300PF,1608	C623	1
2	0CHSS331DJTS	CAPACITOR, CHIP	330PF,1608	C181,C182	2
2	0CHSS330DJTS	CAPACITOR, CHIP	33PF,1608	C105,C106,C419	3
2	0CHSS224DZTS	CAPACITOR, CHIP	0.22UF,1608	C110,C511,C512,C513,C514,C515,C516,C523,C541,C552,C626,C631,C632,C633,C634,C635,C661,C662	18
2	0CHSS222DKTS	CAPACITOR, CHIP	2200PF,1608	C528,C617,C618,C627,C628,C629,C630,C663,C664	9
2	0CHSS220DJTS	CAPACITOR, CHIP	22PF,1608	C524,C529,C530	3
2	0CHSS200DJTS	CAPACITOR, CHIP	20PF,1608	C32,C503	2
2	0CHSS152DKTS	CAPACITOR, CHIP	1500PF,1608	C538,C539,C558,C615,C616	5
2	0CHSS150DJTS	CAPACITOR, CHIP	15PF,1608	C39,C40,C420	3
2	0CHSS105DZTS	CAPACITOR, CHIP	1UF,1608	C571,C572,C573,C574,C575,C576,C577,C578	8
2	0CHSS104DZTS	CAPACITOR, CHIP	0.1UF,1608	C01,C02,C03,C04,C05,C07,C107,C114,C116,C118,C127,C129,C131,C143,C145,C203,C204,C205,C206,C207,C209,C210,C212,C213,C214,C215,C216,C217,C218,C225,C229,C230,C233,C234,C235,C240,C243,C33,C36,C37,C38,C41,C42,C421,C505,C506,C507,C508,C509,C510,C542,C555,C614,C620,C624,C636,C647,C651,C654,C67,C68,C69,C70,C71,C72,C73,C74,C802,C808,C811,C812,R809,R810	73
2	0CHSS103DKTS	CAPACITOR, CHIP	0.01UF,1608	C102,C103,C104,C108,C111,C112,C113,C417,C418,C603,C609,C612,C640	13
2	0CHSS102DKTS	CAPACITOR, CHIP	1000PF,1608	C223,C522,C531,C551	4
2	0CHSS101DJTS	CAPACITOR, CHIP	100PF,1608	C109,C404	2
2	0CHSS100DJTS	CAPACITOR, CHIP	10PF,1608	C242,C43,C44,C45,C46,C47,C48,C49,C50,C51,C52,C53,C54,C55,C56,C57,C58,C59,C60,C61,C62,C63,C64,C65,C66	25
2	0CHSS080DCTS	CAPACITOR, CHIP	8PF,1608	C403,C423	2
2	0CHSS030DCTS	CAPACITOR, CHIP	3PF,1608	C208,C553,C554	3
2	0CHSS020DCTS	CAPACITOR, CHIP	2PF,1608	C607,C608	2
2	1ICRO6161FSTS	IC, REGULATOR	BA6161F	IC802	1
2	1ICRO033FPTS	IC, REGULATOR	3.3V 1A, BA033FP	IC104,IC806	2
2	1ICPH74F08TS	IC, AND GATE	74F08	IC202	1
2	1ICM3230DBS	IC, VIDEO DECODER	VPC3230D	IC501	1
2	1ICAD9883ABS	IC, A/D CONVERTER	AD9883A - 110MHZ	IC201	1
2	1IC88L284ABS	IC, SCALER	MX88L284 - AEC	IC01	1

REPLACEMENT PART LIST

5.Parts List (Main PCB)

LEVEL	P/N	PART NAME	DISCRIPTION	LOCATION NO.	Q'TY
2	1DZSC5231BTS	DIODE, ZENER CHIP	5.1V	ZD240,ZD241,ZD242, ZD243,ZD244,ZD245, ZD246,ZD402,ZD403, ZD404,ZD409,ZD410, ZD411,ZD412,ZD413, ZD414,ZD415	17
2	111-A40A	PCB, MAIN	SEVIT 17.1" MAIN		1
2	0TRKE3875STS	TRANSISTOR, CHIP	KTC3875S	Q103,Q104,Q111,Q301 , Q302,Q505,Q801,Q802	9
2	0TRKE1504STS	TRANSISTOR, CHIP	KTA1504S	Q601,Q602,Q604	3
2	0RHSS750DJTS	RESISTOR, CHIP	75 OHM, 1608 J	R243,R244,R245,R408 , R424,R425,R426,R512	8
2	0RHSS683DJTS	RESISTOR, CHIP	68K OHM, 1608 J	R628	1
2	0RHSS680DJTS	RESISTOR, CHIP	68 OHM, 1608 J	R156	1
2	0RHSS562DJTS	RESISTOR, CHIP	5.6K OHM, 1608 J	R131	1
2	0RHSS561DJTS	RESISTOR, CHIP	560 OHM, 1608 J	R620,R627	2
2	0RHSS513DJTS	RESISTOR, CHIP	51K OHM, 1608 J	R423	1
2	0RHSS512DJTS	RESISTOR, CHIP	5.1K OHM, 1608 J	R426,R427,R435,R437 , R442,R444	6
2	0RHSS474DJTS	RESISTOR, CHIP	470K OHM, 1608 J	R436,R438,R441,R442	4
2	0RHSS472DJTS	RESISTOR, CHIP	4.7K OHM, 1608 J	R146,R147,R19,R167, R168,R250,R251,R252 , R515,R618,R619,R625 R110,R134,R135,R407 , R422	16
2	0RHSS471DJTS	RESISTOR, CHIP	470 OHM, 1608 J		5
2	0RHSS470DJTS	RESISTOR, CHIP	47 OHM, 1608 J	R138,R139	2
2	0RHSS433DJTS	RESISTOR, CHIP	43K OHM, 1608 J	R116	1
2	0RHSS3R3DJTS	RESISTOR, CHIP	3.3 OHM, 1608 J	R623,R624	2
2	0RHSS393DJTS	RESISTOR, CHIP	39K OHM, 1608 J	R422	1
1	GRLT21BM001G	GR, 17.1" MULTI MANUAL			1
2	0TULGZ242DBD	TUNER	2 IN 1, TAFD-Z242D	TU101	1
1	GRLT21BM001E	GR, 17.1" YUV MANUAL			1
2	0JAPK6063C0D	JACK, AV	YUV, PJ6063C	J401	1
2	0JAPK6035J2D	JACK, SOUND	AV-L,R SOUND	J404	1
1	GRLT21BM001A	GR, 17.1" COMMON MANUAL			1
2	AYHSLA4282IB	HEAT SINK ASS'Y	LA4282, 42*16	IC605	1
3	498-001A	Silicon Grease			0.05
3	420-001A	HEAT SINK	LA4282 42*16		1
3	410-001J	SCREW	PB 3*8		2
3	1ICSA42820AD	IC, SOUND AMP	LA4282		1
2	WAFYH10250BD	HEADER, PIN	10-PIN, P2.5mm ANGLE	P102-1,P103-1	2
2	WAFYH03200SD	WAFER, PIN	3-PIN, P2.0mm STRAIGHT	P602	1
2	WAFYH02200SD	WAFER, PIN	2-PIN,P2.0mm STRAIGHT	P601	1
2	WAFML07200AD	WAFER, PIN	7-PIN, P2.0mm ANGLE	P501	1
2	1JADM231D	JACK, POWER	DC-POWER, DS231-115	J801	1
2	1ICNS25765AD	IC, REGULATOR	5.0V 3A, LM2576-5.0	IC801	1
2	1ICMI555X0AD	IC, MICOM	SDA555XFL	IC101	1
2	0XTKI600D	CRYSTAL, RADIAL	6.0MHZ	X101	1
2	0XTKI202500D	CRYSTAL, RADIAL	20.25MHZ	X501	1
2	0XTKI184320D	CRYSTAL, RADIAL	18.432MHZ	X601	1
2	0XTKI143180D	CRYSTAL, RADIAL	14.318MHZ	X01-1	1
2	0SOCK52D178D	SOCKET	52-Pin, HD1F-52T-06	#IC101	1
2	0LRSM10100BD	INDUCTOR	100UH, SMC H100	L801	1
2	0LRSM00100BD	INDUCTOR, CHOKE	10mH, SMC103	L802	1
2	0JAPK014A00D	JACK, AV	AV + S-VIDEO + HP	J402	1
2	0JAKKST215BD	JACK, SOUND	ST-215	J403	1

REPLACEMENT PART LIST

6.Parts List (Main PCB)

LEVEL	P/N	PART NAME	DISCRIPTION	LOCATION NO.	Q'TY
2	0JADM15RF00D	JACK, D-SUB	15-PIN, DAH-15RF-4B4	J201	1
2	0ICKE78R33AD	IC, REGULATOR	KIA78R33API 3.3V	IC820,IC821	2
2	0ICKE78080AD	IC, REGULATOR	KIA7808API, 8.0V 1.0A	IC805	1
1	GRLT21BA001D	GR, 17.1" YUV AUTO			1
2	0CESS1R0HMTR	CAPACITOR, ELEC.	1UF 50V	C443,C444	2
2	0CESS100CMTR	CAPACITOR, ELEC.	10UF 16V	C402,C405,C406	3
1	GRLT21BA001B	GR, 17.1" LVDS AUTO			1
2	0CESS100CMTR	CAPACITOR, ELEC.	10UF 16V	C75,C77	2
2	0CESS221EMTR	CAPACITOR, ELEC.	220UF 25V	C822	1
1	GRLT21BA001A	GR, 17.1" COMMON AUTO			1
2	1ICFC2N700TR	IC, LEVEL SHIFT	2N7000TA	Q109,Q110	2
2	1DZSSHZT33TA	DIODE, ZENER AXIAL	33V	ZD101	1
2	1DDSKU1Z0TA	DIODE, RECTIFIER	FAST RECOVERY, 200V	D802	1
2	0RDSS121HJTA	RESISTOR, CARBON	120 OHM, 1/2W J	R428,R429	2
2	0LBSS3580RTR	BEAD CORE, RADIAL	BFD-3580 R2F	L805	1
2	0LASS270FKTA	INDUCTOR, AXIAL	27UH, 3.4*2.5	L413	1
2	0LASS220HKTA	INDUCTOR, AXIAL	22UH, 9.8*4.2	L101,L102,L103,L107	4
2	0LASS120FKTA	INDUCTOR, AXIAL	12UH, 3.4*2.5	L401,L410	2
2	0CQSS103KKTR	CAPACITOR, MYLER	0.01UF 100V	C649,C650	2
2	0CESS4R7HMTR	CAPACITOR, ELEC.	4.7UF 50V	C122,C807	2
2	0CESS471AMTR	CAPACITOR, ELEC.	470UF 10V	C144,C820,C821	3
2	0CESS470CMTR	CAPACITOR, ELEC.	47UF 16V	C520,C549,C613,C655, C816	5
2	0CESS3R3HMTR	CAPACITOR, ELEC.	3.3UF 50V	C132,C625	2
2	0CESS2R2HMTR	CAPACITOR, ELEC.	2.2UF 50V	C422,C642,C645	3
2	0CESS221CMTR	CAPACITOR, ELEC.	220UF 16V	C34,C128,C809	3
2	0CESS220CMTR	CAPACITOR, ELEC.	22UF 16V	C547,C803	2
2	0CESS101EMTR	CAPACITOR, ELEC.	100UF 25V	C801,C804	2
2	0CESS101CMTR	CAPACITOR, ELEC.	100UF 16V	C115,C117,C517,C536, C546,C601,C602,C619, C641,C643,C646	11
2	0CESS100CMTR	CAPACITOR, ELEC.	10UF 16V	C142,C238,C526,C556, C621,C622,C639	7
2	0CESS471CMTR	CAPACITOR, ELEC.	470UF 16V	C648,C652,C653,C805, C806	5
2	0CESS334HMTR	CAPACITOR, ELEC.	0.33UF 50V	C123	1
2	0CESS221AMTR	CAPACITOR, ELEC.	220UF 10V	C146,C35	2
2	0CESS100HMTR	CAPACITOR, ELEC.	10UF 50V	C126	1

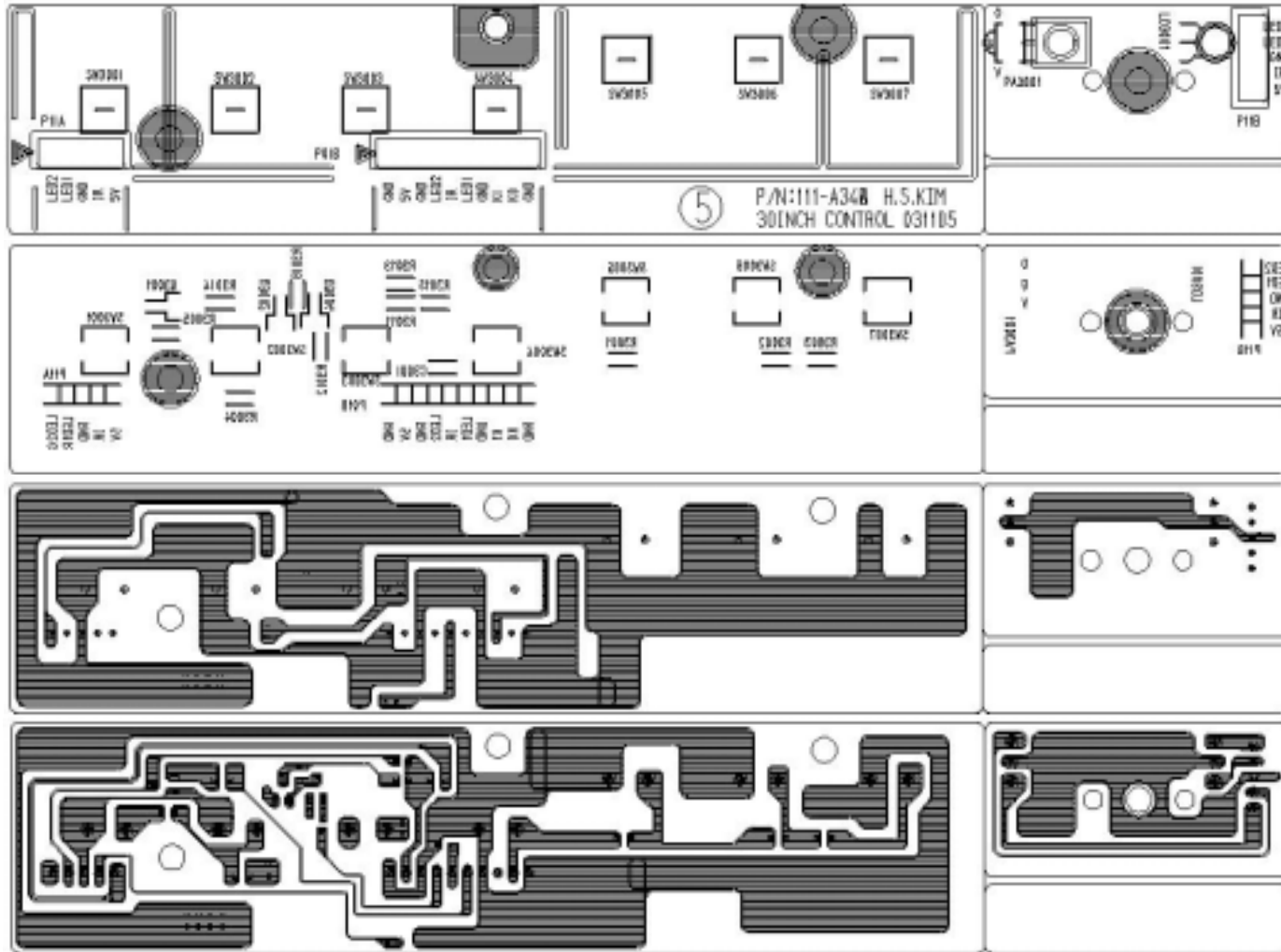
REPLACEMENT PART LIST

8.Parts List (Control PCB)

LEVEL	P/N	PART NAME	DISCRIPTION	LOCATION NO.	Q'TY
0	AYCOLT32A01A000	CONTROL PCB ASS'Y	F/N MODEL, 111 -A34B		1
1	GRLT32AS002A000	GR, 30" Control S/I	CTRL,SMD INSERT		1
2	111-A34B000	PCB, CONTROL(REV.1)	F/N MODEL CONTROL		1
2	0TRKE3875STS000	TRANSISTOR, CHIP	KTC3875S	Q3001,Q3002,Q3004	3
2	0RHSS472DJTS000	RESISTOR, CHIP	4.7K OHM, 1608 J	R3012,R3014,R3016	3
2	0RHSS471DJTS000	RESISTOR, CHIP	470 OHM, 1608 J	R3011,R3013	2
2	0RHSS222DJTS000	RESISTOR, CHIP	2.2K OHM, 1608 J	R3002,R3003,R3005	3
2	0RHSS120DJTS000	RESISTOR, CHIP	12 OHM, 1608 J	R3015	1
2	0RHSS102DJTS000	RESISTOR, CHIP	1K OHM, 1608 J	R3001,R3004	2
2	0CHSS101DJTS000	CAPACITOR, CHIP	100PF,1608	C3001	1
1	GRLT32AM002A000	GR, 30" Control M/I	CTRL,MANUAL INSERT		1
2	WAFYH10200AD000	WAFER, PIN	10-PIN, P2.0mm ANGLE	P108	1
2	WAFYH05200AD000	WAFER, PIN	5-PIN, P2.0mm ANGLE	P11A,P11B	2
2	0PAVI48380AD000	PRE-AMP	PRE-AMP, 38KHZ	PA3001	1
2	0DLSYRG138AD000	DIODE, LED	RED, SL RG138 BIG SIZE	LD3001	1
1	GRLT32AA002A000	GR, 30" Control A/I	CTRL,AUTO INSERT		1
2	600-002A000	SWITCH, TACT	YTP-1141A	SW3001,SW3002, SW3003,SW3004, SW3005,SW3006, SW3007	7

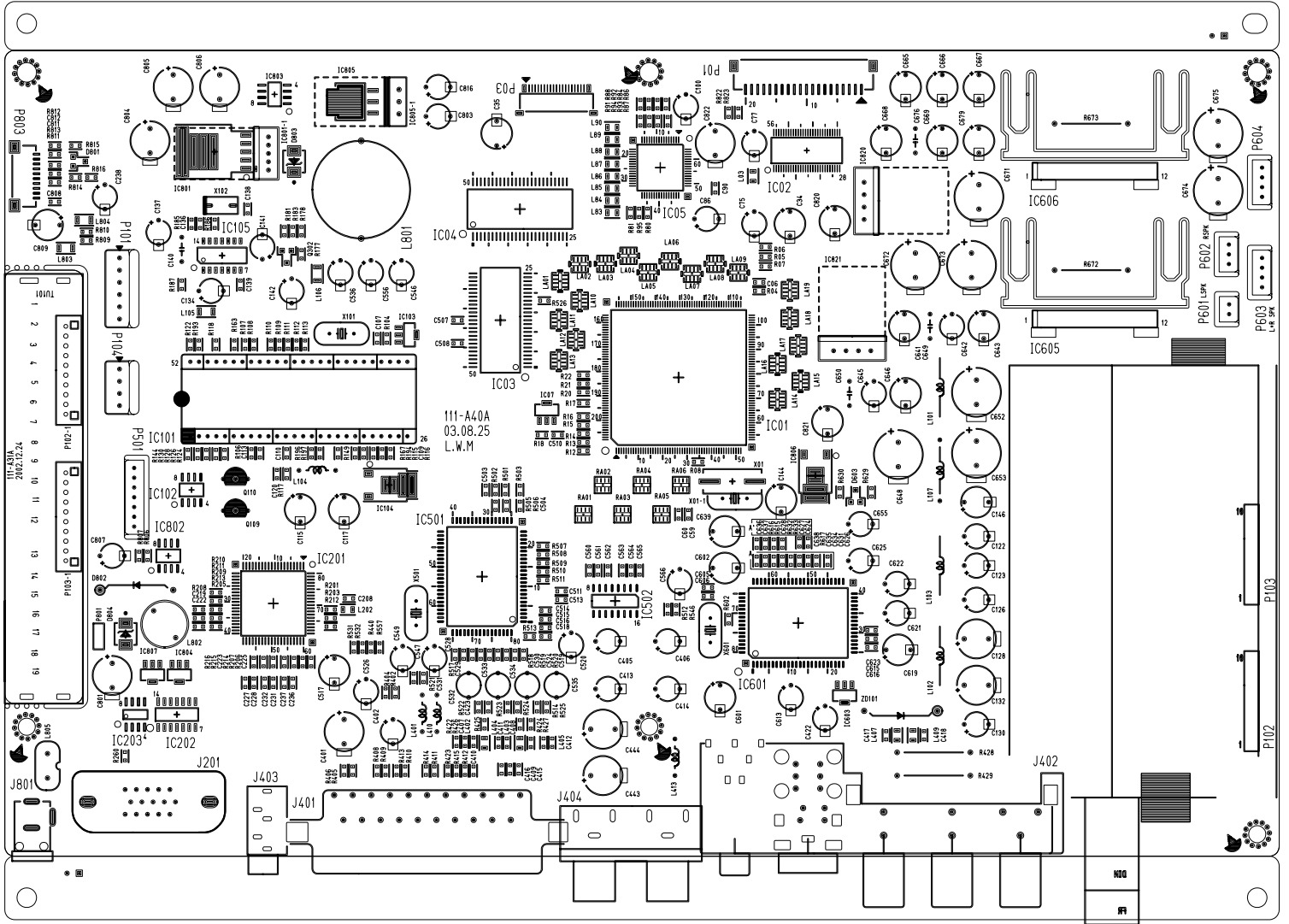
PCB LAYOUT

1. Control PCB



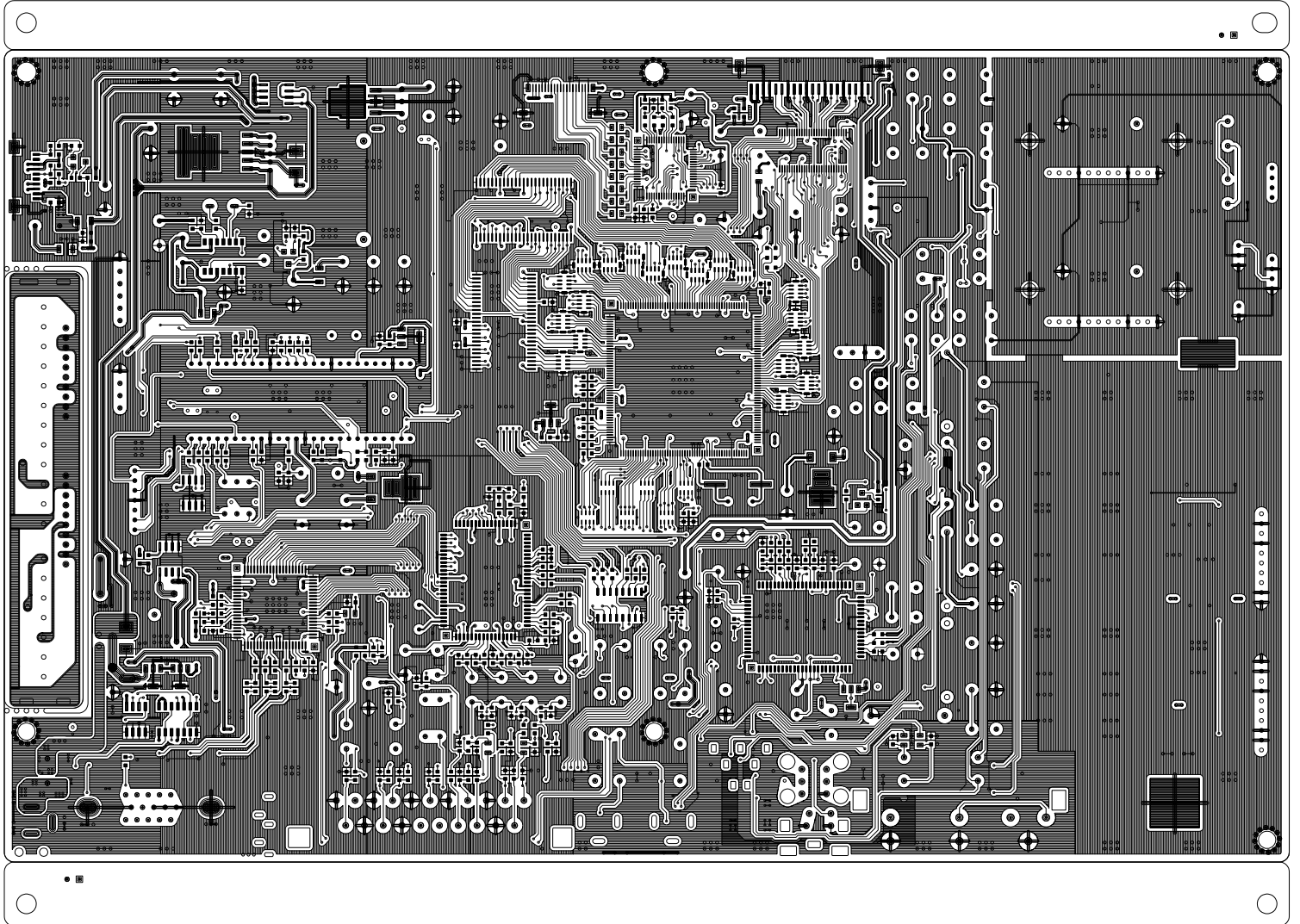
PCB LAYOUT

3.1 Main PCB



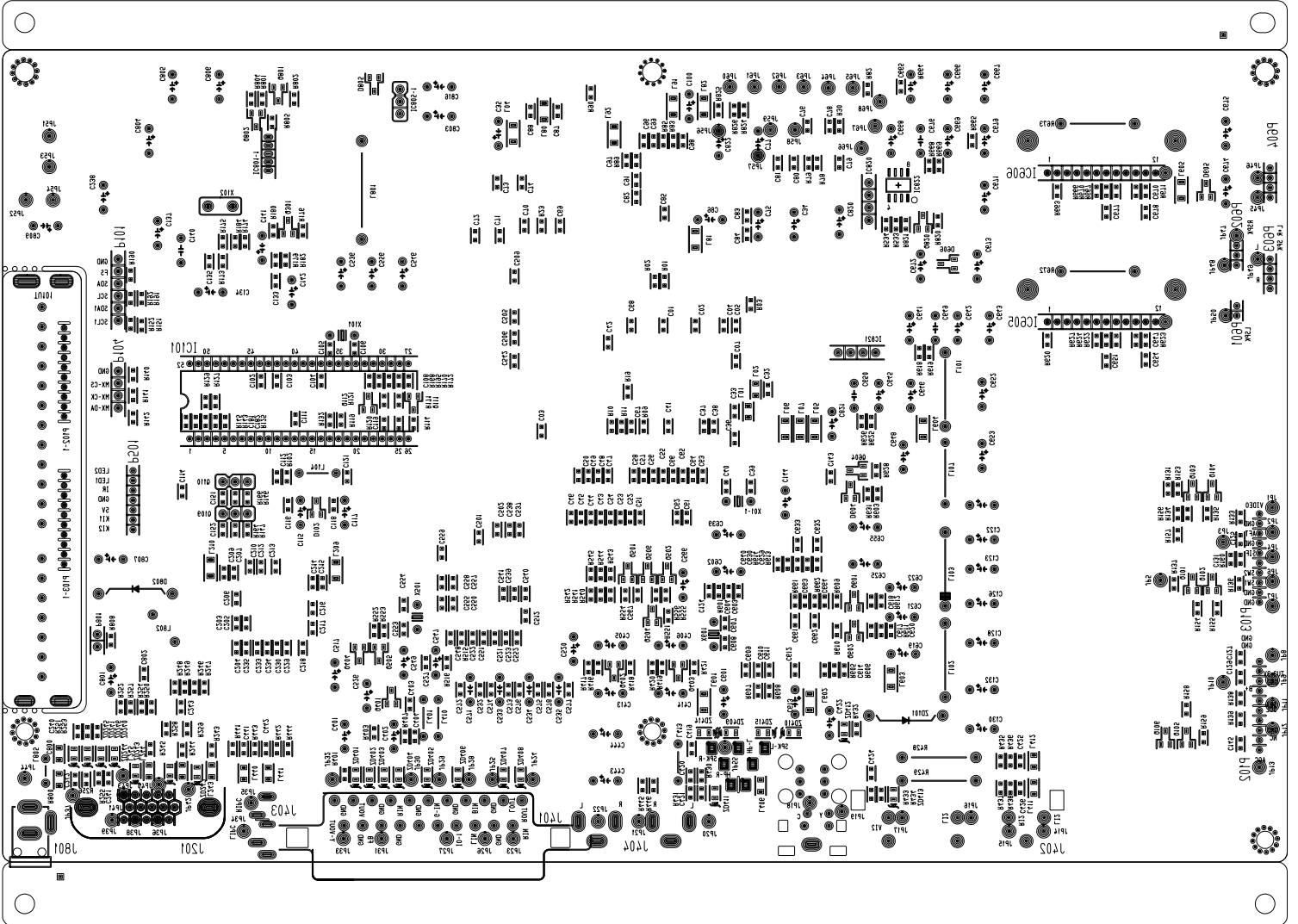
PCB LAYOUT

3 - 2. Main PCB



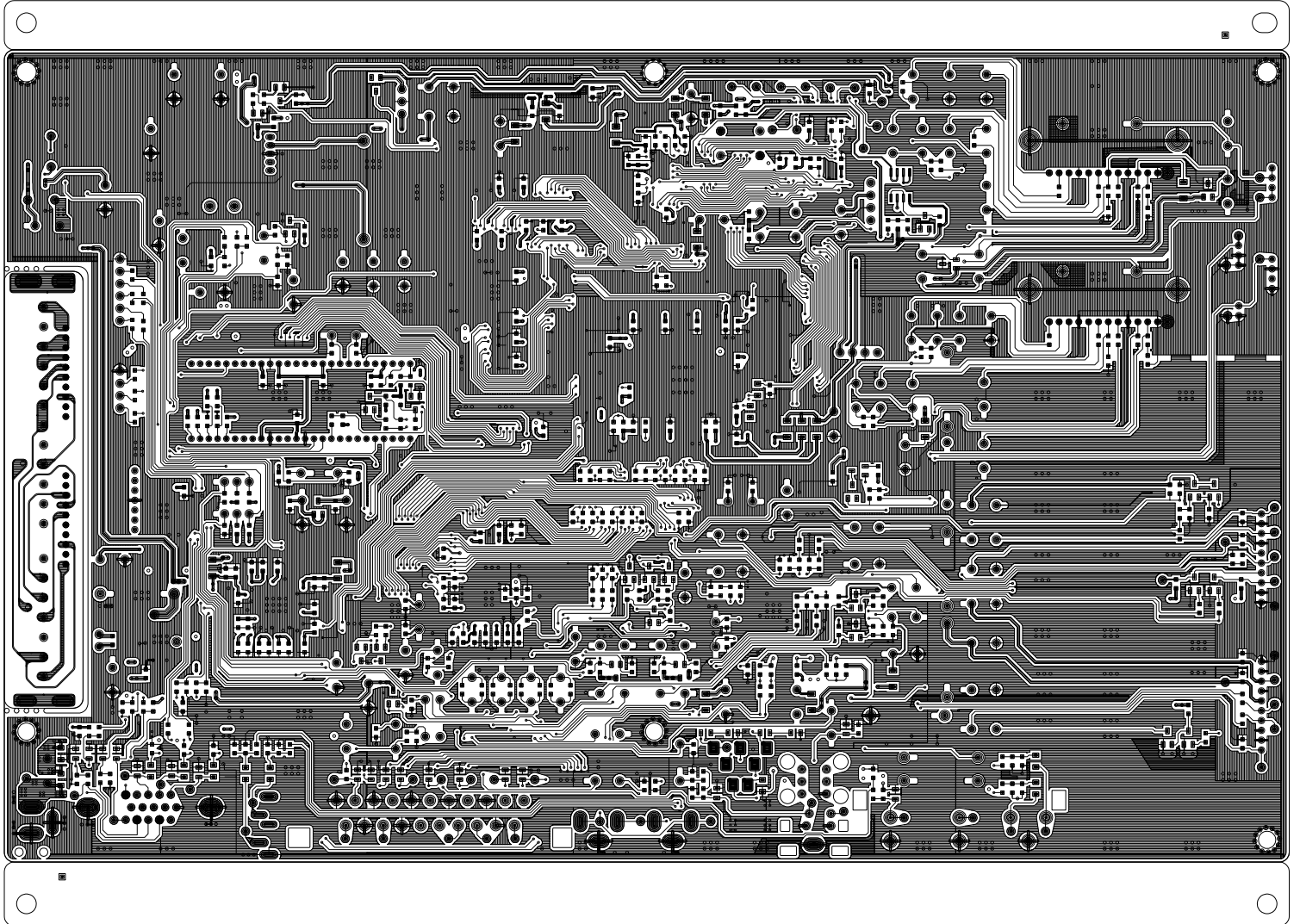
PCB LAYOUT

3 - 3. Main PCB



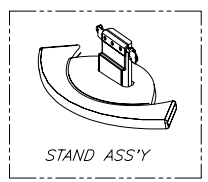
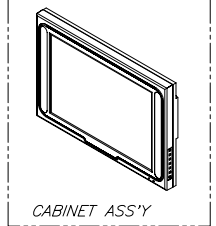
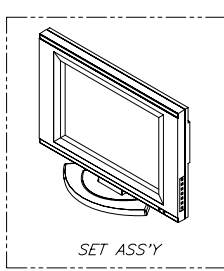
PCB LAYOUT

3 - 4. Main PCB



EXPLODED VIEW

QTY	No.	DESCRIPTION	MATERIAL	COLOR FINISH	QTY	TORQUE(Ngf.cm)	
						OPEN	CLOSE
	1	FRONT BODY	ABS/HP(S/VO)	SPRAY, SILVER	1		
	2	DECO COVER(TOP)	ACRYL	CHROME COATING	1		
	3	DECO COVER(BOTTOM)	ACRYL	CHROME COATING	1		
	4	LED PCB	-	-	1		
	5	CONTROL KEY	-	-	1		
	6	CONTROL KNOB	ABS+HD	CHROME COATING	1		
	7	SCREW TAPPING	TTB 3*10	SZN	5		
	8	CONTROL PLATE	PVC, t=0.3	SILVER	1		
	9	TFT LCD	-	LGPL	1		
	10	SHIELD FRONT	EGL, t=1.2	-	1		
	11	SCREW MACHINE	FB 3*6	SZN	4		
	12	SCREW TAPPING	TTB 3*12	SZN	8		
	13	SCREW TAPPING	BTB 4*12	SZN	4		
	14	SPEAKER	-	-	2		
	15	SCREW TAPPING	TTB 3*12	SZN	8		
	16	MAIN BOARD	-	-	1		
	17	INVERTER	-	-	1		
	18	SCREW MACHINE	FTB 3*6 (WHITE)	SZN	8		
	19	SHIELD REAR	EGL, t=0.8	-	1		
	20	SCREW MACHINE	FTB 3*6 (WHITE)	SZN	4		
	21	SHIELD JACK	SPTH, t=0.3	-	1		
	22	SCREW MACHINE	FTB 3*6	SZN	4		
	23	REAR BODY	ABS/HP(S/VO)	SPRAY, M/GRAY	1		
	24	SCREW TAPPING	BTB 4*12	SZN	6		
	25	REAR PLATE	PVC, t=0.3	BLACK	1		
	26	STAND FRONT	ABS/HP(S/VO)	SPRAY, SILVER	1		
	27	BRKT STAND	EGL, t=2.0	-	1		
	28	SCREW TAPPING	TTB 3*12	SZN	2		
	29	STAND BOTTOM	ABS/HP(S/VO)	SPRAY, SILVER	1		
	30	BRKT BOTTOM	EGL, t=2.0	WHITE ZN COATING	1		
	31	SCREW TAPPING	FBTB 4*8	SZN	4		
	32	SCREW MACHINE	FS 3*8	SZN	2		
	33	HINGE ASS'Y	-	-	1		
	34	SCREW MACHINE	FB 4*8	SZN	3		
	35	STAND REAR	ABS/HP(S/VO)	SPRAY, SILVER	1		
	36	SCREW TAPPING	BTB 4*12	SZN	2		
	37	HINGE CAP(L)	ABS/HP(S/VO)	SPRAY, SILVER	2		
	38	SCREW MACHINE	FS 4*12	SZN	4		



SYM	ZONE	DESCRIPTION	DATE	REVISED	APPROVED
1					
2					

WELD MARKER		INJECTION MARKER	
DATE	11.26	TITLE	SET ASS'Y
DRW	LEE D.B	DRW	LEE D.B
UNIT	mm	APPD	DRAWING NO.
MODEL	LT117F	APPD	1-03-050
		SCALE	N/S
		SHEETS	1/1