

TMATC 3527

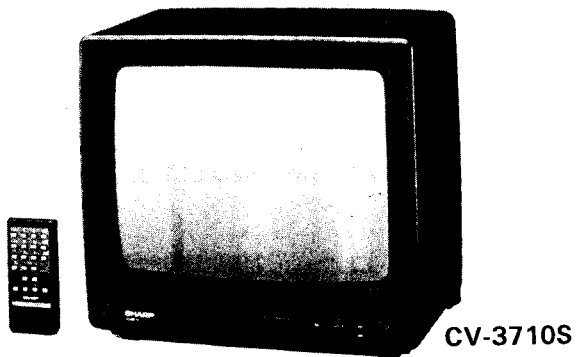
(29) DU

CV-3710S(BK)/(W)
CV-3710G(BK)/(W)

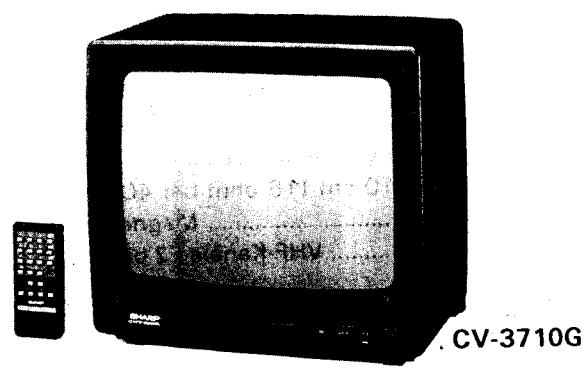
SHARP SERVICE MANUAL SERVICE-ANLEITUNG

S88G6CV3710SG

8P-SR CHASSIS



CV-3710S



CV-3710G

PAL SYSTEM COLOUR TELEVISION
PAL SYSTEM FARBFERNSEHGERÄT

MODELS/MODELL

CV-3710S(BK)/(W)

SECAM/PAL SYSTEM COLOUR TELEVISION
SECAM/PAL SYSTEM FARBFERNSEHGERÄT

MODELS/MODELL

CV-3710G(BK)/(W)

The lastletter of the model name on the catalog, packing case, etc. indicates the colour of the product.
(BK): Black (W): White

Die am Ende der Modellnummer in Klammern gesetzten Buchstaben—auf dem Katalog, Verpackungskarton usw.—entsprechen den Gehäusefarben.
(BK): Schwarz (W): Weiß

In the interests of user-safety (Required by safety regulations in some countries) the set should be restored to its original condition and only parts identical to those specified should be used.

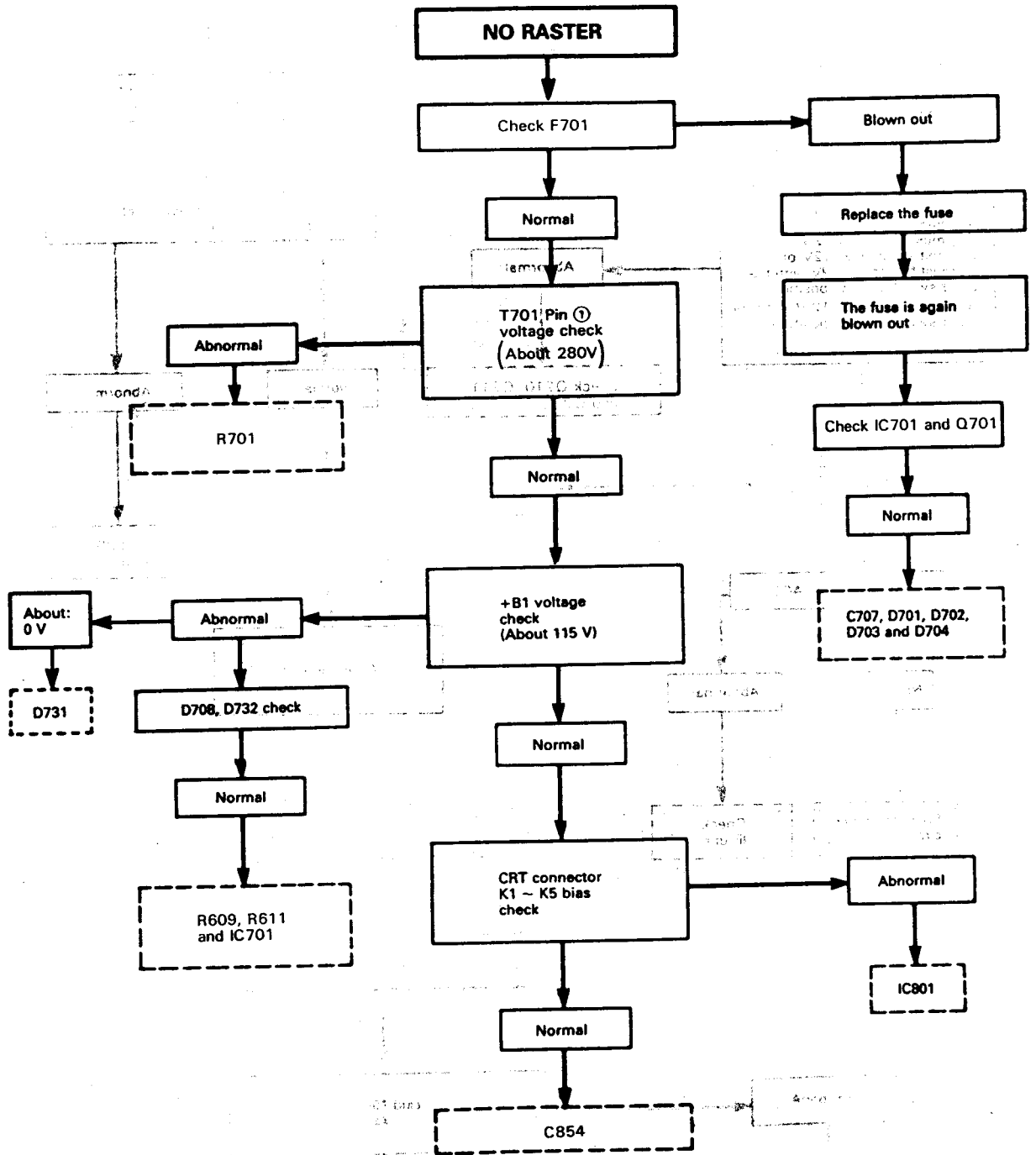
Im Interesse der Benutzer-Sicherheit (in einigen Länder durch Sicherheitsvorschriften gefordert) sollte dieses Gerät wieder auf seinen ursprünglichen Zustand eingestellt und nur die vorgeschriebenen Teile verwendet werden.

CONTENTS

INHALT

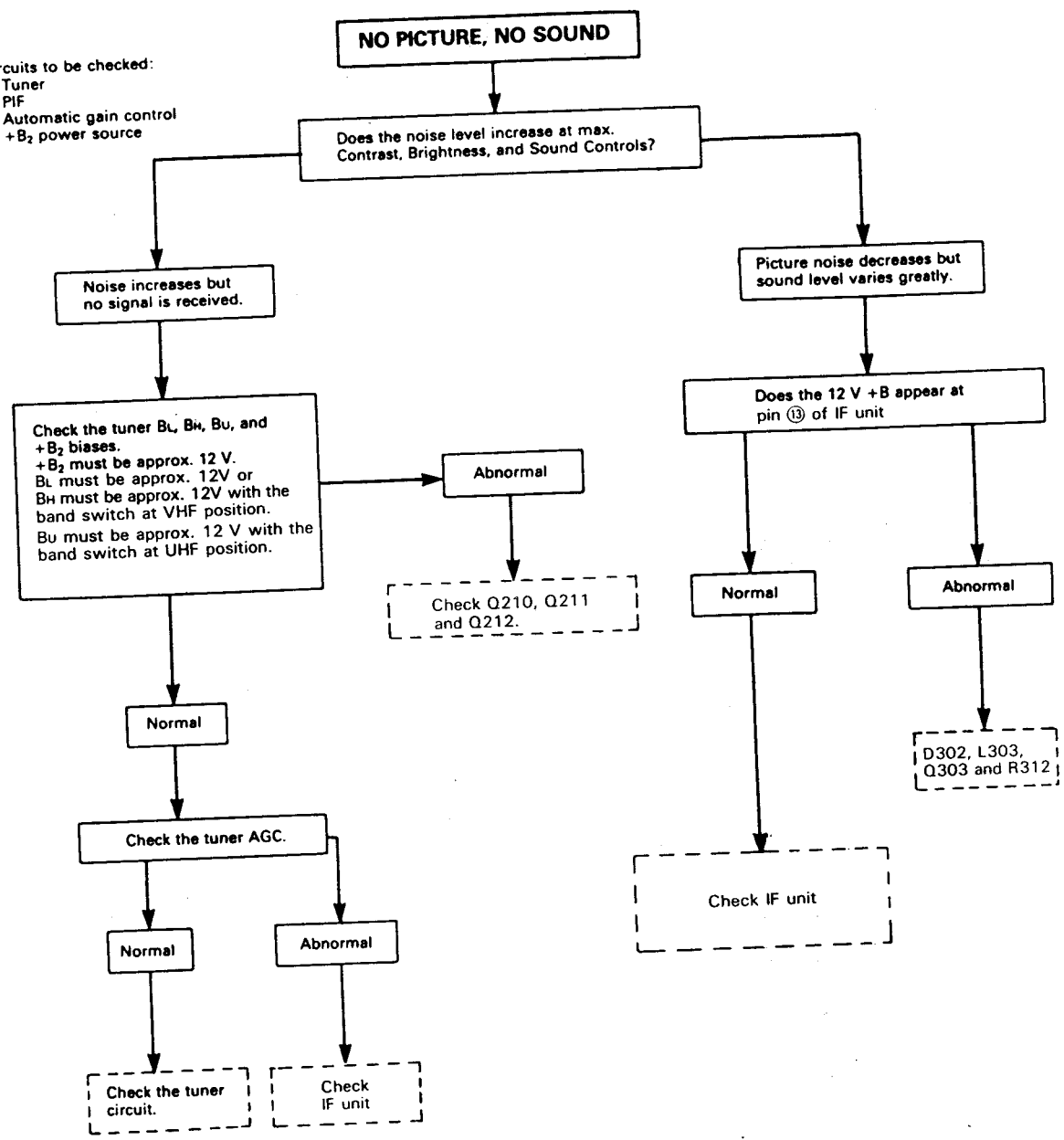
	Page		Seite
• ELECTRICAL SPECIFICATIONS	2	• TECHNISCHE DATEN	2
• IMPORTANT SERVICE NOTES	3	• WICHTIGE SERVICE-HINWEISE	15
• SERVICE ADJUSTMENT	4	• SERVICE-EINSTELLUNG	16
• TROUBLESHOOTING TABLE	11	• FEHLERSUCHTABELLE	23
• CHASSIS LAYOUT DIAGRAM	27	• CHASISANORDNUNGSPLAN	27
• PRINTED WIRING BOARD ASSEMBLIES	29	• LEITERPLATTENEINHEITEN	29
• SCHEMATIC DIAGRAMS AND WAVEFORMS	32	• SCHEMATISCHERSCHALTPLAN UND WELLENFORMEN	32
• BLOCK DIAGRAM	41	• BLOCKSCHALTPLAN	45
• REPLACEMENT PARTS LIST	49	• ERSATZTEILLISTE	49

TROUBLESHOOTING TABLE



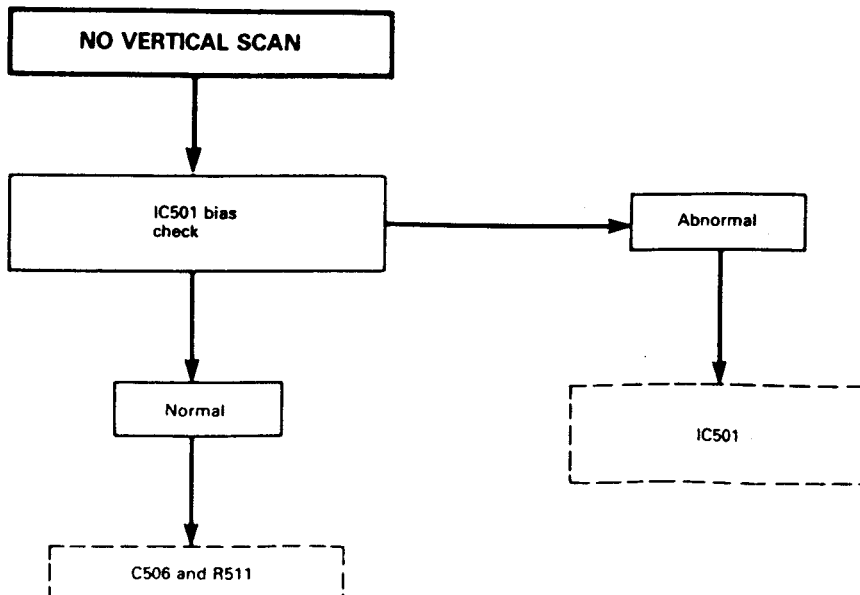
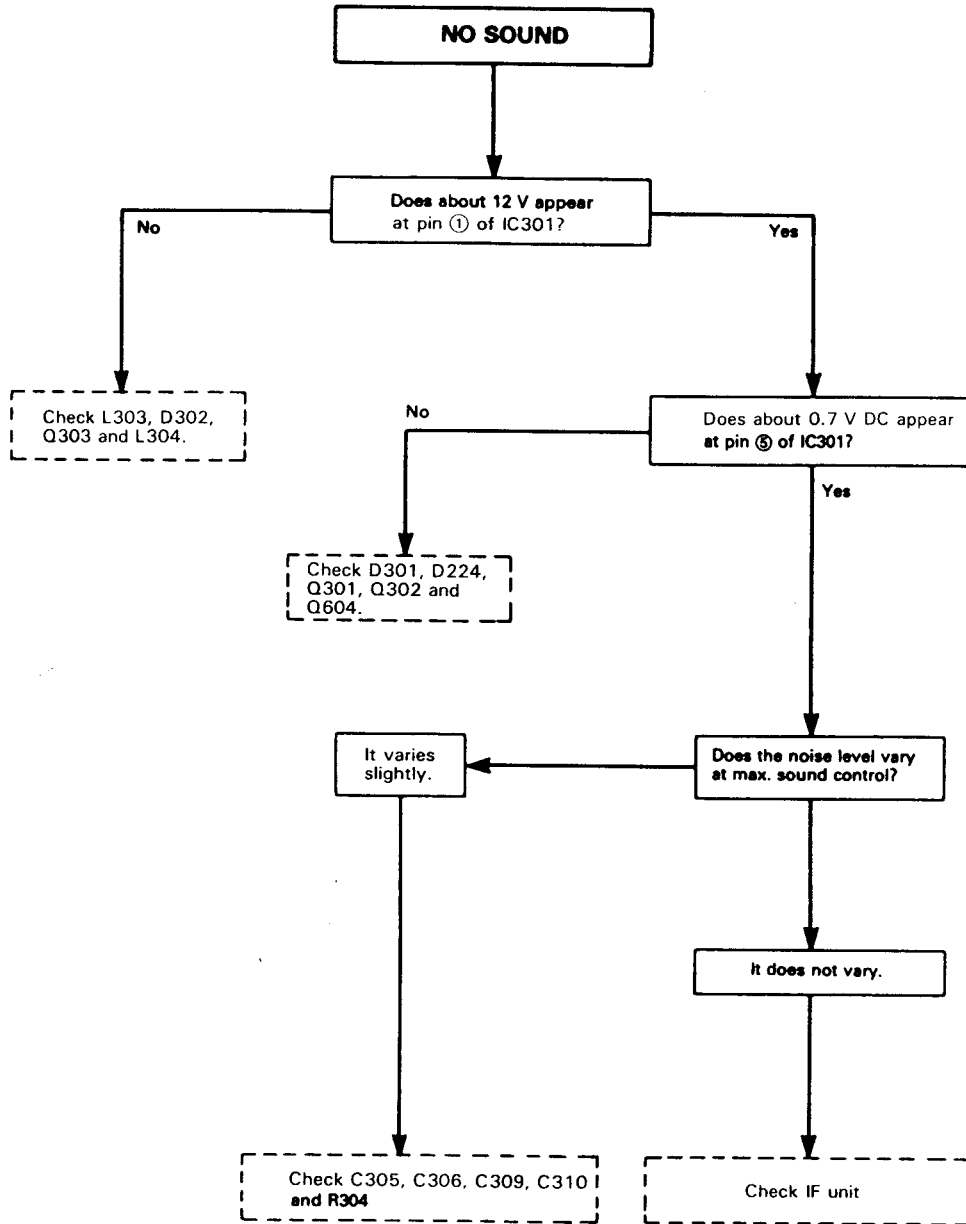
V-3710S(BK)/(W)
 V-3710G(BK)/(W)

- Circuits to be checked:
- Tuner
 - PIF
 - Automatic gain control
 - +B₂ power source

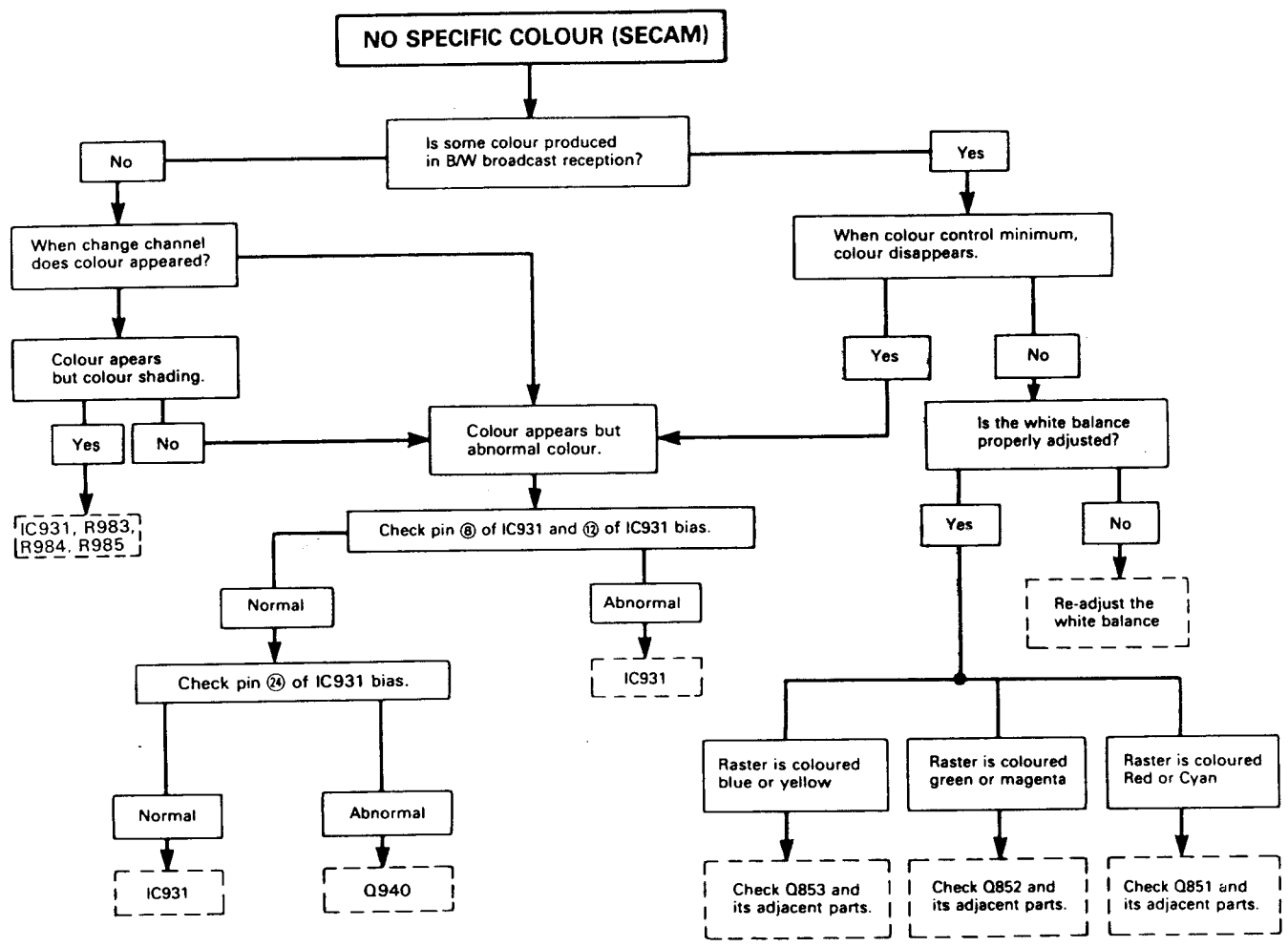


RTV servis Horvat
 Kešinci, 31402 Semeljci
 Tel : 031-856-637
 Tel / fax : 031-856-139
 Mob : 098-788-319
rtv-servis-horvat@os.tel.hr

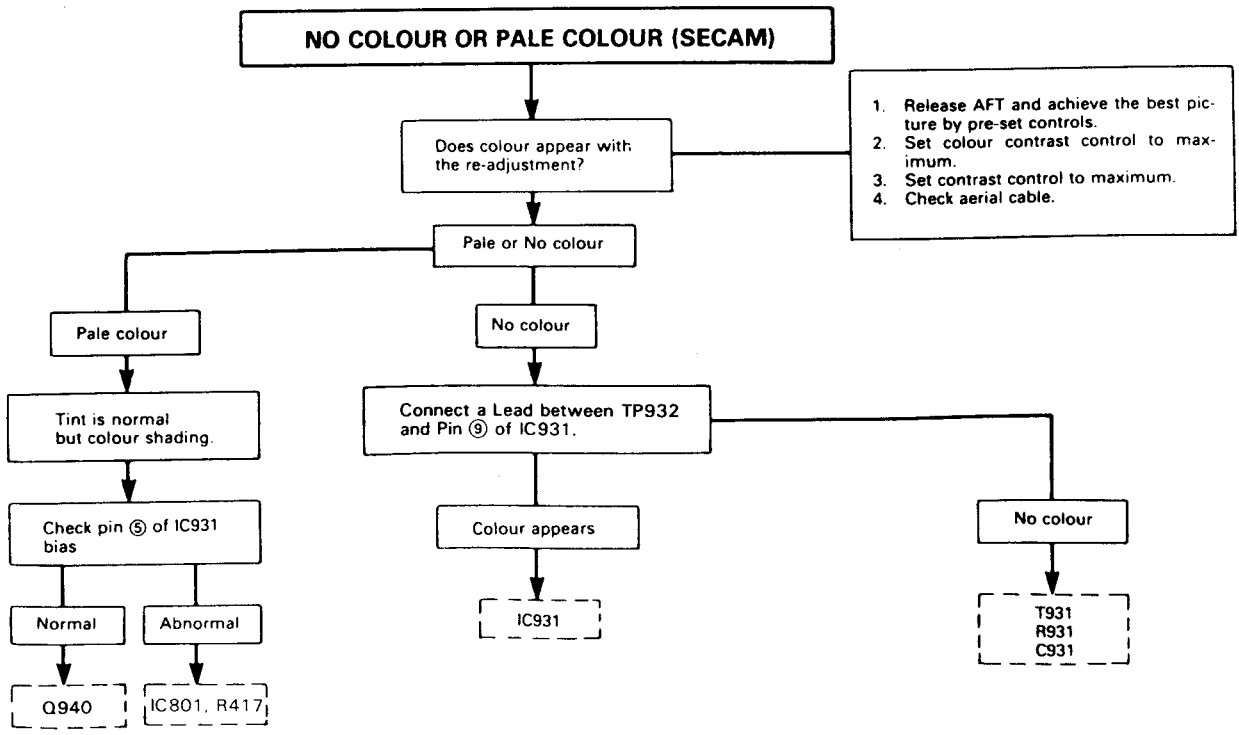
- Circuit to be checked:
- SIF Amplifier circuit
 - Sound DET
 - Audio output circuit
 - Muting circuit



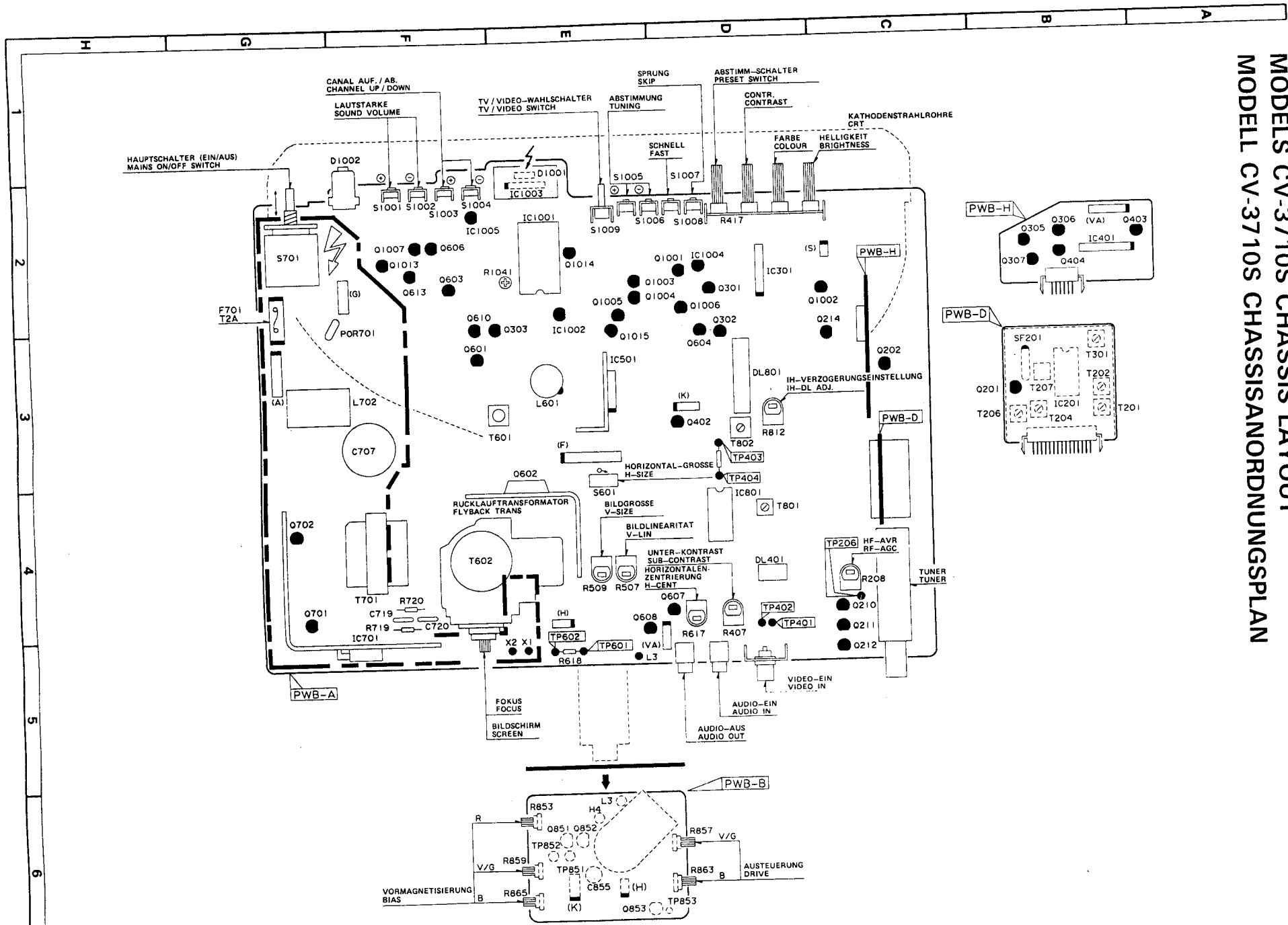
• CV-3710G only



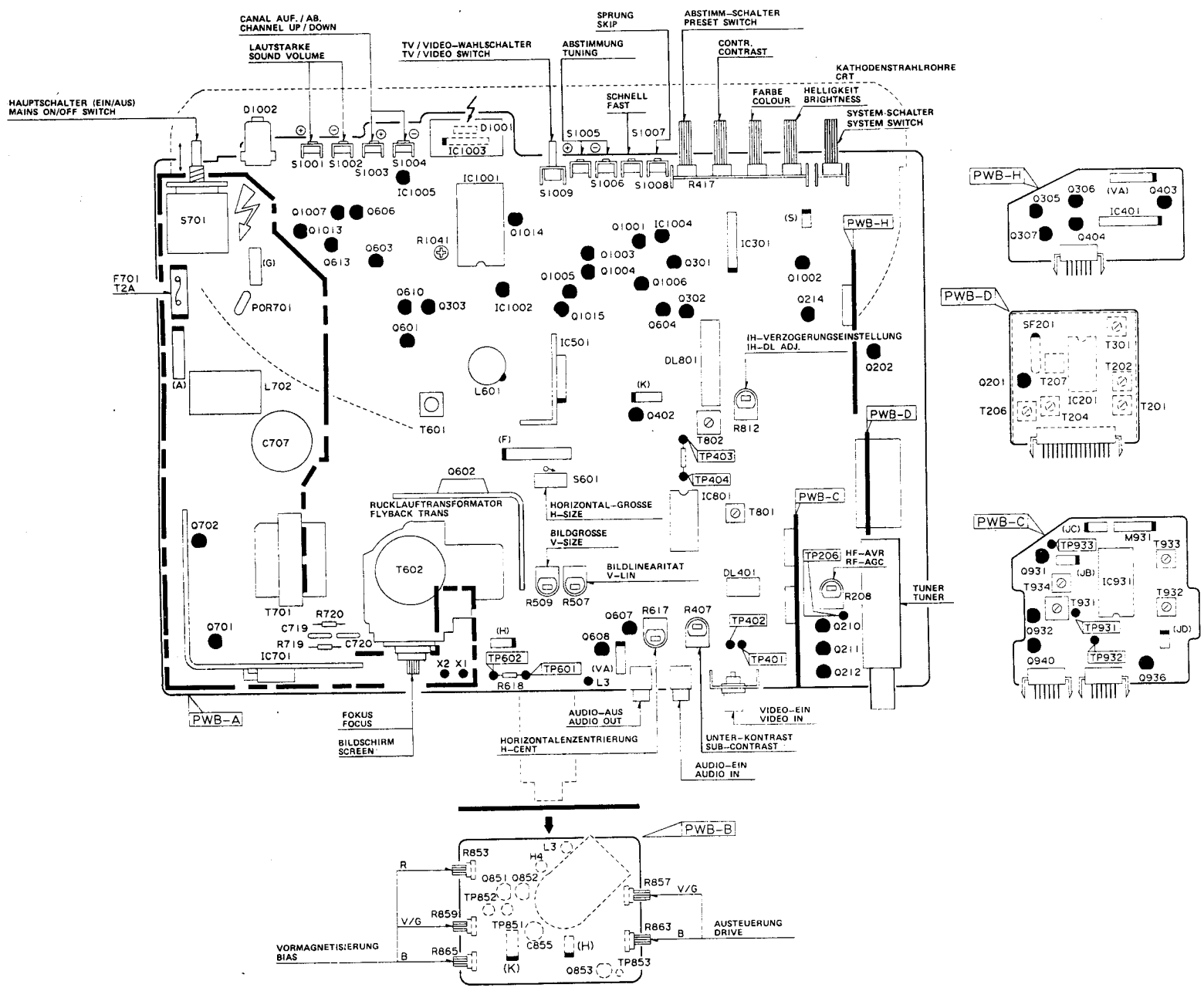
• CV-3710G only



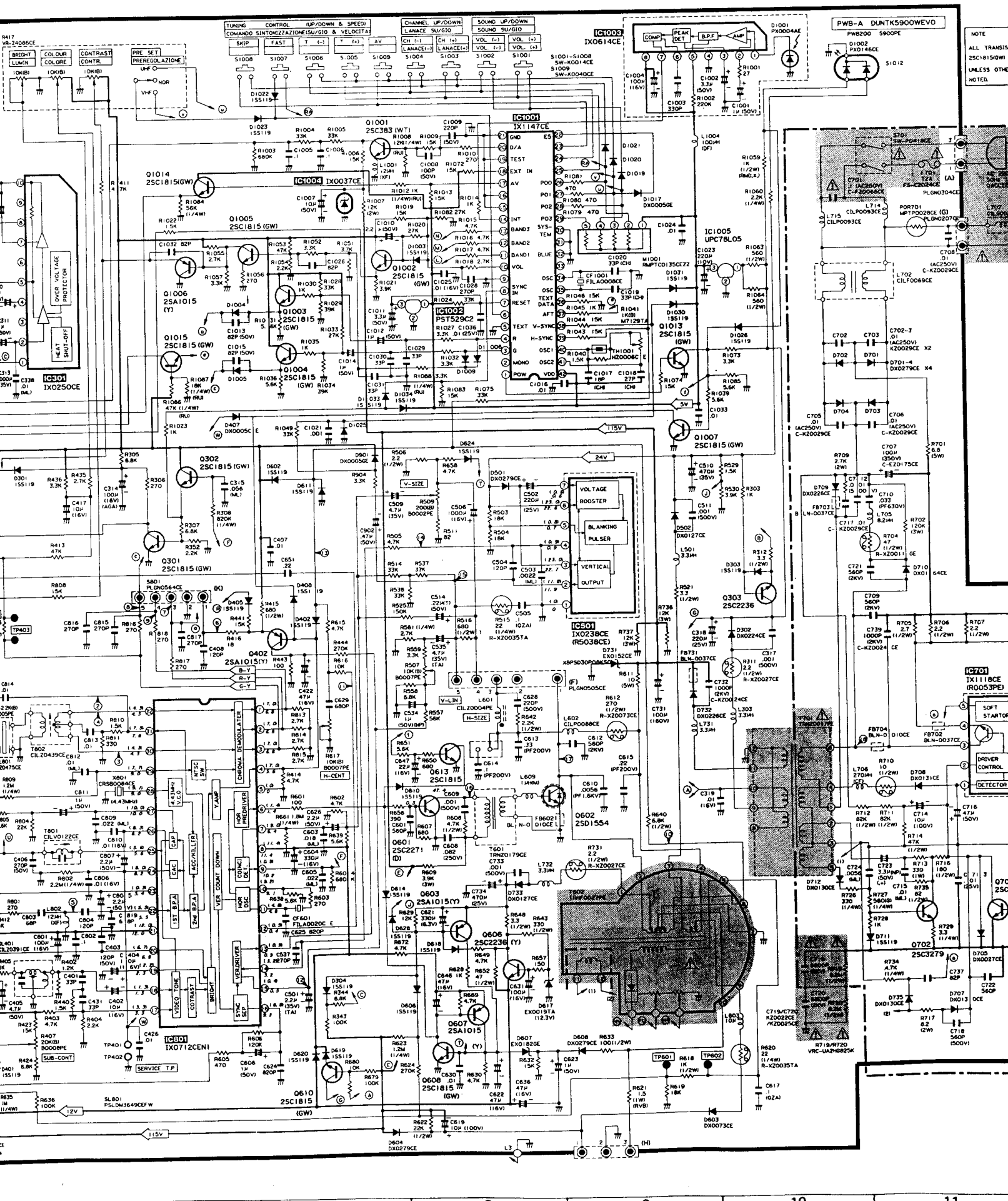
MODELS CV-3710S CHASSIS LAYOUT
 MODELL CV-3710S CHASSISANORDNUNGSPLAN



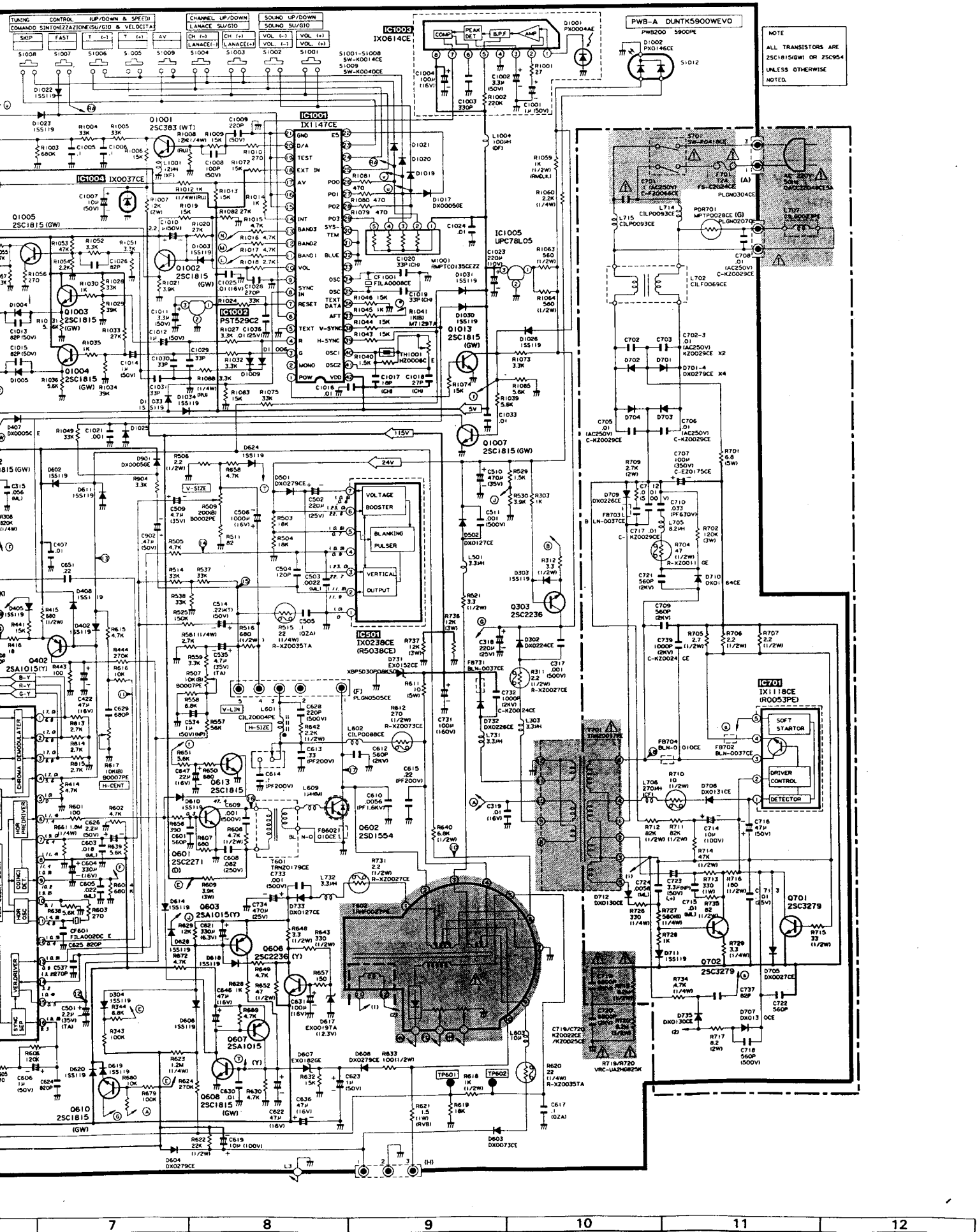
MODELS CV-3710G CHASSIS LAYOUT
MODELL CV-3710G CHASSISANORDNUNGSPLAN



SCHEMATISCHER SCHALTPLAN



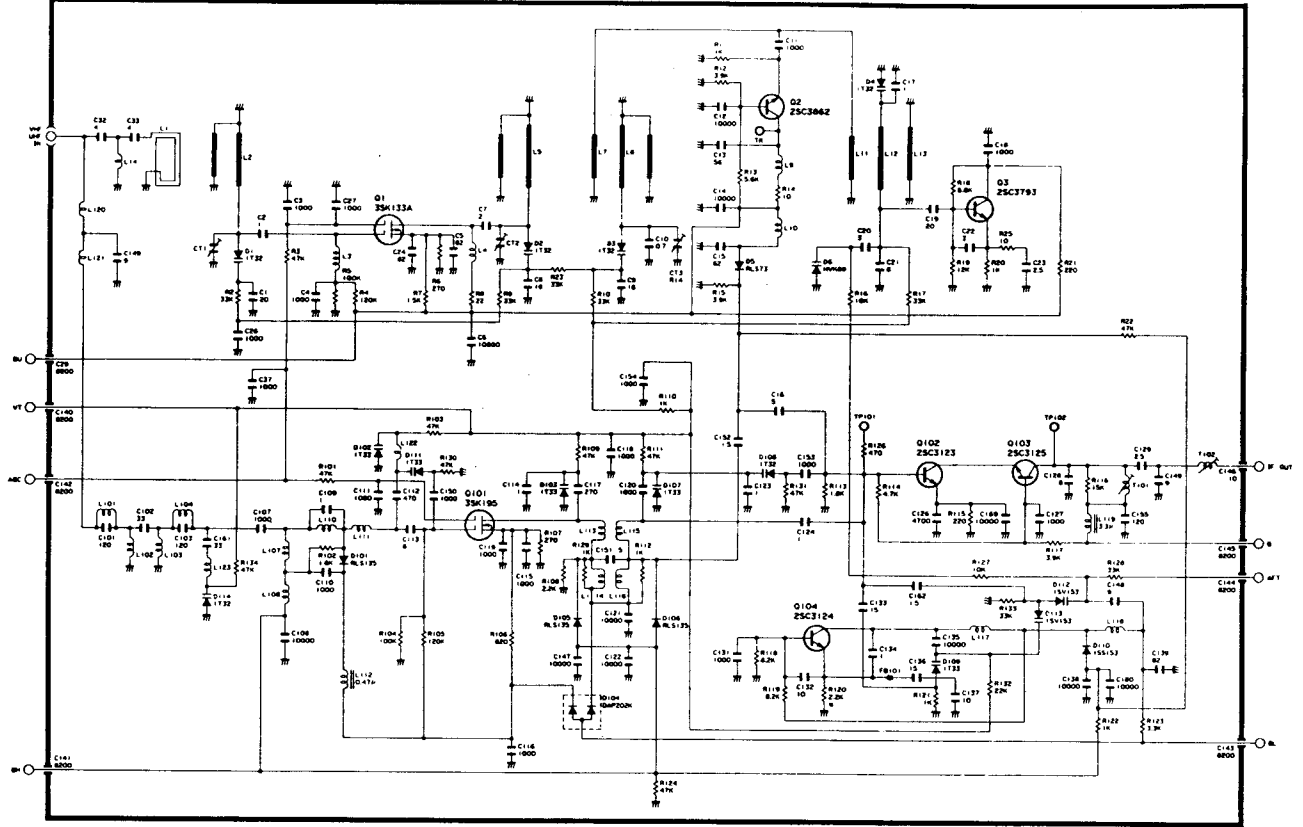
SCHALTPLAN



NOTE
ALL TRANSISTORS ARE
2SC1815(GW) OR 2SC954
UNLESS OTHERWISE
NOTED.

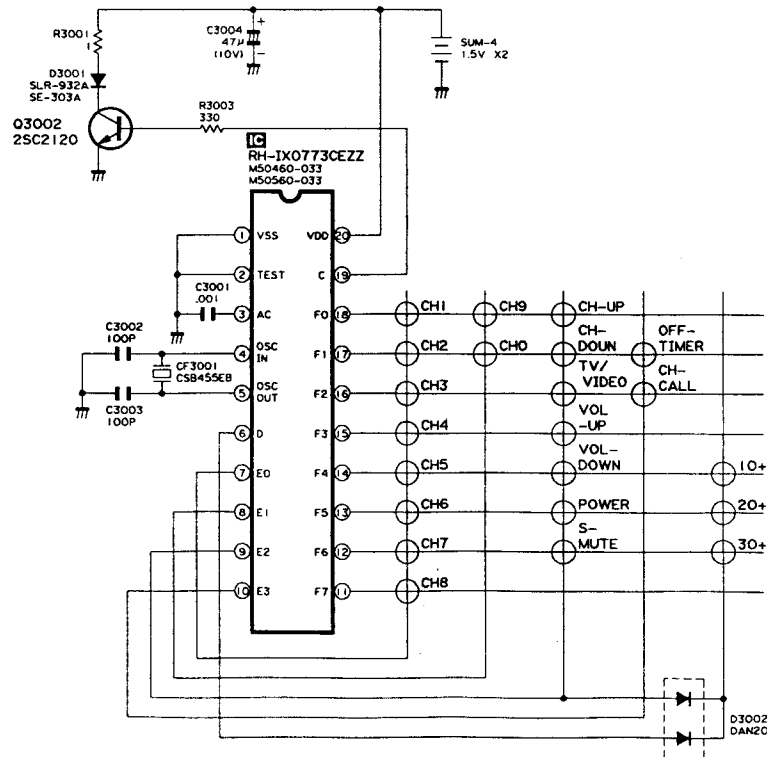
VTUVTSA1S////

TUNER



INFRARED R/C TRANSMITTER SCHEMATIC DIAGRAM
 INFRAROTFERNBEDIENUNG SCHEMATISCHEN SCHALTPLAN

RRMCG0568PESA



WAVEFORMS/WELLENFORMEN

① 1.5 Vp-p (H)	② 0.54 Vp-p (H)	③ 0.13 Vp-p (H)	④ 0.17 Vp-p (H)	⑤ 0.58 Vp-p (H)	⑥ 2.75 Vp-p (H)	⑦ 1.5 Vp-p (H)
⑧ 1.7 Vp-p (H)	⑨ 0.74 Vp-p (H)	⑩ 132 Vp-p (H)	⑪ 10.4 Vp-p (H)	⑫ 6.0 Vp-p (V)	⑬ 12.4 Vp-p (V)	⑭ 1.4 Vp-p (V)
⑮ 50 Vp-p (V)	⑯ 140 Vp-p (H)	⑰ 940 Vp-p (H)	⑱ 660 Vp-p (H)	⑲ 88 Vp-p (H)	⑳ 79 Vp-p (H)	㉑ 81 Vp-p (H)

SERVICE PRECAUTION:

The area enclosed by this line (-----) is directly connected with AC Mains Voltage. When servicing the area, connect an isolating transformer between TV receiver and AC line to eliminate hazard of electric shock.

VORSICHTSMASSREGEL BEI DER WARTUNG:

Das mit dieser Linie (-----) eingefasste Gebiet ist direkt an der Wechselspannung angeschlossen. Bei der Wartung des Gebietes einen Trenntransformator zwischen Fernsehgerät und Wechselstromnetz anschließen, um elektrische Schläge zu vermeiden.

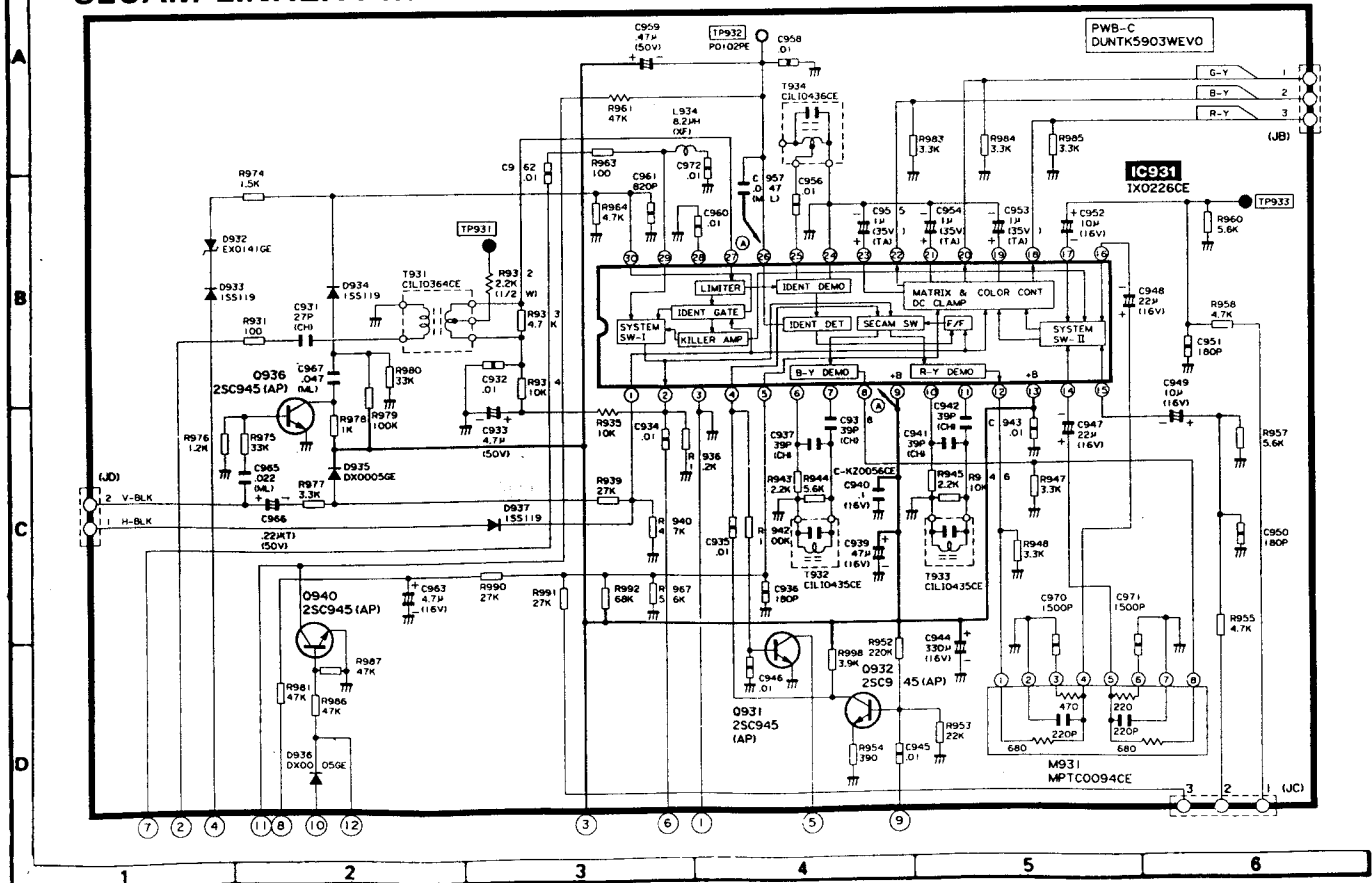
CAUTION:

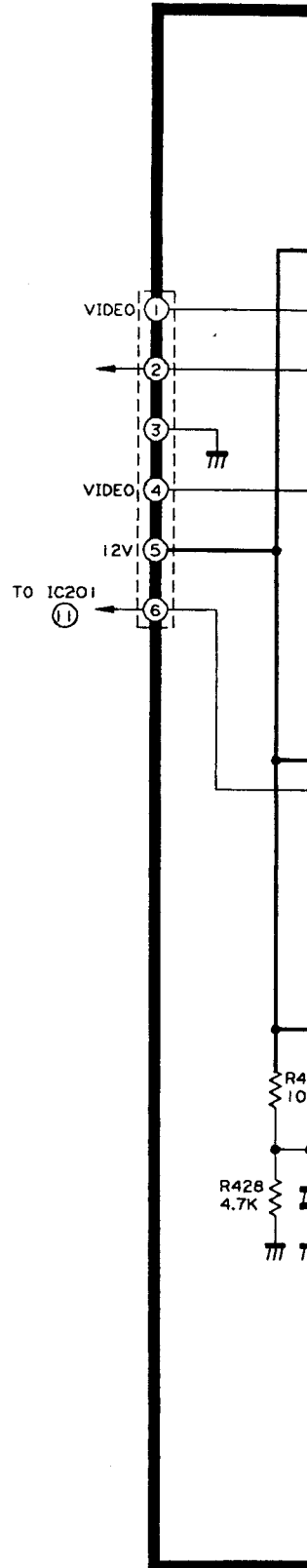
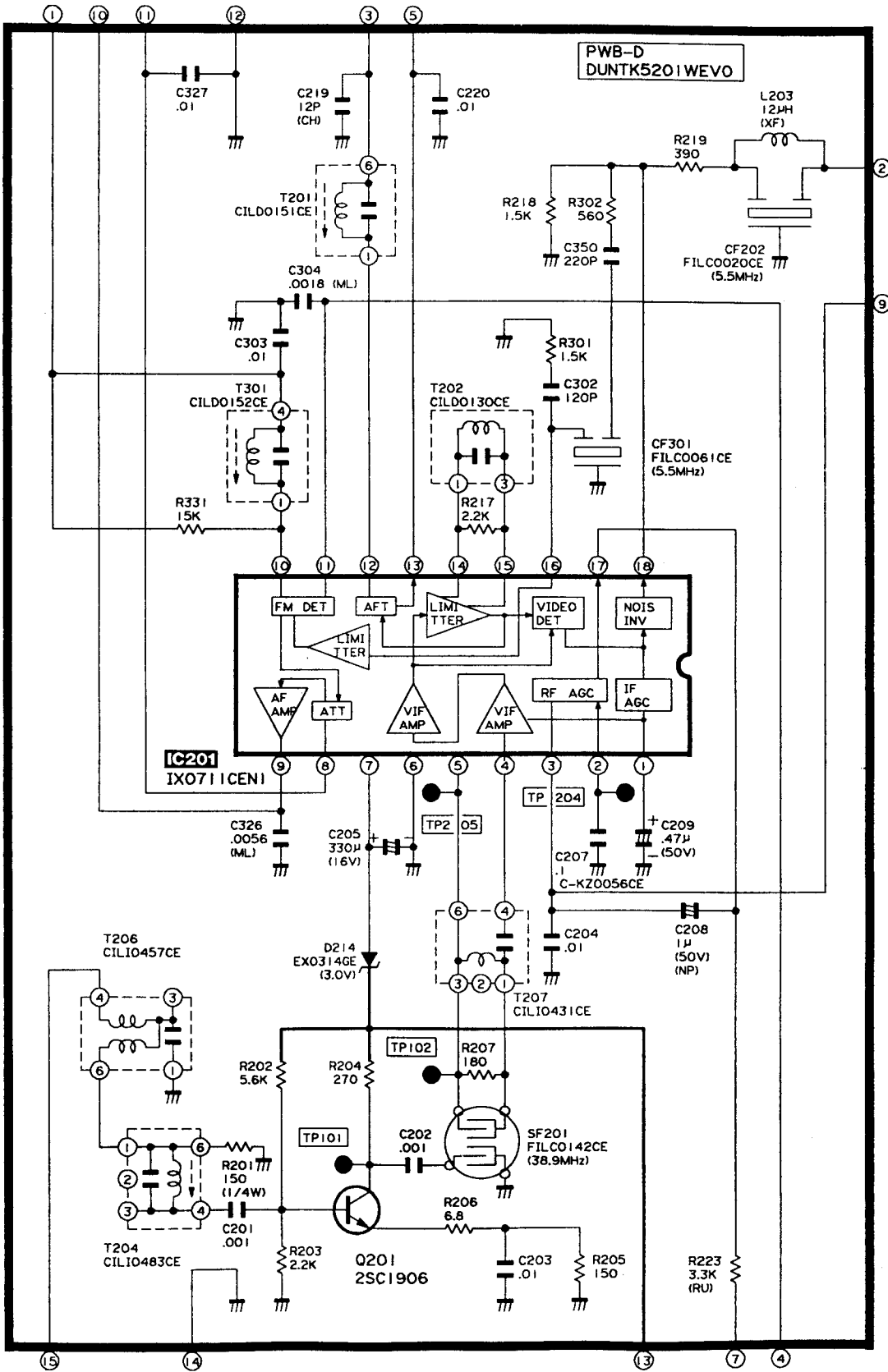
This circuit diagram is original one. Therefore there may be slight differences from yours.

ACHTUNG:

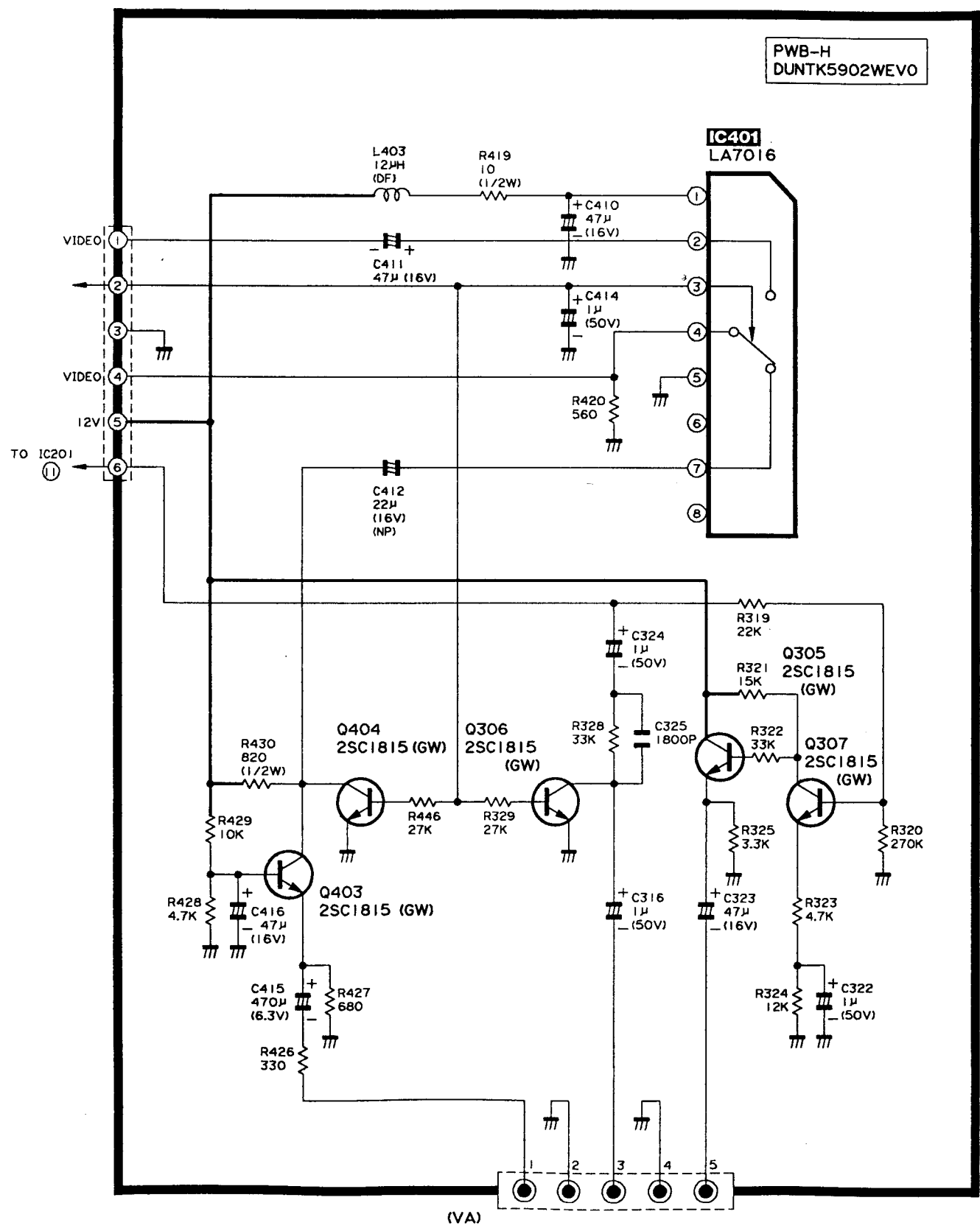
Bei diesem Schaltplan handelt es sich um den ursprünglichen. Es können daher geringfügige Unterschiede zu dem Ihrem bestehen.

SECAM UNIT: CV-3710G only SECAM EINHEIT: nur für CV-3710G

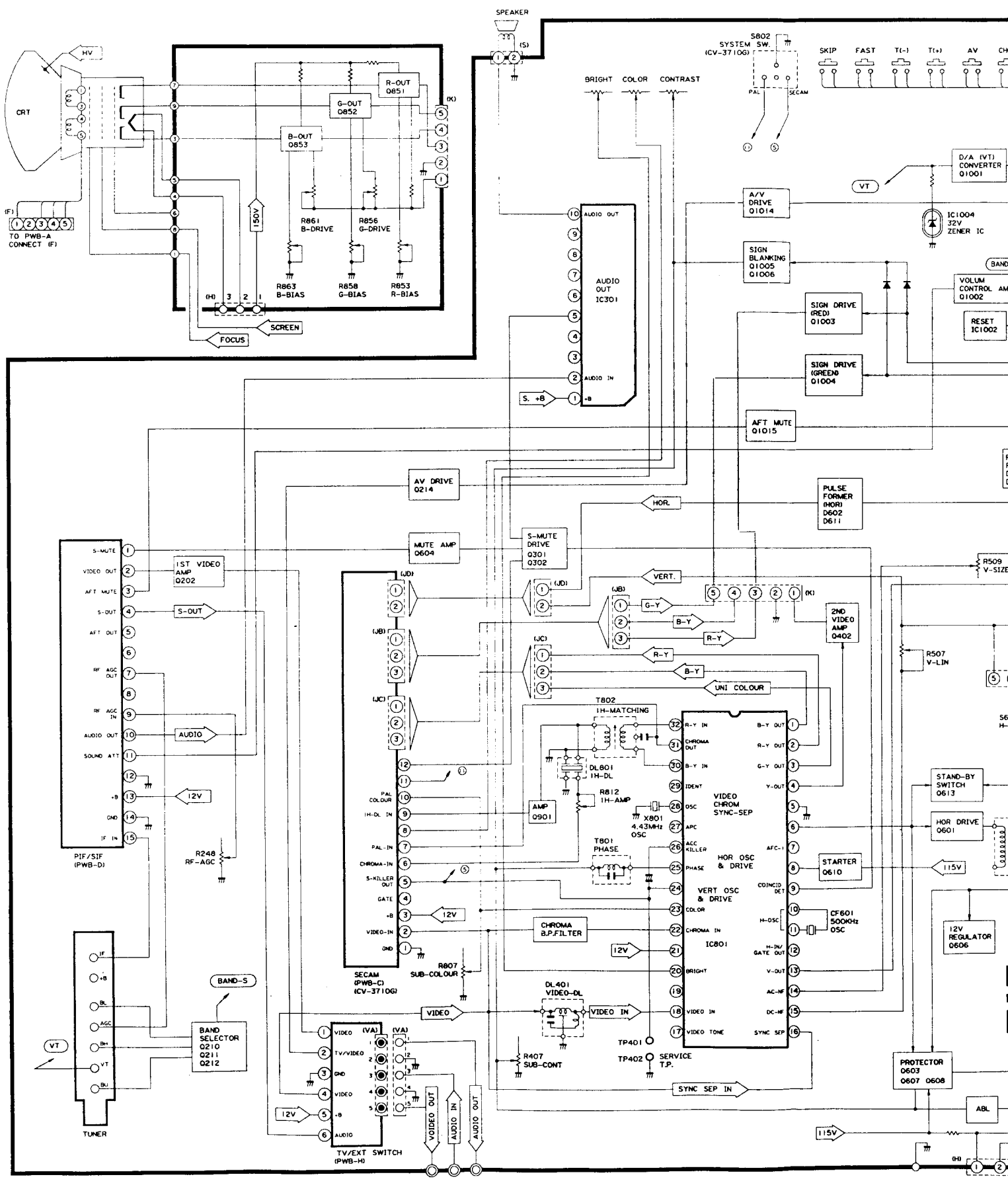




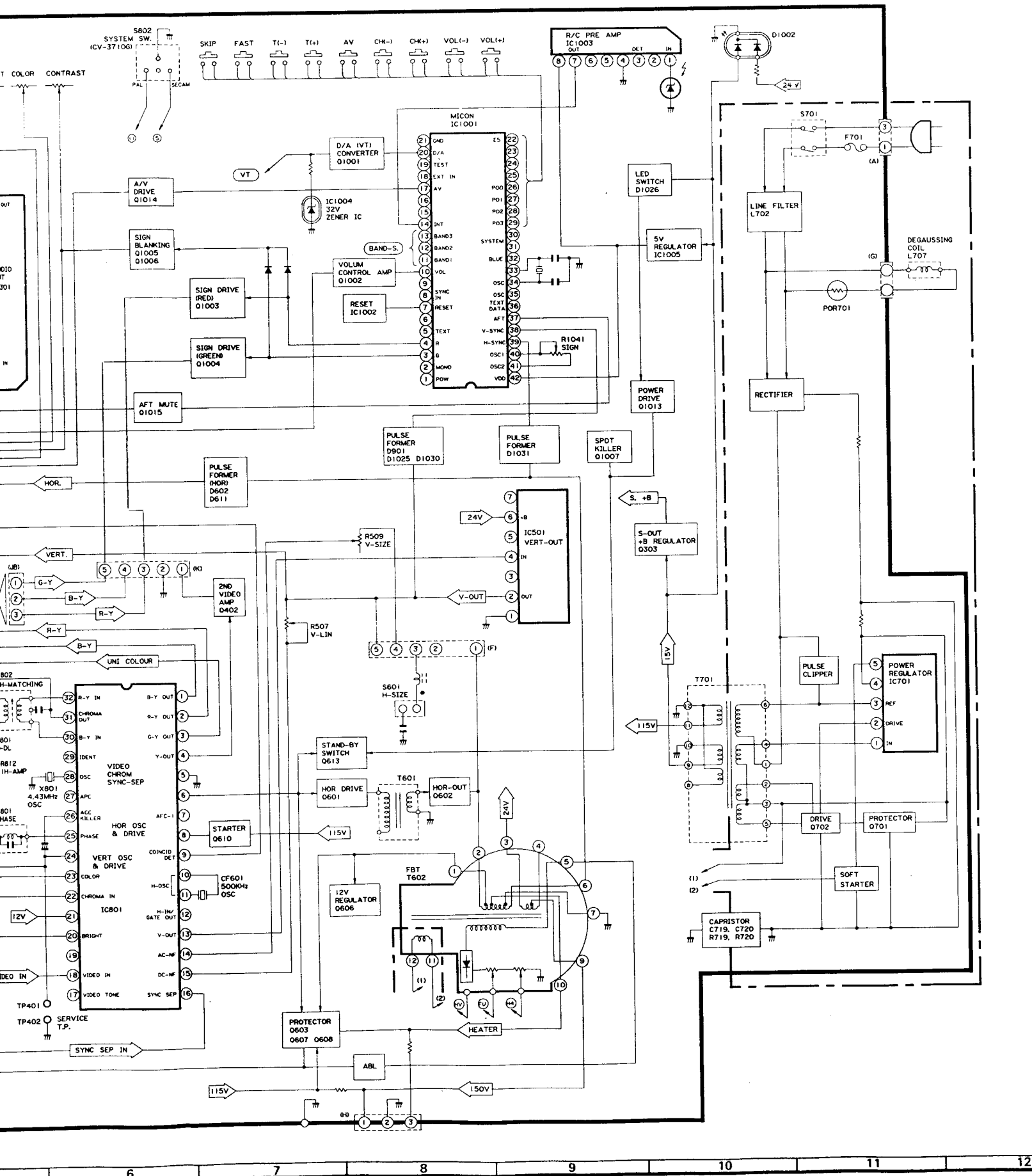
PWB-H
 DUNTK5902WEVO



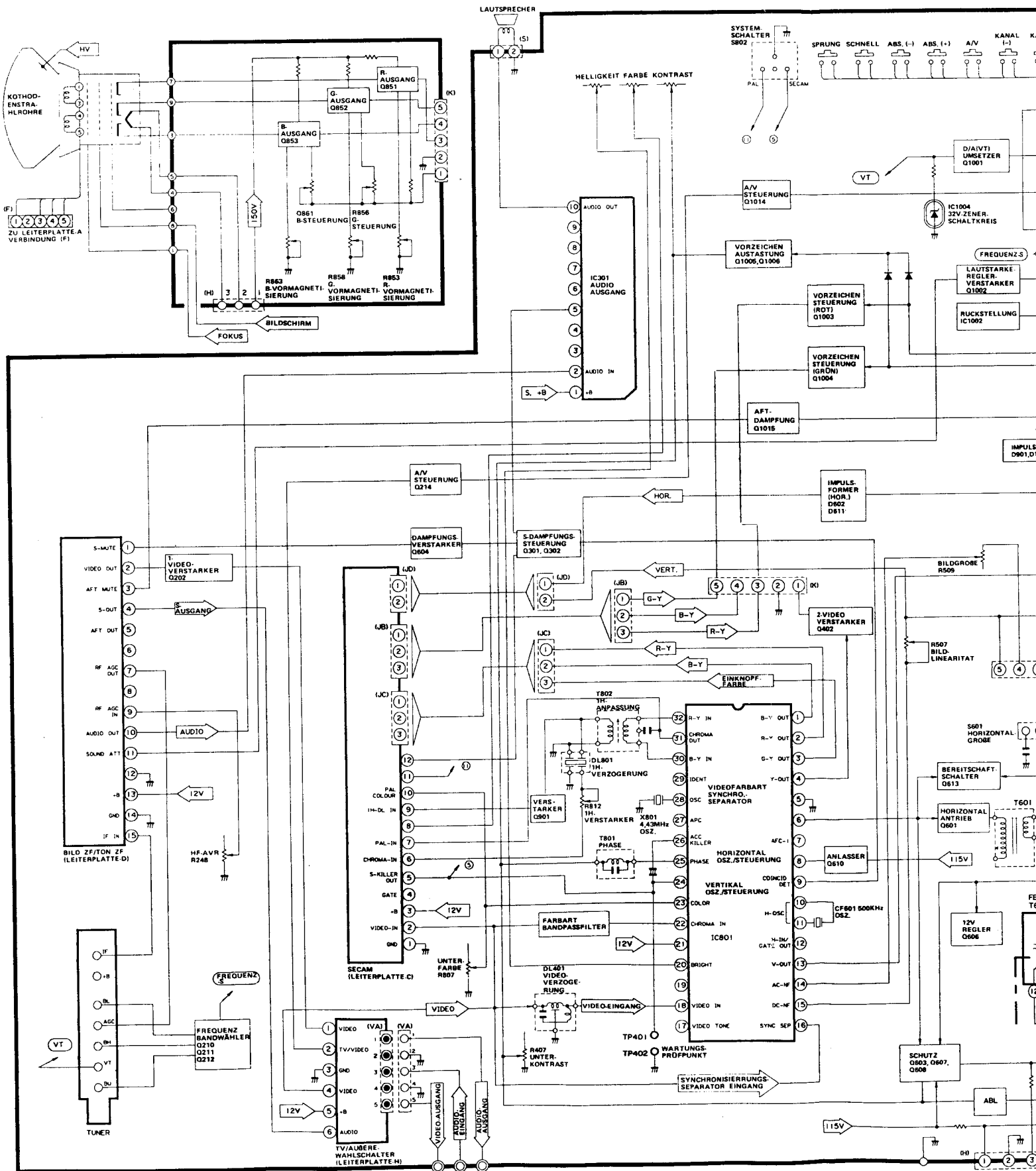
WIRING DIAGRAM

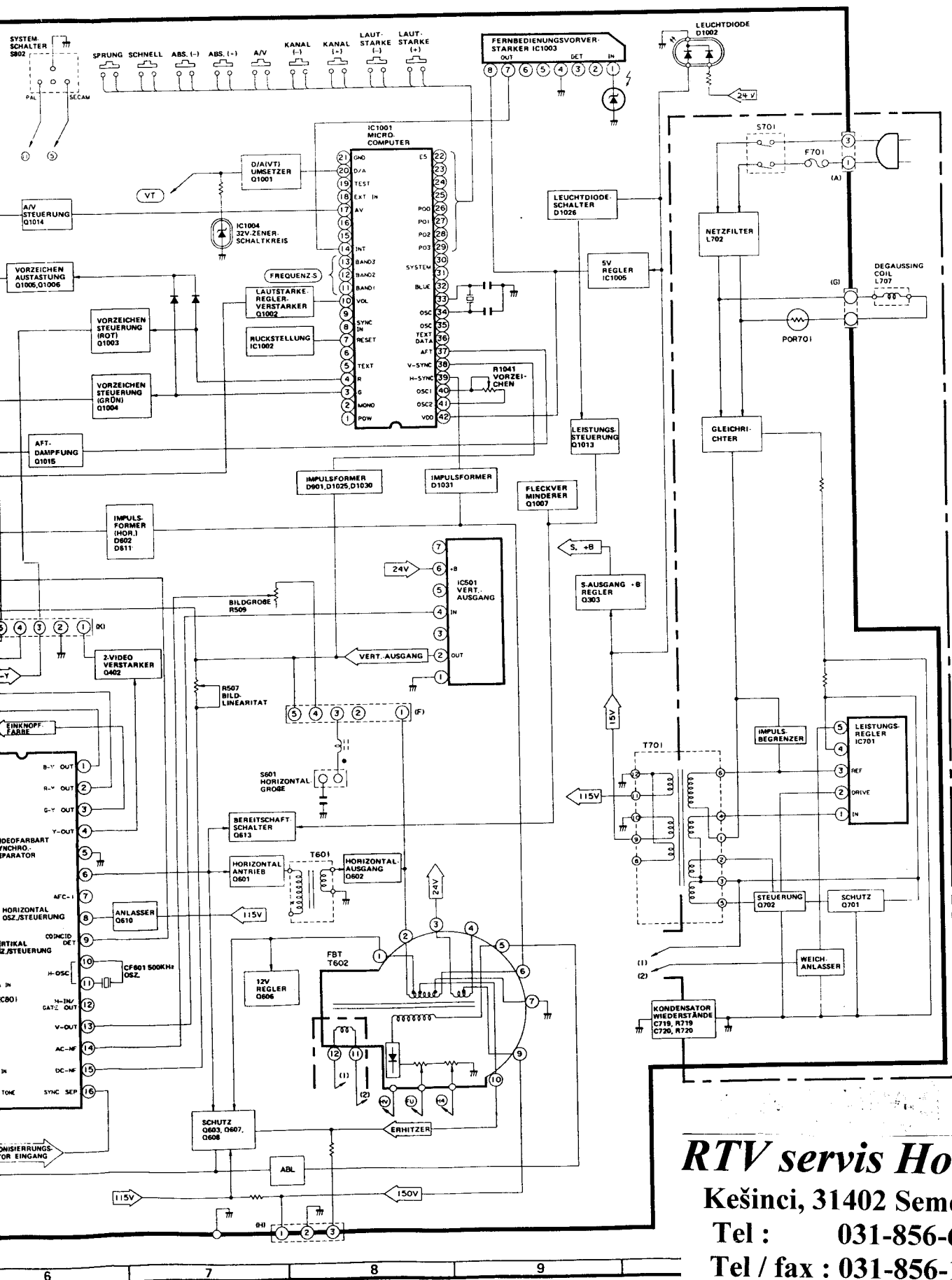


CV-3710S(BK)/(W) CV-3710S(BK)/(W)
 CV-3710G(BK)/(W) CV-3710G(BK)/(W)



DRUCKSCHALTPLAN





RTV servis Horvat

Kešinci, 31402 Semeljci

Tel : 031-856-637

Tel / fax : 031-856-139

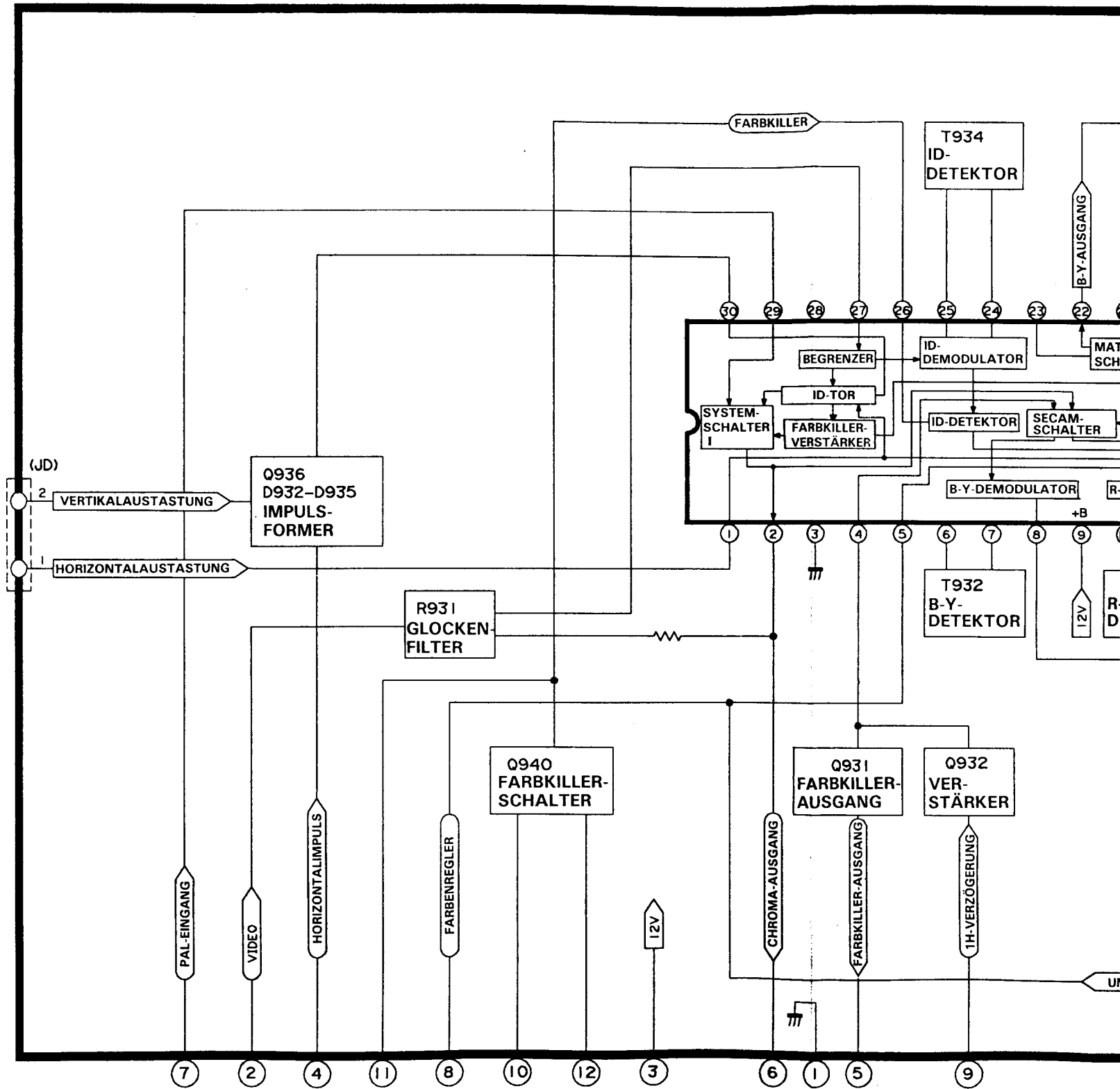
Mob : 098-788-319

rtv-servis-horvat@os.tel.hr

CV-3710S(BK)/(W)
CV-3710G(BK)/(W)

CV-3710S(BK)/(W)
CV-3710G(BK)/(W)

SECAM-EINHEIT (nur für CV-3710G)



2

3

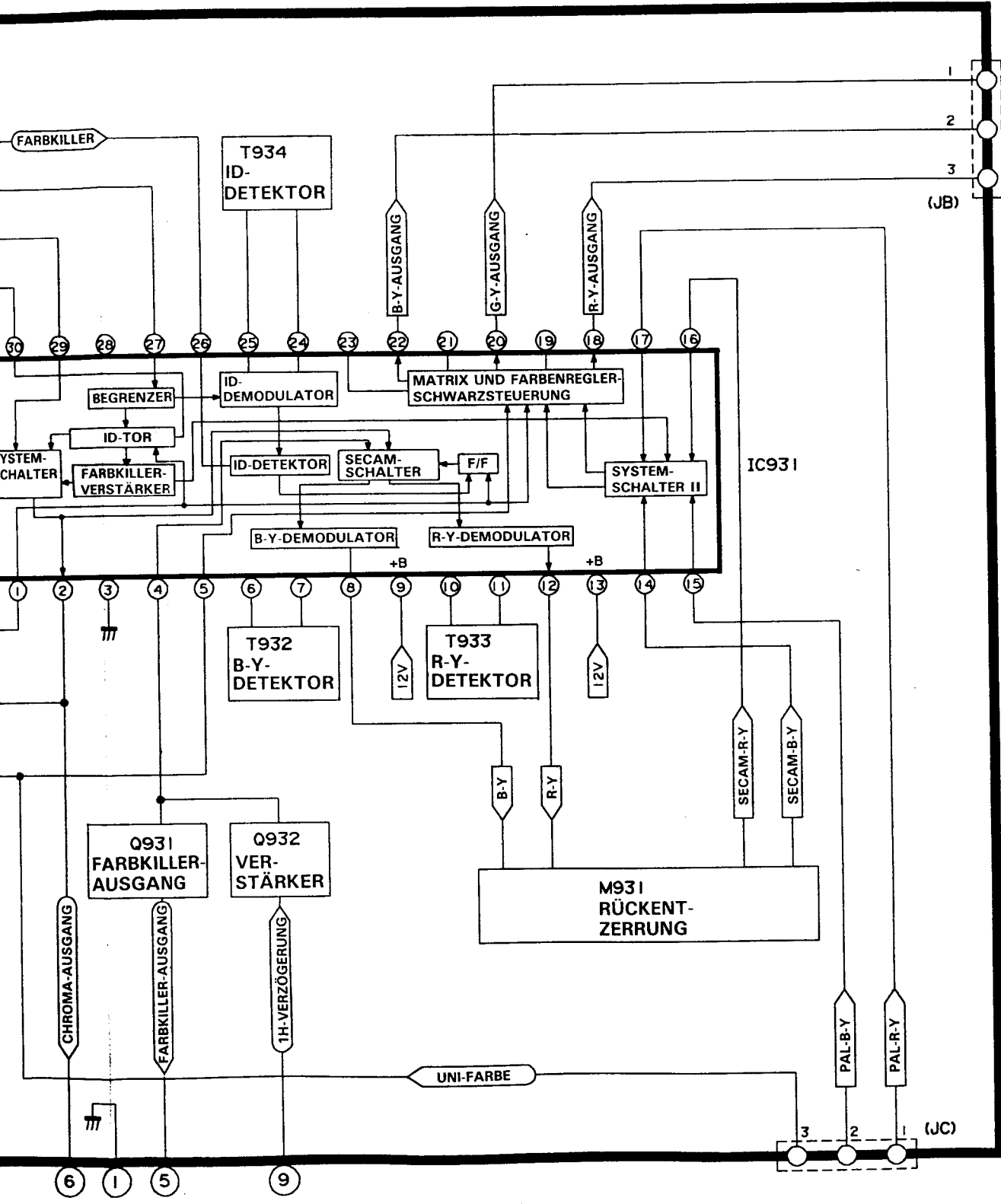
4

5

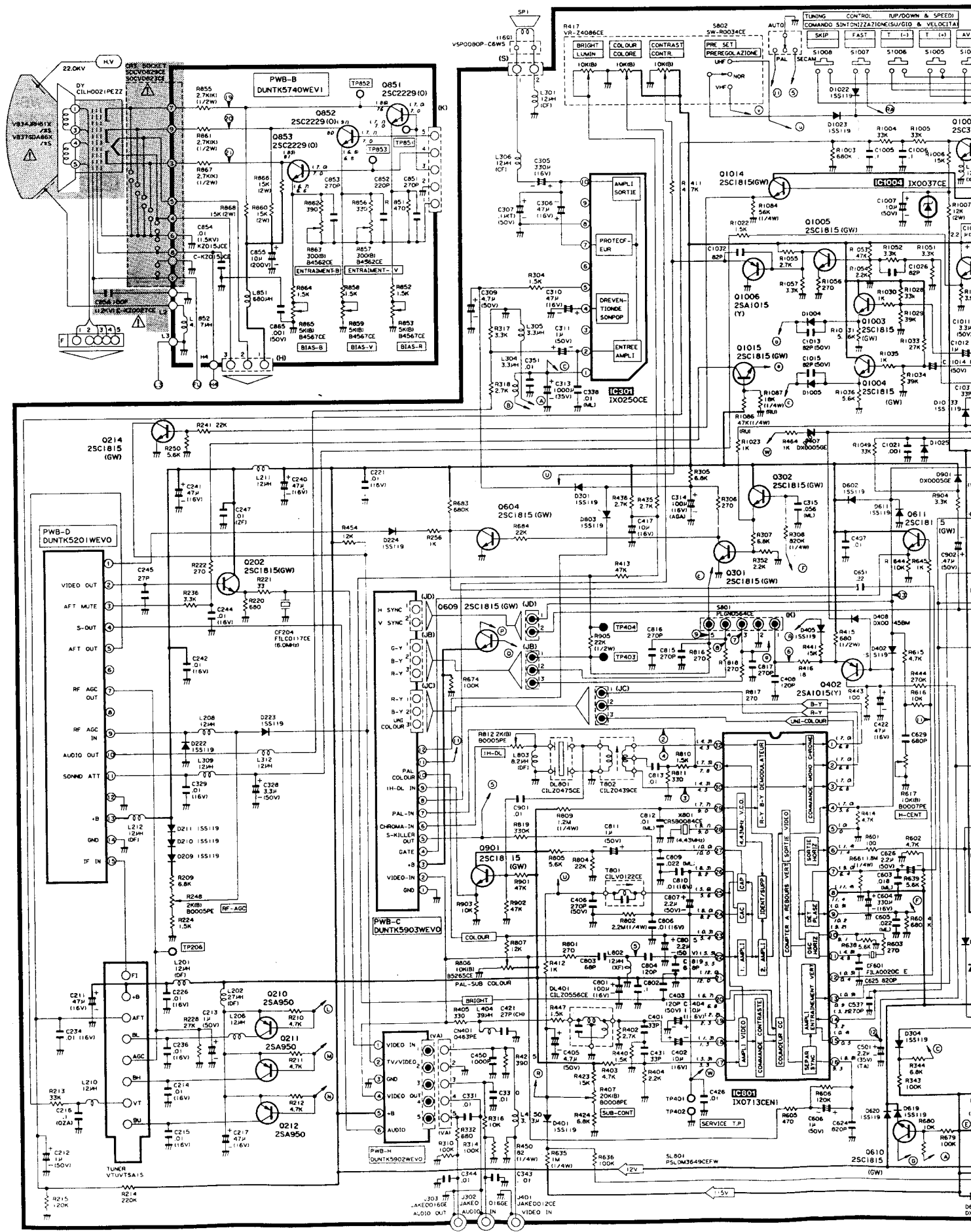
6

7

8



DELS/MODELL CV-3710G SCHEMATIC DIAGRAM / SCHEMATISCHER SCHALTPLAN



10S(BK)/(W) CV-3710S(BK)/(W)
10G(BK)/(W) CV-3710G(BK)/(W)

CHER SCHALTPLAN

