

IBBK

FSA-1800

SERVICE MANUAL

Chapter 1

(Acoustic)

CONTENT

CHAPTER 1 (ACOUSTIC)

SPECIFICATIONS-----	2
PRECAUTIONS-----	2
GENERAL CHART-----	3
BILL OF MATERIAL-----	4

CHAPTER 2 (ELECTRONIC)

TECHNICAL PARAMETER-----	6
DISASSEMBLY INSTRUCTION-----	7
FLOW CHART-----	10
PRINCIPLE CHART-----	11
PCB BOARD-----	13
GENERAL CHART-----	15
BILL OF MATERIAL-----	16

SPECIFICATIONS

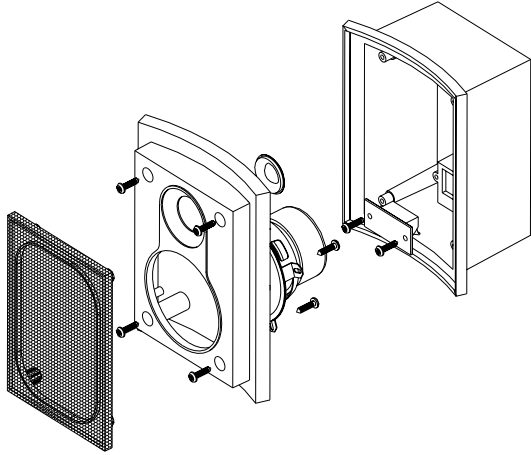
Model Number	FSA-1800	FSA-1800	FSA-1800
Cabinet Type	Satllite Speaker	Center Speaker	subwoofer
Component	3" woofer x1 1" tweeter	3" woofer x1 1" tweeter	6.5" woofer
Speaker System	Close	Close	Bass Reflex
Speaker Terminals	Spring Clip	Spring Clip	Spring Clip
Dimensions (WxDxH)mm	123x93x160	123x93x160	162x390x395
Weight(net)	0.5 kg/pc	0.5 kg/pc	7.9 kg/pc

PRECAUTIONS

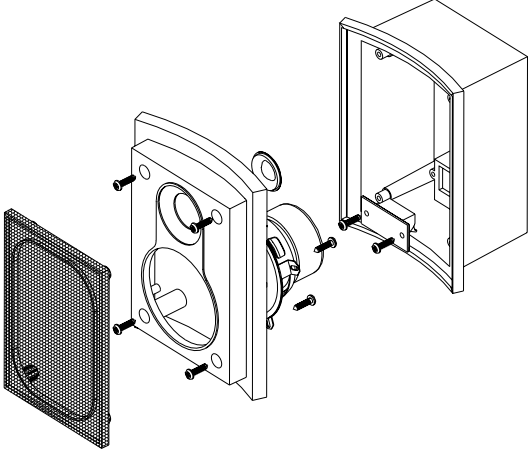
- For the speaker
There are wires connected speakers with crossover, when disassembling the speakers or crossover, remember to unplug the connecting terminals.
- For the subwoofer only
There are wires connected speaker with amplifier panel, when disassembling speaker, remember to unplug the connecting terminals.
when disassembling amplifier panel, please refer to Chapter 2(Electronic).

GENERAL CHART

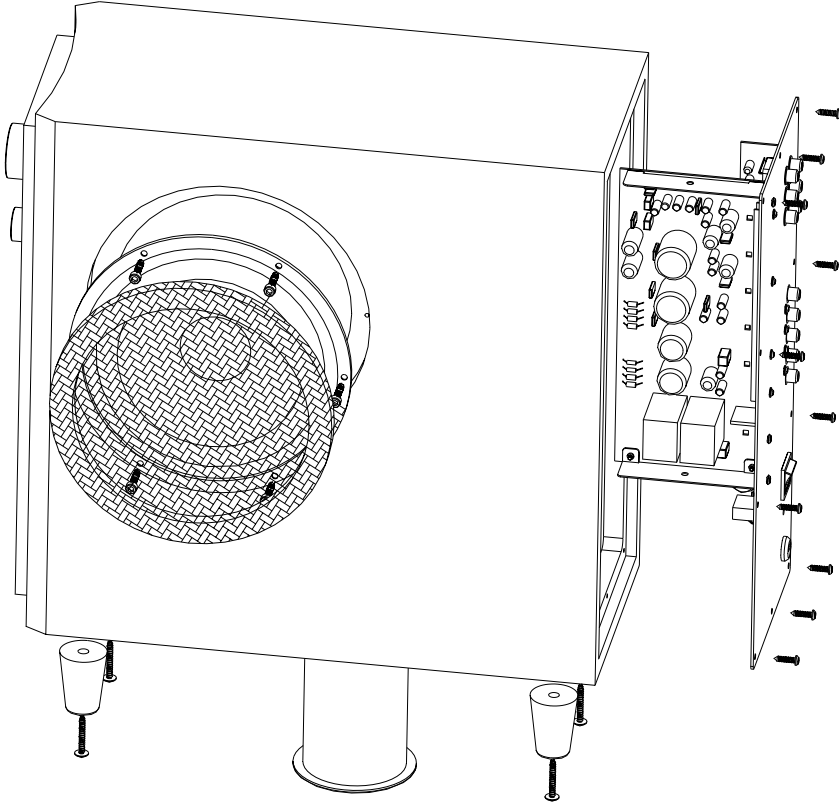
FSA-1800(Satllite Speaker)



FSA-1800(Center Speaker)



FSA-1800 (Subwoofer)



Bill of Material

This bill is only for servicing use.

Chapter 2

(Electronic)

TECHNICAL PARAMETER

Output Power

Subwoofer : 20Watts RMS

Front and surround speaker : 10Watts RMS

Center speaker : 10Watts RMS

Power Consumption : 100Watts

System S/N ratio : ≥ 70 dB

Frequency Response :

Sub woofer : 40Hz-120Hz

Front Center Surround : 100Hz-20KHz

Input Voltage : AC230V 50Hz

DISASSEMBLY INSTRUCTION

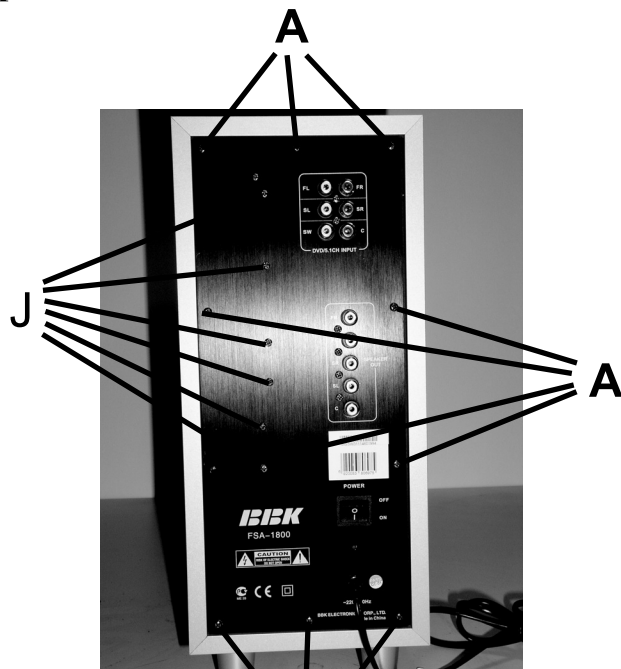
Please study the circuitry position well before any disassembly to ensure all wires locate as original.

1. The parts in fig 1 can't be changed by customer.



fig 1

2. Unscrew A to fake off the back panel.



A
fig 2

3. Take off transformer: unscrew B to take off the transformer.

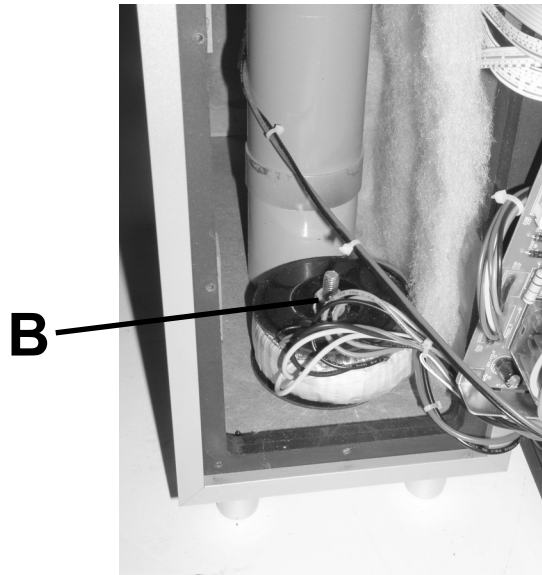


fig 3

4. Change fuse tube: take off the fuse according to instruction C and change a same specification one.

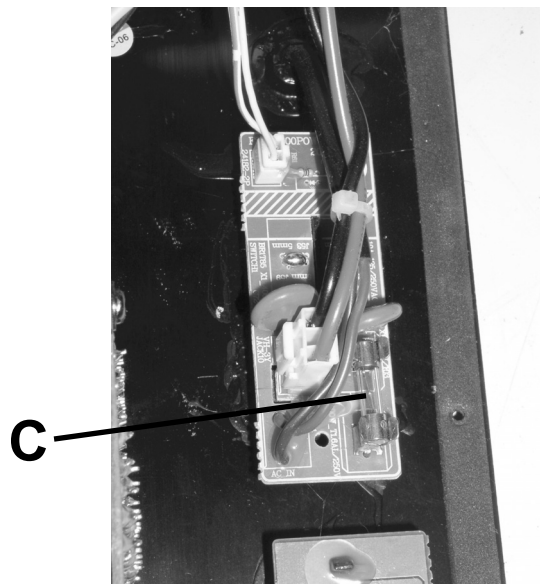


fig 4

5. Take off main amplifier board:
unscrew J (fig 1) to take off
amplifier board D.

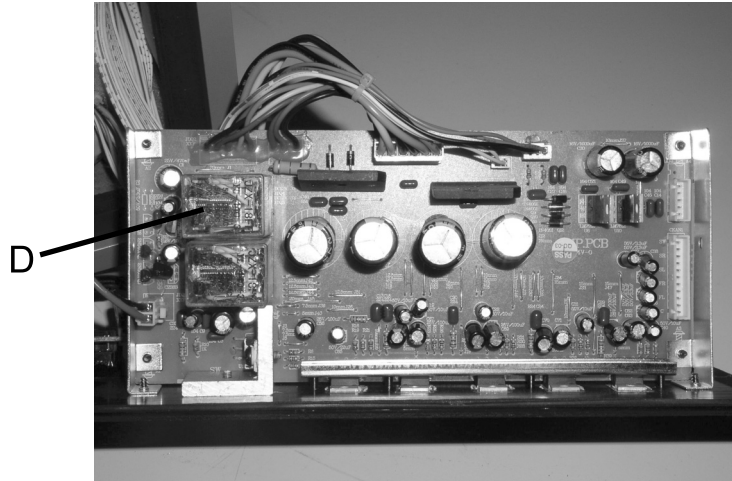
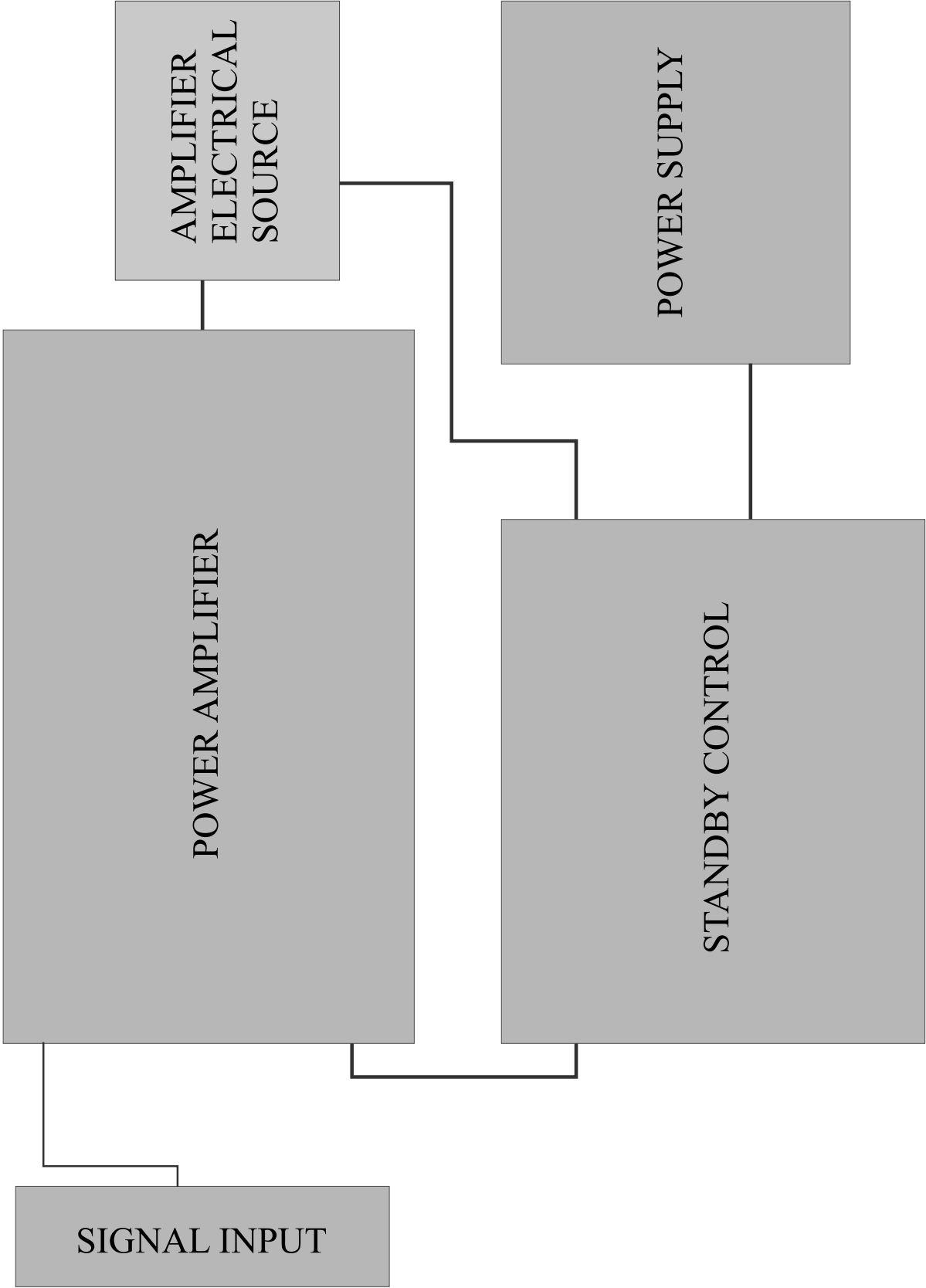
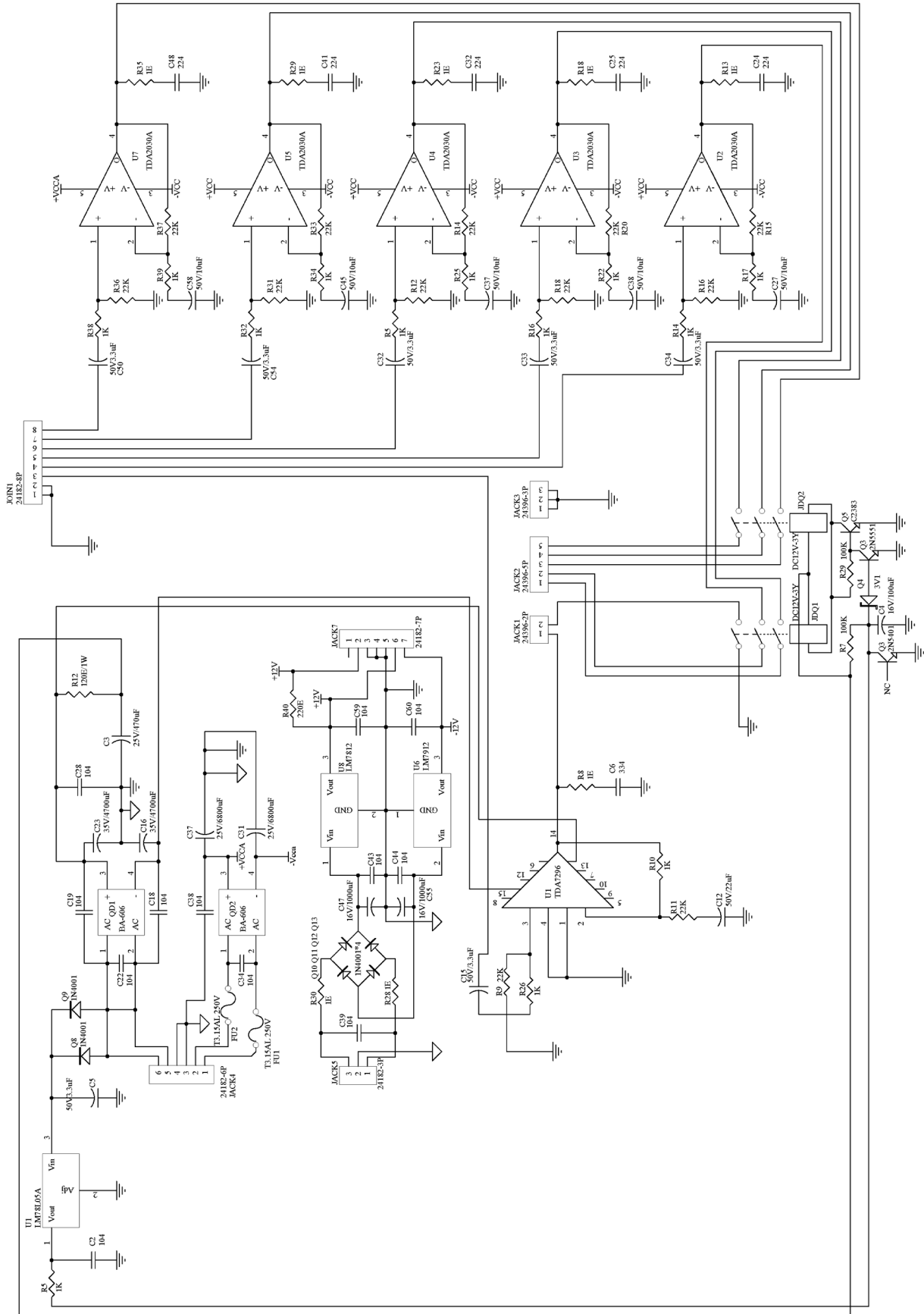


fig 5

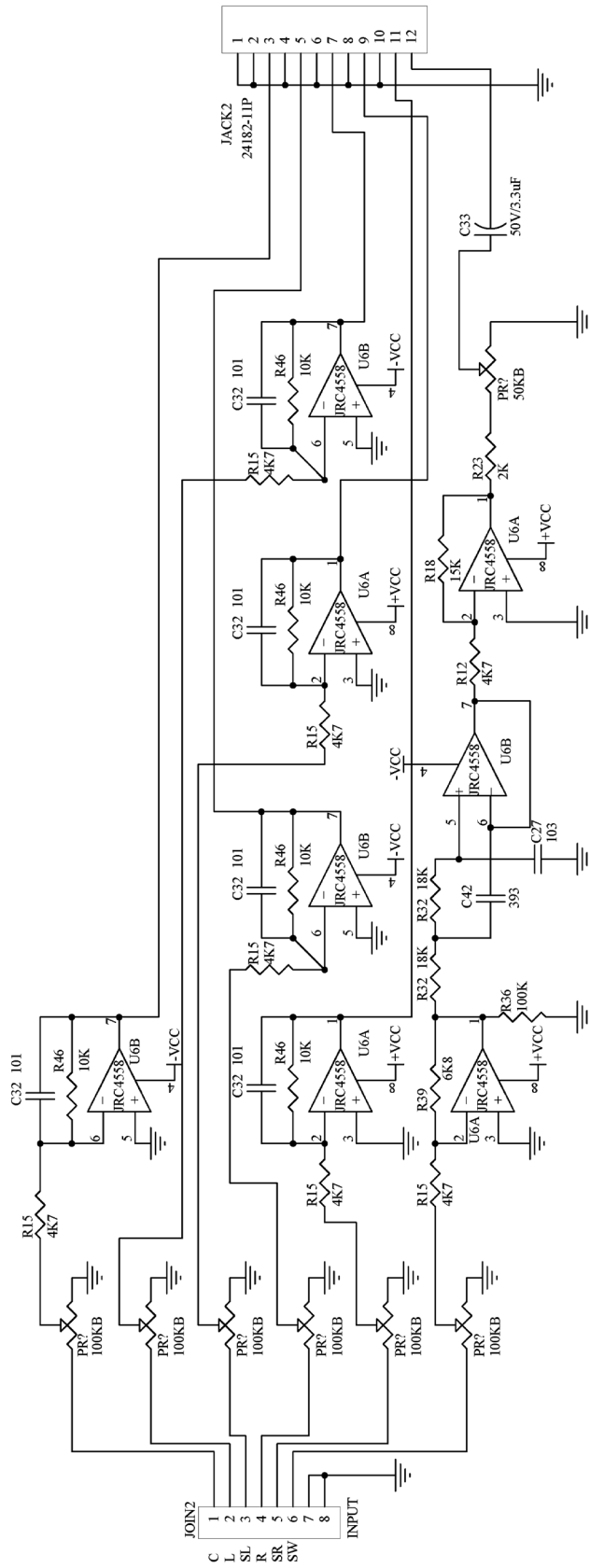
FLOW CHART



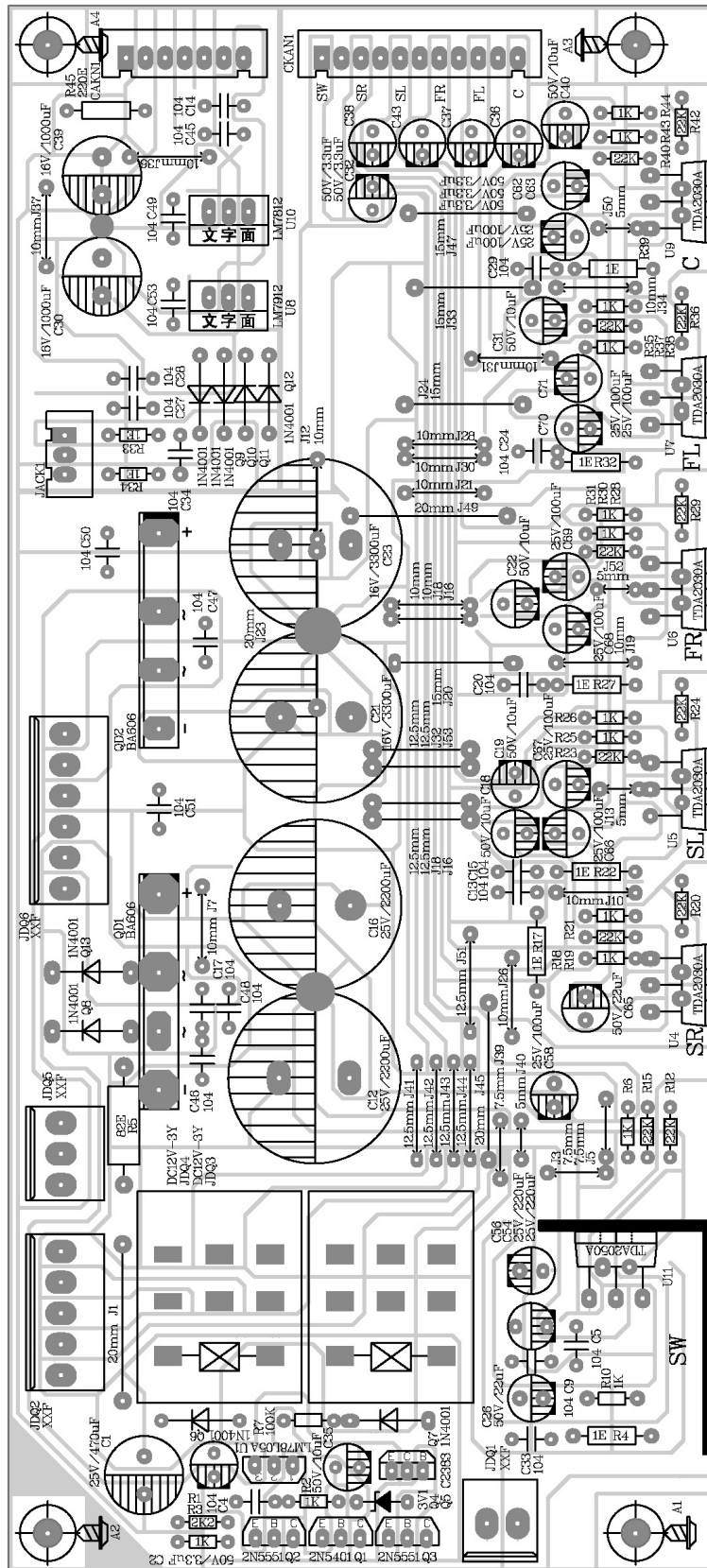
PRINCIPLE CHART



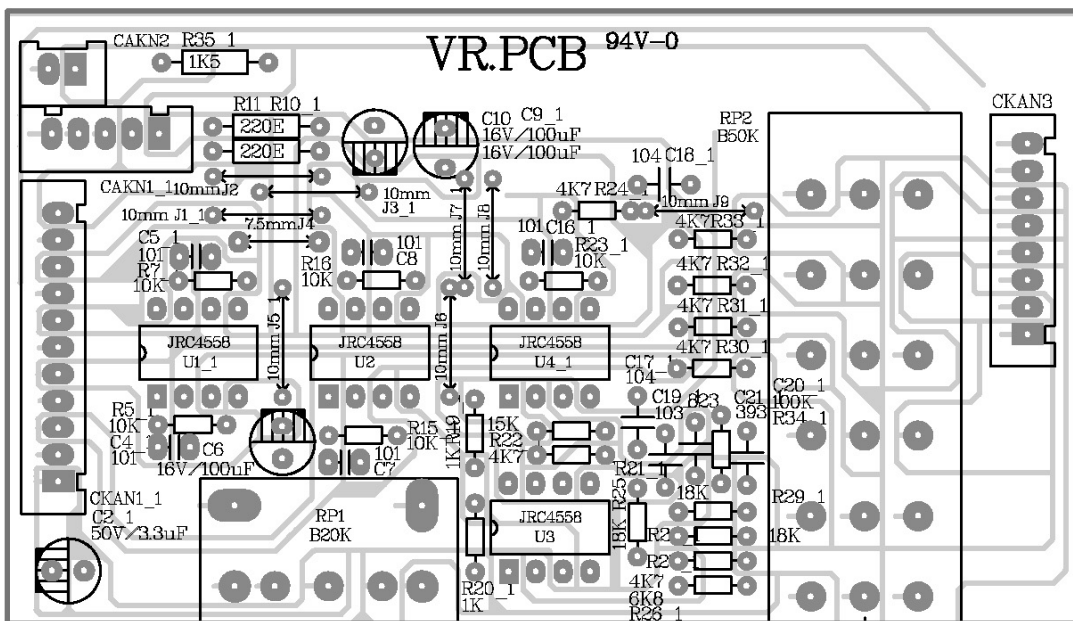
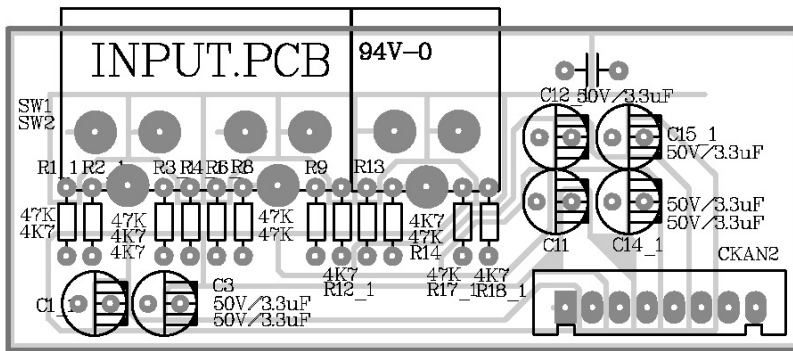
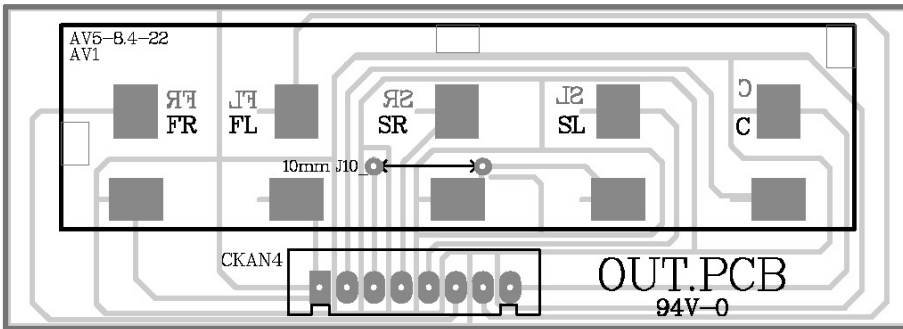
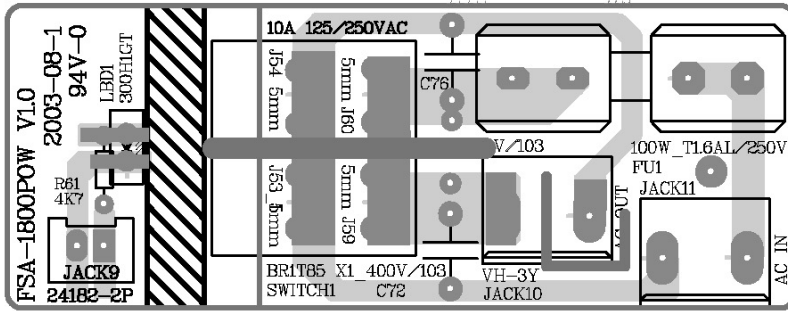
PRINCIPLE CHART



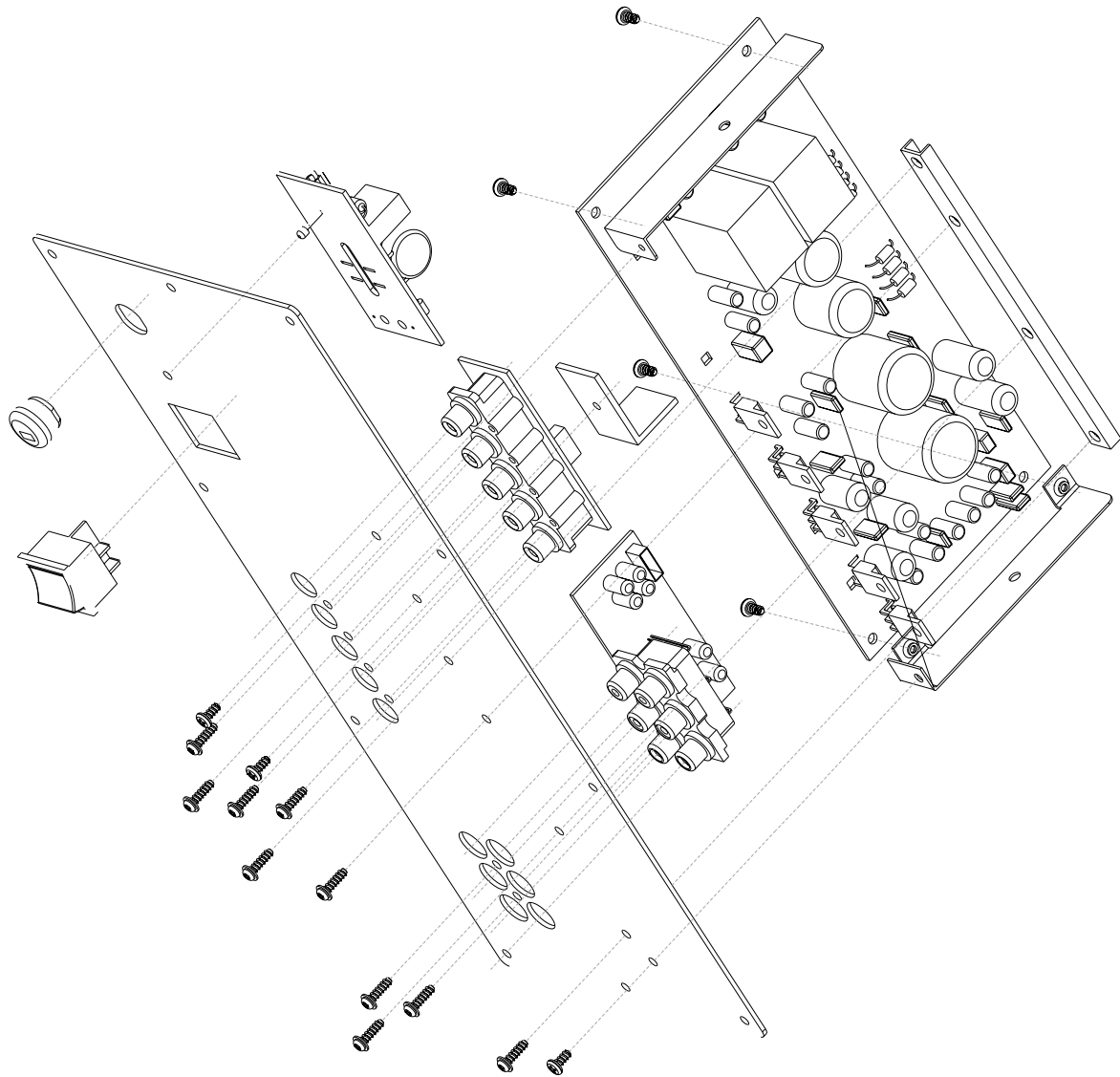
PCB BOARD CHART



PCB BOARD CHART



GENERAL CHART



BILL OF MATERIAL

BBK