

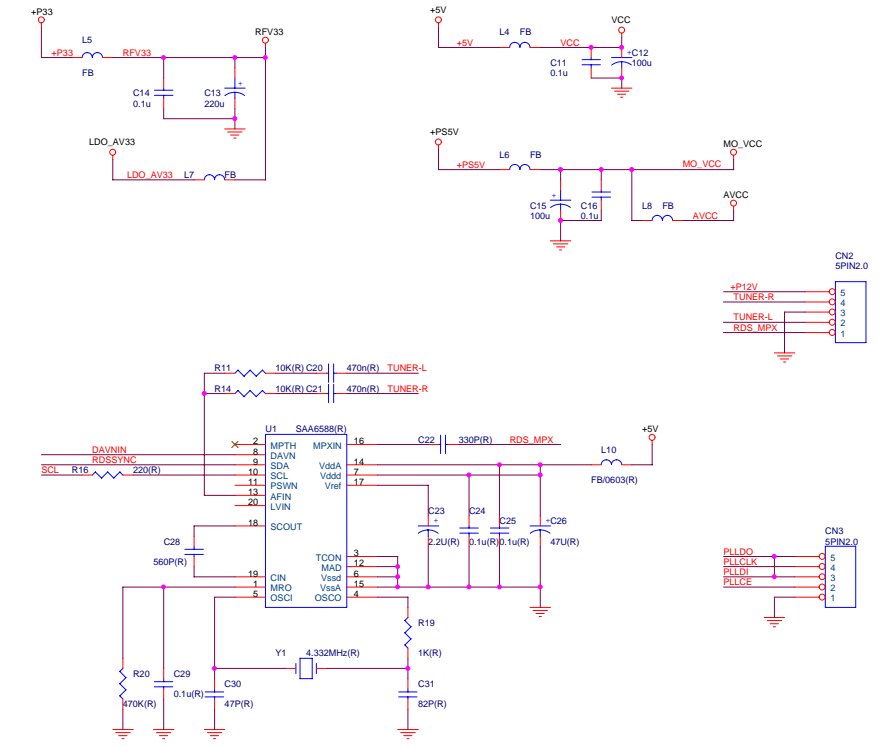
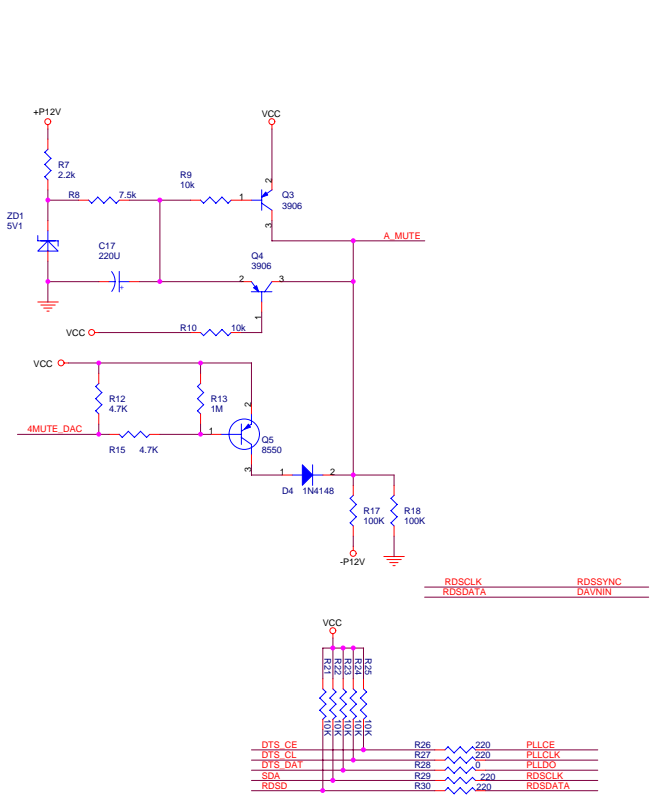
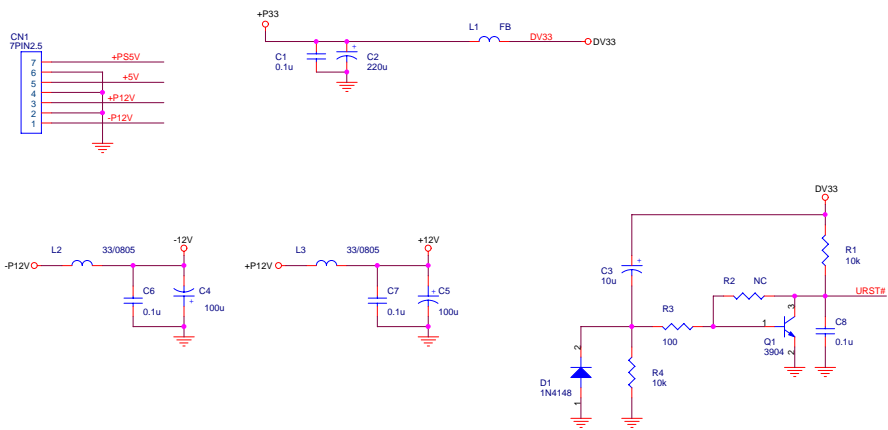
# 10. SCHEMATIC DIAGRAMS

1) MEG SCH1

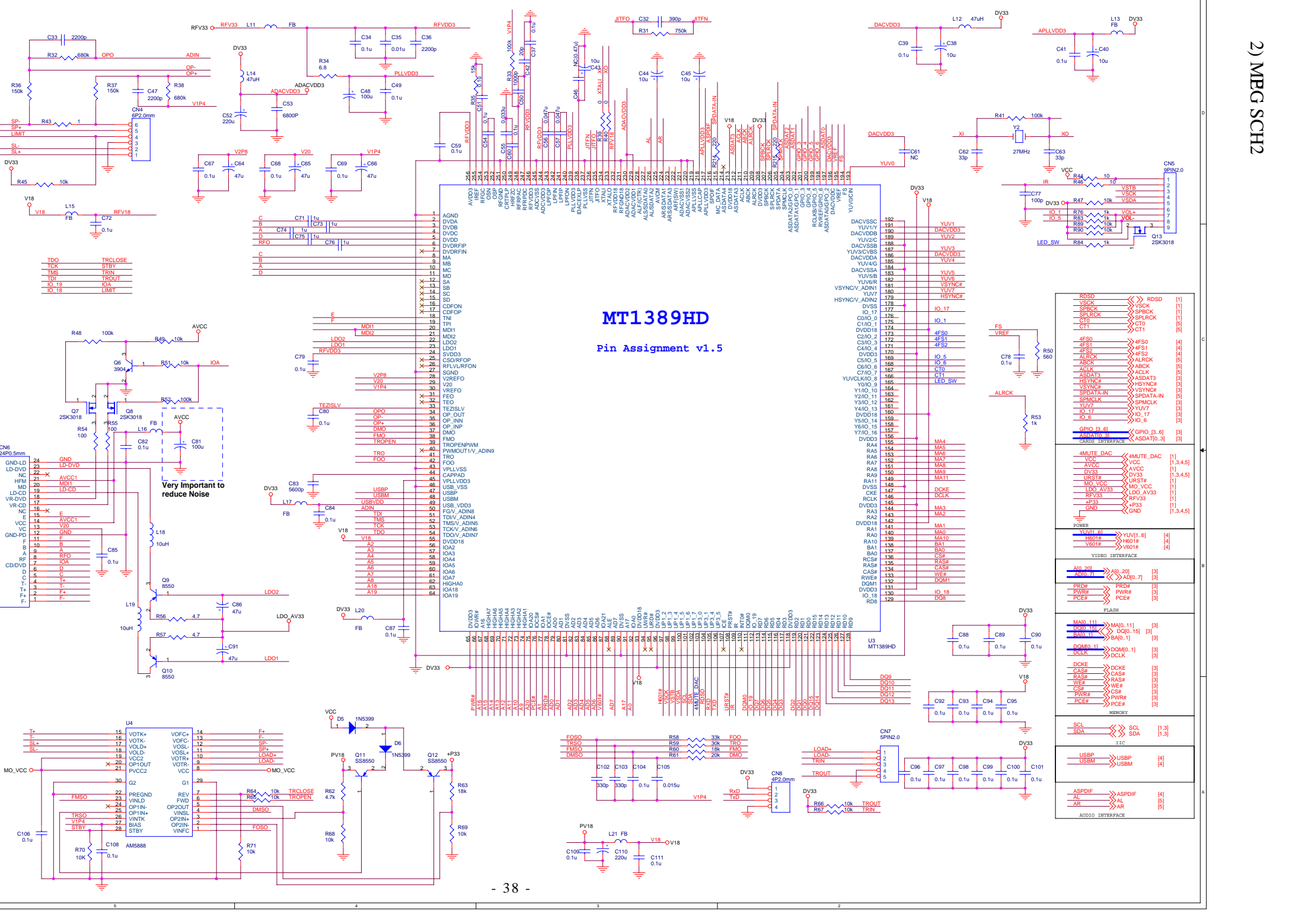
## VTREK89HAM2-MINI MT1389HD DVD RECEIVER Demo Board for SONY 313 PUH

- 1 INDEX & POWER, RESET
- 2 SERVO / MPEG - MT1389HD
- 3 MEMORY - SDRAM, FLASH/EEPROM
- 4 VIDEO FILTER
- 5 AUDIO FILTER

NAME	TYPE	DEVICE
VCC	Digital 5V	SUPPLY
DV33	Digital 3.3V	MT1389HD
RFV33	Servo 3.3V	MT1389HD
AV33	Laser Diode 3.3V	
V18	Digital 1.8V	MT1389HD
SD33	Digital 3.3V	SDRAM
+12V	Audio +12V	OP AMP.
-12V	Audio -12V	OP AMP.
AVDD5	Audio 5V	Audio DAC
DVDD3	Audio 3.3V	Audio DAC



- TUNER-L >>> TUNER-L [5]
- TUNER-R >>> TUNER-R [5]
- AMUTE\_DAC >>> AMUTE\_DAC [2]
- A\_MUTE >>> A\_MUTE [5]
- URST# >>> URST# [2]
- DV33 >>> DV33 [2,3,4,5]
- VCC >>> VCC [2,3,4,5]
- AVCC >>> AVCC [2]
- LDO\_AV33 >>> LDO\_AV33 [2]
- RFV33 >>> RFV33 [2]
- +P33 >>> +P33 [2]
- +P12V >>> +P12V [4,5]
- +12V >>> +12V [5]
- 12V >>> -12V [5]
- MO\_VCC >>> MO\_VCC [2]
- GND >>> GND [2,3,4,5]
- SPBCK >>> SPBCK [2]
- SPLRCK >>> SPLRCK [2]
- VSCK >>> VSCK [2]
- DTS\_CE >>> VSCK
- DTS\_CI >>> SPBCK
- DTS\_DAT >>> SPLRCK
- RDS\_D >>> RDS\_D [2]
- SCL >>> SCL [2,3]
- SDA >>> SDA [2,3]

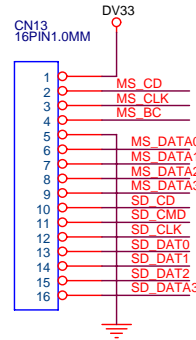
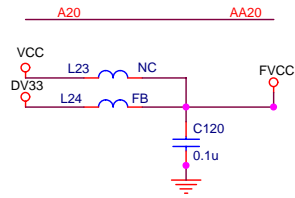
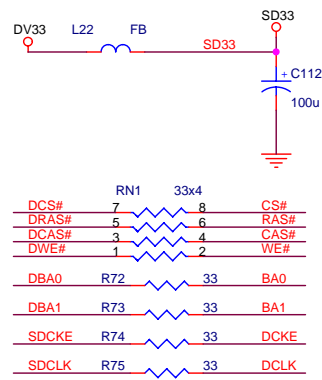
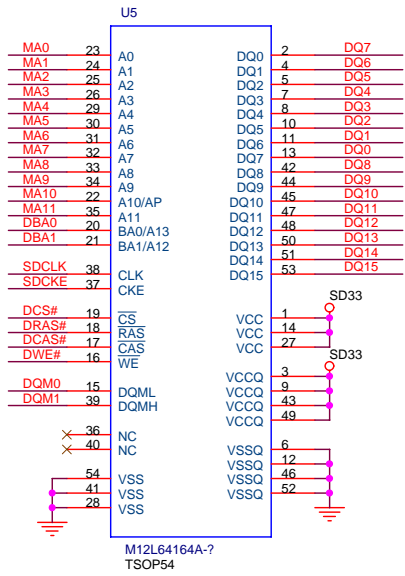


### MT1389HD

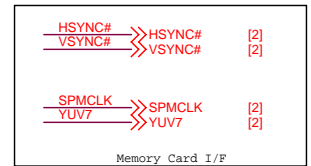
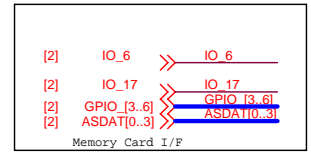
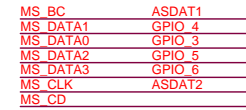
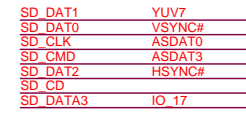
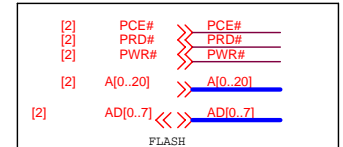
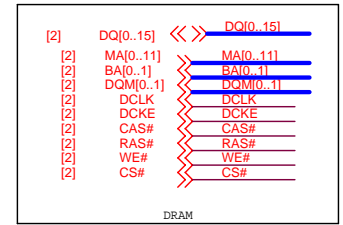
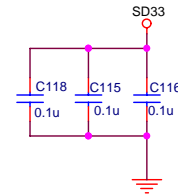
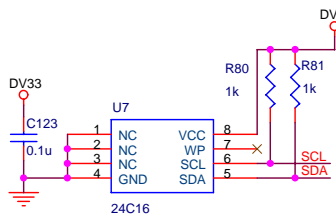
#### Pin Assignment v1.5

Very important to reduce Noise

### 3) MEG SCH3

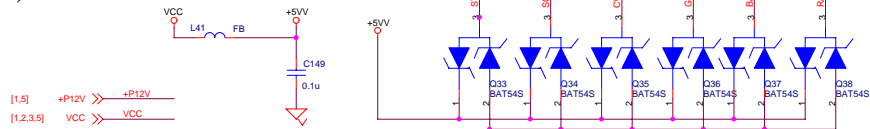


Memory Card Interface

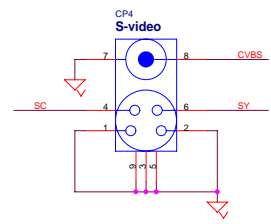
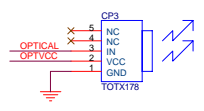
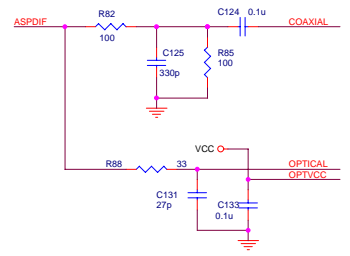
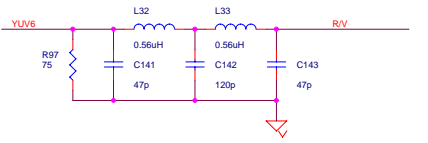
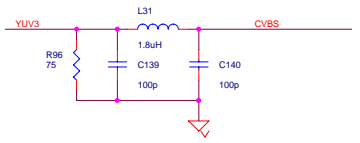
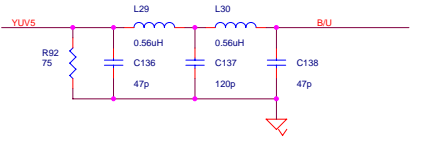
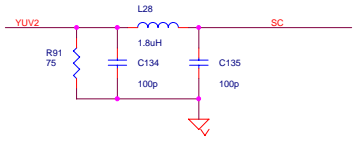
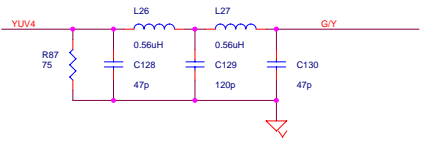
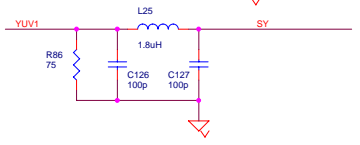


- 39 -

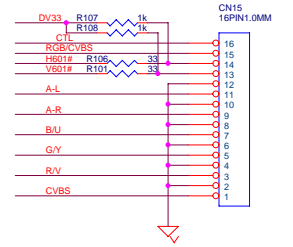
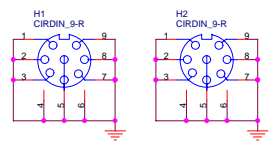
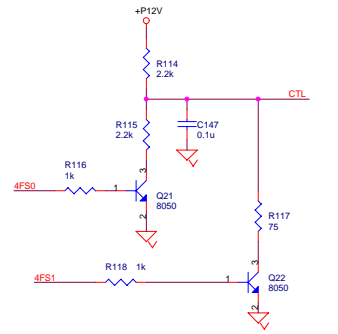
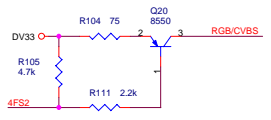
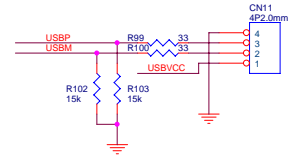
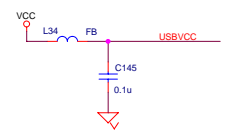
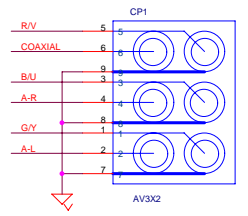
# 4) MEG SCH4



- [1,5] +P12V >> +P12V
- [1,2,3,5] VCC >> VCC
- [1,2,3,5] DV33 >> DV33
- [1,2,3,5] GND >> GND
  
- [2] ASPDIF >> ASPDIF
- [2] H601# >> H601#
- [2] V601# >> V601#
  
- [2] YUV[1..6] >> YUV[1..6]
  
- [2] USBM >> USBM
- [2] USBP >> USBP
- [5] A-R << A-R
- [5] A-L << A-L
  
- [2] 4FS0 >> 4FS0
- [2] 4FS1 >> 4FS1
- [2] 4FS2 >> 4FS2



- 40 -



# 5) MEG SCH5

- [1] -12V >> -12V
- [1] +12V >> +12V
- [1,2,3,4] VCC >> VCC
- [1,4] +P12V >> +P12V
- [1,2,3,4] DV33 >> DV33

- [1,2,3,4] GND >> GND

- [1] A\_MUTE >> A\_MUTE

- [2] AL >> AL

- [2] AR >> AR

- [1,2] 4MUTE\_DAC >> 4MUTE\_DAC

- [4] A-R << A-R

- [4] A-L << A-L

- [1,2,3] SCL << SCL

- [1,2,3] SDA << SDA

- [2] ABCK >> ABCK R156 33 SBCLK

- [2] ALRCK >> ALRCK R157 33 SLRCK

- [2] ACLK >> ACLK R158 33 SACLK

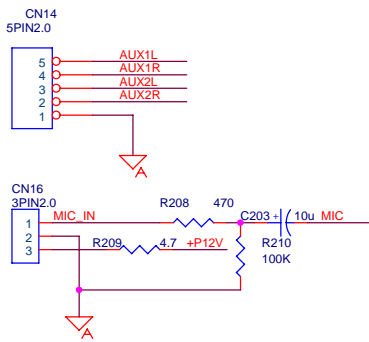
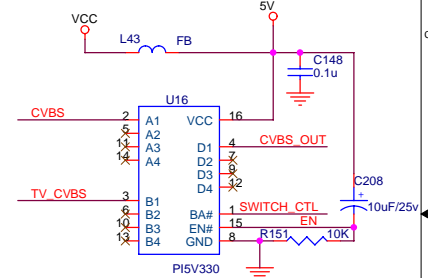
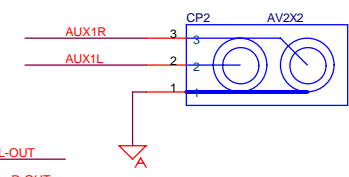
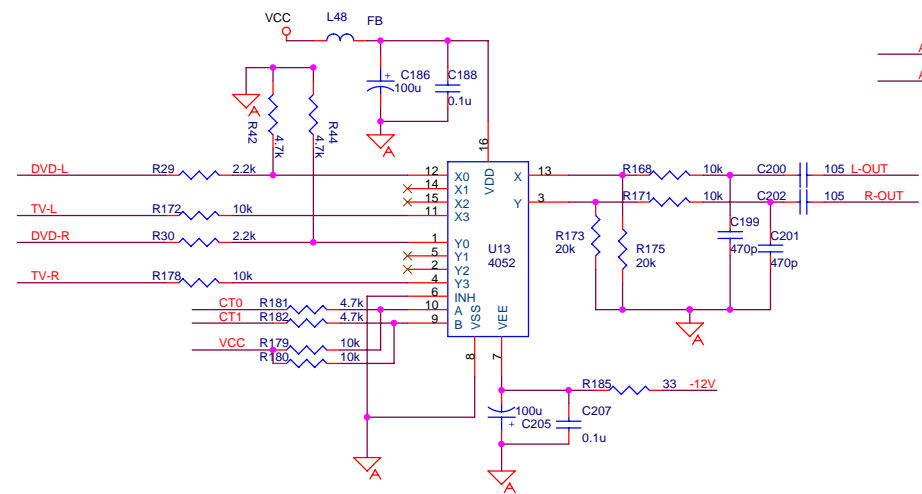
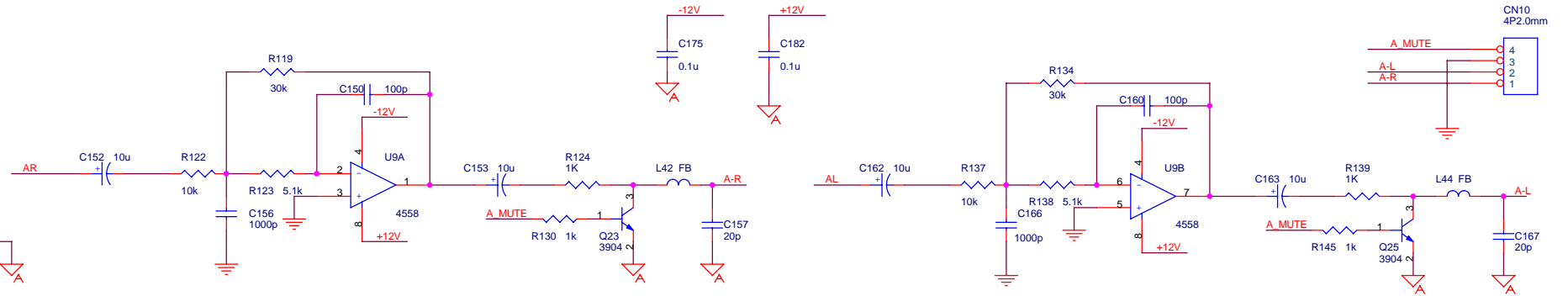
- [2] SPDATA-IN >> SPDATA-IN

- [2] CT0 >> CT0

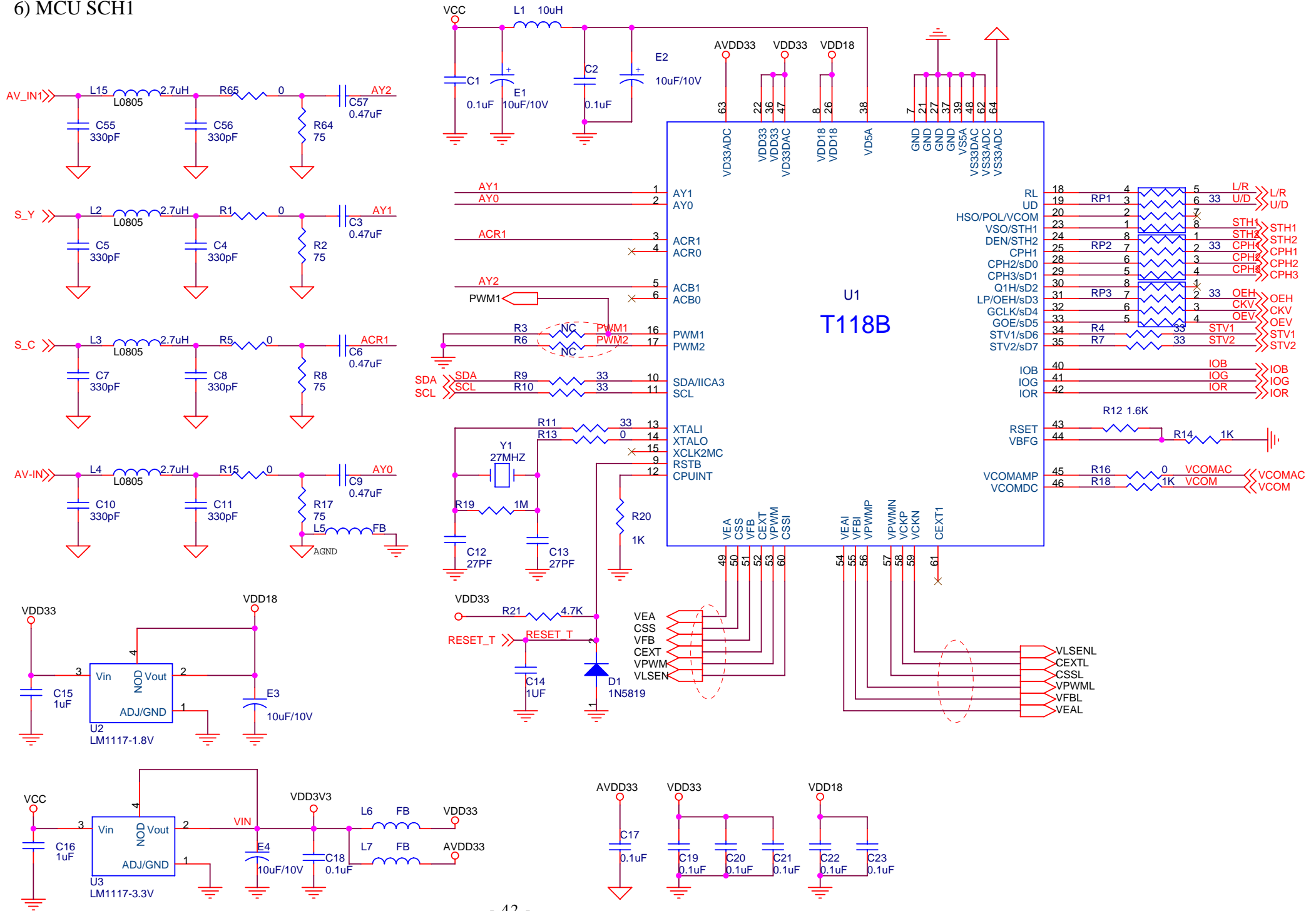
- [2] CT1 >> CT1

- [1] TUNER-L >> TUNER-L

- [1] TUNER-R >> TUNER-R

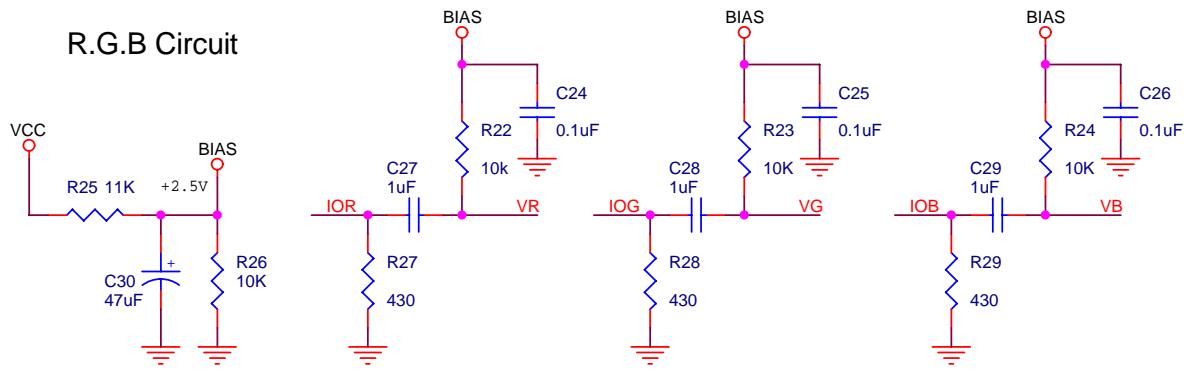


# 6) MCU SCH1

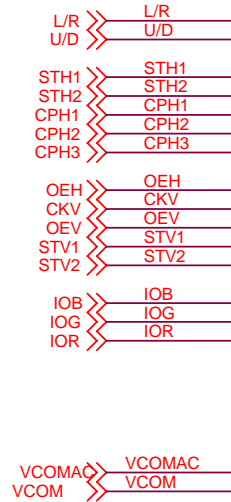
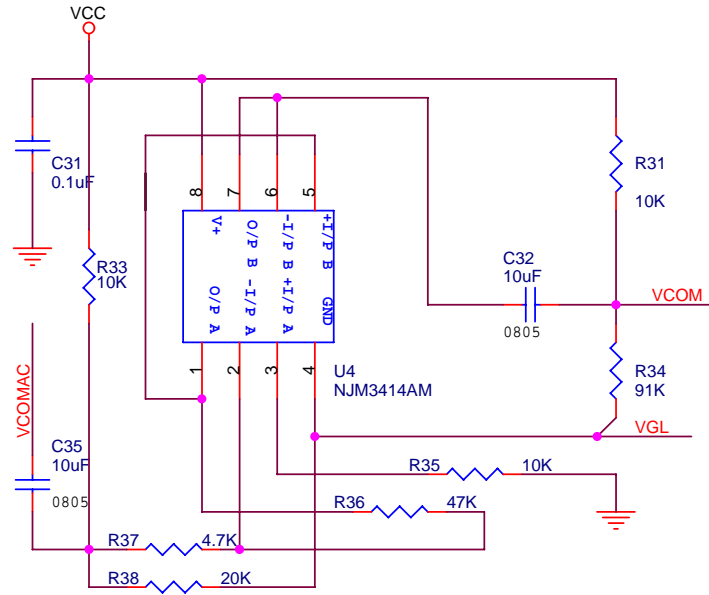


# 7) MCU SCH2

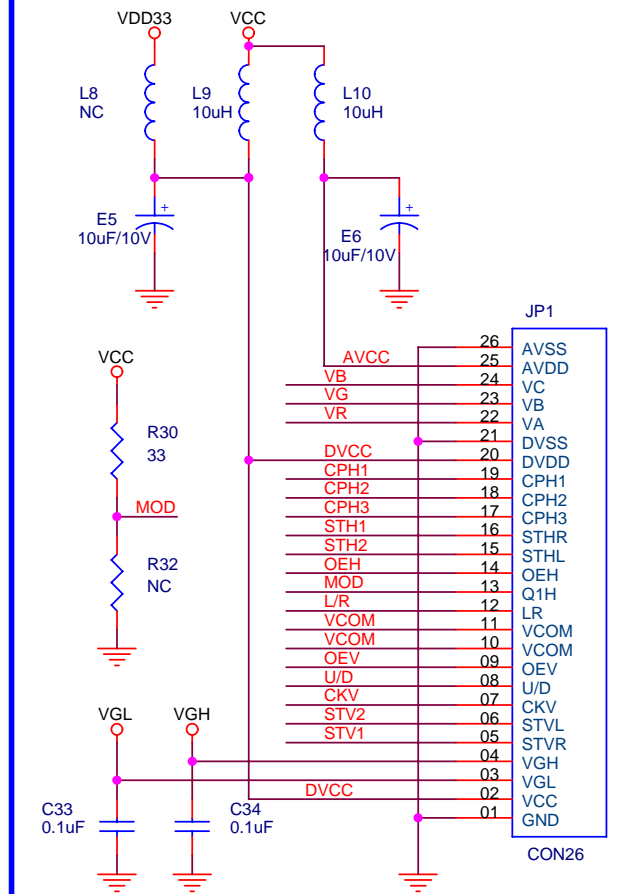
## R.G.B Circuit



## VCOM Circuit

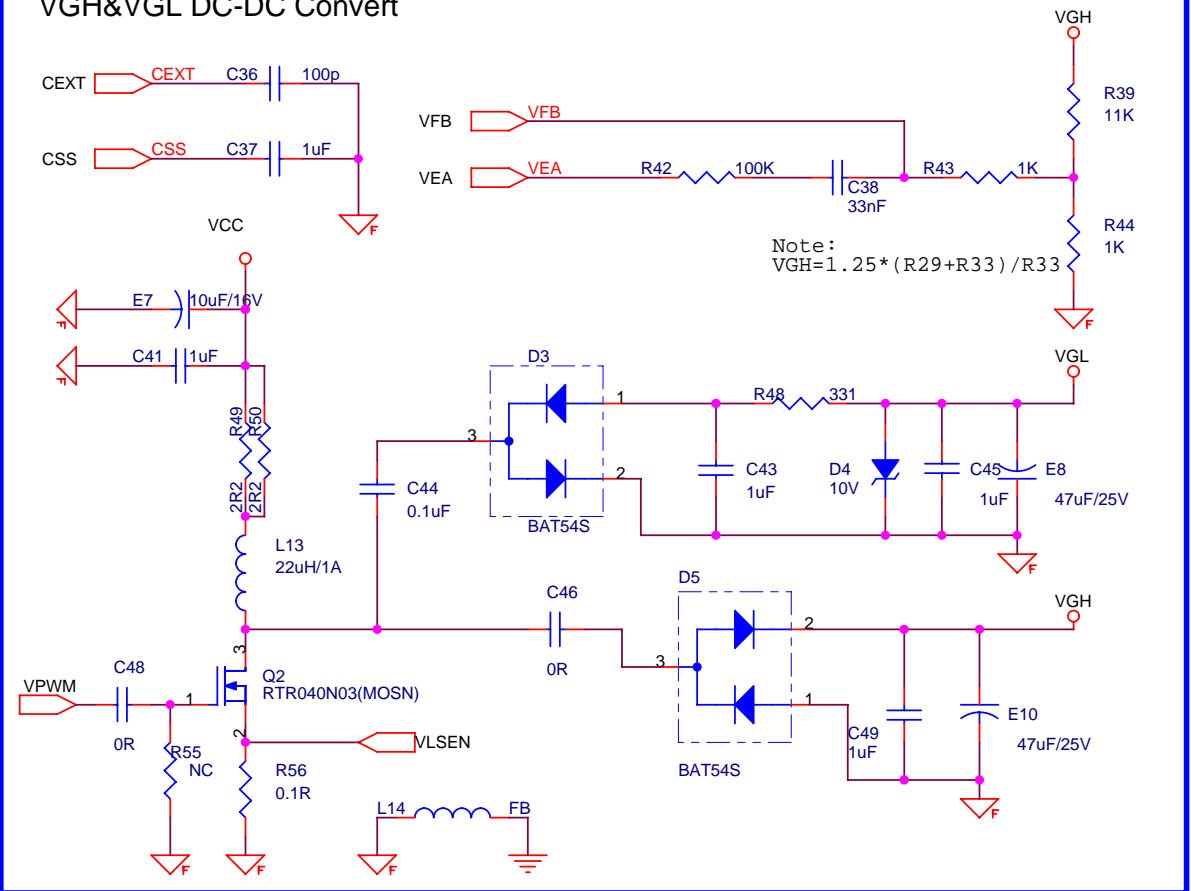


When au7': L18=OPEN, L15=10UH;  
 When Innolux7'&Pw070xu3: L18=10UH, L15=OPEN.

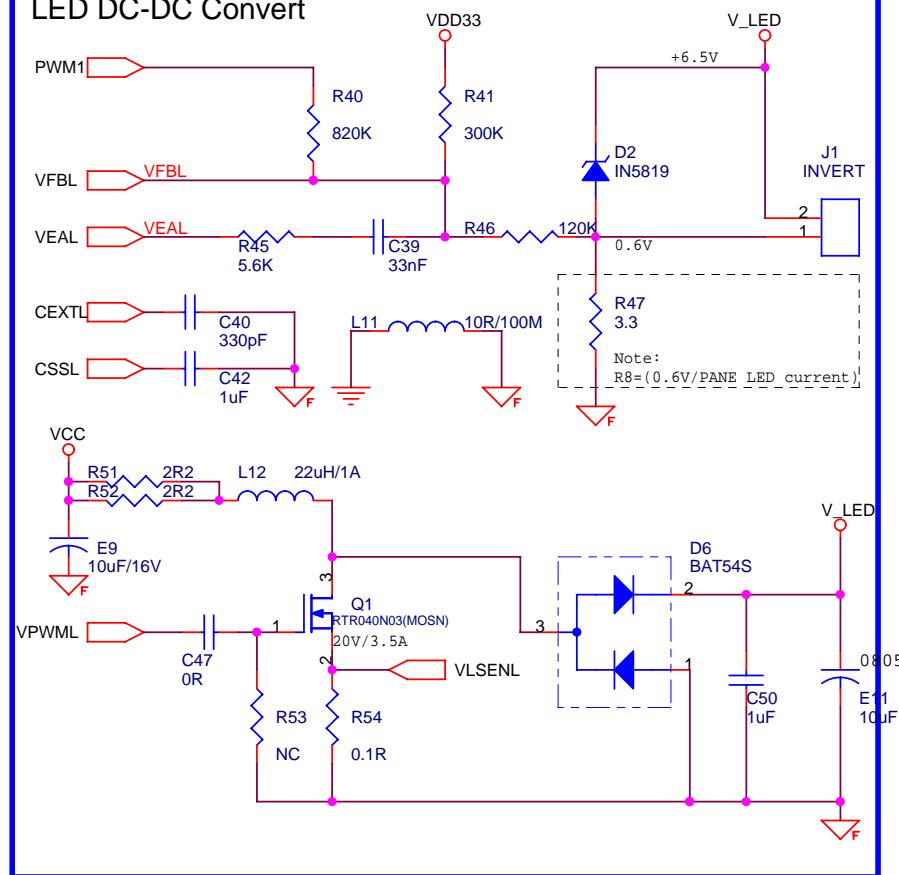


**AU 7" interface**

### VGH&VGL DC-DC Convert



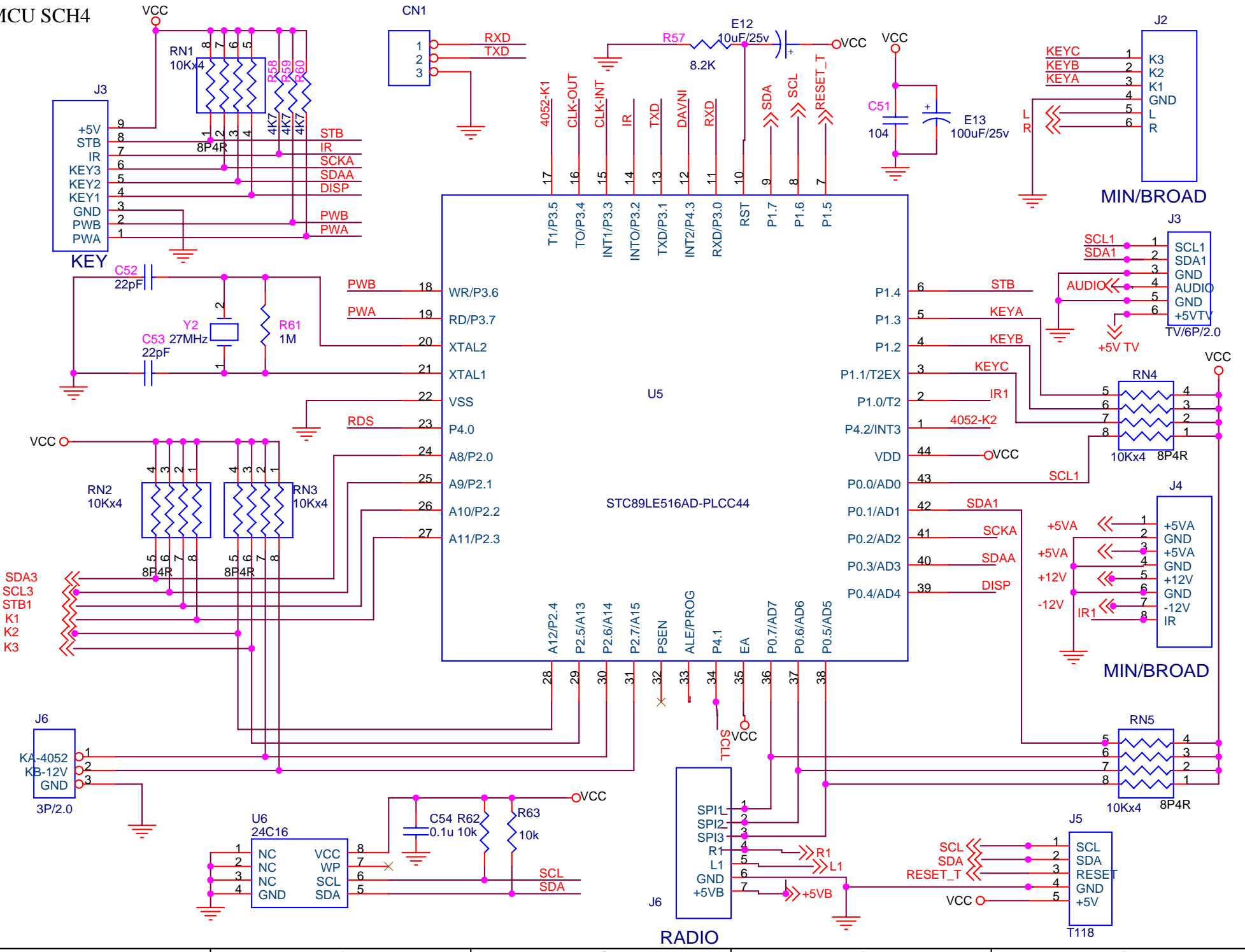
### LED DC-DC Convert



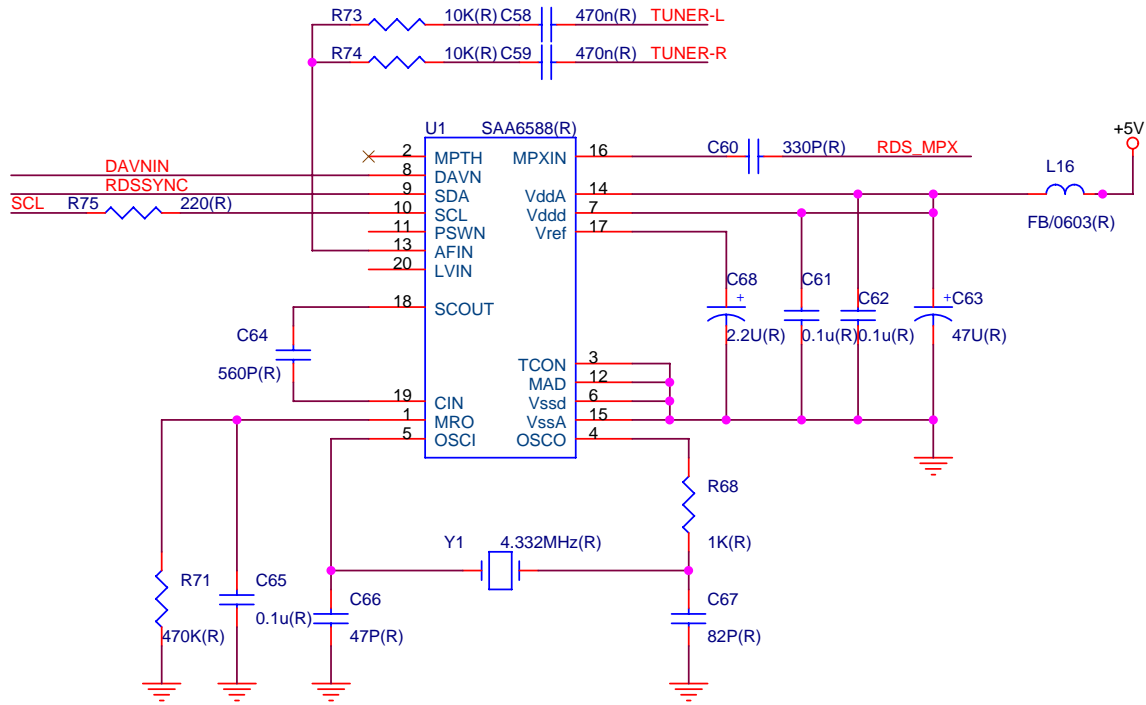


# 9) MCU SCH4

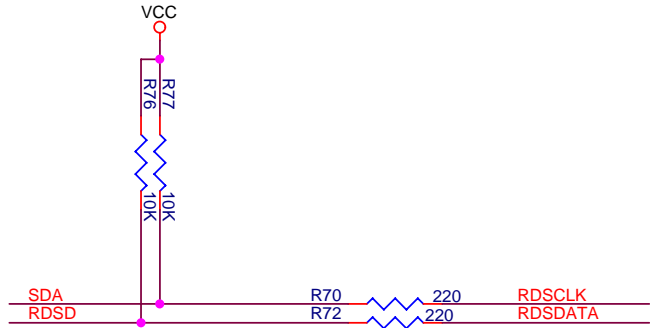
- 45 -



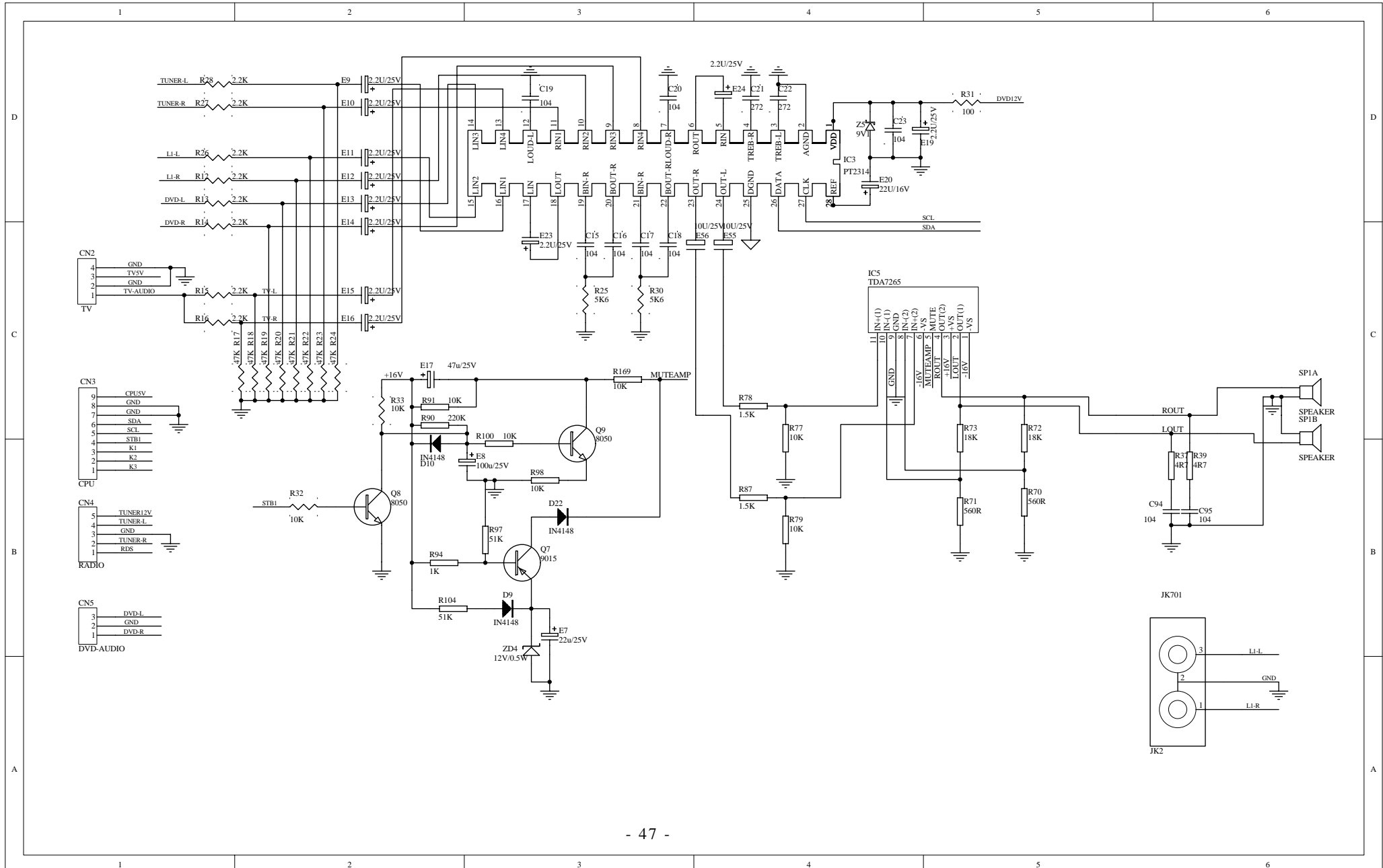
# 10) MCU RDS SCH5



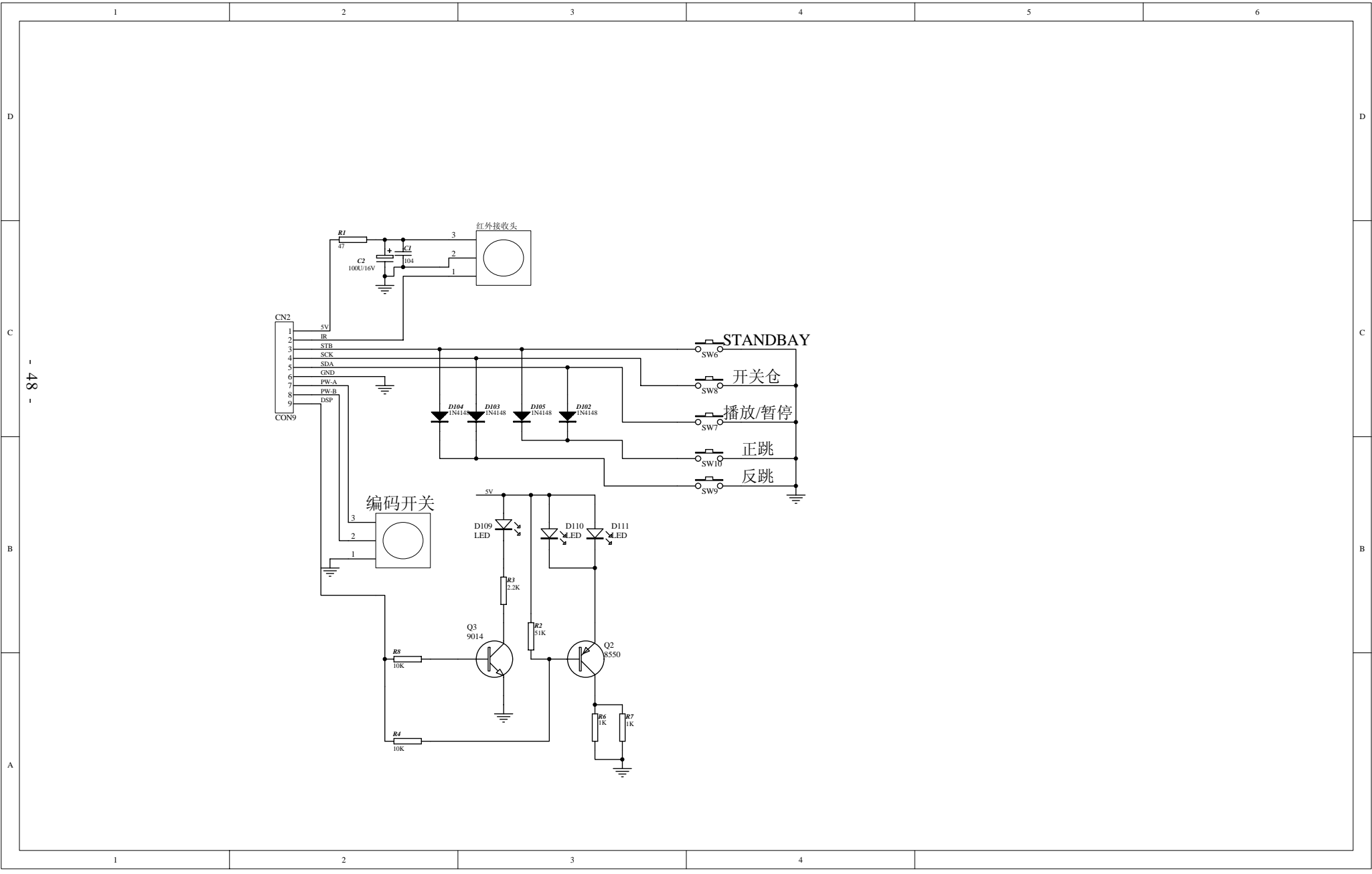
RDSCCLK      RDSSYNC  
 RDSDATA      DAVNIN



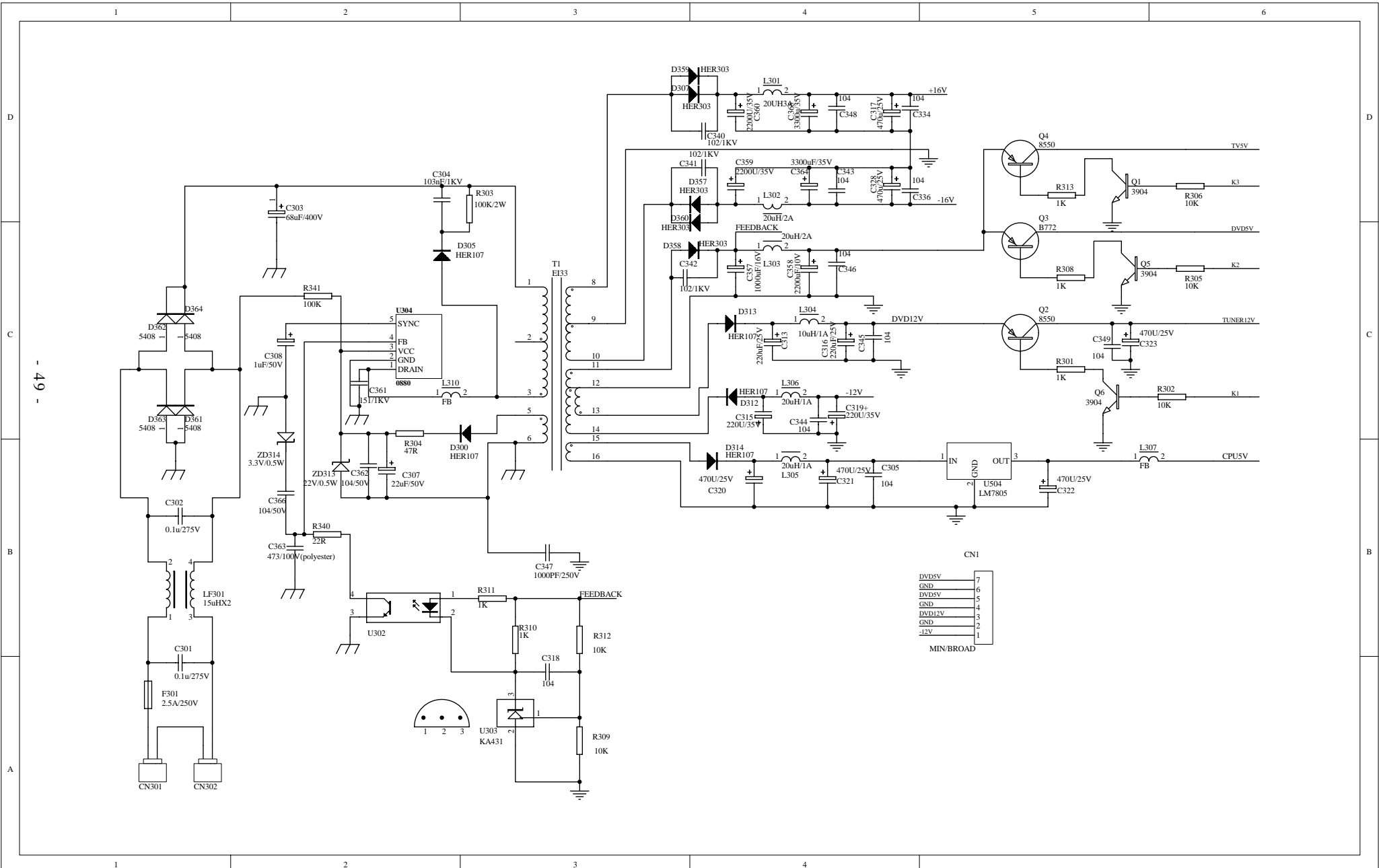
# 11) TONE CONTROL & AMPLIFIER OUTPUT SCH



# 12) FRONT CONTROL (KEY BUTTON) SCH



# 13) SMPS SCH



CN1

DVD5V	7
GND	6
DVD5V	5
GND	4
DVD12V	3
GND	2
-12V	1

MIN/BROAD