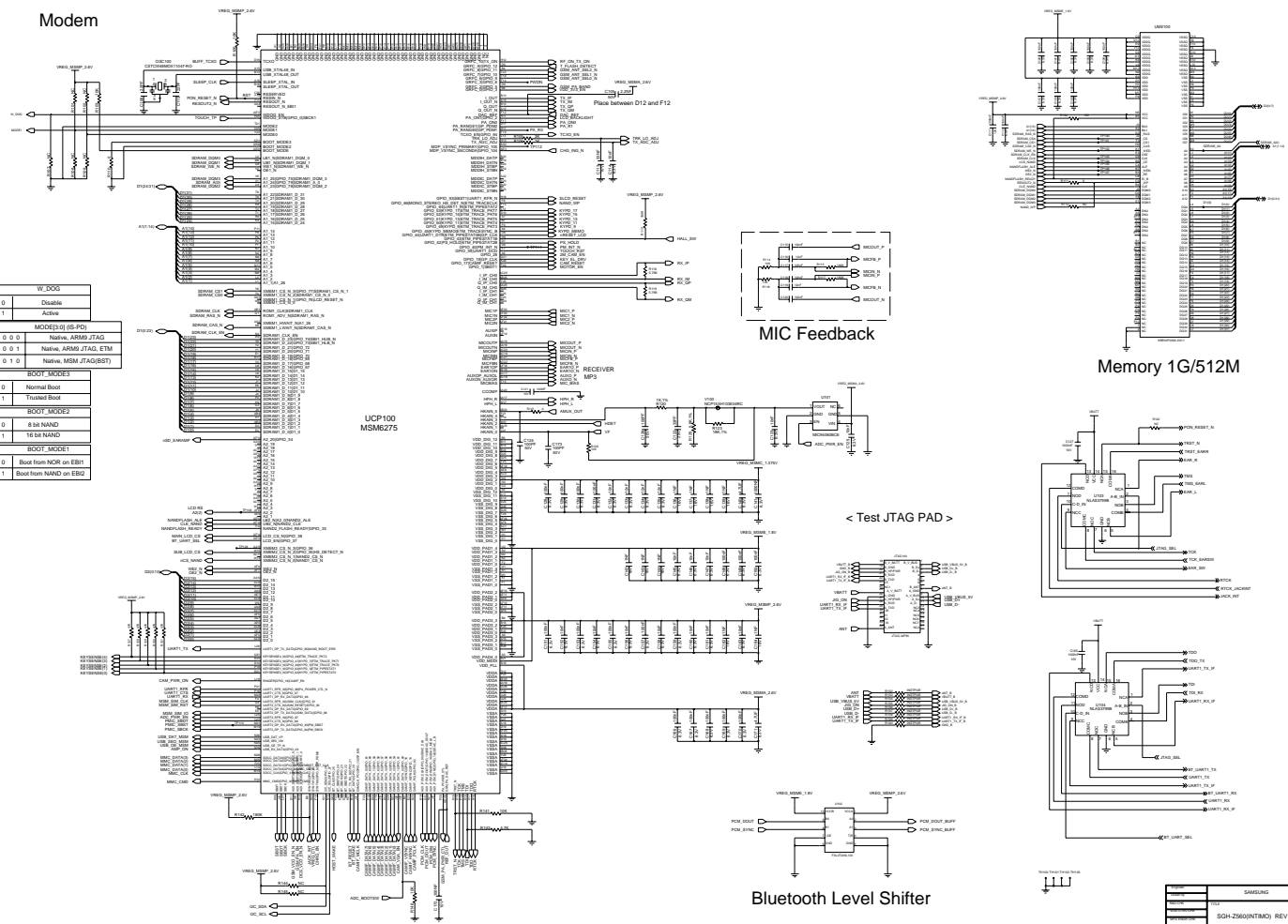
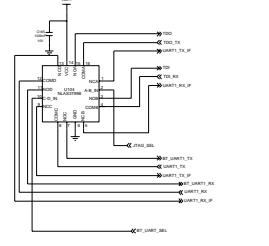
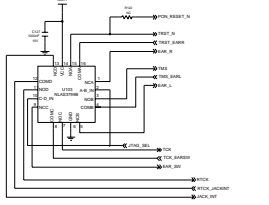
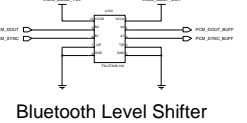
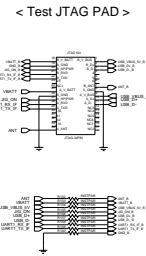
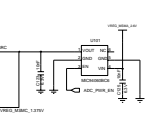
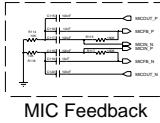
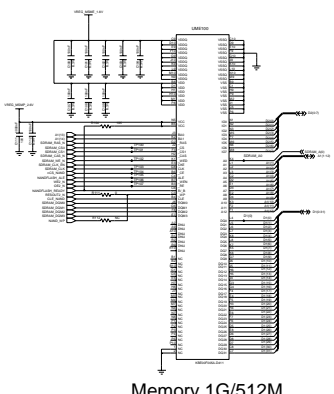
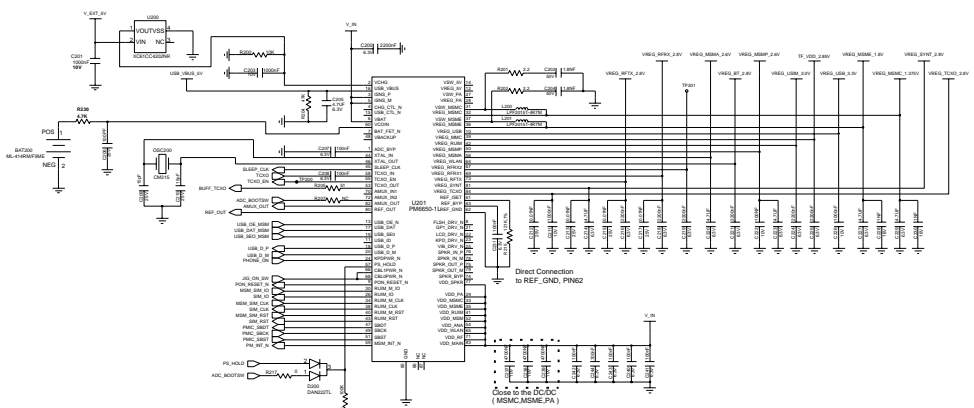


Modem

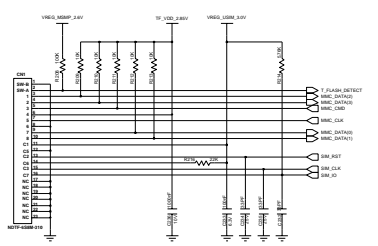


W_BOOT	
0	Disable
1	Enable
MODEM0 (ES-PD)	
0 0 0	Native ARM9 JTAG
0 0 1	Native ARM9 JTAG, ETM
0 1 0	Native ARM9 JTAG/SUBST
BODY_MODE0	
0	Normal Boot
1	Trusted Boot
BODY_MODE2	
0	8 bit NAND
1	16 bit NAND
BODY_MODE1	
0	Boot from NOR on EBI
1	Boot from NAND on EBI

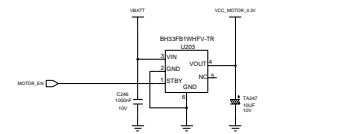




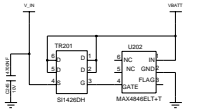
Power Management IC



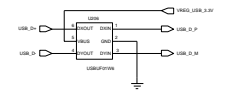
T-flash / USIM Socket



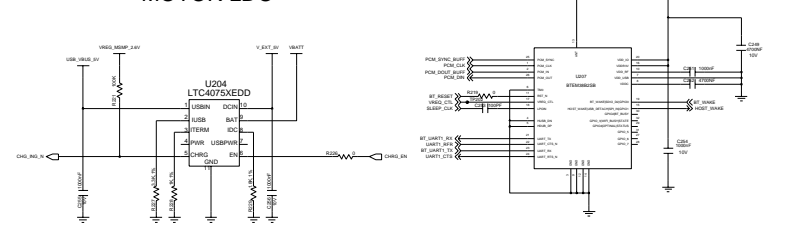
MOTOR LDO



PMIC Protect Logic

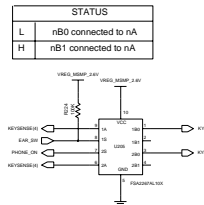


USB High SPEED Filter

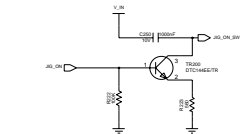


Charging Logic

Bluetooth Module



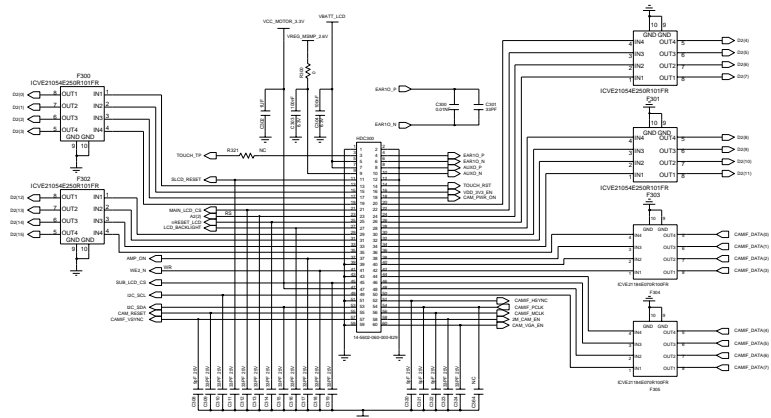
END KEY & EAR SW



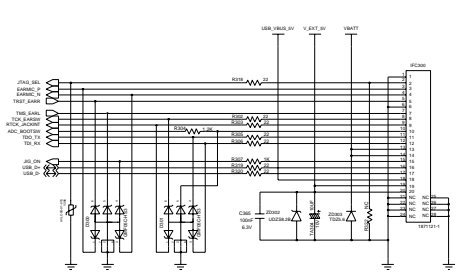
JIG Detect Logic

STATUS	
L	nB0 connected to nA
H	nB1 connected to nA

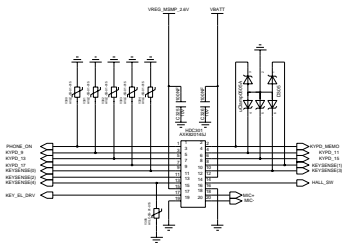
POWER		SAMSUNG	
COMP. NO.	DATE	REV.	
DESIGNER		APPROVER	
SGH-Z560(NTIM0) REV1.1			
DATE	DATE	DATE	DATE
DR. CHOI	DR. YOUNG	DR. YOUNG	DR. CHOI
NO.	NO.	NO.	NO.
DATE	DATE	DATE	DATE
2-04			



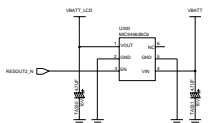
LCD CONNECTOR (HEADER 60PIN 1.5T)



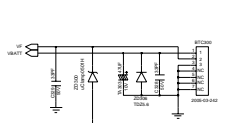
IF CONNECTOR



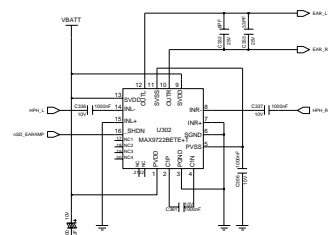
KEY CONNECTOR



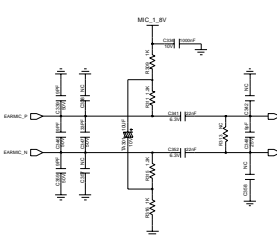
LCD Power SW



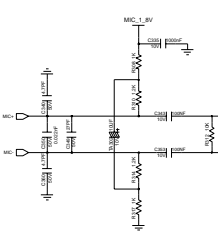
BATTERY CONNECTOR



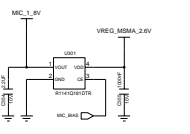
EARSPK AMP



EARMIC PATH



MAIN MIC PATH

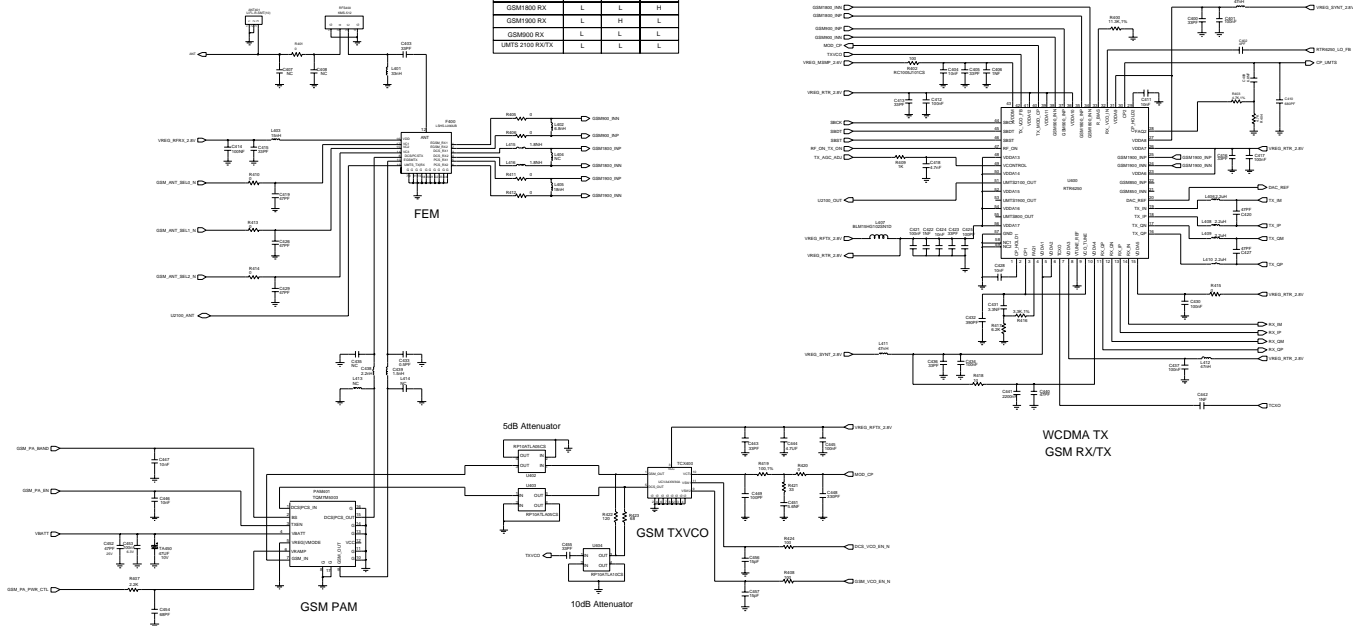


MIC BIAS PWR

PROJECT	SAMSUNG
DESIGN NO.	8000
REV. NO.	1.0
DATE	2008.08.20
DESIGNER	SGH-Z560(NTIMO) REV.1.1
CHECKER	
DATE	
DESIGN NO.	
REV. NO.	
DATE	
DESIGNER	
CHECKER	
DATE	

< GSM >

	MODE		
	VC1	VC2	VC3
GSM900 TX	H	L	L
GSM1800/1900 TX	L	H	H
GSM1800 RX	L	L	H
GSM1900 RX	L	H	L
GSM900 RX	L	L	L
GPRS 2150 RX/TX	L	L	L

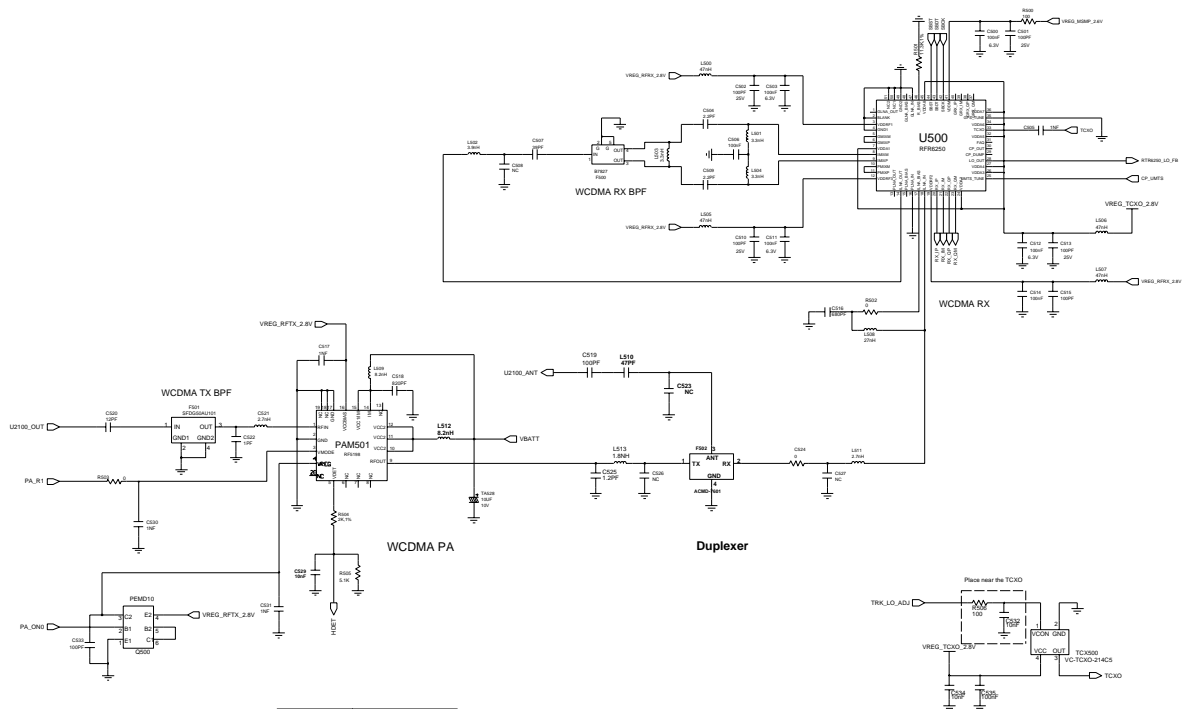


GSM_PA_EN	PA
H	ON
L	OFF

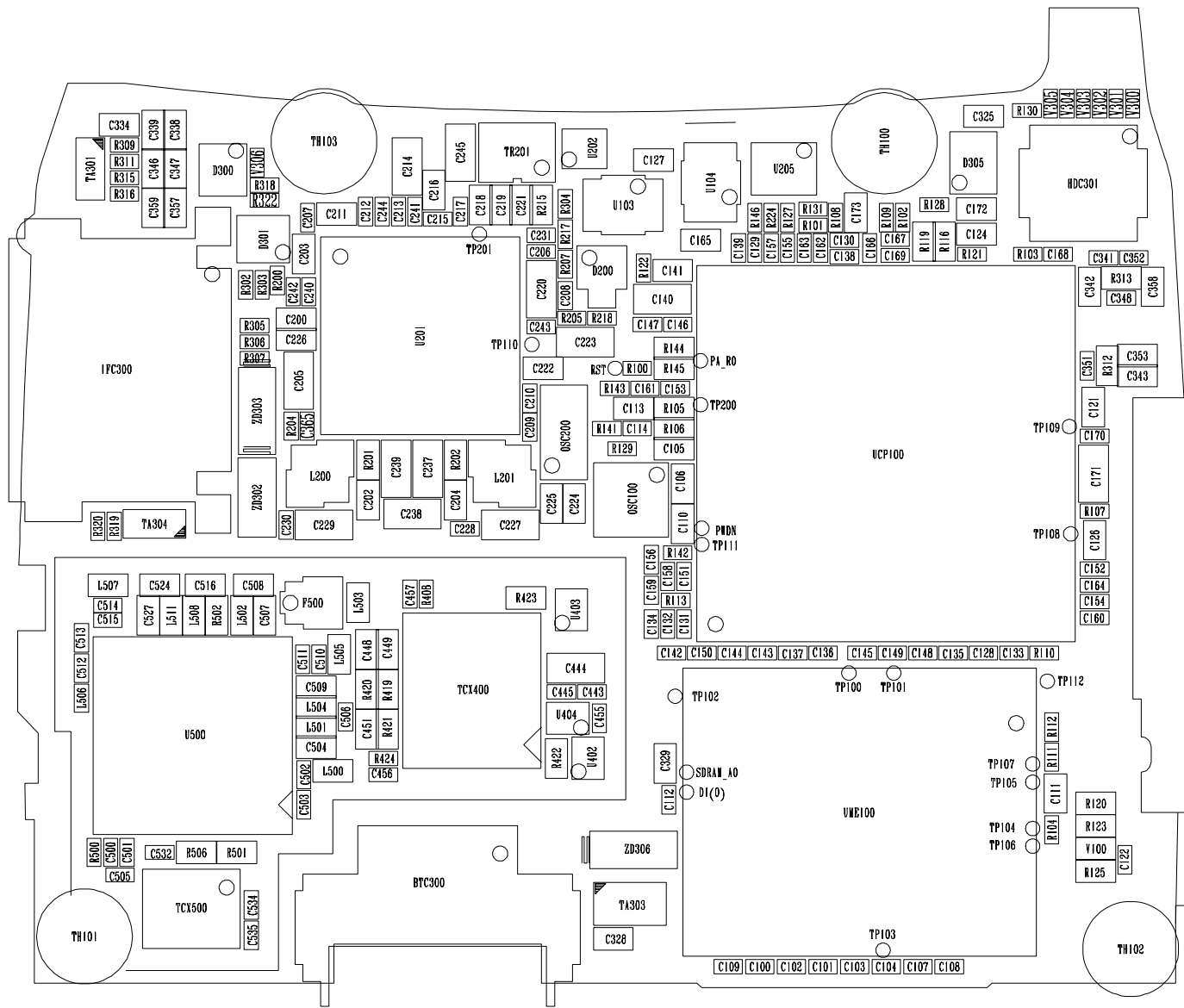
GSM_PA_BAND	MODE
L	GSM900
H	GSM1800

MODE	GSM_VCO_EN	DCS_VCO_EN
GSM 900	H	L
GSM1800/1900	L	H
OFF	H	H

< WCDMA >



PA_R1	GAIN
L	HIGH GAIN
H	LOW GAIN
PA_ON0	PA
L	OFF
H	ON



- R136
- R137
- R133
- R135
- R138
- R134
- R140

