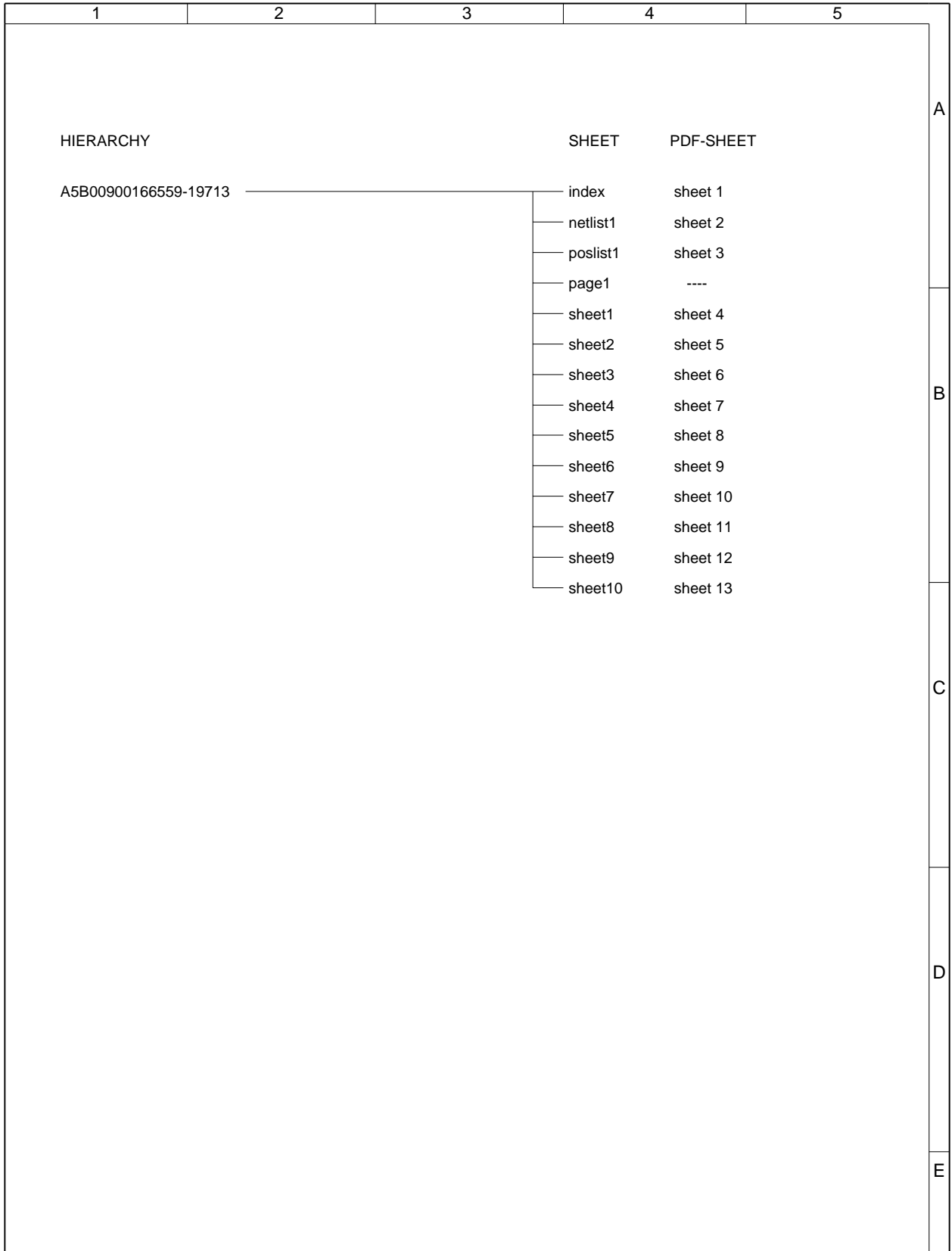


Proprietary data, company confidential.  
All rights reserved

Als Betriebsgeheimnis anvertraut  
Alle Rechte vorbehalten



				DATE	21.10.2003	C65 Hera IFX Assembled B2.1 Layout TOP HIERARCHY LEVEL SCHEMATIC	1:1
				USER	rba		
				APPR'D			
				MP UC RD LPD AAL			
				Siemens AG		94670	index
2	23469	26.01.2005	rba				
1	19714	01.10.2004	rba				
VERS.	CHANGE NUMBER	DATE	NAME	( Created by BOM number: A5B00900166593-23469 )			

Proprietary data, company confidential.  
All rights reserved

Als Betriebsgeheimnis anvertraut  
Alle Rechte vorbehalten

1	2	3	4	5	6	7	8	9	10		
1.5V_DSP /sheet6 7 C /sheet7 8 B	/sheet5 13 E /sheet8 15 F	/sheet3 3 C /sheet3 13 C	CKE /sheet6 10 E /sheet6 15 E /sheet5 7 G	/sheet8 10 A DISPLAY_DAT /sheet4 13 C /sheet4 10 C /sheet3 2 E /sheet8 10 B	/sheet5 13 D /sheet7 3 F	LIGHT_PWM2 /sheet7 6 D /sheet10 3 B /sheet10 8 C	/sheet3 13 C /sheet6 12 E /sheet6 15 E /sheet5 6 G	/sheet4 2 B /sheet4 4 B /sheet5 8 B /sheet1 8 B	/sheet5 6 G VAUDREGA /sheet7 8 C /sheet7 3 E /sheet7 3 C	/sheet1 13 D /sheet1 12 B /sheet1 10 E /sheet1 9 D /sheet1 13 C /sheet7 8 C	
1.5V_UC /sheet6 2 C /sheet6 7 D /sheet7 8 B	AC_TX /sheet5 13 E /sheet8 15 F	CAMERA_DATA_CLK /sheet3 13 B /sheet3 2 D	CLK32 /sheet3 7 E /sheet5 5 B	I2C_DAT /sheet5 13 D /sheet7 3 F	MIC1A /sheet9 6 D /sheet9 5 E /sheet7 2 E	PM_CHARGE_UC /sheet5 5 B /sheet7 3 D	RD /sheet6 12 A /sheet5 7 G	RF_QX /sheet4 4 B /sheet4 2 B /sheet5 8 B /sheet1 8 B	SENSE_IN1 /sheet7 3 D /sheet7 11 F	VBAT /sheet5 9 B /sheet5 15 B	VDD_RTC /sheet6 2 B /sheet7 8 B /sheet7 2 C
1.8V_CIF /sheet3 2 A /sheet7 10 B	ADV /sheet6 15 E /sheet6 12 A /sheet5 6 G	CAMERA_HSYNC /sheet3 3 C /sheet3 13 C	CS3 /sheet6 15 F /sheet5 7 G	DISPLAY_RESET /sheet4 13 D /sheet4 10 D /sheet5 6 A /sheet8 10 A	I2S3_WA /sheet5 13 F /sheet8 10 B	MIC1B /sheet9 5 E /sheet9 6 D /sheet7 2 E	PM_I2S_ADC /sheet5 13 C /sheet7 7 F	REF_GND /sheet7 2 B /sheet7 7 G	SENSE_IN2 /sheet7 3 D /sheet7 11 F	VBOOST /sheet4 10 D /sheet4 13 D /sheet9 8 B /sheet8 10 B /sheet7 11 D	VDD_SIM /sheet7 8 B /sheet10 7 E
1.8V_MEM1 /sheet6 13 F /sheet6 13 F /sheet6 7 E /sheet4 13 C /sheet4 10 C /sheet7 8 B /sheet7 10 B	AKKU_TYP /sheet5 13 A /sheet8 3 B	CAMERA_I2C_CLK /sheet3 8 E /sheet3 13 C	CS_FLASH /sheet6 12 A /sheet5 7 G	DISPLAY_RS /sheet4 13 D /sheet4 10 D /sheet3 2 F /sheet8 10 A	IBOOST_SENSE_P /sheet7 10 E /sheet7 3 C	MICBIAS_F /sheet9 5 D /sheet8 5 F /sheet7 8 E	PM_I2S_CLK /sheet7 3 F /sheet7 7 F	RF_AFC /sheet4 4 B /sheet4 2 B /sheet2 9 B /sheet5 7 A	SIM_CLK /sheet5 11 A /sheet10 7 E	VBOOST_FB /sheet7 3 C /sheet7 9 D	VDD_USB /sheet6 2 C /sheet8 13 E /sheet7 8 B
1.8V_MEM2 /sheet6 11 A /sheet6 9 B /sheet6 8 A /sheet6 12 B /sheet7 7 D /sheet7 8 B /sheet7 10 B	BATT+ /sheet4 10 E /sheet4 13 E /sheet2 10 B /sheet2 14 B /sheet3 10 E /sheet5 15 B	CAMERA_I2C_DATA /sheet3 8 F /sheet3 13 C	CS_FLASH1 /sheet6 15 F /sheet6 12 A /sheet5 7 G	DISP_CS1 /sheet3 4 G /sheet5 2 C	IR_AC_RX /sheet5 14 E /sheet9 10 E	MICEA /sheet8 6 G /sheet8 9 E /sheet7 2 E	PM_I2S_DAC /sheet7 3 F /sheet7 3 F	RF_ANT_DET /sheet4 2 D /sheet4 4 C /sheet5 2 E /sheet1 7 D	SIM_IO /sheet5 11 B /sheet10 7 E	VBUCK /sheet7 2 B /sheet7 11 C	VDD_VIBRA /sheet9 1 C /sheet9 2 B /sheet7 8 B
2.65V /sheet6 4 B /sheet6 7 D /sheet6 4 B /sheet6 2 C /sheet6 5 B /sheet5 4 F /sheet5 10 A /sheet5 15 D /page1 2 A /sheet9 10 F /sheet10 G /sheet8 14 E /sheet8 3 B /sheet7 3 D /sheet7 8 B	BATT+_F /sheet9 2 B /sheet9 8 C /sheet9 14 E /sheet9 5 A /sheet8 12 D /sheet8 11 D /sheet7 3 C /sheet7 3 A /sheet7 2 B /sheet7 3 C /sheet7 10 A /sheet7 2 F /sheet7 3 B /sheet10 3 B /sheet7 8 B	CAM_SENSOR_PD /sheet3 6 E /sheet3 11 E	CTS /sheet8 9 E /sheet8 12 F	EXTBOOST_EN /sheet7 11 D /sheet7 8 D	IR_SEL /sheet5 7 B /sheet9 14 E	MICEB /sheet8 6 F /sheet8 9 F /sheet7 2 E	PM_RESET_1.8V /sheet6 12 B /sheet7 7 C	RF_BAND_SW /sheet4 2 F /sheet4 4 F /sheet2 14 B /sheet5 6 B	STEPDOWN_GND /sheet7 3 B /sheet7 11 C /sheet7 10 C /sheet7 10 C /sheet7 7 F	VBUCK_FB /sheet7 10 C /sheet7 3 C	VREFEXS_GND /sheet7 3 G /sheet7 3 E
2.9V /sheet6 2 B /sheet4 10 C /sheet4 13 C /sheet3 7 B /sheet9 8 C /sheet8 10 B /sheet7 8 B	BATT+_F1 /sheet7 2 B /sheet7 2 B /sheet7 9 D	CAS /sheet6 12 E /sheet6 15 E /sheet5 6 G	D(0:15) /sheet6 15 B /sheet6 11 C /sheet6 12 E /sheet5 9 G	FLASH_RESET /sheet6 12 A /sheet5 4 E	KP_IN0 /sheet5 5 G /sheet9 8 B /sheet9 13 B	MON1 /sheet5 3 D	MON2 /sheet5 3 E /sheet7 7 C	RF_CLK /sheet4 4 A /sheet4 2 A /sheet2 9 B /sheet5 5 B /sheet1 6 F	STEPUP_GND /sheet7 9 E /sheet7 10 D /sheet7 11 E /sheet7 10 E	WAIT /sheet6 15 E /sheet6 13 B /sheet5 6 G	
2.9V_CIF /sheet3 6 D /sheet3 3 E /sheet3 3 E /sheet3 6 D /sheet3 3 A /sheet3 3 A /sheet3 8 B	BC0 /sheet6 10 D /sheet6 15 E /sheet5 7 G	CHARGE_CNTRL /sheet9 4 C /sheet7 10 H /sheet7 6 D	D(3) /sheet6 15 B /sheet6 11 C /sheet6 12 E /sheet5 9 G	GND_MIC /sheet9 4 E /sheet8 9 E /sheet7 7 G /sheet7 7 E	KP_IN1 /sheet5 5 G /sheet9 8 B /sheet9 14 B	MONO1_LP_OUT /sheet9 6 F /sheet8 8 E	MONO1_OUT /sheet9 6 F /sheet8 8 E	RF_TXONPA /sheet4 2 D /sheet4 4 D /sheet2 9 B /sheet5 5 B	VDD_AFC /sheet6 4 B /sheet7 8 C		
A(0:24) /sheet6 15 E /sheet6 10 D /sheet6 8 F /sheet5 12 G	BC1 /sheet6 10 D /sheet6 15 E /sheet5 7 G	CHARGE_SOURCE /sheet7 10 H /sheet7 6 D	D(3) /sheet6 15 B /sheet6 11 C /sheet6 12 E /sheet5 9 G	GSM_TX /sheet2 1 C /sheet1 13 B	KP_IN2 /sheet5 5 G /sheet9 8 B /sheet9 13 B	MONO2_LP_OUT /sheet7 6 E /sheet7 3 E	MONO2_OUT /sheet9 6 G /sheet7 8 E	RF_FE_DTR_DCS /sheet4 2 C /sheet4 4 C /sheet2 2 E /sheet5 6 B	VDD_CAMERA /sheet3 6 F /sheet3 13 C /sheet3 14 E		
AC_CTS /sheet5 13 E /sheet8 15 F	BB_PM_SIN26M /sheet4 4 C /sheet4 2 C /sheet1 9 C /sheet7 3 E	CIF_CLK /sheet3 7 D /sheet3 3 F /sheet5 2 C	DB_ETMCLK /sheet5 3 D	DB_RTCK /sheet5 2 D	KP_IN3 /sheet5 5 G /sheet9 8 B /sheet9 13 B	PHANTOM_BUF_OUT /sheet8 9 E /sheet7 6 E	PIXEL_DATA0 /sheet3 3 C /sheet3 13 B	PM_RTC_INT /sheet3 3 E /sheet7 3 C	TX /sheet8 12 F /sheet8 9 E	VDD_CHARGE /sheet7 3 D /sheet7 9 G	
AC_DCD /sheet5 5 B /sheet8 15 F /sheet8 8 G	BFCLKI /sheet6 13 B /sheet5 6 G	CIF_CS /sheet3 7 C /sheet5 6 A	DB_TDI /sheet5 2 C /page1 4 A	DB_TDO /sheet5 2 C	KP_IN4 /sheet5 3 F /sheet9 8 B /sheet9 14 B	PIXEL_DATA1 /sheet3 3 C /sheet3 13 B	PIXEL_DATA2 /sheet3 3 C /sheet3 13 B	PM_SSC_CS /sheet5 6 B /sheet4 4 F	RX2X /sheet2 5 F /sheet1 15 C	VDD_RF1 /sheet4 4 E /sheet4 2 E /sheet2 13 F /sheet1 11 E /sheet1 13 E /sheet1 9 D /sheet1 6 C /sheet1 12 C /sheet1 11 E /sheet1 9 C /sheet7 8 C	
AC_RTS /sheet5 13 E /sheet8 15 F	BFCLKO /sheet6 15 E /sheet6 13 B /sheet5 6 G	CIF_MRST /sheet3 6 D /sheet5 5 A	DB_TMS /sheet5 2 C /page1 4 B	DB_TRST /sheet5 2 C /page1 4 B	KP_OUT0 /sheet5 4 F /sheet9 8 B	PIXEL_DATA3 /sheet3 3 C /sheet3 13 B	PIXEL_DATA4 /sheet3 3 C /sheet3 13 B	PM_SSC_MRST /sheet5 14 D /sheet7 6 F	RX3X /sheet2 5 F /sheet1 15 D	VDD_RF2 /sheet4 2 E /sheet4 4 E /sheet2 5 A /sheet1 13 E	
AC_RX /sheet5 13 E /sheet8 15 F	BOOST_OUT /sheet7 10 E /sheet7 6 C	CIF_MTSR /sheet3 7 D /sheet3 3 F /sheet5 2 C	DCD /sheet8 9 E /sheet8 12 F	DCS_TX /sheet2 1 B /sheet1 13 B	KP_OUT1 /sheet5 4 F /sheet9 8 B	PIXEL_DATA4 /sheet3 3 C /sheet3 13 B	PIXEL_DATA5 /sheet3 3 C /sheet3 13 B	POWER /sheet8 9 E /sheet8 9 E /sheet7 9 F /sheet7 8 F	SDCLKI /sheet6 15 E /sheet6 8 D /sheet6 8 D /sheet5 6 G /sheet7 8 B	VDD_RF2 /sheet4 2 E /sheet4 4 E /sheet2 5 A /sheet1 13 E	
	BREF /sheet5 10 B /sheet5 15 A	CIF_RS /sheet3 3 F /sheet3 7 C /sheet5 2 C	DCS_TX_X /sheet2 1 A /sheet1 13 B	DCS_TX_X /sheet2 1 A /sheet1 13 B	KP_OUT2 /sheet5 4 E /sheet9 8 B	PIXEL_DATA6 /sheet3 3 C /sheet3 13 C	PIXEL_DATA7 /sheet3 3 C	RAS /sheet8 9 E /sheet8 9 E /sheet7 9 F /sheet7 8 F	SDCLKO /sheet6 15 E /sheet6 8 E		
	CAMERA_CLK /sheet3 2 G	CIF_VSYNC /sheet3 3 F /sheet3 3 D /sheet5 13 F /sheet8 8 F	DISPLAY_CLK /sheet4 13 C /sheet4 10 C /sheet3 2 E /sheet8 10 A	DISPLAY_CS1 /sheet4 13 D /sheet4 10 D /sheet3 2 G	LIGHT_KP /sheet9 8 B /sheet10 8 C	PIXEL_DATA7 /sheet3 3 C					
				I2C_CLK /sheet8 10 A	LIGHT_PWM1 /sheet7 6 D /sheet10 3 B						

DATE	21.10.2003	C65 Hera IFX Assembled		1:1		
USER	rba	B2.1 Layout				
APPR'D		TOP HIERARCHY LEVEL				
MP UC RD LPD AAL				netlist1		
SCHEMATIC						
2	23469	26.01.2005	rba	Siemens AG	94670	netlist1
1	19714	01.10.2004	rba			
VERS.	CHANGE NUMBER	DATE	NAME	( Created by BOM number: A5B00900166593-23469 )		

Proprietary data, company confidential.  
All rights reserved

Als Betriebsgeheimnis anvertraut  
Alle Rechte vorbehalten

	1	2	3	4	5	6	7	8	9	10
A	C1000 /sheet5 3 E C1002 /sheet5 1 E C1003 /sheet5 1 E C1004 /sheet5 8 A C1005 /sheet5 6 A C1008 /sheet5 14 D C1009 /sheet5 15 D C1011 /sheet5 10 B C1012 /sheet5 14 B C1013 /sheet5 14 C C1014 /sheet5 15 C C1018 /sheet5 13 E C1019 /sheet5 13 E C1020 /sheet5 13 E C1038 /sheet5 13 F C1039 /sheet5 11 A C1040 /sheet5 3 E C1110 /sheet6 5 C C1120 /sheet6 2 C C1121 /sheet6 2 C C1122 /sheet6 2 B C1123 /sheet6 3 B C1124 /sheet6 3 B C1125 /sheet6 3 B C1126 /sheet6 4 C C1127 /sheet6 4 C C1128 /sheet6 5 C C1129 /sheet6 5 B C1130 /sheet6 5 C C1131 /sheet6 6 D C1132 /sheet6 6 D C1133 /sheet6 7 D C1134 /sheet6 7 D C1135 /sheet6 7 D C1136 /sheet6 6 E C1137 /sheet6 6 E C1139 /sheet6 6 E C1140 /sheet6 2 C C1141 /sheet6 7 C C1200 /sheet6 8 B C1201 /sheet6 9 B C1202 /sheet6 12 G C1203 /sheet6 12 G C1204 /sheet6 12 G C1205 /sheet6 12 G C1206 /sheet6 9 B C1207 /sheet6 13 G C1208 /sheet6 9 B C1209 /sheet6 9 B C1210 /sheet6 11 B C1211 /sheet6 9 B C1220 /sheet6 9 A C1301 /sheet7 2 B C1302 /sheet7 4 A C1303 /sheet7 4 B C1304-2 /sheet7 2 B C1304-1 /sheet7 2 B C1305 /sheet7 10 B C1306 /sheet7 3 B C1307 /sheet7 3 B C1308 /sheet7 3 D C1309 /sheet7 4 D C1310 /sheet7 4 D C1311 /sheet7 4 D C1312 /sheet7 4 D C1313 /sheet7 4 D C1314 /sheet7 4 D C1315-2 /sheet7 10 B C1315-1 /sheet7 10 B C1316 /sheet7 7 C C1317 /sheet7 3 E C1318-2 /sheet7 11 B C1318-1 /sheet7 11 B C1319 /sheet7 3 E C1320 /sheet7 8 C C1321 /sheet7 3 E C1322 /sheet7 3 E C1323 /sheet7 3 E C1324 /sheet7 3 E C1325 /sheet7 3 E C1326 /sheet7 3 F C1327 /sheet7 3 F C1328 /sheet7 4 F C1329-2 /sheet7 6 B C1329-1 /sheet7 6 B C1330-1 /sheet7 6 B C1330-2 /sheet7 6 B	C1331-2 /sheet7 7 B C1331-1 /sheet7 7 B C1332-1 /sheet7 7 B C1332-2 /sheet7 7 B C1333 /sheet7 6 E C1334 /sheet7 6 E C1336 /sheet7 10 D C1337 /sheet7 6 B C1338 /sheet7 8 B C1339 /sheet7 7 C C1340 /sheet7 7 C C1341 /sheet7 7 C C1342 /sheet7 7 C C1343 /sheet7 7 C C1344 /sheet7 8 B C1345 /sheet7 8 C C1346 /sheet7 7 E C1347 /sheet7 7 E C1348 /sheet7 7 E C1349 /sheet7 4 E C1350 /sheet7 7 F C1352 /sheet7 11 D C1354 /sheet7 11 C C1355 /sheet7 11 D C1356 /sheet7 11 D C1357 /sheet7 10 D C1358 /sheet7 11 D C1360 /sheet7 10 F C1361 /sheet7 10 F C1362 /sheet7 11 F C1381 /sheet7 4 E C1382 /sheet7 4 E C1383 /sheet7 2 E C1384 /sheet7 2 E C1385 /sheet7 2 E C1386 /sheet7 2 E C1387 /sheet7 4 E C1391 /sheet7 6 E C1399 /sheet7 6 E C1400 /sheet8 3 B C1401 /sheet8 4 B C1402 /sheet8 4 B C1405 /sheet8 4 B C1426 /sheet8 2 B C1502 /sheet8 6 F C1504 /sheet8 4 D C1506 /sheet8 9 F C1507 /sheet8 6 D C1510 /sheet8 7 F C1512 /sheet8 7 F C1513 /sheet8 9 F C1514 /sheet8 8 F C1515 /sheet8 12 D C1522 /sheet8 5 F C1523 /sheet8 5 D C1524 /sheet8 7 F C1527 /sheet8 11 D C1528 /sheet8 14 D C1541 /sheet8 6 F C1601 /sheet10 4 F C1602 /sheet10 5 F C1603 /sheet10 5 F C1604 /sheet10 5 F C1605 /sheet10 6 F C1606 /sheet10 5 F C1705 /sheet9 4 F C1708 /sheet9 4 F C1709 /sheet9 4 F C1901 /sheet9 3 D C1902 /sheet9 3 E C1904 /sheet9 3 E C2100 /sheet9 3 B C2101 /sheet9 3 B C2110 /sheet9 6 A C2130 /sheet9 9 C C2131 /sheet9 9 C C2132 /sheet9 10 C C2133 /sheet9 10 C C2200 /sheet8 9 B C2201 /sheet8 9 B C2202 /sheet8 9 B C2203 /sheet8 8 B C2231 /sheet8 9 B C2232 /sheet8 10 B C2233 /sheet8 9 B C2235 /sheet8 10 B C2320 /sheet10 7 B	C2321 /sheet10 5 A C2322 /sheet10 5 A C2630 /sheet9 14 E C2631 /sheet9 10 F C2632 /sheet9 11 F C2633 /sheet9 13 E C2634 /sheet9 10 E C2635 /sheet9 13 E C2637 /sheet9 12 E C2821 /sheet10 7 C C2822 /sheet10 5 C C2823 /sheet10 5 C C3600 /sheet3 3 B C3601 /sheet3 3 B C3602 /sheet3 3 B C3603 /sheet3 3 B C3604 /sheet3 10 F C3605 /sheet3 11 C C3606 /sheet3 11 E C3607 /sheet3 11 F C3608 /sheet3 12 F C3609 /sheet3 13 F C3610 /sheet3 2 C C3611 /sheet3 2 D C3621 /sheet3 3 B C3803 /sheet2 14 F C3804 /sheet2 15 F C3805 /sheet2 13 G C3980 /sheet2 13 C C3981 /sheet2 10 B C3982 /sheet2 10 B C3983 /sheet2 11 B C3984 /sheet2 12 C C3985 /sheet2 13 B C3986 /sheet2 13 B C3988 /sheet2 13 B C3989 /sheet2 14 B C3990 /sheet2 10 C C3991 /sheet2 11 C C3992 /sheet2 13 C C3993 /sheet2 14 C C3994 /sheet2 13 C C3996 /sheet2 10 B C3997 /sheet2 10 B C4001 /sheet1 2 D C4002 /sheet1 2 D C4003 /sheet1 3 D C4004 /sheet1 3 D C4005 /sheet1 3 D C4006 /sheet1 5 D C4007 /sheet1 5 E C4008 /sheet1 6 D C4009 /sheet1 7 D C4010 /sheet1 10 D C4011 /sheet1 7 C C4012 /sheet1 7 D C4019 /sheet1 6 C C4020 /sheet1 7 D C4021 /sheet1 8 F C4022 /sheet1 8 F C4023 /sheet1 8 F C4024 /sheet1 10 E C4025 /sheet1 10 E C4026 /sheet1 10 E C4027 /sheet2 8 B C4028 /sheet1 10 E C4029 /sheet1 11 E C4030 /sheet1 12 E C4031 /sheet1 12 E C4032 /sheet1 13 E C4034 /sheet2 5 C C4037 /sheet1 9 F C4038 /sheet1 10 F C4039 /sheet1 10 F C4040 /sheet1 11 F C4044 /sheet2 6 C C4063 /sheet1 12 B C4066 /sheet1 12 C C4067 /sheet1 12 C C4068 /sheet1 13 C C4069 /sheet1 9 C C4070 /sheet1 9 C C4071 /sheet1 9 C C4074 /sheet2 2 F C4075 /sheet2 2 F C4076 /sheet2 6 F C4078 /sheet2 7 F	C4079 /sheet1 9 C C4095 /sheet2 4 C C4096 /sheet2 3 A C4099 /sheet2 5 B D1000-2 /sheet6 1 E D1000-1 /sheet5 12 F D1000-3 /sheet5 1 A D1201 /sheet6 10 F D1203 /sheet6 10 D D1300 /sheet7 4 F D3601 /sheet3 4 F D4001 /sheet1 10 D D4031 /sheet2 4 F L1300 /sheet7 2 B L1301 /sheet7 10 C L1302 /sheet7 10 D L1303 /sheet7 2 B L1318 /sheet7 10 A L1320 /sheet7 7 C L1331 /sheet7 10 D L2633 /sheet9 13 E L3803 /sheet2 14 F L3994 /sheet2 13 B L3995 /sheet2 14 C L4001 /sheet1 6 D L4012 /sheet2 2 A L4013 /sheet2 2 B L4014 /sheet2 6 C L4030 /sheet2 7 B L4031 /sheet2 8 B L4042 /sheet2 7 F L4044 /sheet2 3 C L4049 /sheet1 15 D L4051 /sheet1 14 E L4052 /sheet1 14 C L4053 /sheet1 15 D L4054 /sheet1 15 C L4055 /sheet1 15 E L4056 /sheet1 15 E L4058 /sheet1 15 C L4059 /sheet1 14 D L4060 /sheet1 15 C L4061 /sheet1 15 D L4062 /sheet1 15 E N1330 /sheet7 11 D N1501 /sheet8 11 E N3600 /sheet3 11 F N3981 /sheet2 11 C R101 /page1 3 C R1000 /sheet5 3 F R1001 /sheet5 3 G R1002 /sheet5 2 E R1006 /sheet5 3 E R1012 /sheet5 7 B R1014 /sheet5 10 B R1015 /sheet5 9 B R1016 /sheet5 13 A R1018 /sheet5 13 A R1021 /sheet5 15 A R1022 /sheet5 15 B R1023 /sheet5 15 C R1024 /sheet5 15 D R1025 /sheet5 15 D R1026 /sheet5 3 C R1027 /sheet5 3 C R1028 /sheet5 3 C R1029 /sheet5 3 C R1030 /sheet5 5 A R1031 /sheet5 6 A R1032 /sheet5 7 B R1038 /sheet5 10 A R1039 /sheet5 9 A R1040 /sheet5 2 F R1041 /sheet5 3 F R1042 /sheet5 2 G R1043 /sheet5 3 F R1045 /sheet5 3 G R1046 /sheet5 2 G R1047 /sheet5 3 G R1048 /sheet5 2 G R1049 /sheet5 3 G R1050 /sheet5 2 G R1051 /sheet5 3 G R1052 /sheet5 2 G R1130 /sheet6 2 C R1200 /sheet6 11 A R1210 /sheet6 9 B	R1211 /sheet6 9 D R1300 /sheet7 3 B R1302 /sheet7 3 B R1303 /sheet7 2 C R1304 /sheet7 3 C R1305 /sheet7 3 C R1308 /sheet7 3 D R1309 /sheet7 7 D R1311 /sheet7 3 B R1315 /sheet7 7 F R1320 /sheet7 7 D R1328 /sheet7 7 E R1340 /sheet7 11 D R1341 /sheet7 11 D R1342 /sheet7 9 D R1343 /sheet7 10 E R1344 /sheet7 11 F R1353 /sheet7 9 G R1378 /sheet7 10 B R1399 /sheet7 7 C R1500 /sheet8 4 F R1501 /sheet8 4 F R1502 /sheet8 5 F R1503 /sheet8 8 E R1504 /sheet8 8 E R1505 /sheet8 6 F R1506 /sheet8 9 G R1508 /sheet8 8 F R1509 /sheet8 14 D R1510 /sheet8 14 E R1511 /sheet8 14 E R1512 /sheet8 7 D R1514 /sheet8 11 D R1515 /sheet8 12 D R1516 /sheet8 11 D R1524 /sheet8 6 G R1525 /sheet8 6 F R1591 /sheet8 9 E R1612 /sheet10 4 E R1613 /sheet10 4 E R1614 /sheet10 7 E R1615 /sheet10 4 E R1703 /sheet9 5 F R1704 /sheet9 5 F R1901 /sheet9 4 D R1902 /sheet9 4 E R1926 /sheet9 5 D R1927 /sheet9 5 D R2100 /sheet9 2 B R2101 /sheet9 1 C R2102 /sheet9 2 D R2103 /sheet9 3 C R2104 /sheet9 3 C R2200 /sheet8 8 B R2300 /sheet10 4 B R2301 /sheet10 4 C R2310 /sheet10 4 A R2311 /sheet10 6 B R2632 /sheet9 12 E R2635 /sheet9 13 E R2727 /sheet9 8 B R2728 /sheet9 8 C R2729 /sheet9 8 C R2820 /sheet10 8 C R2821 /sheet10 7 C R2872 /sheet10 4 C R3600 /sheet3 6 F R3601 /sheet3 6 F R3602 /sheet3 13 C R3603 /sheet3 3 D R3604 /sheet3 13 B R3605 /sheet3 13 B R3606 /sheet3 13 B R3607 /sheet3 13 B R3608 /sheet3 13 B R3609 /sheet3 13 B R3610 /sheet3 13 B R3611 /sheet3 13 B R3612 /sheet3 13 C R3613 /sheet3 13 C R3614 /sheet3 13 C R3615 /sheet3 13 C R3616 /sheet3 13 C R3617 /sheet3 13 C R3618 /sheet3 11 C R3619 /sheet3 11 F R3625 /sheet3 3 E	R3626 /sheet3 2 E R3627 /sheet3 3 F R3629 /sheet3 3 G R3630 /sheet3 3 F R3631 /sheet3 3 F R3632 /sheet3 3 F R3633 /sheet3 3 F R3634 /sheet3 3 G R3635 /sheet3 6 E R3640 /sheet3 6 C R3801 /sheet2 13 F R3802 /sheet2 13 F R3803 /sheet2 14 F R3805 /sheet2 13 F R3981 /sheet2 10 B R3982 /sheet2 10 B R3983 /sheet2 14 B R4001 /sheet1 1 D R4002 /sheet1 2 D R4003 /sheet1 2 D R4004 /sheet1 1 D R4005 /sheet1 3 D R4006 /sheet1 4 D R4007 /sheet1 5 C R4008 /sheet1 6 D R4011 /sheet1 5 D R4012 /sheet1 6 D R4013 /sheet1 6 C R4014 /sheet2 2 A R4019 /sheet1 6 D R4021 /sheet1 10 D R4022 /sheet1 9 F R4024 /sheet1 10 F R4025 /sheet1 10 F R4035 /sheet2 8 F R4036 /sheet2 2 E R4038 /sheet2 2 E R4043 /sheet2 2 C R4044 /sheet2 4 C R4064 /sheet1 9 D R4077 /sheet2 8 F R4098 /sheet1 11 F S2700 /sheet9 13 B TP1246 /sheet6 10 B TP1247 /sheet6 8 A TP3980 /sheet2 10 B TP3601 /sheet3 13 E TP3600 /sheet3 11 E TP1022 /sheet5 9 B TP1014 /sheet5 15 A TP1013 /sheet5 13 A TP1012 /sheet5 13 A TP4002 /sheet1 9 D TP4003 /sheet1 2 B TP4004 /sheet1 7 D TP4005 /sheet1 9 D TP1509 /sheet8 14 D TP1311 /sheet7 8 B TP1310 /sheet7 8 B TP1334 /sheet7 7 C TP1317 /sheet7 8 B TP1321 /sheet7 7 C TP1320 /sheet7 7 C TP1318 /sheet7 6 C TP1309 /sheet7 8 B TP1327 /sheet7 10 C TP1308 /sheet7 8 B TP1302 /sheet7 4 D TP1312 /sheet7 8 B TP1306 /sheet7 8 B TP1307 /sheet7 8 B V1302 /sheet7 10 C V1303 /sheet7 11 D V1304 /sheet7 10 E V1305-2 /sheet7 10 G V1305-1 /sheet7 10 G V1400 /sheet8 3 B V1500 /sheet8 9 G V1605 /sheet10 3 F V2100 /sheet9 4 A V2101 /sheet9 3 B V2102 /sheet9 2 C V2302-2 /sheet10 6 A V2302-1 /sheet10 5 B V2303 /sheet10 3 B V2650 /sheet9 12 E V2821-1 /sheet10 6 C	V2821-2 /sheet10 6 C V4001-1 /sheet1 6 D V4001-2 /sheet1 6 D V4002 /sheet1 3 D X1000 /sheet5 13 F X1300 /sheet7 3 H X1400 /sheet8 2 B X1504 /sheet8 2 E X1604 /sheet10 2 G X1700 /sheet9 1 G X2200 /sheet8 9 C X2202 /sheet8 7 A X2705 /sheet9 11 B X3551 /sheet3 7 G X3552 /sheet3 8 G X3600 /sheet3 10 C X3800 /sheet2 12 F X4001 /sheet1 13 F Z1000 /sheet5 2 E Z1500 /sheet8 13 F Z4001 /sheet1 4 D Z4011 /sheet2 6 B Z4012 /sheet2 6 C			
B										
C										
D										
E										

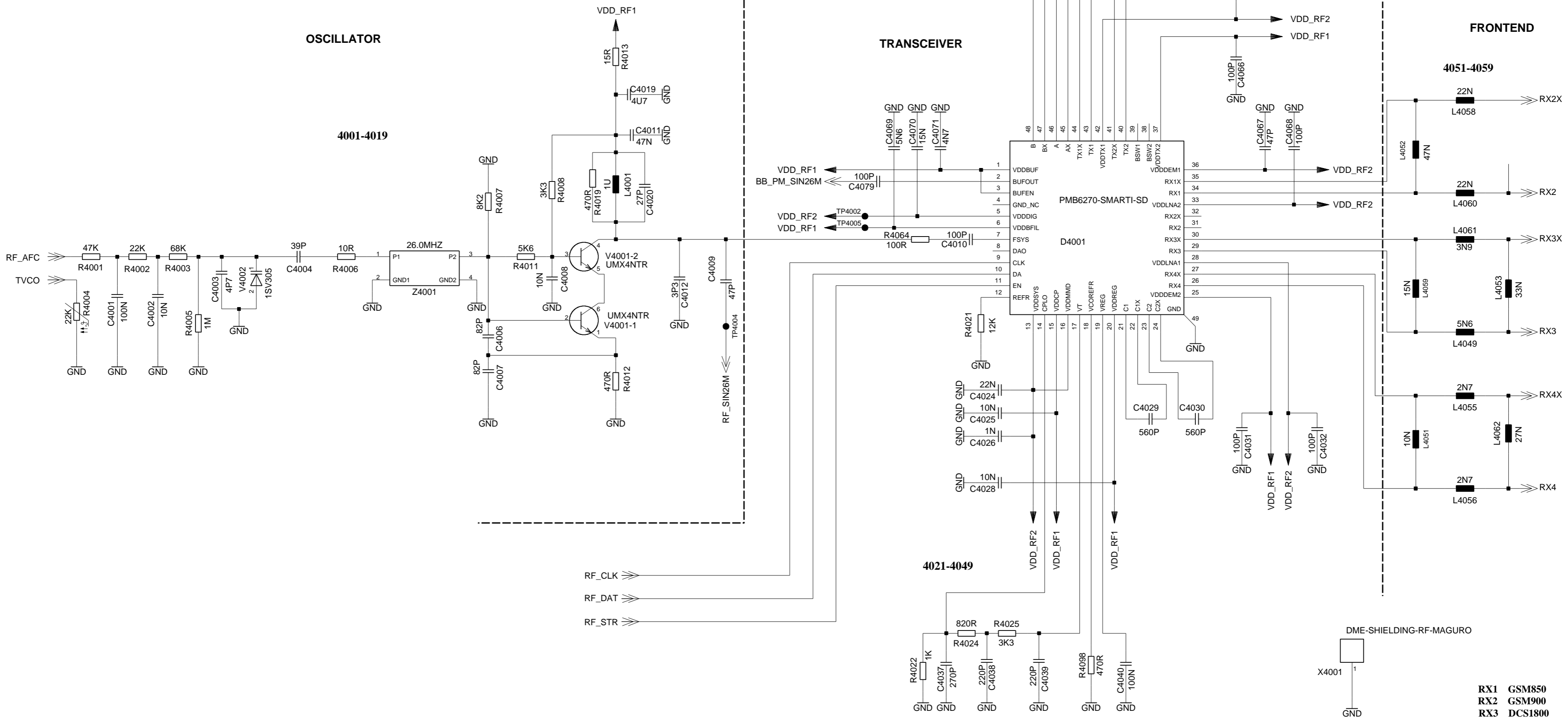
DATE	21.10.2003					
USER	rba					
APPR'D						
MP UC RD LPD AAL						
2	23469	26.01.2005	rba	Siemens AG	94670	poslist1
1	19714	01.10.2004	rba			
VERS.	CHANGE NUMBER	DATE	NAME	( Created by BOM number: A5B00900166593-23469 )		

Proprietary data. Company confidential.  
all rights reserved

Als Betriebsgeheimnis anvertraut  
alle Rechte vorbehalten

# RF\_IFX\_SMARTI

● TP4003 n.c.



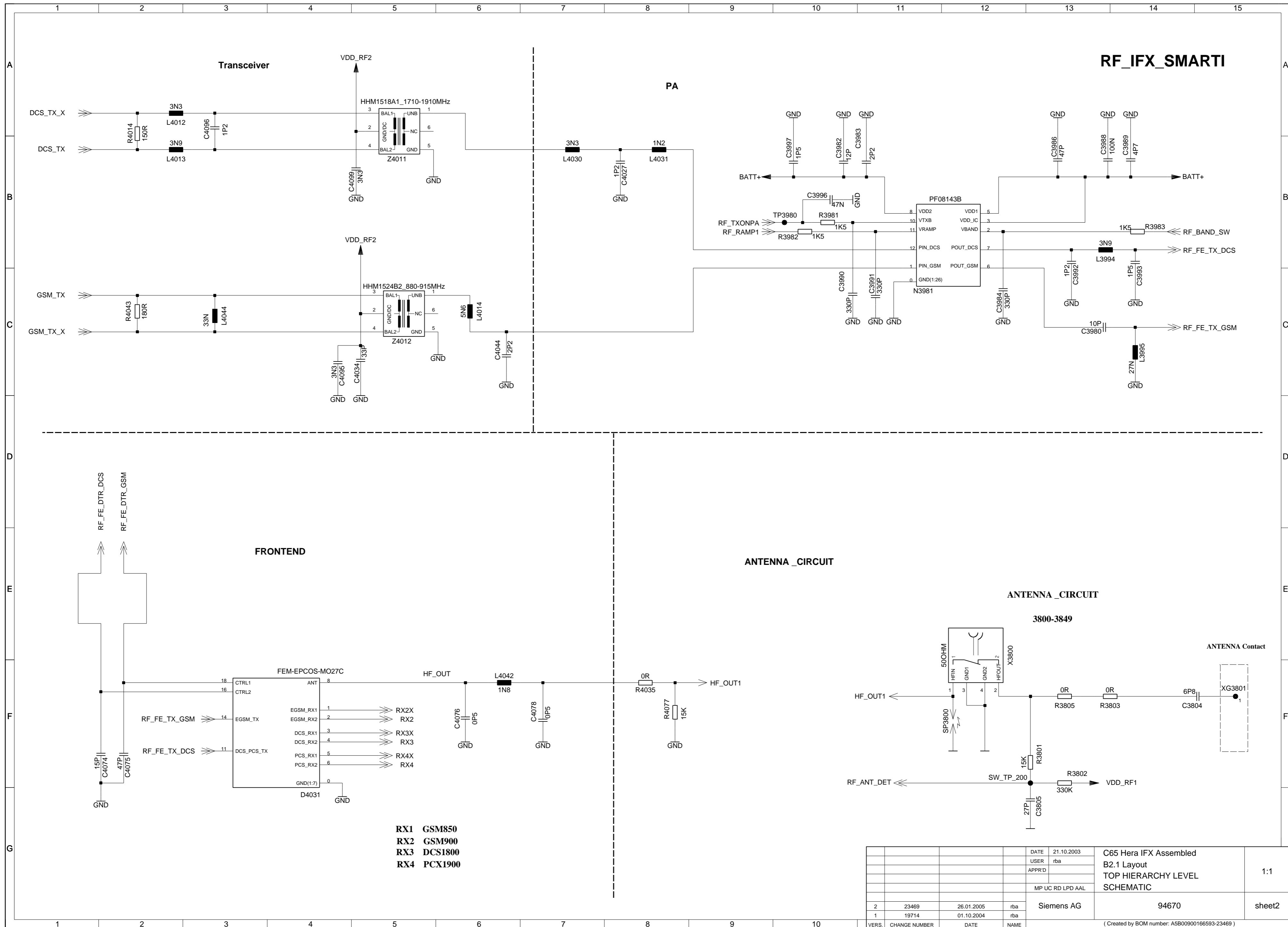
**RX1 GSM850**  
**RX2 GSM900**  
**RX3 DCS1800**  
**RX4 PCX1900**

DATE	21.10.2003	C65 Hera IFX Assembled B2.1 Layout TOP HIERARCHY LEVEL SCHEMATIC	1:1		
USER	rba				
APPRD					
MP UC RD LPD AAL		Siemens AG	sheet1		
2	23469			26.01.2005	rba
1	19714			01.10.2004	rba
VERS.	CHANGE NUMBER	DATE	NAME		

( Created by BOM number: A5B00900166593-23469 )

Proprietary data. Company confidential.  
all rights reserved

Als Betriebsgeheimnis anvertraut  
alle Rechte vorbehalten



- RX1 GSM850**
- RX2 GSM900**
- RX3 DCS1800**
- RX4 PCX1900**

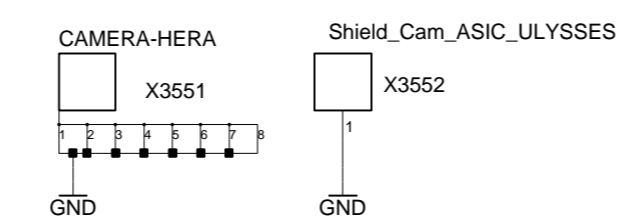
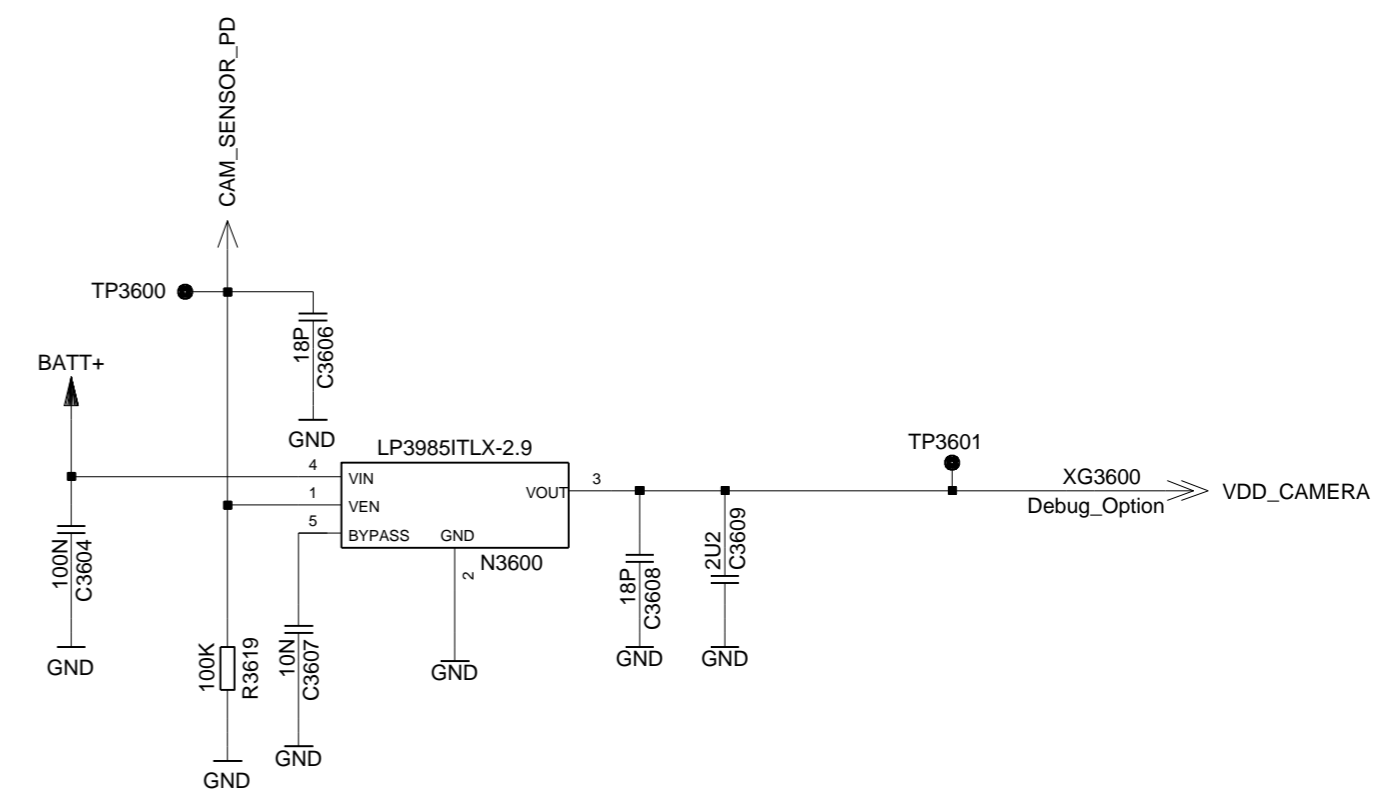
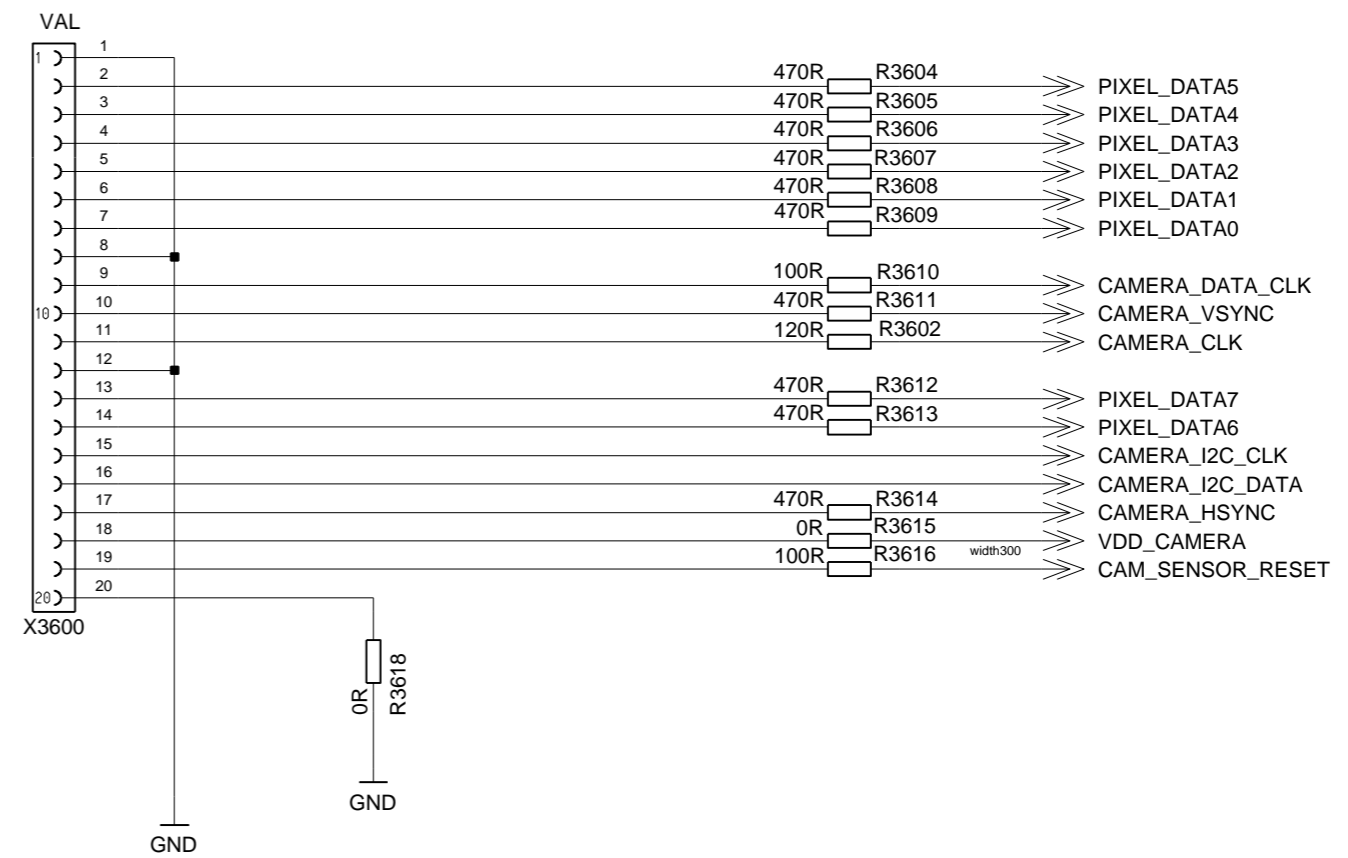
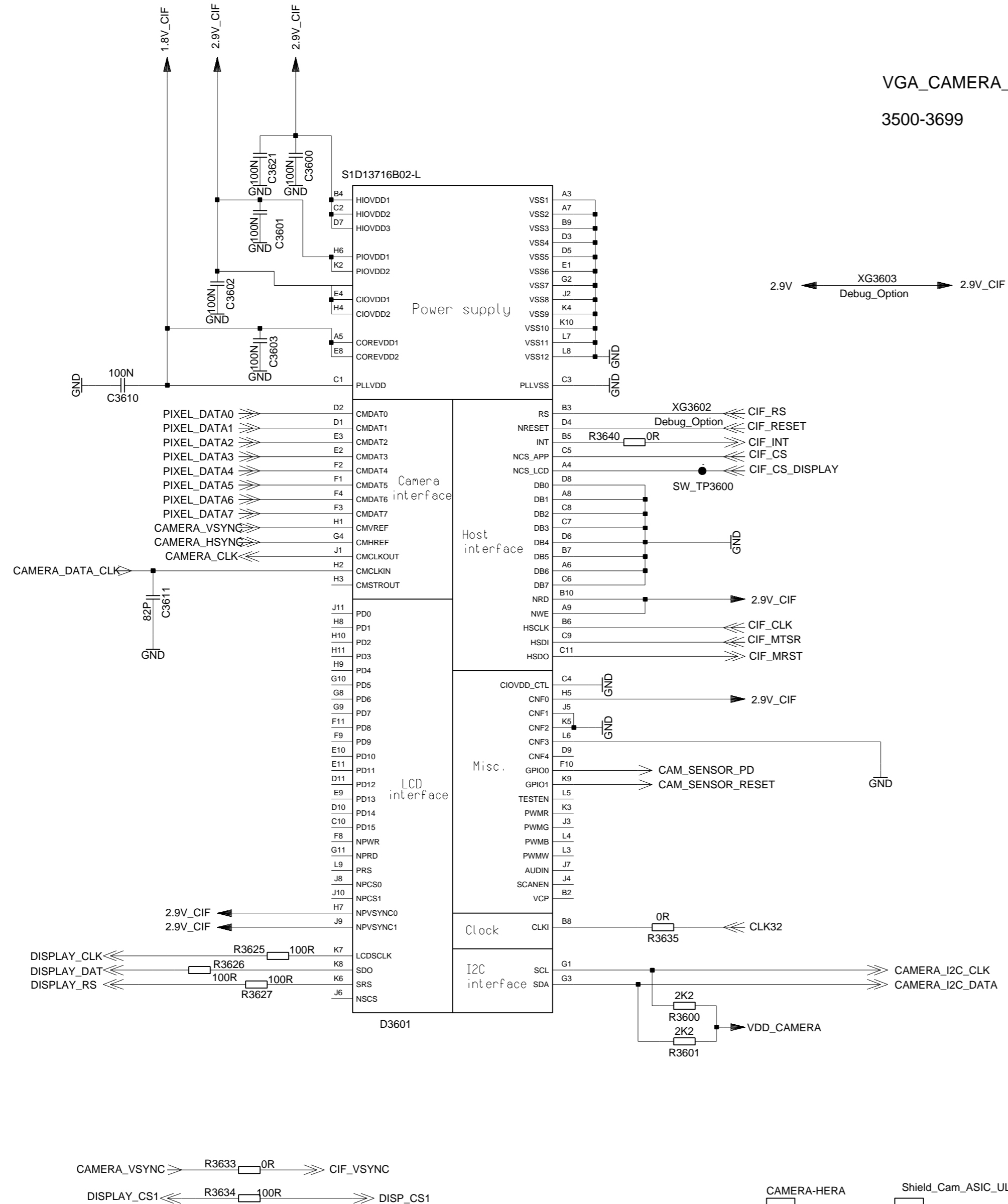
DATE	21.10.2003	C65 Hera IFX Assembled B2.1 Layout TOP HIERARCHY LEVEL SCHEMATIC	1:1
USER	rba		
APPRD			
MP UC RD LPD AAL			
2	23469	26.01.2005	rba
1	19714	01.10.2004	rba
VERS.	CHANGE NUMBER	DATE	NAME
			Siemens AG
			94670
			sheet2

( Created by BOM number: A5B00900166593-23469 )

Proprietary data. Company confidential.  
all rights reserved

Als Betriebsgeheimnis anvertraut  
alle Rechte vorbehalten

### VGA\_CAMERA\_1 3500-3699



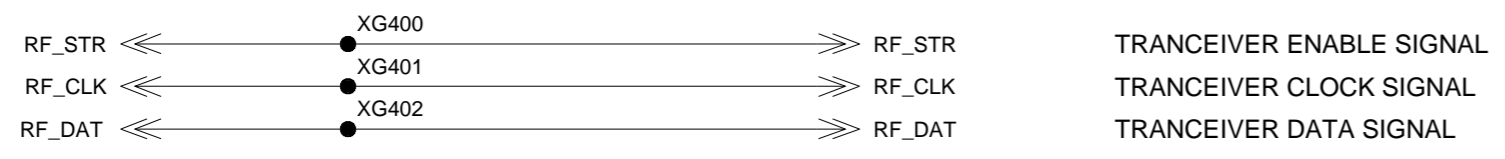
DATE	21.10.2003	C65 Hera IFX Assembled B2.1 Layout TOP HIERARCHY LEVEL SCHEMATIC	1:1		
USER	rba				
APPRD					
MP UC RD LPD AAL		Siemens AG	94670		
2	23469			26.01.2005	rba
1	19714			01.10.2004	rba
VERS.	CHANGE NUMBER	DATE	NAME	( Created by BOM number: A5B00900166593-23469 )	

Proprietary data. Company confidential.  
all rights reserved

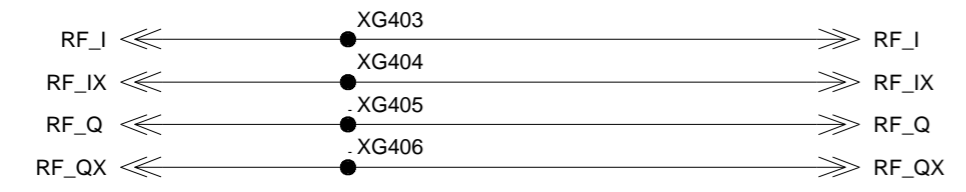
Als Betriebsgeheimnis anvertraut  
alle Rechte vorbehalten

# HIT\_POINTS LOGIK/HF\_PART\_1

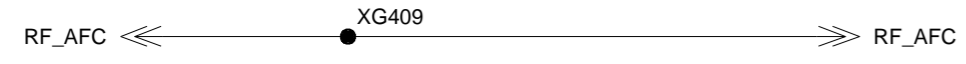
400-449



TRANCEIVER ENABLE SIGNAL  
 TRANCEIVER CLOCK SIGNAL  
 TRANCEIVER DATA SIGNAL



Bidirectional analoue RX/TX modulartet signal  
 Baseband signals



Reference frequency correction



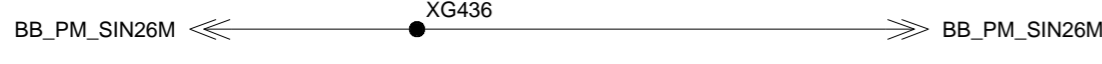
DCSTX enable Asic for Hitachisolution  
 GSMTX enable Asic for Hitachisolution



analogue power amplifier ramping signal



26 MHz reference frequency



Second 26 MHz reference frequency



Power up of power controller



Temperature sensor X-tal



DETECTION internal/external Antenna



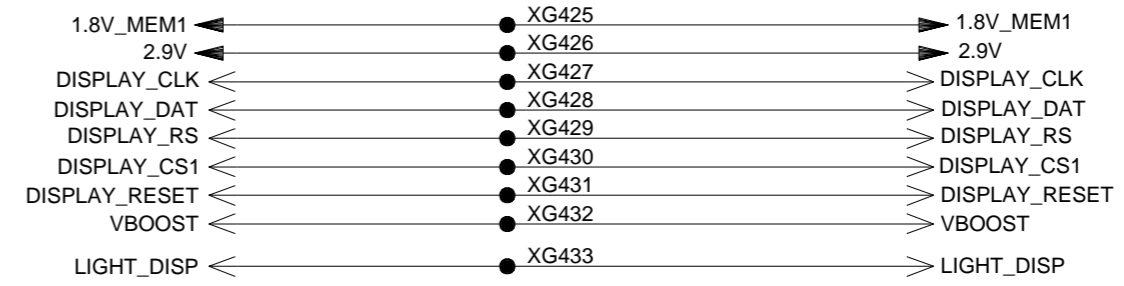
programmed voltage 1



programmed voltage 2



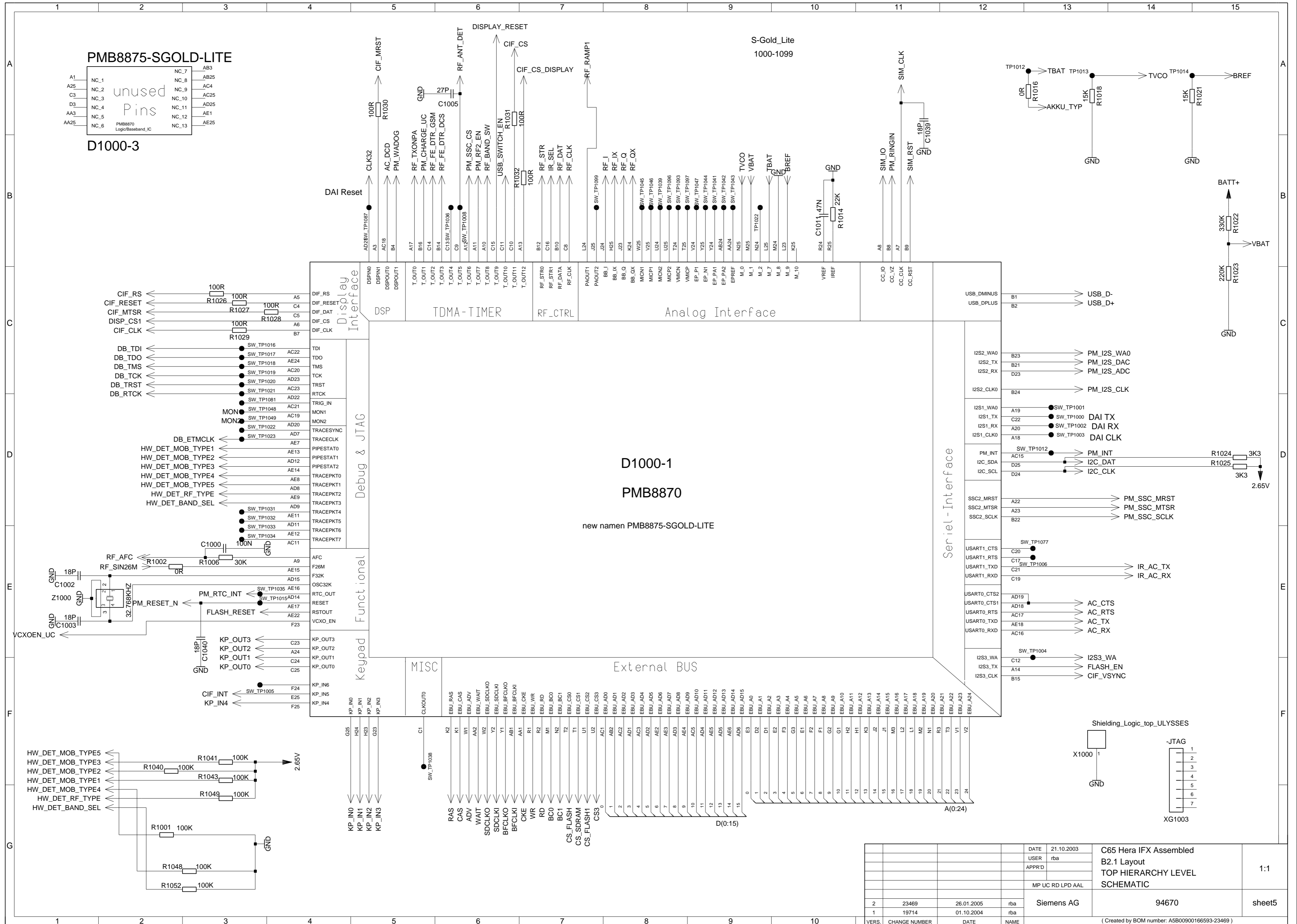
swiched LOW- / HIGH-band



SAR-GND-PAD

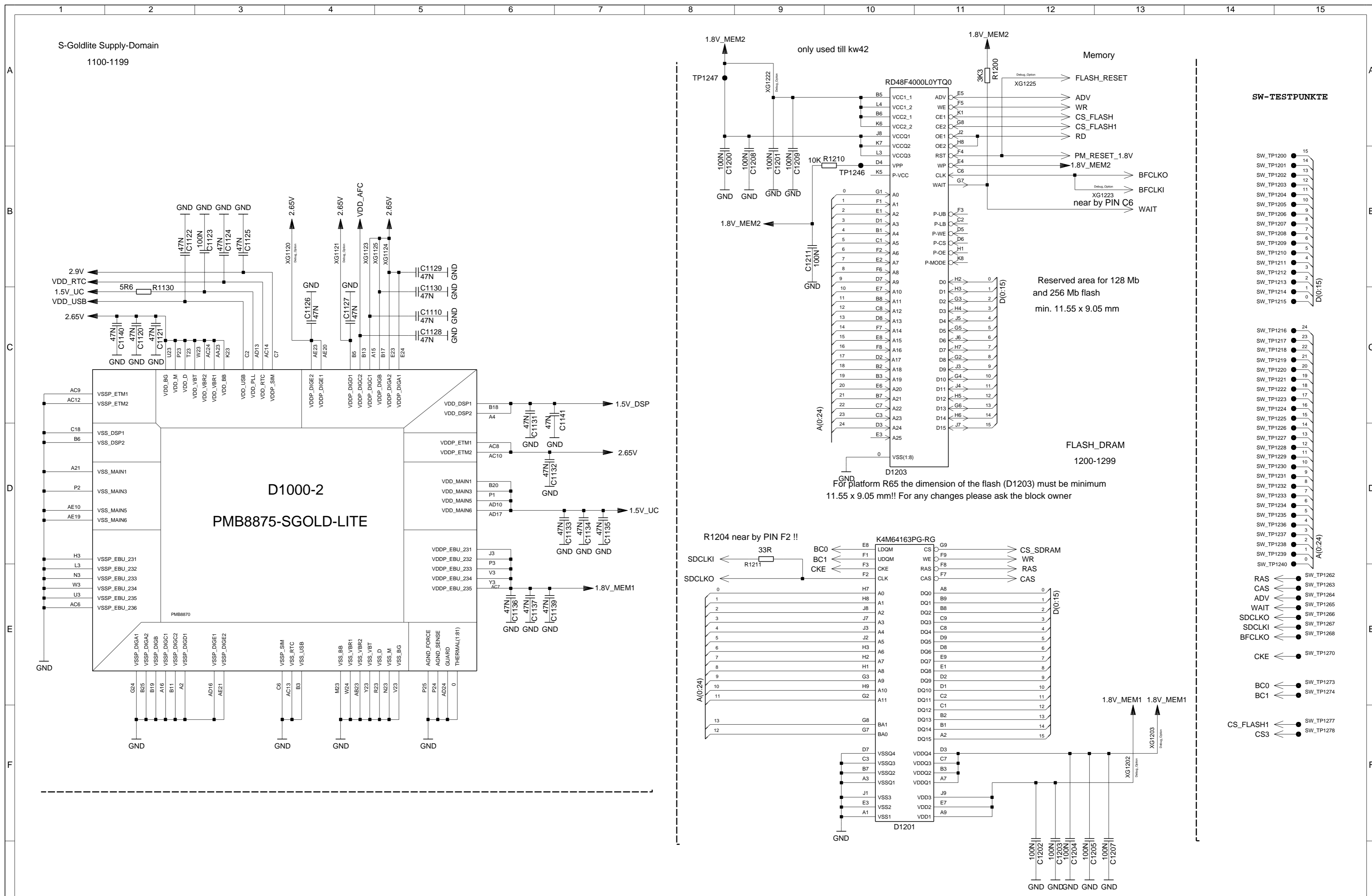
DATE	21.10.2003	C65 Hera IFX Assembled B2.1 Layout TOP HIERARCHY LEVEL SCHEMATIC	1:1			
USER	rba					
APPR'D						
MP UC RD LPD AAL		Siemens AG	94670			
VERS.	2			23469	26.01.2005	rba
CHANGE NUMBER	1			19714	01.10.2004	rba
		( Created by BOM number: A5B00900166593-23469 )				





DATE	21.10.2003	C65 Hera IFX Assembled B2.1 Layout TOP HIERARCHY LEVEL SCHEMATIC	1:1
USER	rba		
APPR'D			
MP UC RD LPD AAL			
2	23469	26.01.2005	rba
1	19714	01.10.2004	rba
VERS.	CHANGE NUMBER	DATE	NAME
Siemens AG		94670	sheet5
( Created by BOM number: A5B00900166593-23469 )			

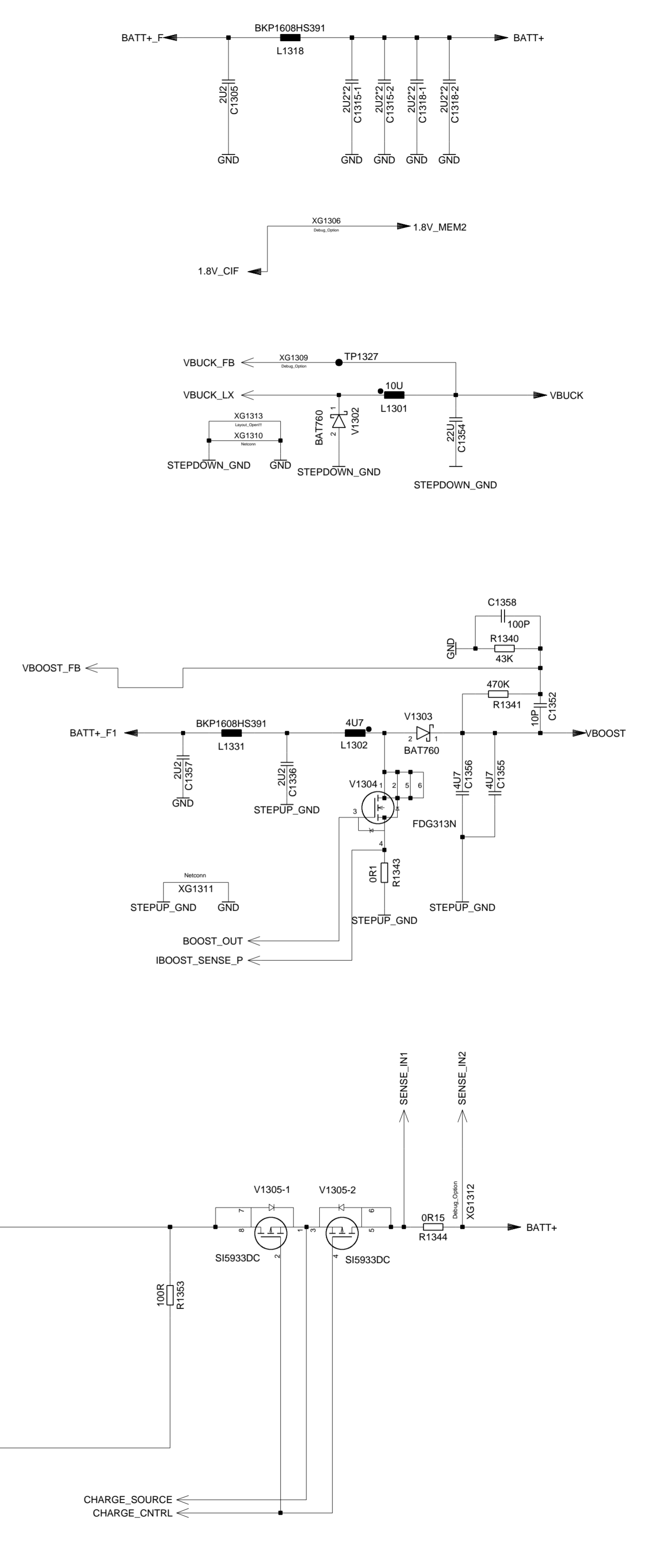
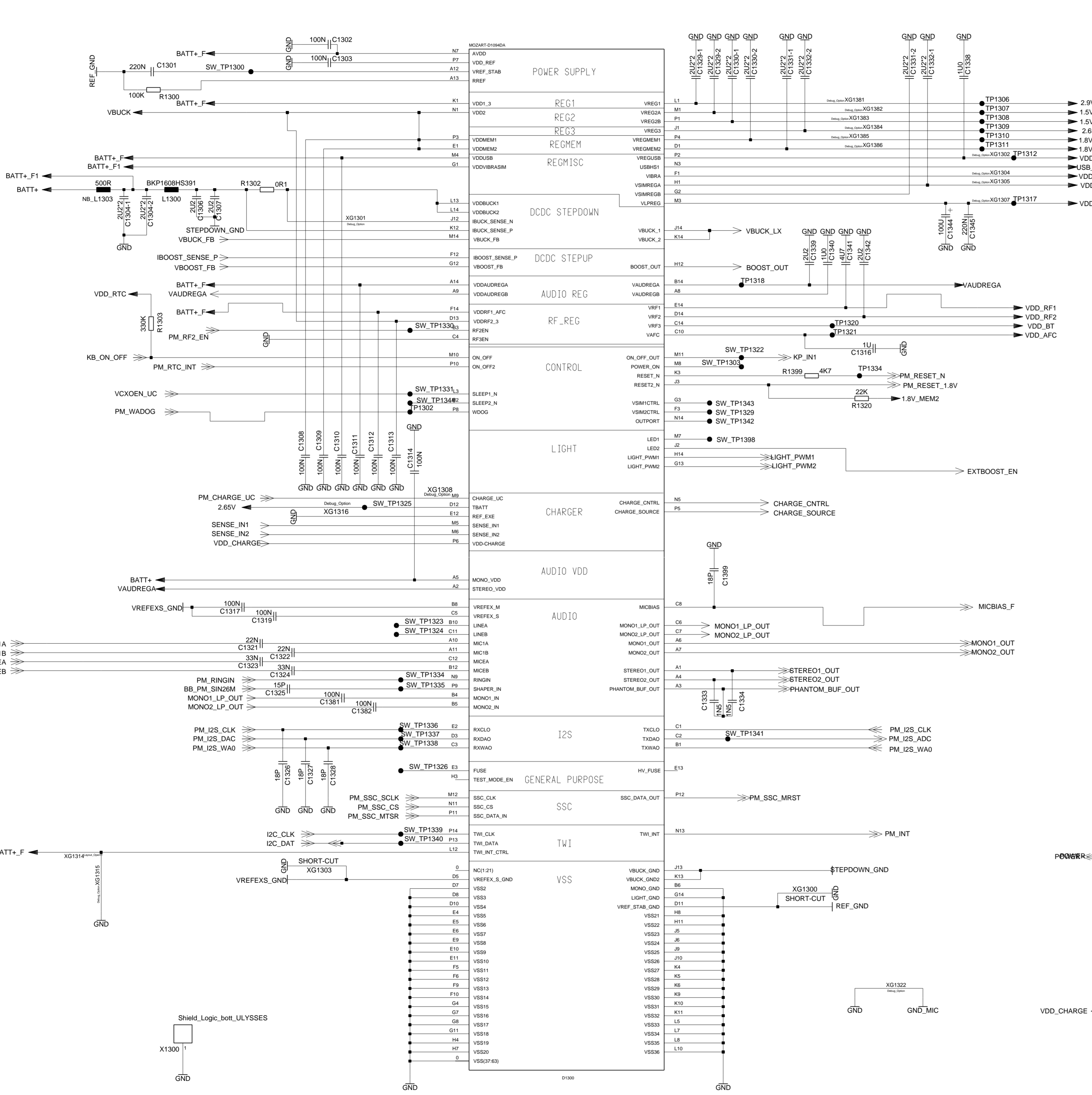




DATE	21.10.2003	C65 Hera IFX Assembled	
USER	rba	B2.1 Layout	
APPR D		TOP HIERARCHY LEVEL	
		SCHEMATIC	
VERS.	CHANGE NUMBER	DATE	NAME
2	23469	26.01.2005	rba
1	19714	01.10.2004	rba
		DATE	NAME
		21.10.2003	rba
		APPR D	
		MP UC RD LPD AAL	
		Siemens AG	94670
			sheet6

( Created by BOM number: A5B00900166593-23469 )

Mozart  
1300-1399

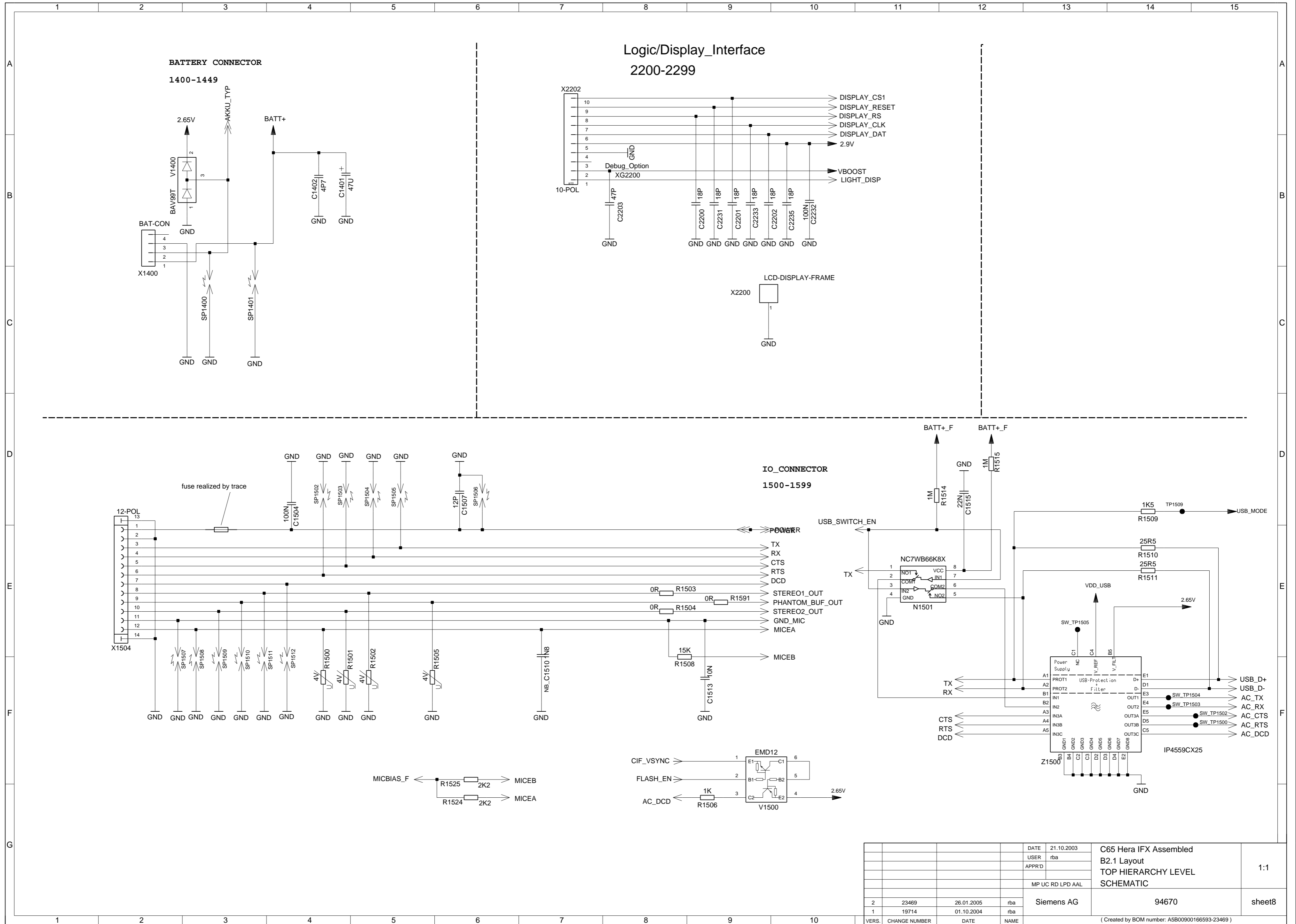


Sin nuestra expresa autorización, queda terminantemente prohibida la reproducción total o parcial de este documento, así como su uso indebido y/o su explotación o comunicación terceros. De los infractores se exigirá el correspondiente resarcimiento de daños y perjuicios. Se reserva todos los derechos para el caso de la concesión de patentes de invención o el registro de Modelos Industriales.

Copying of this document, and giving to others and the use or communication of the contents thereof, are forbidden without express authority. Offenders are liable for the payment of damages. All rights are reserved in the event of the grant of a Patent or the registration of a Utility Model or Design.

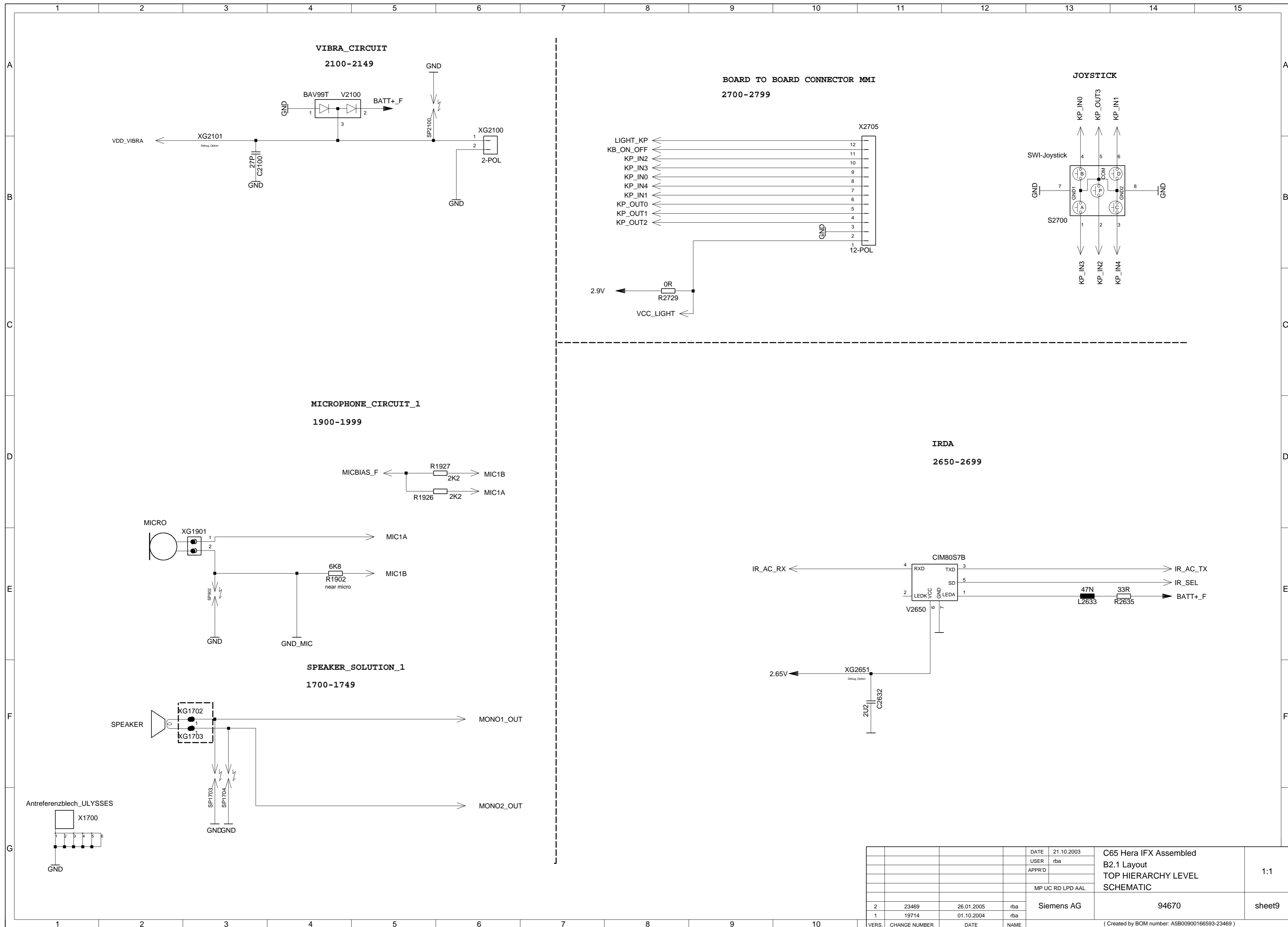
Wiedergabe sowie Weiterverbreitung dieses Urtextes, Verwertung und Mitteilung ihres Inhalts nicht gestattet, soweit nicht ausdrücklich zugestanden. Zuwiderhandlungen verpflichten zu Schadenersatz. Alle Rechte für den Fall der Patentierung oder DM-Eintragung vorbehalten.

DATE	21.10.2003	C65 Hera IFX Assembled	
USER	rba	B2.1 Layout	
APPROV		TOP HIERARCHY LEVEL	1:1
		SCHEMATIC	
		MP UC RD LPD AAL	
2	23469	26.01.2005	rba
1	19714	01.10.2004	rba
VERS.	CHANGE NUMBER	DATE	NAME
( Created by BCM number: A5B00900166593-23469 )			



DATE	21.10.2003	C65 Hera IFX Assembled B2.1 Layout TOP HIERARCHY LEVEL SCHEMATIC	1:1
USER	rba		
APPR'D			
MP UC RD LPD AAL			
2	23469	26.01.2005	rba
1	19714	01.10.2004	rba
VERS.	CHANGE NUMBER	DATE	NAME
			Siemens AG
			94670
			sheet8

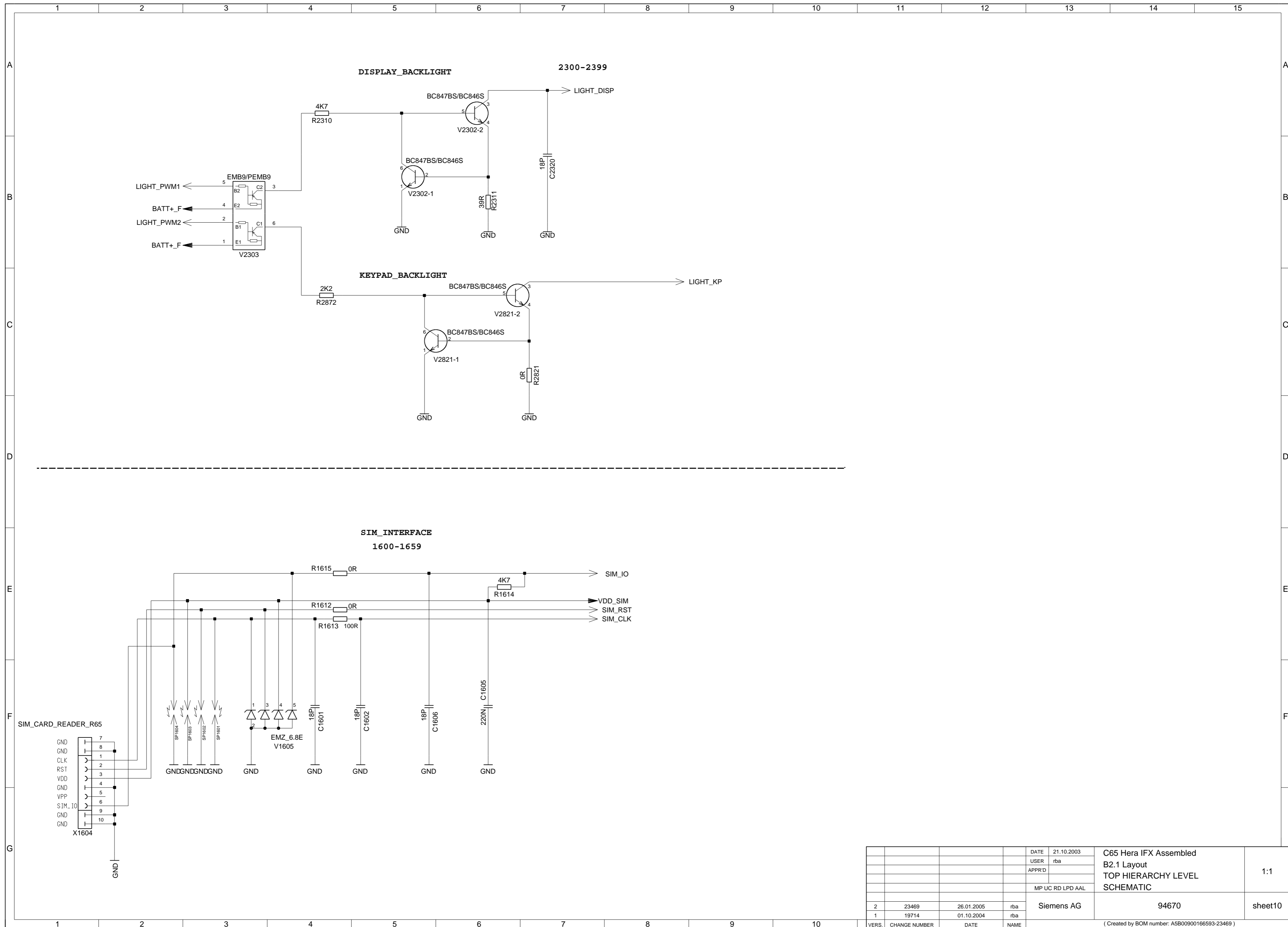
( Created by BOM number: A5B00900166593-23469 )



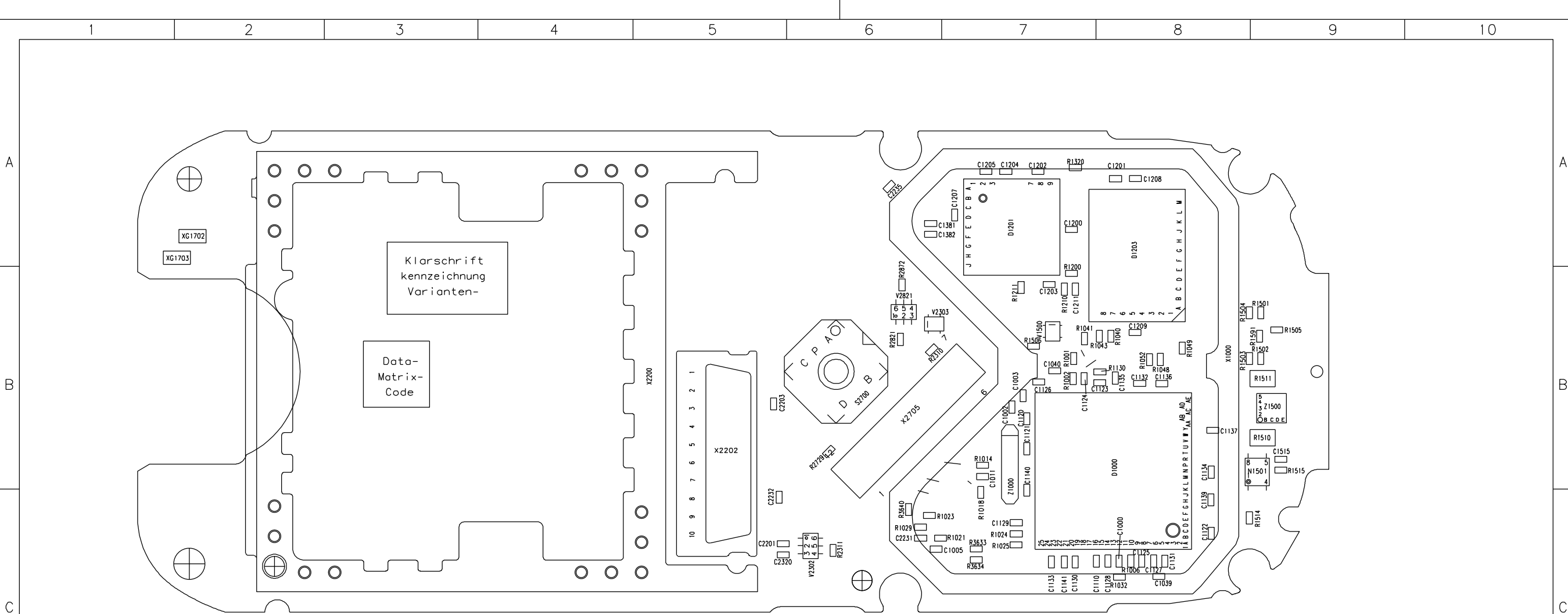
DATE	21.10.2003	C65 Hera IFX Assembled B2.1 Layout TOP HIERARCHY LEVEL SCHEMATIC	1:1		
USER	rba				
APPR'D					
MP UC RD LPD AAL		Siemens AG	94670		
2	23469			26.01.2005	rba
1	19714			01.10.2004	rba
VERS.	CHANGE NUMBER	DATE	NAME	( Created by BOM number: A5B00900166593-23469 )	

Proprietary data. Company confidential.  
all rights reserved

Als Betriebsgeheimnis anvertraut  
alle Rechte vorbehalten



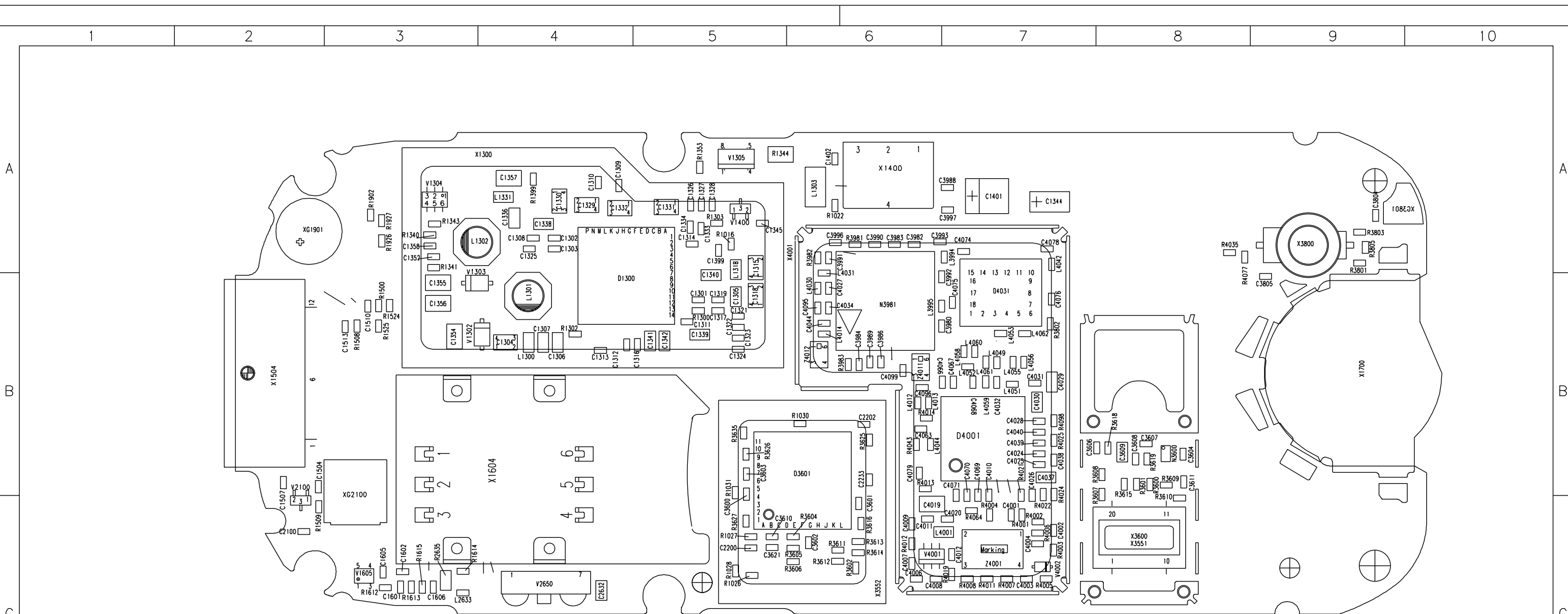
				DATE	21.10.2003	C65 Hera IFX Assembled B2.1 Layout TOP HIERARCHY LEVEL SCHEMATIC	1:1
				USER	rba		
				APPR'D			
						MP UC RD LPD AAL	
						Siemens AG	94670
							sheet10
VERS.	CHANGE NUMBER	DATE	NAME	( Created by BOM number: A5B00900166593-23469 )			



C1000	8C	C1382	6A	R1510	9B
C1002	7B	C1515	9B	R1511	9B
C1003	7B	C2201	6C	R1514	8C
C1005	6C	C2203	5B	R1515	9B
C1011	7B	C2231	6C	R1591	9B
C1039	8C	C2232	5C	R2310	6B
C1040	7B	C2235	6A	R2311	6C
C1110	7C	C2320	6C	R2729	6B
C1120	7B	D1000	8C	R2821	6B
C1121	7B	D1201	7A	R2872	6B
C1122	8C	D1203	8B	R3633	7C
C1123	8B	N1501	8C	R3634	7C
C1124	7B	R1001	7B	R3640	6C
C1125	8C	R1002	7B	S2700	6B
C1126	7B	R1006	8C	V1500	7B
C1127	8C	R1014	7B	V2302	6C
C1128	8C	R1018	7C	V2303	6B
C1129	7C	R1021	6C	V2821	6B
C1130	7C	R1023	6C	X1000	8C
C1131	8C	R1024	7C	X2200	2B
C1132	8B	R1025	7C	X2202	5B
C1133	7C	R1029	6C	X2705	6B
C1134	8B	R1032	8C	Z1000	7B
C1135	8B	R1040	8B	Z1500	9B
C1136	8B	R1041	7B		
C1137	8B	R1043	8B		
C1139	8C	R1048	8B		
C1140	7B	R1049	8B		
C1141	7C	R1052	8B		
C1200	7A	R1130	7B		
C1201	8A	R1200	7B		
C1202	7A	R1210	7B		
C1203	7B	R1211	7B		
C1204	7A	R1320	7A		
C1205	7A	R1501	9B		
C1207	7A	R1502	9B		
C1208	8A	R1503	8B		
C1209	8B	R1504	8B		
C1211	7B	R1505	9B		
C1381	6A	R1506	7B		

Achtung : Hoehenprofil C24\_...\_...-42 (gilt nur fuer Entwicklung)  
Liefervarianten siehe : V24851-Z2000-A1-\*35

				DATE	21.10.2003	C65 Hera IFX Assembled B2.1 Layout WIRING DIAGRAMM (SOLDER SIDE 1)	3:1
				NAME	rba		
				APPR'D			
				STD			
				MP UC RD LPD AAL			
2	23469	26.01.2005	rba	SIEMENS AG		94671	SHEET 1+
1	19714	01.10.2004	rba				
VERS.	CHANGE NUMBER	DATE	NAME	( Created by BOM number: A5B00900166593-23469 )			



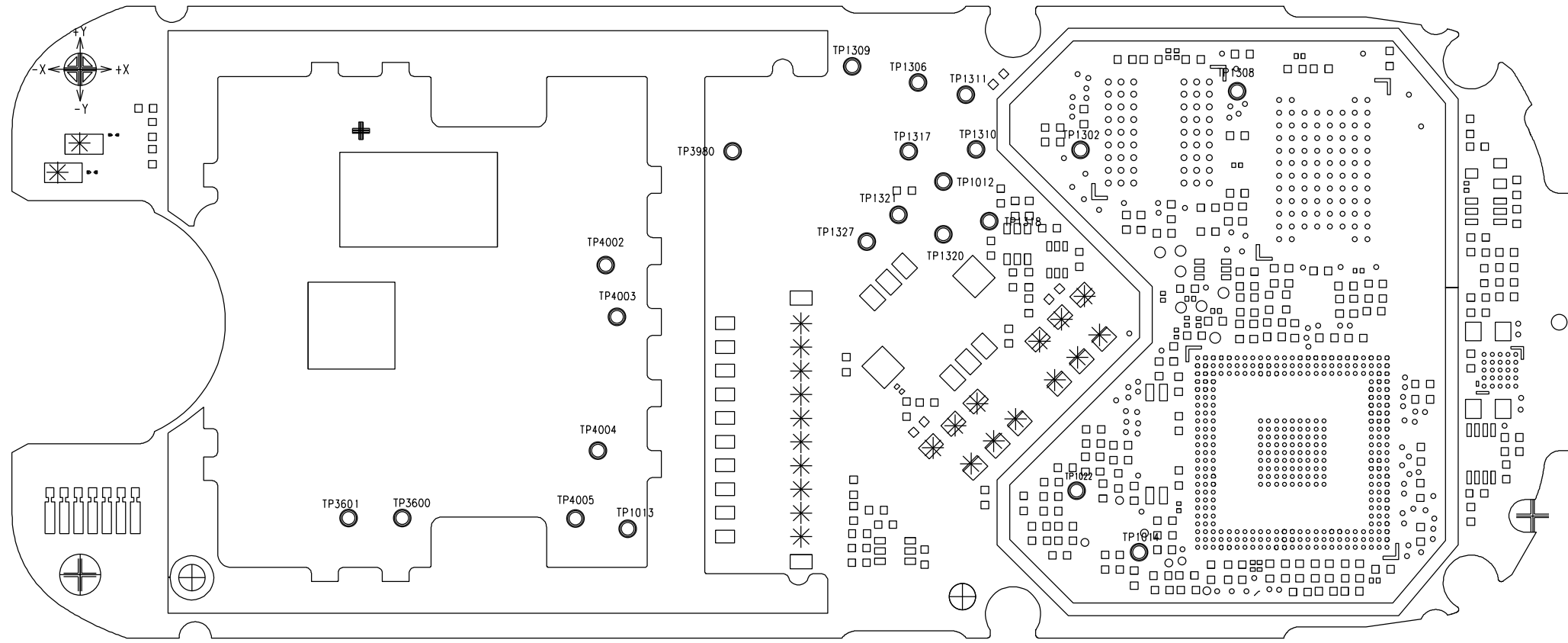
C1301	5B	C1355	3B	C3992	6B	C4079	6B	R1030	6B	R3626	5B	X1400	6A
C1302	4A	C1356	3B	C3993	6A	C4095	6B	R1031	5C	R3627	5C	X1504	2B
C1303	4A	C1357	4A	C3996	6A	C4096	6B	R1300	5B	R3635	5B	X1604	3B
C1304	4B	C1358	3A	C3997	7A	C4099	6B	R1302	4B	R3801	9A	X1700	9B
C1305	5B	C1399	5A	C4001	7C	D1300	5A	R1303	5A	R3802	7B	X3551	8B
C1306	4B	C1401	7A	C4002	7C	D3601	5C	R1340	3A	R3803	9A	X3552	5B
C1307	4B	C1402	6A	C4003	7C	D4001	7B	R1341	3A	R3805	9A	X3600	8C
C1308	4A	C1504	2B	C4004	7C	D4031	7B	R1343	3A	R3981	6A	X3800	9A
C1309	4A	C1507	2B	C4006	6C	L1300	4B	R1344	5A	R3982	6A	X4001	7C
C1310	4A	C1510	3B	C4007	6C	L1301	4B	R1353	5A	R3983	6B	Z4001	7C
C1311	5B	C1513	3B	C4008	6C	L1302	3A	R1399	4A	R4001	7C	Z4011	6B
C1312	4B	C1601	3C	C4009	6C	L1303	6A	R1500	3B	R4002	7C	Z4012	6B
C1313	4B	C1602	3C	C4010	7C	L1318	5B	R1508	3B	R4003	7C		
C1314	5A	C1605	3C	C4011	6C	L1331	4A	R1509	2C	R4004	7C		
C1315	5B	C1606	3C	C4012	7C	L2633	3C	R1524	3B	R4005	7C		
C1316	5B	C2100	2C	C4019	7C	L3994	7A	R1525	3B	R4006	7C		
C1317	5B	C2200	5C	C4020	7C	L3995	6B	R1612	3C	R4007	7C		
C1318	5B	C2202	6B	C4024	7B	L4001	6C	R1613	3C	R4008	7C		
C1319	5B	C2233	6B	C4025	7B	L4012	6B	R1614	3C	R4011	7C		
C1321	5B	C2632	4C	C4026	7C	L4013	6B	R1615	3C	R4012	6C		
C1322	5B	C3600	5B	C4027	6B	L4014	6B	R1902	3A	R4013	6B		
C1323	5B	C3601	6C	C4028	7B	L4030	6B	R1926	3A	R4014	6B		
C1324	5B	C3602	6C	C4029	7B	L4031	6A	R1927	3A	R4019	7C		
C1325	4A	C3603	5B	C4030	7B	L4042	7A	R2635	3C	R4021	7B		
C1326	5A	C3604	8B	C4031	7B	L4044	6B	R3600	8B	R4022	7C		
C1327	5A	C3606	8B	C4032	7B	L4049	7B	R3601	8B	R4024	7B		
C1328	5A	C3607	8B	C4034	6B	L4051	7B	R3602	6C	R4025	7B		
C1329	4A	C3608	8B	C4037	7B	L4052	7B	R3604	6C	R4035	8A		
C1330	4A	C3609	8B	C4038	7B	L4053	7B	R3605	6C	R4043	6B		
C1331	5A	C3610	5C	C4039	7B	L4055	7B	R3606	6C	R4064	7C		
C1332	4A	C3611	8B	C4040	7B	L4056	7B	R3607	8B	R4077	8A		
C1333	5A	C3621	5C	C4044	6B	L4058	7B	R3608	8B	R4098	7B		
C1334	5A	C3804	9A	C4063	6B	L4059	7B	R3609	8B	V1302	4B		
C1336	4A	C3805	9B	C4066	7B	L4060	7B	R3610	8C	V1303	3B		
C1338	4A	C3980	6B	C4067	7B	L4061	7B	R3611	6C	V1304	3A		
C1339	5B	C3982	6A	C4068	7B	L4062	7B	R3612	6C	V1305	5A		
C1340	5B	C3983	6A	C4069	7C	N3600	8B	R3613	6C	V1400	5A		
C1341	5B	C3984	6B	C4070	7C	N3981	6B	R3614	6C	V1605	3C		
C1342	5B	C3986	6B	C4071	7C	R1016	5A	R3615	8B	V2100	2B		
C1344	7A	C3988	6A	C4074	7A	R1022	6A	R3616	6C	V2650	4C		
C1345	5A	C3989	6B	C4075	7B	R1026	5C	R3618	8B	V4001	6C		
C1352	3A	C3990	6A	C4076	7B	R1027	5C	R3619	8B	V4002	7C		
C1354	3B	C3991	6A	C4078	7A	R1028	5C	R3625	6B	X1300	5B		

Achtung : Hoehenprofil C24\_...\_...\_42 (gilt nur fuer Entwicklung)  
Liefervarianten siehe : V24851-Z2000-A1-\*35

DATE	21.10.2003	C65 Hera IFX Assembled		3:1
NAME	rba	B2.1 Layout		
APPR'D		WIRING DIAGRAMM (SOLDER SIDE 2)		
STD				
MP UC RD LPD AAL				
2	23469	26.01.2005	rba	SHEET
1	19714	01.10.2004	rba	2+
VERS.	CHANGE NUMBER	DATE	NAME	( Created by BOM number: A5B00900166593-23469 )

PROPRIETARY DATA, COMPANY CONFIDENTIAL  
ALL RIGHTS RESERVED

ALS BETRIEBSGEHEIMNIS ANVERTRAUT  
ALLE RECHTE VORBEHALTEN



TP1012	6A
TP1013	4C
TP1014	7C
TP1022	7C
TP1302	7A
TP1306	6A
TP1308	7A
TP1309	5A
TP1310	6A
TP1311	6A
TP1317	6A
TP1318	6B
TP1320	6B
TP1321	6B
TP1327	6B
TP3600	3C
TP3601	3C
TP3980	5A
TP4002	4B
TP4003	4B
TP4004	4B
TP4005	4C

				DATE	21.10.2003	C65 Hera IFX complete B2.1 Layout TESTPOINT DIAGRAMM (SIDE 1)	3:1
				NAME	rba		
				APPR'D			
				STD			
				MP UC RD LPD AAL			
				SIEMENS AG		94661	SHEET 1+
1	19714	01.10.2004	rba				
VERS.	CHANGE NUMBER	DATE	NAME	( Created by BOM number: A5B00900166591-19714 )			



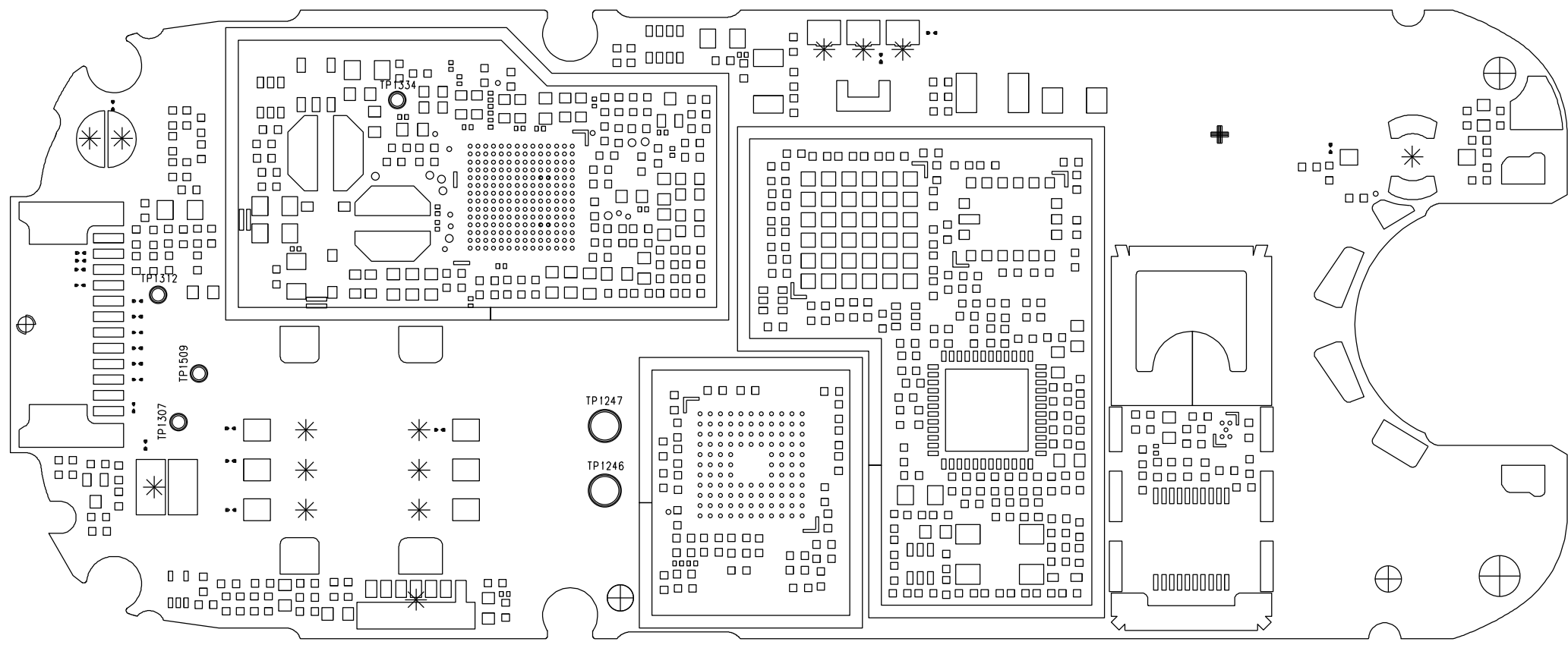
PROPRIETARY DATA, COMPANY CONFIDENTIAL  
ALL RIGHTS RESERVED

ALS BETRIEBSGEHEIMNIS ANVERTRAUT  
ALLE RECHTE VORBEHALTEN

1 2 3 4 5 6 7 8 9 10

A  
B  
C  
D  
E

A  
B  
C  
D  
E



TP1246	4C
TP1247	4B
TP1307	2B
TP1312	2B
TP1334	3A
TP1509	2B

1 2 3 4 5

				DATE	21.10.2003	C65 Hera IFX complete B2.1 Layout TESTPOINT DIAGRAMM (SIDE 2)	3:1
				NAME	rba		
				APPR'D			
				STD			
						MP UC RD LPD AAL	
						SIEMENS AG	
						94661	SHEET 2-
1	19714	01.10.2004	rba	( Created by BOM number: A5B00900166591-19714 )			
VERS.	CHANGE NUMBER	DATE	NAME				